

STATE OF ILLINOIS
DEPARTMENT OF TRANSPORTATION

F.A.I. RTE.	SECTION	COUNTY	TOTAL SHEETS	SHEET NO.
55		LIVINGSTON	6	1
		ILLINOIS	CONTRACT NO. 66T32	

*2026-1 POLLINATOR PRES & REST

INDEX OF SHEETS

- 1 COVER SHEET
- 2 - 3 GENERAL NOTES
- 4 SUMMARY OF QUANTITIES
- 5 - 6 SCHEDULES

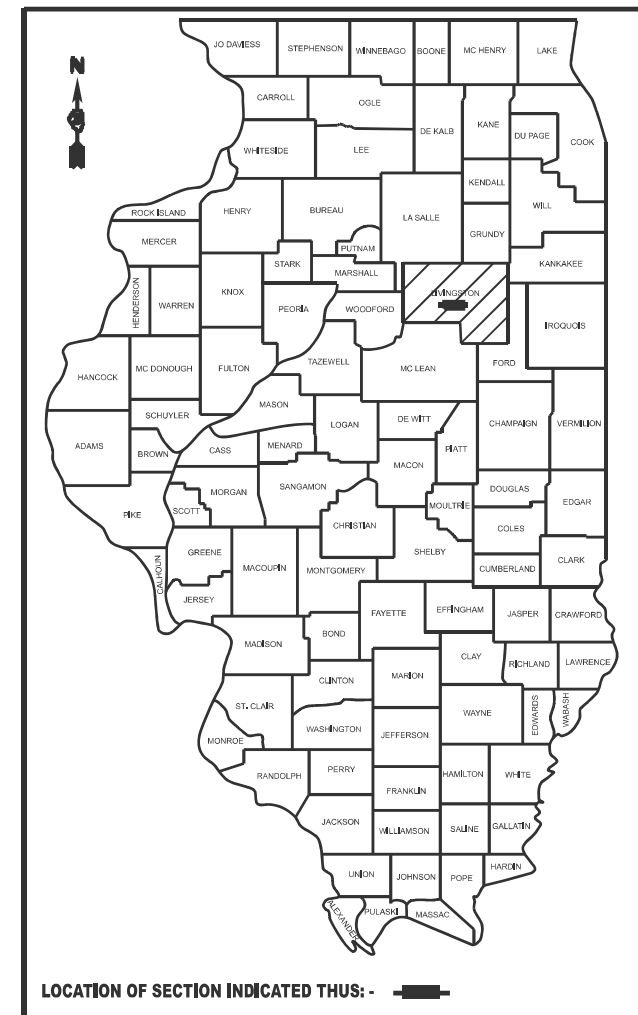
LIST OF ILLINOIS DOT HIGHWAY STANDARDS

- 000001-09 STANDARD SYMBOLS, ABBREVIATIONS AND PATTERNS
- 001006 DECIMAL OF AN INCH AND OF A FOOT
- 701001-02 OFF-ROAD OPERATIONS 2L, 2W, MORE THAN 15' AWAY
- 701006-05 OFF-ROAD OPERATIONS 2L, 2W, 15' TO 24" FROM PAVEMENT EDGE
- 701011-04 OFF-ROAD MOVING OPERATIONS 2L, 2W, DAY ONLY
- 701101-05 OFF-ROAD OPERATIONS, MULTILANE, 15' TO 24" FROM PAVEMENT EDGE
- 701106-02 OFF-ROAD OPERATIONS, MULTILANE, MORE THAN 15' AWAY
- 701901-11 TRAFFIC CONTROL DEVICES

**PROPOSED
HIGHWAY PLANS**

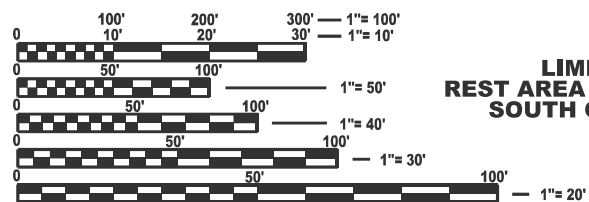
**FAI ROUTE 55 (I-55)
SECTION 2026-1 POLLINATOR PRES & REST
PROJECT:
POLLINATOR HABITAT RESTORATION
& PRESERVATION
LIVINGSTON COUNTY**

C-93-060-26



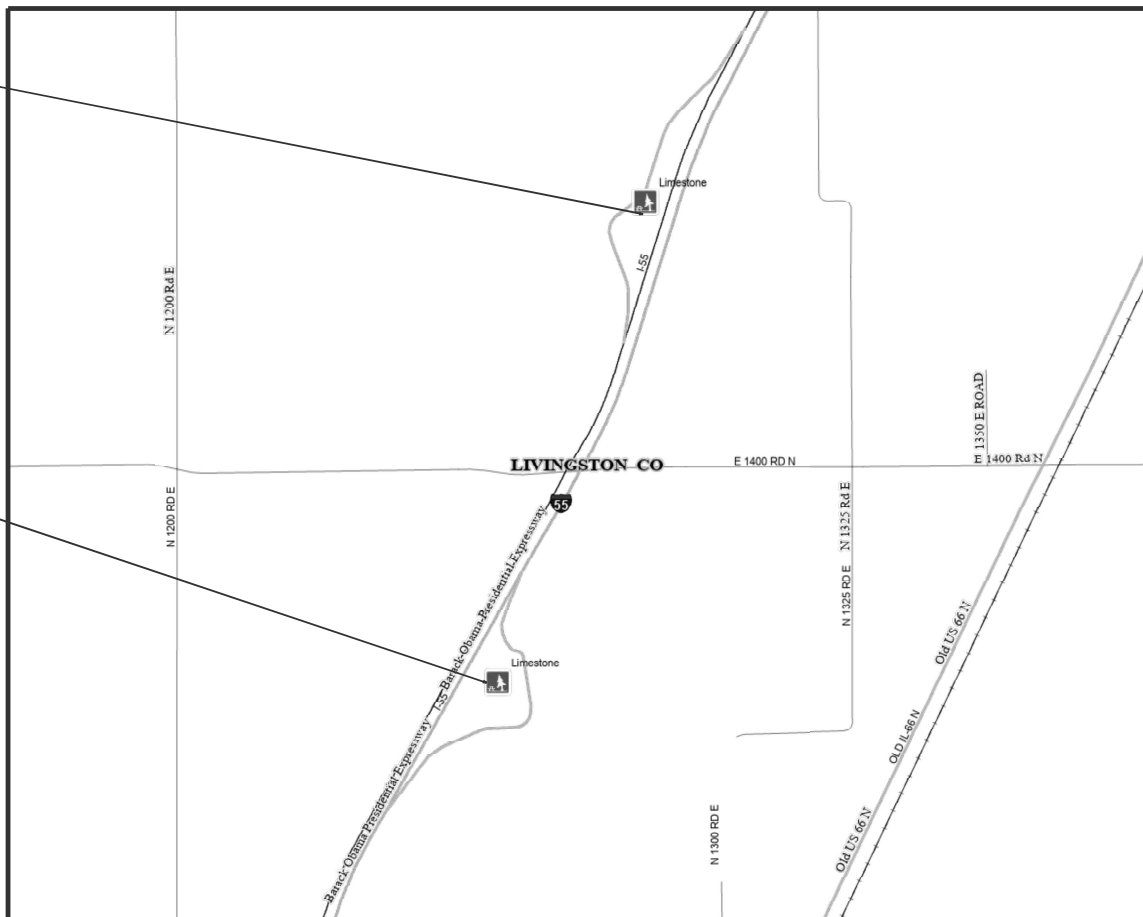
FUNCTIONAL CLASSIFICATION

INTERSTATE
2025 ADT = 23500
P.V. = 72.0 %
S.U. = 3.3 %
M.U. = 24.7 %



FULL SIZE PLANS HAVE BEEN PREPARED USING STANDARD ENGINEERING SCALES. REDUCED SIZED PLANS WILL NOT CONFORM TO STANDARD SCALES. IN MAKING MEASUREMENTS ON REDUCED PLANS, THE ABOVE SCALES MAY BE USED.

J.U.L.I.E.
JOINT UTILITY LOCATION INFORMATION FOR EXCAVATION
1-800-892-0123
OR 811



LOCATION MAP
(NOT TO SCALE)

GROSS & NET LENGTH = POINT LOCATION

PROJECT ENGINEER: JOSEPH E. KANNEL, P.E.
SQUAD LEADER: MOHAMED YOUSIF
DISTRICT 3 NO. (815)-434-6131
CONTRACT NO. 66T32

STATE OF ILLINOIS
DEPARTMENT OF TRANSPORTATION

SUBMITTED February 4 2026
Trisha Thompson REGIONAL ENGINEER

March 20 2026
Scott A. [Signature] ENGINEER OF DESIGN AND ENVIRONMENT

March 20 2026
[Signature] DIRECTOR OF HIGHWAYS PROJECT IMPLEMENTATION

**PRINTED BY THE AUTHORITY
OF THE STATE OF ILLINOIS**

GENERAL NOTES

- 1 ANY REFERENCE TO A STANDARD IN THESE PLANS SHALL BE INTERPRETED TO MEAN THE EDITION AS INDICATED BY THE SUBNUMBER SHOWN IN THE LIST OF STANDARDS OR THE COPY INCLUDED IN THESE PLANS.
- 2 PERFORM ALL WORK WITHIN THE RIGHT OF WAY.
- 3 SITE CLEAN-UP SHALL BE PERFORMED ON A DAILY BASIS. SIDEWALKS, PARKING LOTS, ROADWAYS, ETC. SHALL BE KEPT CLEAN AT ALL TIMES.
- 4 MAINTAIN POSITIVE DRAINAGE ON THE SITE THROUGHOUT THE PROJECT DURATION; DO NOT ALLOW THATCH OR OTHER DEBRIS TO ACCUMULATE IN DRAINAGE DITCHES.
- 5 ALL EXAVATED MATERIALS, WHICH INCLUDES DIGGING OR GRADING OF ANY SOIL OR FILL MATERIAL, WITH THE EXCEPTION OF AGGREGATE FILLS, MUST BE INCORPORATED WITHIN THE IDOT RIGHT OF WAY. ALL OTHER EXCESS AND WASTE MATERIALS SHALL BE DISPOSED OF OFF-SITE.
- 6 SUPPLY AND RE-SE T/RE-ESTABLISH TO EXISTING CONDITION ANY PROPERTY PINS THAT ARE DAMAGED, COVERED, AND/OR REMOVED THROUGHOUT THE PROJECT DURATION.
- 7 VERIFY THE LOCATION AND PROTECT UTILITIES AND STRUCTURES PRIOR TO BEGINNING WORK. CONTRACTOR SHALL CONTACT JULIE AT LEAST 48 HOURS PRIOR TO DIGGING. THE CONTRACTOR'S ATTENTION IS DIRECTED TO THE PRESENCE OF DEPARTMENT-OWNED UNDERGROUND ELECTRICAL CABLE WITHIN THE LIMITS OF THE PROPOSED IMPROVEMENT. THE CONTRACTOR SHALL REQUEST THE ILLINOIS DEPARTMENT OF TRANSPORTAION IN OTTAWA (815-434-8417) TO LOCATE THE UNDERGROUND FACILITIES, PROVIDING A MINIMUM OF 72 HOURS NOTICE. THE DEPARTMENT IS NOT A MEMBER OF THE JOINT UTILITY LOCATING INFORMATION FOR EXCAVATORS (JULIE) SYSTEM. CONTRACTOR SHALL CONTACT DISTRICT 3 TRAFFIC SIGNAL SECTION AT (815-434-8506) FOR HIGHWAY LIGHTING LOCATES.
- 8 ALL DAMAGE TO DEPARTMENT OWNED UNDERGROUND FACILITIES CAUSED BY THE CONTRACTOR SHALL BE REPAIRED TO THE SATISFACTION OF THE ENGINEER AND AT NO EXPENSE TO THE DEPARTMENT. THIS SHALL INCLUDE ALL TEMPORARY REPAIRS REQUIRED TO KEEP THE FACILITY OPERATIONAL WHILE MATERIAL IS BEING OBTAINED TO MAKE PERMANENT REPAIRS. SPLICING OF ELECTRIC CABLE WILL NOT BE ALLOWED. ELECTRIC CABLE SHALL BE REPLACED FROM POLE TO POLE OR CONTROLLER.
- 9 THE FOLLOWING RATES OF APPLICATION HAVE BEEN USED IN CALCULATING PLAN QUANTITIES:

NB NATIVE GRASS SEED MIX FOR DRY-MESIC PLANTING AREAS				
1.6 ACRES				
PRODUCT	APPLICATION RATE		PAY ITEM	APPLICATION TIMING
GYPSSUM	40.00	LBS/1,000 SF	SOIL AMENDMENTS	FALL 2026
MAP (11-52-0)	6.00	LBS/1,000 SF	SOIL AMENDMENTS	FALL 2026
SOP (0-0-50)	4.00	LBS/1,000 SF	SOIL AMENDMENTS	FALL 2026
UREA (46-0-0)	3.00	LBS/1,000 SF	SOIL AMENDMENTS	FALL 2026

NB PRAIRIE SEED MIX FOR MESIC PLANTING AREAS - FLATS WEST OF PARKING LOT				
2.4 ACRES				
PRODUCT	APPLICATION RATE		PAY ITEM	APPLICATION TIMING
GYPSSUM	40.00	LBS/1,000 SF	SOIL AMENDMENTS	FALL 2026
MAP (11-52-0)	6.00	LBS/1,000 SF	SOIL AMENDMENTS	FALL 2026
SOP (0-0-50)	4.00	LBS/1,000 SF	SOIL AMENDMENTS	FALL 2026
UREA (46-0-0)	3.00	LBS/1,000 SF	SOIL AMENDMENTS	FALL 2026

NB PRAIRIE SEED MIX FOR MESIC PLANTING AREAS - FLATS EAST OF PARKING LOT				
5.7 ACRES				
PRODUCT	APPLICATION RATE		PAY ITEM	APPLICATION TIMING
GYPSSUM	40.00	LBS/1,000 SF	SOIL AMENDMENTS	FALL 2026
MAP (11-52-0)	2.00	LBS/1,000 SF	SOIL AMENDMENTS	FALL 2026
SOP (0-0-50)	2.00	LBS/1,000 SF	SOIL AMENDMENTS	FALL 2026
UREA (46-0-0)	3.00	LBS/1,000 SF	SOIL AMENDMENTS	FALL 2026

NB PRAIRIE SEED MIX FOR MESIC PLANTING AREAS - SLOPES & SWALES				
4.2 ACRES				
PRODUCT	APPLICATION RATE		PAY ITEM	APPLICATION TIMING
GYPSSUM	20.00	LBS/1,000 SF	SOIL AMENDMENTS	FALL 2026
MAP (11-52-0)	3.00	LBS/1,000 SF	SOIL AMENDMENTS	FALL 2026
SOP (0-0-50)	6.00	LBS/1,000 SF	SOIL AMENDMENTS	FALL 2026
UREA (46-0-0)	3.00	LBS/1,000 SF	SOIL AMENDMENTS	FALL 2026

NB SEDGE MEADOW SEED MIX FOR MESIC-WET PLANTING AREAS				
2.6 ACRES				
PRODUCT	APPLICATION RATE		PAY ITEM	APPLICATION TIMING
GYPSSUM	40.00	LBS/1,000 SF	SOIL AMENDMENTS	FALL 2026
SOP (0-0-50)	4.00	LBS/1,000 SF	SOIL AMENDMENTS	FALL 2026
Urea (46-0-0)	3.00	LBS/1,000 SF	SOIL AMENDMENTS	FALL 2026

STATE OF ILLINOIS
DEPARTMENT OF TRANSPORTATION
DISTRICT THREE
AS BUILT INFORMATION

SUPERVISING CONSTRUCTION FIELD ENGINEER

RESIDENT ENGINEER / TECHNICIAN

START & END DATES
OF CONSTRUCTION: _____

INSPECTORS: _____

F.A.I. RTE.	SECTION	COUNTY	TOTAL SHEETS	SHEET NO.
55	*	LIVINGSTON	6	2
CONTRACT NO. 66T32				
ILLINOIS FED. AID PROJECT				

STATE OF ILLINOIS
DEPARTMENT OF TRANSPORTATION

GENERAL NOTES

SCALE: SHEET OF SHEETS STA. TO STA.

*2026-1 POLLINATOR PRES & REST

MODEL - Default
FILE NAME: c:\p\work\low\low\lapan\sharanan@illinois.gov\1183082\0368132-SHT-COVER.dgn

USER NAME = Arpan,Sharan	DESIGNED -	REVISED -
	DRAWN -	REVISED -
	CHECKED -	REVISED -
PLOT DATE = 2/3/2026	DATE -	REVISED -

SB NATIVE GRASS SEED MIX FOR DRY-MESIC PLANTING AREAS				
2.3 ACRES				
PRODUCT	APPLICATION RATE		PAY ITEM	APPLICATION TIMING
GYPSUM	20.00	LBS/1,000 SF	SOIL AMENDMENTS	FALL 2026
MAP (11-52-0)	6.00	LBS/1,000 SF	SOIL AMENDMENTS	FALL 2026
SOP (0-0-50)	6.00	LBS/1,000 SF	SOIL AMENDMENTS	FALL 2026
UREA (46-0-0)	2.00	LBS/1,000 SF	SOIL AMENDMENTS	FALL 2026

SB SEDGE MEADOW SEED MIX FOR MESIC-WET SOIL PLANTING AREAS - WEST OF PARKING LOT				
12.1 ACRES				
PRODUCT	APPLICATION RATE		PAY ITEM	APPLICATION TIMING
GYPSUM	40.00	LBS/1,000 SF	SOIL AMENDMENTS	FALL 2026
MAP (11-52-0)	6.00	LBS/1,000 SF	SOIL AMENDMENTS	FALL 2026
UREA (46-0-0)	3.00	LBS/1,000 SF	SOIL AMENDMENTS	FALL 2026

SB PRAIRIE SEED MIX FOR MESIC PLANTING AREAS				
10.1 ACRES				
PRODUCT	APPLICATION RATE		PAY ITEM	APPLICATION TIMING
GYPSUM	20.00	LBS/1,000 SF	SOIL AMENDMENTS	FALL 2026
MAP (11-52-0)	6.00	LBS/1,000 SF	SOIL AMENDMENTS	FALL 2026
SOP (0-0-50)	6.00	LBS/1,000 SF	SOIL AMENDMENTS	FALL 2026
UREA (46-0-0)	2.00	LBS/1,000 SF	SOIL AMENDMENTS	FALL 2026

SB SUPPLEMENTAL SEDGE MEADOW SEED MIX FOR MESIC-WET SOIL PLANTING AREAS				
1.1 ACRES				
PRODUCT	APPLICATION RATE		PAY ITEM	APPLICATION TIMING
GYPSUM	20.00	LBS/1,000 SF	SOIL AMENDMENTS	FALL 2026
MAP (11-52-0)	3.00	LBS/1,000 SF	SOIL AMENDMENTS	FALL 2026
SOP (0-0-50)	6.00	LBS/1,000 SF	SOIL AMENDMENTS	FALL 2026
UREA (46-0-0)	3.00	LBS/1,000 SF	SOIL AMENDMENTS	FALL 2026

SB SEDGE MEADOW SEED MIX FOR MESIC-WET SOIL PLANTING AREAS - EAST OF PARKING LOT				
2.6 ACRES				
PRODUCT	APPLICATION RATE		PAY ITEM	APPLICATION TIMING
GYPSUM	20.00	LBS/1,000 SF	SOIL AMENDMENTS	FALL 2026
MAP (11-52-0)	3.00	LBS/1,000 SF	SOIL AMENDMENTS	FALL 2026
SOP (0-0-50)	6.00	LBS/1,000 SF	SOIL AMENDMENTS	FALL 2026
UREA (46-0-0)	3.00	LBS/1,000 SF	SOIL AMENDMENTS	FALL 2026

SB SUPPLEMENTAL FLOODPLAIN SEED MIX FOR MESIC-WET SOIL PLANTING AREAS				
3.8 ACRES				
PRODUCT	APPLICATION RATE		PAY ITEM	APPLICATION TIMING
GYPSUM	20.00	LBS/1,000 SF	SOIL AMENDMENTS	FALL 2026
MAP (11-52-0)	3.00	LBS/1,000 SF	SOIL AMENDMENTS	FALL 2026
SOP (0-0-50)	6.00	LBS/1,000 SF	SOIL AMENDMENTS	FALL 2026
UREA (46-0-0)	3.00	LBS/1,000 SF	SOIL AMENDMENTS	FALL 2026

MODEL: Default
 FILE NAME: c:\pwworking\arpan.sharan@illinois.gov\d118302\ID365132-SHT-COVER.dgn

USER NAME = Arpan,Sharan	DESIGNED -	REVISED -
	DRAWN -	REVISED -
	CHECKED -	REVISED -
PLOT DATE = 2/3/2026	DATE -	REVISED -

STATE OF ILLINOIS
DEPARTMENT OF TRANSPORTATION

GENERAL NOTES

SCALE: SHEET OF SHEETS STA. TO STA.

F.A.I. RTE.	SECTION	COUNTY	TOTAL SHEETS	SHEET NO.
55	*	LIVINGSTON	6	3
CONTRACT NO. 66T32				
ILLINOIS FED. AID PROJECT				

*2026-1 POLLINATOR PRES & REST

CODE NO.	ITEM	UNIT	TOTAL QUANTITY	CONSTR. CODE
				STP-RUR-STATE STATE 100% ROADWAY 0031 RURAL
25000750	MOWING	ACRE	193	193
67100100	MOBILIZATION	L SUM	1	1
K0026852	PRAIRIE WEED CONTROL	ACRE	280	280
K1006740	WILDFLOWER INTERSEEDING (SPECIAL)	ACRE	5	5
K1006756	WILDFLOWER SEEDING (SPECIAL)	ACRE	44	44
X2000003	SOIL AMENDMENTS	ACRE	44	44
X2511630	EROSION CONTROL BLANKET (SPECIAL)	SQ YD	15000	15000

MODEL: Default
FILE NAME: c:\pwwork\kwidolapani.sharan@illinois.gov\d1183082\ID366732-SHT-COVER.dgn

USER NAME = Arpan,Sharan	DESIGNED -	REVISED -
	DRAWN -	REVISED -
	CHECKED -	REVISED -
PLOT DATE = 1/22/2026	DATE -	REVISED -

**STATE OF ILLINOIS
DEPARTMENT OF TRANSPORTATION**

SUMMARY OF QUANTITIES

SCALE: SHEET OF SHEETS STA. TO STA.

F.A.I RTE.	SECTION	COUNTY	TOTAL SHEETS	SHEET NO.
55	*	LIVINGSTON	6	4
CONTRACT NO. 66T32				
ILLINOIS FED. AID PROJECT				

*2026-1 POLLINATOR PRES & REST

SEEDING OF NATIVE GRASS SEED MIX FOR DRY-MESIC SOILS			
PRODUCT	APPLICATION RATE		PAY ITEM
SPECIFIED PLS SEED MIX	174.00	OUNCES/ACRE	WILDFLOWER SEEDING (SPECIAL)
REGREEN COVER CROP	20.00	LBS/ACRE	WILDFLOWER SEEDING (SPECIAL)
MYCHORIZZAL INOCULANT	40.00	LBS/ACRE	WILDFLOWER SEEDING (SPECIAL)
RHIZOBIAL INOCULANT	TBD	OUNCES/ACRE	WILDFLOWER SEEDING (SPECIAL)

SEEDING OF SUPPLEMENTAL FLOODPLAIN SEDGE MEADOW SEED MIX FOR MESIC-WET SOILS			
PRODUCT	APPLICATION RATE		PAY ITEM
SPECIFIED PLS SEED MIX	31.63	OUNCES/ACRE	WILDFLOWER INTERSEEDING (SPECIAL)
REGREEN COVER CROP	20.00	LBS/ACRE	WILDFLOWER INTERSEEDING (SPECIAL)
MYCHORIZZAL INOCULANT	40.00	LBS/ACRE	WILDFLOWER INTERSEEDING (SPECIAL)
RHIZOBIAL INOCULANT	TBD	OUNCES/ACRE	WILDFLOWER INTERSEEDING (SPECIAL)

SEEDING OF PRAIRIE S SEED MIX FOR MESIC SOILS			
PRODUCT	APPLICATION RATE		PAY ITEM
SPECIFIED PLS SEED MIX	190.25	OUNCES/ACRE	WILDFLOWER SEEDING (SPECIAL)
REGREEN COVER CROP	20.00	LBS/ACRE	WILDFLOWER SEEDING (SPECIAL)
MYCHORIZZAL INOCULANT	40.00	LBS/ACRE	WILDFLOWER SEEDING (SPECIAL)
RHIZOBIAL INOCULANT	TBD	OUNCES/ACRE	WILDFLOWER SEEDING (SPECIAL)

WILDFLOWER SEEDING (SPECIAL)			
HERBICIDE APPLICATION #1 (SEVEN WEEKS PRIOR TO SEED INSTALLATION)			
BROADLEAF SELECTIVE HERBICIDE MIXTURE - SPOT SPRAY			
PRODUCT	APPLICATION RATE		PAY ITEM
MILESTONE	0.32	OUNCES/GALLONS OF SOLUTION	WILDFLOWER SEEDING (SPECIAL)
TRANSLINE	0.64	OUNCES/GALLONS OF SOLUTION	WILDFLOWER SEEDING (SPECIAL)
NONIONIC SURFACTANT	0.32	OUNCES/GALLONS OF SOLUTION	WILDFLOWER SEEDING (SPECIAL)
BLUE SPRAY PATTERN INDICATOR	1.00	OUNCES/GALLONS OF SOLUTION	WILDFLOWER SEEDING (SPECIAL)
WATER	1.00	GALLON	WILDFLOWER SEEDING (SPECIAL)

SEEDING OF SEDGE MEADOW SEED MIX FOR MESIC-WET SOILS			
PRODUCT	APPLICATION RATE		PAY ITEM
SPECIFIED PLS SEED MIX	191.25	OUNCES/ACRE	WILDFLOWER SEEDING (SPECIAL)
REGREEN COVER CROP	20.00	LBS/ACRE	WILDFLOWER SEEDING (SPECIAL)
MYCHORIZZAL INOCULANT	40.00	LBS/ACRE	WILDFLOWER SEEDING (SPECIAL)
RHIZOBIAL INOCULANT	TBD	OUNCES/ACRE	WILDFLOWER SEEDING (SPECIAL)

NON-SELECTIVE HERBICIDE MIXTURE - PISTOL SPRAY			
PRODUCT	APPLICATION RATE		PAY ITEM
ROUNDUP CUSTOM	192.00	OUNCES/ACRE	WILDFLOWER SEEDING (SPECIAL)
NONIONIC SURFACTANT	19.20	OUNCES/ACRE	WILDFLOWER SEEDING (SPECIAL)
BLUE SPRAY PATTERN INDICATOR	15.00	OUNCES/ACRE	WILDFLOWER SEEDING (SPECIAL)
WATER	30.00	GALLONS/ACRE MINIMUM	WILDFLOWER SEEDING (SPECIAL)

SEEDING OF SUPPLEMENTAL WETLAND SEED MIX FOR WET SOILS			
PRODUCT	APPLICATION RATE		PAY ITEM
SPECIFIED PLS SEED MIX	41.88	OUNCES/ACRE	WILDFLOWER SEEDING (SPECIAL)
REGREEN COVER CROP	20.00	LBS/ACRE	WILDFLOWER SEEDING (SPECIAL)
MYCHORIZZAL INOCULANT	40.00	LBS/ACRE	WILDFLOWER SEEDING (SPECIAL)
RHIZOBIAL INOCULANT	TBD	OUNCES/ACRE	WILDFLOWER SEEDING (SPECIAL)

NON-SELECTIVE HERBICIDE MIXTURE - BROADCAST SPRAY			
PRODUCT	APPLICATION RATE		PAY ITEM
ROUNDUP CUSTOM	96.00	OUNCES/ACRE	WILDFLOWER SEEDING (SPECIAL)
NONIONIC SURFACTANT	9.60	OUNCES/ACRE	WILDFLOWER SEEDING (SPECIAL)
BLUE SPRAY PATTERN INDICATOR	15.00	OUNCES/ACRE	WILDFLOWER SEEDING (SPECIAL)
WATER	30.00	GALLONS/ACRE MINIMUM	WILDFLOWER SEEDING (SPECIAL)

SEEDING OF SUPPLEMENTAL WOODLAND EDGE SEED MIX FOR MESIC SOILS			
PRODUCT	APPLICATION RATE		PAY ITEM
SPECIFIED PLS SEED MIX	78.00	OUNCES/ACRE	WILDFLOWER SEEDING (SPECIAL)
REGREEN COVER CROP	20.00	LBS/ACRE	WILDFLOWER SEEDING (SPECIAL)
MYCHORIZZAL INOCULANT	40.00	LBS/ACRE	WILDFLOWER SEEDING (SPECIAL)
RHIZOBIAL INOCULANT	TBD	OUNCES/ACRE	WILDFLOWER SEEDING (SPECIAL)

HERBICIDE APPLICATION #2 (THREE WEEKS PRIOR TO SEED INSTALLATION)			
NON-SELECTIVE HERBICIDE MIXTURE - PISTOL SPRAY			
PRODUCT	APPLICATION RATE		PAY ITEM
ROUNDUP CUSTOM	192.00	OUNCES/ACRE	WILDFLOWER SEEDING (SPECIAL)
NONIONIC SURFACTANT	19.20	OUNCES/ACRE	WILDFLOWER SEEDING (SPECIAL)
BLUE SPRAY PATTERN INDICATOR	15.00	OUNCES/ACRE	WILDFLOWER SEEDING (SPECIAL)
WATER	30.00	GALLONS/ACRE MINIMUM	WILDFLOWER SEEDING (SPECIAL)

SEEDING OF SUPPLEMENTAL SEDGE MEADOW SEED MIX FOR MESIC-WET SOILS			
PRODUCT	APPLICATION RATE		PAY ITEM
SPECIFIED PLS SEED MIX	32.50	OUNCES/ACRE	WILDFLOWER INTERSEEDING (SPECIAL)
REGREEN COVER CROP	20.00	LBS/ACRE	WILDFLOWER INTERSEEDING (SPECIAL)
MYCHORIZZAL INOCULANT	40.00	LBS/ACRE	WILDFLOWER INTERSEEDING (SPECIAL)
RHIZOBIAL INOCULANT	TBD	OUNCES/ACRE	WILDFLOWER INTERSEEDING (SPECIAL)

NON-SELECTIVE HERBICIDE MIXTURE - BROADCAST SPRAY			
PRODUCT	APPLICATION RATE		PAY ITEM
ROUNDUP CUSTOM	96.00	OUNCES/ACRE	WILDFLOWER SEEDING (SPECIAL)
NONIONIC SURFACTANT	9.60	OUNCES/ACRE	WILDFLOWER SEEDING (SPECIAL)
BLUE SPRAY PATTERN INDICATOR	15.00	OUNCES/ACRE	WILDFLOWER SEEDING (SPECIAL)
WATER	30.00	GALLONS/ACRE MINIMUM	WILDFLOWER SEEDING (SPECIAL)

MODEL - Default
 FILE NAME - c:\p\work\pollinator\sharan@illinois.gov\1183082\0366T32-SHT-COVER.dgn

USER NAME = Arpan,Sharan	DESIGNED -	REVISED -
	DRAWN -	REVISED -
	CHECKED -	REVISED -
PLOT DATE = 2/3/2026	DATE -	REVISED -

STATE OF ILLINOIS
DEPARTMENT OF TRANSPORTATION

SCHEDULES

SCALE: SHEET OF SHEETS STA. TO STA.

F.A.I. RTE.	SECTION	COUNTY	TOTAL SHEETS	SHEET NO.
55	*	LIVINGSTON	6	5
CONTRACT NO. 66T32				

WILDFLOWER INTERSEEDING (SPECIAL)			
HERBICIDE APPLICATION #1 (EIGHT WEEKS PRIOR TO SEED INSTALLATION)			
BROADLEAF SELECTIVE HERBICIDE MIXTURE - SPOT SPRAY			
PRODUCT	APPLICATION RATE		PAY ITEM
MILESTONE	0.32	OUNCES/GALLONS OF SOLUTION	WILDFLOWER INTERSEEDING (SPECIAL)
TRANSLINE	0.64	OUNCES/GALLONS OF SOLUTION	WILDFLOWER INTERSEEDING (SPECIAL)
NONIONIC SURFACTANT	0.32	OUNCES/GALLONS OF SOLUTION	WILDFLOWER INTERSEEDING (SPECIAL)
BLUE SPRAY PATTERN INDICATOR	1.00	OUNCES/GALLONS OF SOLUTION	WILDFLOWER INTERSEEDING (SPECIAL)
WATER	1.00	GALLON	WILDFLOWER INTERSEEDING (SPECIAL)
SELECTIVE HERBICIDE MIXTURE - BROADCAST SPRAY			
PRODUCT	APPLICATION RATE		PAY ITEM
INTENSITY	12.00	OUNCES/ACRE	WILDFLOWER INTERSEEDING (SPECIAL)
NONIONIC SURFACTANT	9.60	OUNCES/ACRE	WILDFLOWER INTERSEEDING (SPECIAL)
BLUE SPRAY PATTERN INDICATOR	15.00	OUNCES/ACRE	WILDFLOWER INTERSEEDING (SPECIAL)
WATER	30.00	GALLONS/ACRE MINIMUM	WILDFLOWER INTERSEEDING (SPECIAL)
CUT-STUMP HERBICIDE MIXTURE - BRUSH REMOVAL			
PRODUCT	APPLICATION RATE		PAY ITEM
ROUNDUP CUSTOM	64.00	OUNCES/GALLONS OF SOLUTION	WILDFLOWER INTERSEEDING (SPECIAL)
ARSENAL	8.00	OUNCES/GALLONS OF SOLUTION	WILDFLOWER INTERSEEDING (SPECIAL)
NONIONIC SURFACTANT	0.64	OUNCES/GALLONS OF SOLUTION	WILDFLOWER INTERSEEDING (SPECIAL)
BLUE SPRAY PATTERN INDICATOR	1.00	OUNCES/GALLONS OF SOLUTION	WILDFLOWER INTERSEEDING (SPECIAL)
WATER	30.00	GALLONS/ACRE MINIMUM	WILDFLOWER INTERSEEDING (SPECIAL)

HERBICIDE APPLICATION #2 (FOUR WEEKS PRIOR TO SEED INSTALLATION)			
SELECTIVE HERBICIDE MIXTURE - BROADCAST SPRAY			
PRODUCT	APPLICATION RATE		PAY ITEM
INTENSITY	12.00	OUNCES/ACRE	WILDFLOWER INTERSEEDING (SPECIAL)
NONIONIC SURFACTANT	9.60	OUNCES/ACRE	WILDFLOWER INTERSEEDING (SPECIAL)
BLUE SPRAY PATTERN INDICATOR	15.00	OUNCES/ACRE	WILDFLOWER INTERSEEDING (SPECIAL)
WATER	30.00	GALLONS/ACRE MINIMUM	WILDFLOWER INTERSEEDING (SPECIAL)

MODEL: Default
 FILE NAME: c:\p\work\pollinator\sharan@illinois.gov\1183082\0366132-SHT-COVER.dgn

USER NAME = Arpan,Sharan	DESIGNED -	REVISED -	STATE OF ILLINOIS DEPARTMENT OF TRANSPORTATION	SCHEDULES	F.A.I. RTE.	SECTION	COUNTY	TOTAL SHEETS	SHEET NO.	
	DRAWN -	REVISED -			55	*	LIVINGSTON	6	6	
	CHECKED -	REVISED -			CONTRACT NO. 66T32					
PLOT DATE = 1/22/2026	DATE -	REVISED -			SCALE:	SHEET	OF	SHEETS	STA.	TO STA.