

STATE OF ILLINOIS
DEPARTMENT OF TRANSPORTATION

F.A. RTE.	SECTION	COUNTY	TOTAL SHEETS	SHEET NO.
VAR	2026-02 TREE REMOVAL	ILLINOIS	10	1
ILLINOIS CONTRACT NO. 66T60			* BUREAU, LASALLE, LIVINGSTON, GRUNDY	

INDEX OF SHEETS

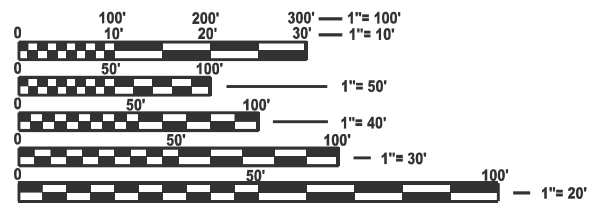
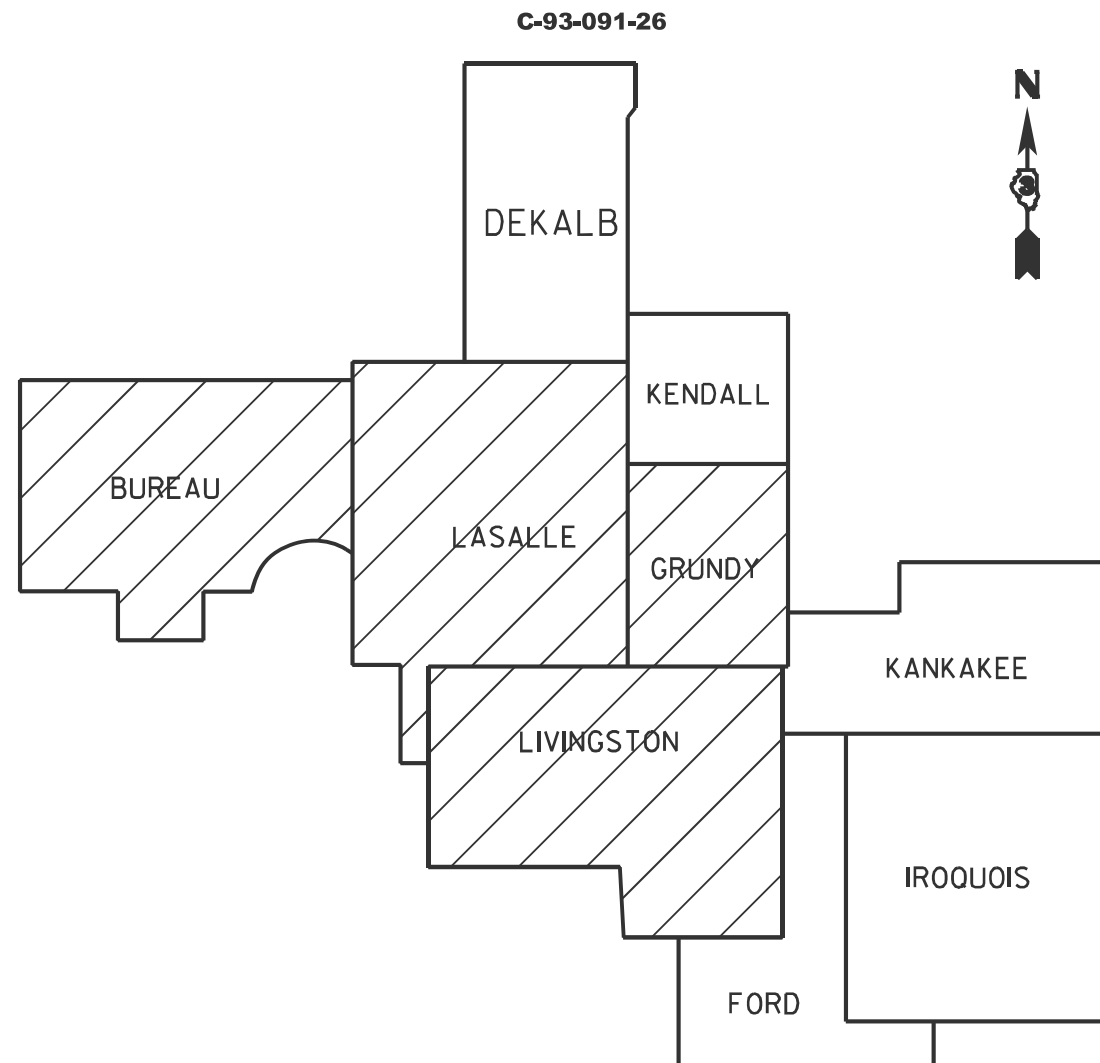
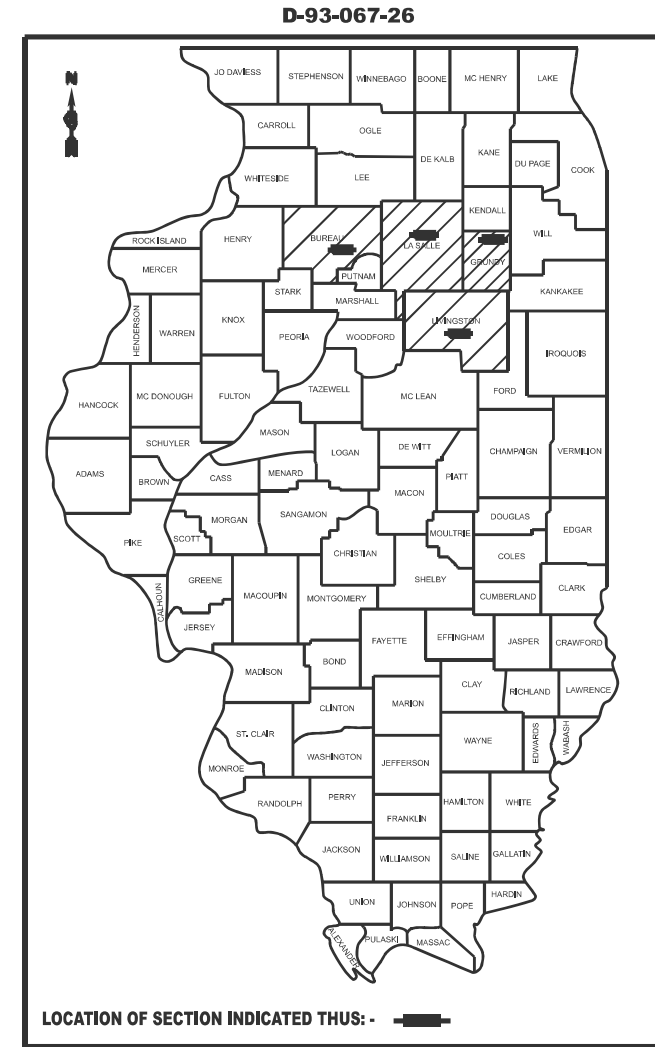
- 1 COVER SHEET
- 2 GENERAL NOTES
- 3 LOCATION MAPS
- 4 SUMMARY OF QUANTITIES
- 5 SCHEDULES: IL 29 EAST STREET TO LINCOLN AVENUE
- 6 SCHEDULES: I-80 (EXIT 61 & EXIT 70 INTERCHANGE)
- 7 SCHEDULES: I-80 (EXIT 97 INTERCHANGE)
- 8 SCHEDULES: I-80 (EXIT 75, 79, 81) INTERCHANGES
- 9 SCHEDULES: NEAR LIMESTONE REST AREA SOUTH OF PONTIAC
- 10 SCHEDULES: NEAR THREE RIVERS REST AREA WEST OF MINOOKA

LIST OF ILLINOIS DOT HIGHWAY STANDARDS

- 000001-09 STANDARD SYMBOLS, ABBREVIATIONS AND PATTERNS
- 001006 DECIMAL OF AN INCH AND OF A FOOT
- 701101-05 OFF-RD OPERATIONS, MULTILANE, 15' TO 24" FROM PAVEMENT EDGE
- 701106-02 OFF-RD OPERATIONS, MULTILANE, MORE THAN 15' AWAY
- 701301-04 LANE CLOSURE, 2L, 2W, SHORT TIME OPERATIONS
- 701901-11 TRAFFIC CONTROL DEVICES

**PROPOSED
HIGHWAY PLANS**

**VARIOUS ROUTES
SECTION TREE REMOVAL 2026-02
PROJECT:
TREE REMOVAL
VARIOUS COUNTIES**



FULL SIZE PLANS HAVE BEEN PREPARED USING STANDARD ENGINEERING SCALES. REDUCED SIZED PLANS WILL NOT CONFORM TO STANDARD SCALES. IN MAKING MEASUREMENTS ON REDUCED PLANS, THE ABOVE SCALES MAY BE USED.

J.U.L.I.E.
JOINT UTILITY LOCATION INFORMATION FOR EXCAVATION
1-800-892-0123
OR 811

PROJECT ENGINEER: JOSEPH E. KANNEL, P.E.
SQUAD LEADER: MOHAMED YOUSIF
TOWNSHIP(S): SHELBY, HALL, WALTHAM, WALLACE, UTICA, OTTAWA, EPPARDS, AUX SABLE
DISTRICT 3 NO. (815) 434-6131
CONTRACT NO. 66T60

LOCATION MAP
(NOT TO SCALE)

GROSS & NET LENGTH = POINT LOCATION

STATE OF ILLINOIS
DEPARTMENT OF TRANSPORTATION

SUBMITTED March 30, 20 26
Trisha Thompson REGIONAL ENGINEER

May 8 20 26
Scott Etk ENGINEER OF DESIGN AND ENVIRONMENT

May 8 20 26
Joseph Kannel DIRECTOR OF HIGHWAYS PROJECT IMPLEMENTATION

**PRINTED BY THE AUTHORITY
OF THE STATE OF ILLINOIS**

GENERAL NOTES

- 1 THE FINISHED EARTHWORK SHALL HAVE A VEGETATION SUSTAINING SOIL COVERING THE TOP FOUR INCHES (100 MILLIMETERS) IN AREAS TO BE SEEDED OR SODDED. THE VEGETATION SUSTAINING SOIL REQUIRED WILL NOT BE PAID FOR SEPARATELY BUT WILL BE INCLUDED IN THE COST OF THE TREE REMOVAL PAY ITEMS.
- 2 ALL EXCAVATED MATERIAL, WHICH INCLUDES DIGGING OR GRADING OF ANY SOIL OR FILL MATERIAL, WITH THE EXCEPTION OF AGGREGATE FILLS, MUST BE INCORPORATED WITHIN THE IDOT RIGHT OF WAY DUE TO ENVIRONMENTAL DOCUMENTATION REQUIREMENTS.
- 3 ANY REFERENCE TO A STANDARD IN THESE PLANS SHALL BE INTERPRETED TO MEAN THE EDITION AS INDICATED BY THE SUBNUMBER SHOWN IN THE LIST OF STANDARDS OR THE COPY INCLUDED IN THESE PLANS.
- 4 THE CONTRACTOR'S ATTENTION IS DIRECTED TO THE PRESENCE OF DEPARTMENT-OWNED UNDERGROUND UTILITIES WITHIN THE LIMITS OF THE PROPOSED IMPROVEMENT. THE CONTRACTOR SHALL REQUEST THE ILLINOIS DEPARTMENT OF TRANSPORTATION IN OTTAWA (815-434-8417) TO LOCATE THE UNDERGROUND FACILITIES, PROVIDING A MINIMUM OF 72 HOURS NOTICE. THE DEPARTMENT IS NOT A MEMBER OF THE JOINT UTILITY LOCATING INFORMATION FOR EXCAVATORS (JULIE) SYSTEM.
- 5 ALL DAMAGE TO DEPARTMENT OWNED UNDERGROUND FACILITIES, CAUSED BY THE CONTRACTOR SHALL BE REPAIRED TO THE SATISFACTION OF THE DEPARTMENT AT THE CONTRACTOR'S EXPENSE. THIS SHALL INCLUDE ALL TEMPORARY REPAIRS REQUIRED TO KEEP THE FACILITY OPERATIONAL WHILE MATERIAL IS BEING OBTAINED TO MAKE PERMANENT REPAIRS.
- 6 THE CONTRACTOR SHALL CONTACT JULIE AT LEAST 48 HOURS PRIOR TO EXCAVATION TO DETERMINE WHICH UTILITIES ARE IN THE AREA.

COMMITMENTS

1. NO TREES OVER 3 INCH DIAMATER SHALL BE REMOVED FROM MAY 15TH TO JULY 1ST IN BUREAU COUNTY
2. TREES OF ANY SIZE SHALL NOT BE REMOVED IN LIVINGSTON COUNTY FROM MAY 15TH TO JULY 1ST
3. TREES OF ANY SIZE SHALL NOT BE REMOVED IN LASALLE COUNTY FROM APRIL 1ST TO OCTOBER 31ST

STATE OF ILLINOIS
DEPARTMENT OF TRANSPORTATION
DISTRICT THREE
AS BUILT INFORMATION

SUPERVISING CONSTRUCTION FIELD ENGINEER

RESIDENT ENGINEER / TECHNICIAN

START & END DATES
OF CONSTRUCTION:

INSPECTORS:

**STATE OF ILLINOIS
DEPARTMENT OF TRANSPORTATION**

GENERAL NOTES

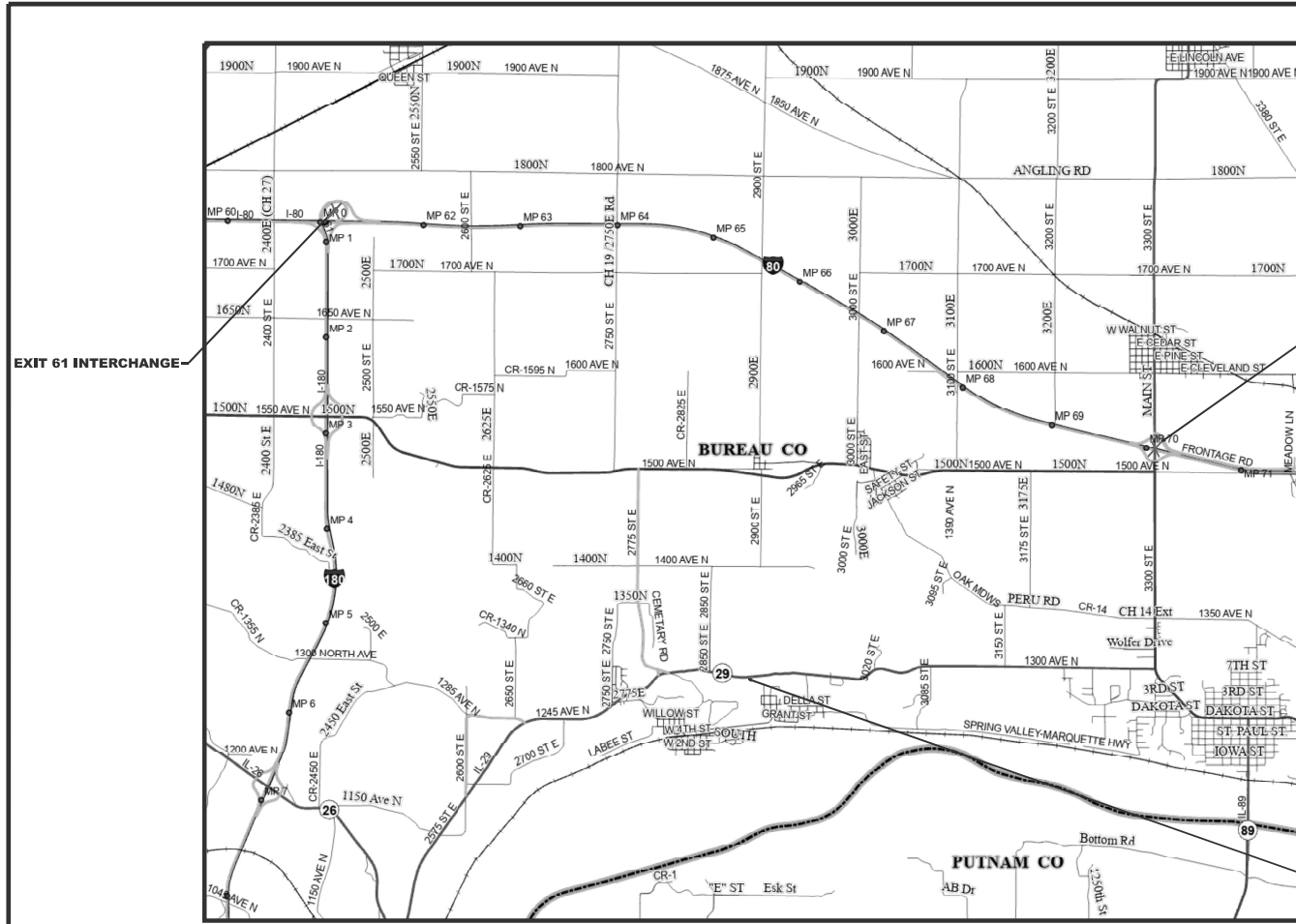
SCALE: SHEET OF SHEETS STA. TO STA.

F.A. RTE.	SECTION	COUNTY	TOTAL SHEETS	SHEET NO.
VAR	TREE REMOVAL 2026-02	*	10	2
ILLINOIS FED. AID PROJECT			CONTRACT NO. 66T60	

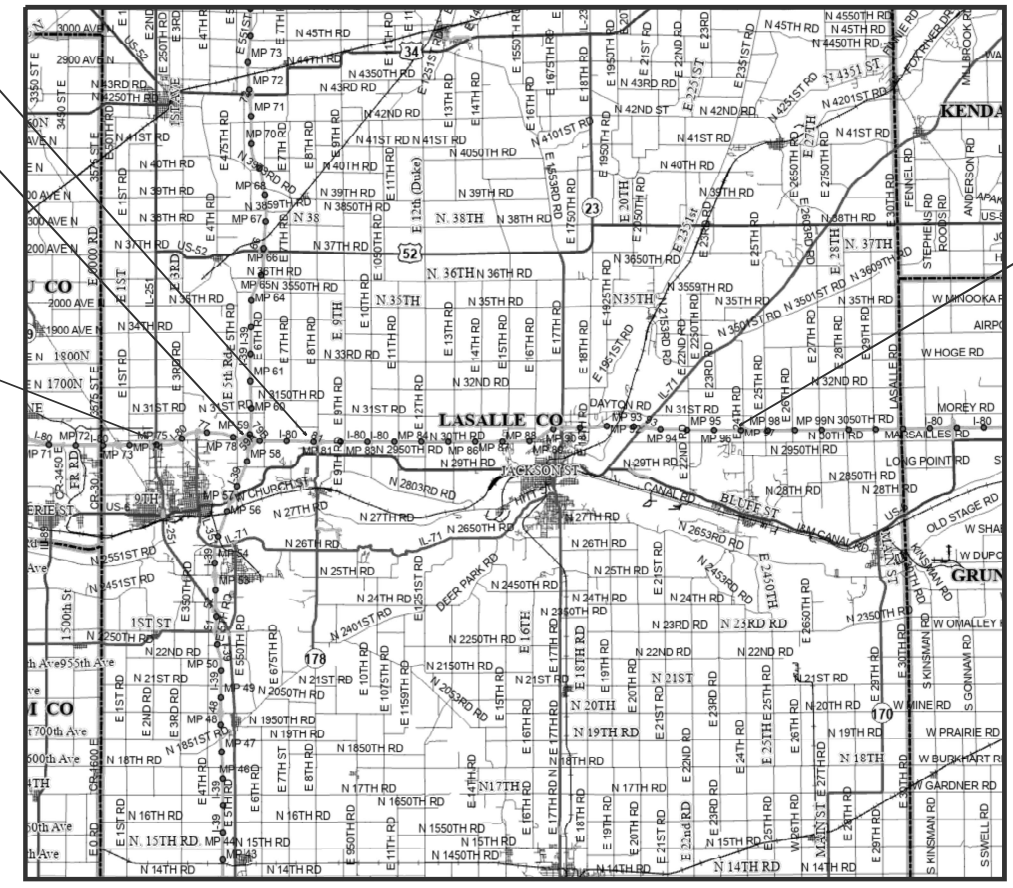
* BUREAU, LASALLE, LIVINGSTON, GRUNDY

MODEL: Default
FILE NAME: c:\pwworkspace\dotlan\pam.sharan@illinois.gov\119656566160-SHT-COVER.dgn

USER NAME = Arpan.Sharan	DESIGNED -	REVISED -
	DRAWN -	REVISED -
	CHECKED -	REVISED -
PLOT DATE = 3/9/2026	DATE -	REVISED -

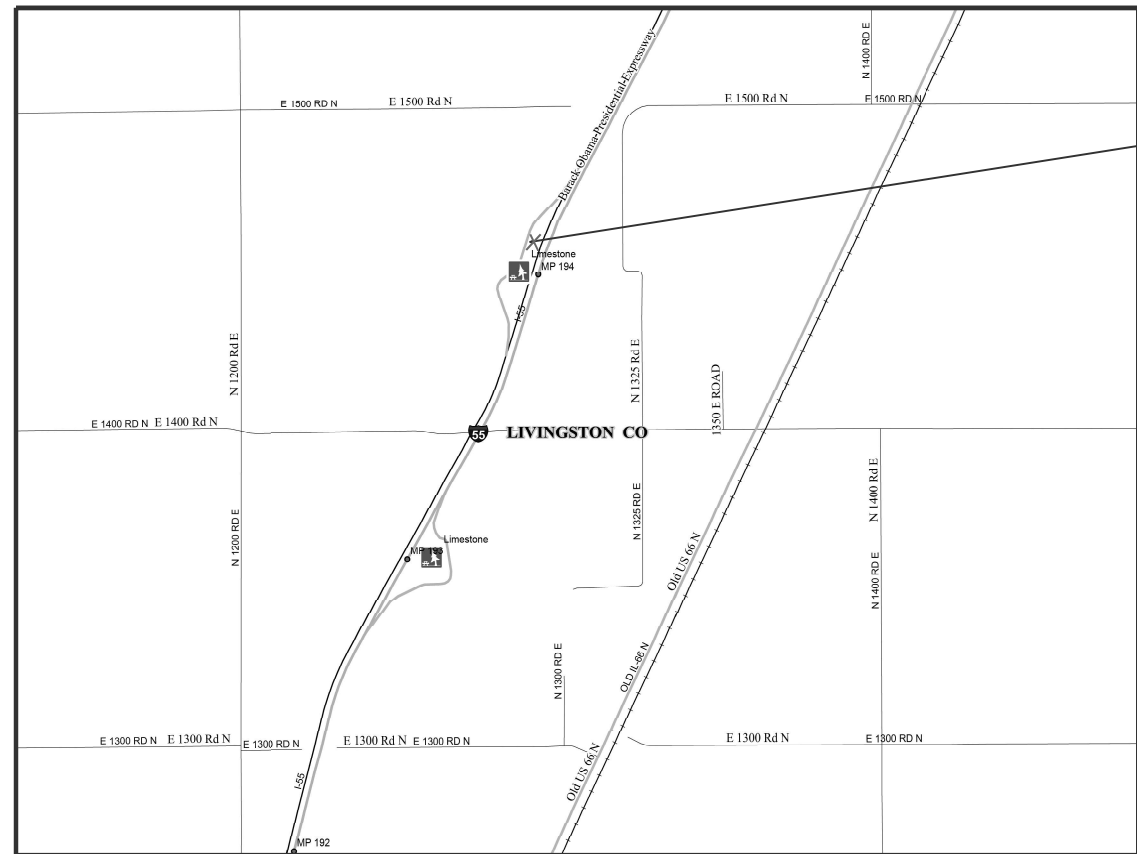


EXIT 81 INTERCHANGE
 EXIT 79 INTERCHANGE
 EXIT 70 INTERCHANGE
 EXIT 75 INTERCHANGE



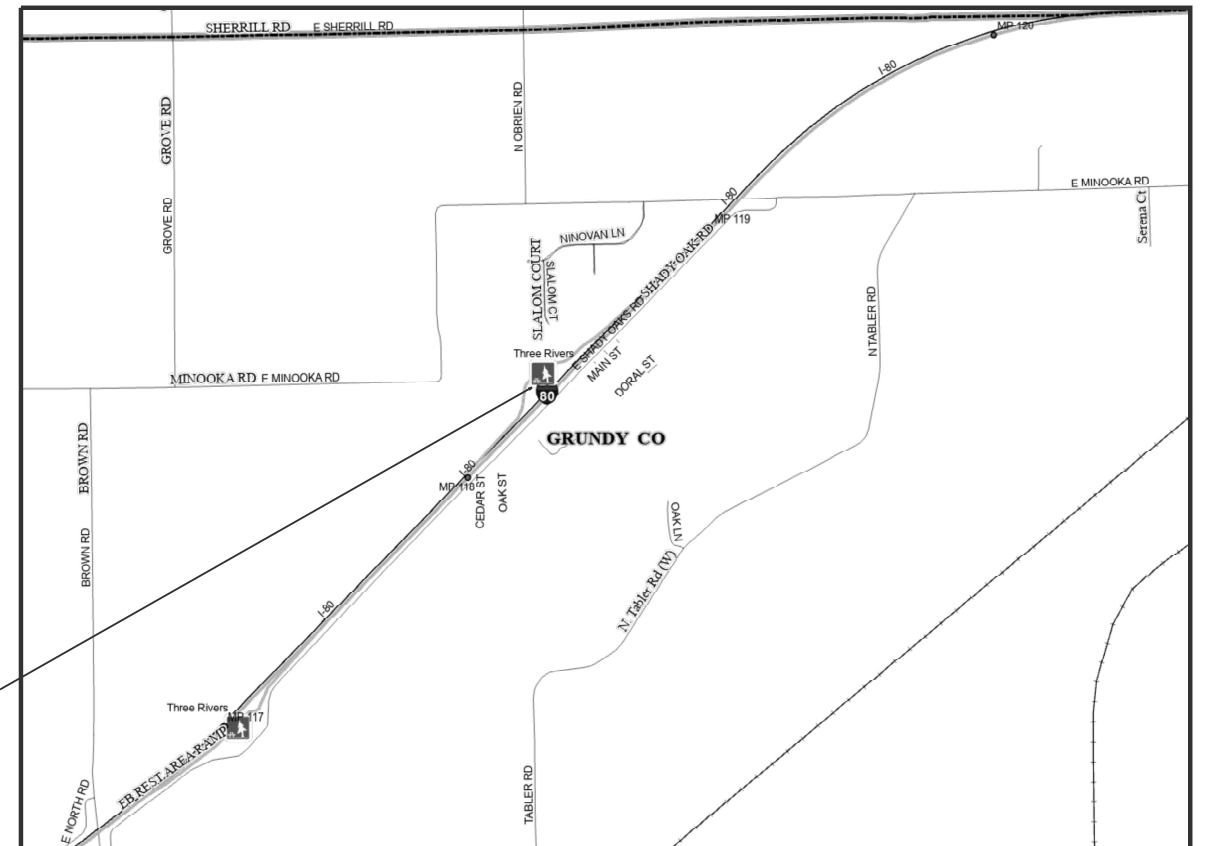
EXIT 97 INTERCHANGE

EAST STREET TO LINCOLN AVENUE



LIMESTONE REST AREA (SB)

THREE RIVERS REST AREA (WB)



MODEL: Default
 FILE NAME: c:\pw_work\widamp\sharan@illinois.gov\1196656\66T60-SHT1-COVER.dgn

USER NAME = Arpan,Sharan	DESIGNED -	REVISED -
	DRAWN -	REVISED -
	CHECKED -	REVISED -
PLOT DATE = 3/18/2026	DATE -	REVISED -

STATE OF ILLINOIS
 DEPARTMENT OF TRANSPORTATION

LOCATION MAPS

SCALE: SHEET OF SHEETS STA. TO STA.

F.A. RTE.	SECTION	COUNTY	TOTAL SHEETS	SHEET NO.
VAR	TREE REMOVAL 2026-02	*	10	3
CONTRACT NO. 66T60				

* BUREAU, LASALLE, LIVINGSTON, GRUNDY

CODE NO.	ITEM	UNIT	TOTAL QUANTITY	CONSTRUCTION CODE			
				BUREAU STATE 100%	LA SALLE STATE 100%	LIVINGSTON STATE 100%	GRUNDY STATE 100%
				ROADWAY	ROADWAY	ROADWAY	ROADWAY
				0031	0031	0031	0031
				RURAL	RURAL	RURAL	RURAL
20100110	TREE REMOVAL (6 TO 15 UNITS DIAMETER)	UNIT	9229	756	3373	5100	
20100210	TREE REMOVAL (OVER 15 UNITS DIAMETER)	UNIT	2636	1217	419	1000	
67100100	MOBILIZATION	L SUM	1	0.25	0.25	0.25	0.25
X2010410	TREE TRIMMING	EACH	90				90
X2010507	CLEARING (SPECIAL)	ACRE	50.5	7.5	34.75	8.25	

MODEL: Default
 FILE NAME: c:\pw\work\pw\arpan.sharan@illinois.gov\1196656\66T60-SHT-COVER.dgn

USER NAME = Arpan,Sharan	DESIGNED -	REVISED -
	DRAWN -	REVISED -
	CHECKED -	REVISED -
PLOT DATE = 3/24/2026	DATE -	REVISED -

**STATE OF ILLINOIS
DEPARTMENT OF TRANSPORTATION**

SUMMARY OF QUANTITIES

SCALE: SHEET OF SHEETS STA. TO STA.

F.A. RTE.	SECTION	COUNTY	TOTAL SHEETS	SHEET NO.
VAR	TREE REMOVAL 2026-02	*	10	4
			CONTRACT NO. 66T60	
		ILLINOIS	FED. AID PROJECT	

* BUREAU, LASALLE, LIVINGSTON, GRUNDY

IL 29							BUREAU COUNTY
NUMBER AND DIRECTION	NUMBER OF TREES/SIZE	CLEARING SPECIAL	TREE REM DIA 6 TO 15	TREE REM DIA OVER 15	GENERAL TYPE OF TREE	GIS PIN	REMARKS/NOTES
		ACRES	UNIT	UNIT	SPECIES	LAT/LONG	LADD YARD - 347
COUNTRY ROAD 2775E/EAST STREET TO LINCOLN AVENUE							
1	NB	1		24	OAK	41.33324697034658, -89.29575075797915	
2	NB	1		28	OAK	41.333303356041704, -89.2948889097765	
3	NB	1		21	OAK	41.33333057479576, -89.29413954493626	
4	NB	1		22	OAK	41.33333057479576, -89.29413954493626	
5	NB	1		25	ELM	41.33338497479278, -89.29352780018684	
6	NB	1		28	ELM	41.333412561913356, -89.29336137099892	
7	NB	1		26	ELM	41.333524837449076, -89.29188939454357	
8	NB	1		29	ELM	41.333552871863645, -89.29155621897891	
9	NB	1		26	ELM	41.33355188204079, -89.29127914098477	
10	NB	1		22	OAK	41.33357943058541, -89.29094541456377	
11	NB	1		30	OAK	41.333579491044546, -89.29052987691104	
12	SB	1		24	OAK	41.33374589690514, -89.28891734091735	
13	SB	1		24	OAK	41.333799050155314, -89.28936261536856	
14	SB	1		25	MAPLE	41.33382660664351, -89.28955622291687	
15	SB	1		25	MAPLE	41.33382837668994, -89.289889/136842	
16	SB	1		20	MAPLE	41.333801457620766, -89.29014053494261	
17	SB	1		25	MAPLE	41.333800860925045, -89.2904450866269	
18	SB	1		24	MAPLE	41.33380134115911, -89.29077850114878	
19	SB	1		22	ELM	41.33377105459849, -89.29114038942654	
20	SB	1		24	ELM	41.333663413622766, -89.29205596295687	
21	SB	1		25	OAK	41.3335235354897, -89.29419557395393	
22	SB	1		22	OAK	41.333515714138976, -89.29433866458588	
23	NB	1		31	COTTONWOOD	41.33296323832899, -89.30044555486953	
24	NB	1		20	COTTONWOOD	41.3329303000012, -89.30031096458589	
25	SB	1		35	OAK	41.333152600049296, -89.30078048239578	
26	SB	1		27	ELM	41.33312681406686, -89.30028048239579	
27	SB	1		29	ELM	41.33385428365397, -89.3061673533263	
28	SB	1		32	ELM	41.33385673367305, -89.3060557160606	
29	SB	1		25	OAK	41.333825974483084, -89.30580785563495	
30	SB	1		22	OAK	41.333821214195645, -89.30572756458588	
31	SB	1		30	COTTONWOOD	41.33382322819767, -89.3056164646048	
32	SB	1		36	COTTONWOOD	41.333795528193406, -89.3055331646048	
33	SB	1		42	COTTONWOOD	41.333928286218864, -89.30675804681377	
34	SB	1		32	COTTONWOOD	41.33393634221343, -89.30681096460478	
35	SB	1		30	COTTONWOOD	41.33391367750608, -89.30683464010124	
36	SB	1		45	COTTONWOOD	41.33394124826009, -89.30694637777529	
37	SB	1		25	COTTONWOOD	41.33396836947441, -89.30708493005548	
38	SB	1		25	COTTONWOOD	41.33396823409866, -89.30716747452783	
39	SB	1		27	COTTONWOOD	41.333995641470395, -89.3072793488157	
40	NB	1		26	COTTONWOOD	41.333769742192786, -89.3067248823769	
41	NB	1		28	COTTONWOOD	41.33379351419054, -89.30681096460478	
42	NB	1		25	COTTONWOOD	41.33379754219628, -89.30691938239582	
43	NB	1		24	COTTONWOOD	41.33382524219971, -89.30697756460478	
44	NB	1		23	COTTONWOOD	41.33385304220311, -89.30714694681377	

TOTALS			0	0	1180
---------------	--	--	----------	----------	-------------

MODEL - Default
 FILE NAME - G:\pw\work\bxtdolampas.sharan@illinois.gov\119656566180-SHT-COVER.dgn

USER NAME = Arpan.Sharan	DESIGNED -	REVISED -
	DRAWN -	REVISED -
	CHECKED -	REVISED -
PLOT DATE = 3/24/2026	DATE -	REVISED -

STATE OF ILLINOIS
DEPARTMENT OF TRANSPORTATION

SCHEDULES			
SCALE:	SHEET	OF	SHEETS
	STA.		TO STA.

F.A. RTE.	SECTION	COUNTY	TOTAL SHEETS	SHEET NO.
VAR	TREE REMOVAL 2026-02	*	10	5
CONTRACT NO. 66T60				

ILLINOIS FED. AID PROJECT
 * BUREAU, LASALLE, LIVINGSTON, GRUNDY

INTERSTATE 80 (I-80)								BUREAU COUNTY
NUMBER AND DIRECTION	NUMBER OF TREES/SIZE	CLEARING SPECIAL	TREE REM DIA 6 TO 15	TREE REM DIA OVER 15	GENERAL TYPE OF TREE	GIS PIN	REMARKS/NOTES	
		ACRES	UNIT	UNIT	SPECIES	LAT/LONG	LADD YARD - 347	
EXIT 61 INTERCHANGE - CENTER AND EASTERN QUADRANTS								
1	WB	VARIES	5		BRUSH	41.401153653429695, -89.38142878016905		
EXIT 61 INTERCHANGE - CENTER QUADRANT								
2	EB	VARIES	0.5		BRUSH	41.39867492499377, -89.38251239131334		
EXIT 70 INTERCHANGE - NW QUADRANT								
3	WB	VARIES	0.75	75	37	MULTIPLE	41.368590801487045, -89.21981547564637 CLEARING SPECIAL BRUSH MIXED WITH PINES	
EXIT 70 INTERCHANGE - NE QUADRANT								
4	WB	VARIES		156		MULTIPLE	41.36835142237067, -89.2179080338444	
EXIT 70 INTERCHANGE - SW QUADRANT								
5	EB	VARIES	1.25	500		MULTIPLE	41.36731729446725, -89.21998771955491 CLEARING SPECIAL BRUSH MIXED WITH PINES	
EXIT 70 INTERCHANGE - SE QUADRANT								
6	EB	1		11		CEDAR	41.36673600220915, -89.21850225168401	
7	EB	1		14		OAK	41.36674194749048, -89.21709894830168	
TOTALS			7.5	756	37			

MODEL: Default
 FILE NAME: c:\p\work\p\sharan.sharan@illinois.gov\119866666760-SHT-COVER.dgn

USER NAME = Arpan,Sharan	DESIGNED -	REVISED -
	DRAWN -	REVISED -
	CHECKED -	REVISED -
PLOT DATE = 2/24/2026	DATE -	REVISED -

STATE OF ILLINOIS
DEPARTMENT OF TRANSPORTATION

SCHEDULES	
SCALE:	SHEET OF SHEETS STA. TO STA.

F.A. RTE.	SECTION	COUNTY	TOTAL SHEETS	SHEET NO.
VAR	TREE REMOVAL 2026-02	*	10	6
CONTRACT NO. 66T60				
ILLINOIS FED. AID PROJECT				

* BUREAU, LASALLE, LIVINGSTON, GRUNDY

INTERSTATE 80 (I-80)							LASALLE COUNTY
NUMBER AND DIRECTION	NUMBER OF TREES/SIZE	CLEARING SPECIAL	TREE REM DIA 6 TO 15	TREE REM DIA OVER 15	GENERAL TYPE OF TREE	GIS PIN	REMARKS/NOTES
		ACRES	UNIT	UNIT	SPECIES	LAT/LONG	OTTAWA YARD - 343
EXIT 97 INTERCHANGE - SW QUADRANT							
1	EB	75	240	32	MULTIPLE	41.374842106415386, -88.70715206931031	
EXIT 97 INTERCHANGE - SE QUADRANT							
2	EB	80	220	32	MULTIPLE	41.37482373947801, -88.7052564800167	
EXIT 97 INTERCHANGE - NW QUADRANT							
3	WB	6	18	0	MULTIPLE	41.375975012077745, -88.70690872071204	
EXIT 97 INTERCHANGE - NE QUADRANT							
4	WB	96	360	32	MULTIPLE	41.375975012077745, -88.70531012425887	

TOTALS			0	838	96		
---------------	--	--	----------	------------	-----------	--	--

MODEL: Default
 FILE NAME: c:\p\work\p\sharan.sharan@illinois.gov\d119656166T60-SHT-COVER.dgn

USER NAME = Arpan,Sharan	DESIGNED -	REVISED -
	DRAWN -	REVISED -
	CHECKED -	REVISED -
PLOT DATE = 2/24/2026	DATE -	REVISED -

STATE OF ILLINOIS
DEPARTMENT OF TRANSPORTATION

SCHEDULES			
F.A. RTE.	SECTION	COUNTY	TOTAL SHEETS
VAR	TREE REMOVAL 2026-02	*	10
			CONTRACT NO. 66T60
SCALE:	SHEET OF SHEETS	STA. TO STA.	

ILLINOIS	FED. AID PROJECT
* BUREAU, LASALLE, LIVINGSTON, GRUNDY	

INTERSTATE 80 (I-80)							LASALLE COUNTY	
NUMBER AND DIRECTION	NUMBER OF TREES/SIZE	CLEARING SPECIAL	TREE REM DIA 6 TO 15	TREE REM DIA OVER 15	GENERAL TYPE OF TREE	GIS PIN	REMARKS/NOTES	
		ACRES	UNIT	UNIT	SPECIES	LAT/LONG	LASALLE YARD - 344	
Exit 75 INTERCHANGE - NW QUADRANT								
1	WB	VARIES	1.25	0	0	MULTIPLE	41.36607032948522, -89.12684192044532	
Exit 75 INTERCHANGE - NE QUADRANT								
2	WB	VARIES	0.75	0	0	MULTIPLE	41.366051178423625, -89.12439222638221	
Exit 75 INTERCHANGE - SW QUADRANT								
3	EB	VARIES	4.25	1050	0	MULTIPLE	41.36471797677817, -89.12685841012569	
Exit 75 INTERCHANGE - SE QUADRANT								
4	EB	VARIES	4	15	0	MULTIPLE	41.36464380923198, -89.12425865832941	
Exit 79 INTERCHANGE - NW QUADRANT								
5	WB	VARIES	8	125	0	MULTIPLE	41.36927591740431, -89.0610499714775	BRUSH CENTER OF CLOVER LEAF, TREES OUTSIDE
Exit 79 INTERCHANGE - NE QUADRANT								
6	WB	VARIES	8	200	18	MULTIPLE	41.36901021416084, -89.0574021785991	BRUSH CENTER OF CLOVER LEAF, TREES OUTSIDE
Exit 79 INTERCHANGE - SW QUADRANT - OUTER								
7	EB	VARIES	2	280	80	MULTIPLE	41.3649198576096, -89.06110361549041	OUTSIDE OF CLOVER LEAF
Exit 79 INTERCHANGE - SE QUADRANT - OUTER								
8	EB	VARIES	0	250	0	MULTIPLE	41.36688454914861, -89.05558901096248	OUTSIDE OF CLOVER LEAF
Exit 81 INTERCHANGE - NW QUADRANT								
9	WB	VARIES	2	40	45	MULTIPLE	41.36818095782844, -89.01156233198117	
Exit 81 INTERCHANGE - NE QUADRANT								
10	WB	VARIES	1.5	75	100	MULTIPLE	41.368187872253564, -89.00911559795601	
Exit 81 INTERCHANGE - SW QUADRANT								
11	EB	VARIES	1	250	40	MULTIPLE	41.36712987407311, -89.01113794979415	
Exit 81 INTERCHANGE - SE QUADRANT								
12	EB	VARIES	2	250	40	MULTIPLE	41.36710471608435, -89.00923293726444	

TOTALS			34.75	2535	323		
--------	--	--	-------	------	-----	--	--

MODEL: Default
FILE NAME: c:\pwworking\arpan.sharan@illinois.gov\1196859\66T60-SHT-COVER.dgn

USER NAME = Arpan,Sharan	DESIGNED -	REVISED -	STATE OF ILLINOIS DEPARTMENT OF TRANSPORTATION	SCHEDULES				F.A. RTE.	SECTION	COUNTY	TOTAL SHEETS	SHEET NO.		
	DRAWN -	REVISED -		SCALE:	SHEET	OF	SHEETS	STA.	TO STA.	VAR.	TREE REMOVAL 2026-02	*	10	8
	CHECKED -	REVISED -		CONTRACT NO. 66T60										
PLOT DATE = 2/24/2026	DATE -	REVISED -		ILLINOIS FED. AID PROJECT * BUREAU, LASALLE, LIVINGSTON, GRUNDY										

INTERSTATE 55 (I-55)							LIVINGSTON COUNTY
NUMBER AND DIRECTION	NUMBER OF TREES/SIZE	CLEARING SPECIAL	TREE REM DIA 6 TO 15	TREE REM DIA OVER 15	GENERAL TYPE OF TREE	GIS PIN	REMARKS/NOTES
		ACRES	UNIT	UNIT	SPECIES	LAT/LONG	PONTIAC YARD - 334
LIMESTONE REST AREA SOUTH OF PONTIAC, IL							
1	SB	VARIES	5.5	3600	500	MULTIPLE	40.83693257877051, -88.68288020416223
2	NB	VARIES	2.75	1500	500	MULTIPLE	40.823750267039905, -88.68833187050726

TOTALS			8.25	5100	1000		
---------------	--	--	-------------	-------------	-------------	--	--

MODEL: Default
 FILE NAME: c:\pwwork\pwidolaraman.sharan@illinois.gov\1198656166160-SHT-COVER.dgn

USER NAME = Arpan,Sharan	DESIGNED -	REVISED -
	DRAWN -	REVISED -
	CHECKED -	REVISED -
PLOT DATE = 2/24/2026	DATE -	REVISED -

STATE OF ILLINOIS
DEPARTMENT OF TRANSPORTATION

SCHEDULES

SCALE: SHEET OF SHEETS STA. TO STA.

F.A. RTE.	SECTION	COUNTY	TOTAL SHEETS	SHEET NO.
VAR	TREE REMOVAL 2026-02	*	10	9
			CONTRACT NO. 66T60	
ILLINOIS FED. AID PROJECT				

* BUREAU, LASALLE, LIVINGSTON, GRUNDY

INTERSTATE 80 (I-80)					GRUNDY COUNTY	
NUMBER AND DIRECTION	NUMBER OF TREES/SIZE	TREE TRIMMING	GENERAL TYPE OF TREE	GIS PIN	REMARKS/NOTES	
		EACH	SPECIES	LAT/LONG	MORRIS YARD - 351	
THREE RIVERS REST AREA WEST OF MINOOKA, IL						
1	WB	90	90	BUR OAK	41.44732922349617, -88.32951583811573	

TOTALS				90		
---------------	--	--	--	-----------	--	--

MODEL: Default
 FILE NAME: c:\pwworkspace\arpan.sharan@illinois.gov\11965666160-SHT-COVER.dgn

USER NAME = Arpan,Sharan	DESIGNED -	REVISED -
	DRAWN -	REVISED -
	CHECKED -	REVISED -
PLOT DATE = 2/18/2026	DATE -	REVISED -

STATE OF ILLINOIS
DEPARTMENT OF TRANSPORTATION

SCHEDULES

SCALE: SHEET OF SHEETS STA. TO STA.

F.A. RTE.	SECTION	COUNTY	TOTAL SHEETS	SHEET NO.
VAR	TREE REMOVAL 2026-02	*	10	10
CONTRACT NO. 66T60				
ILLINOIS FED. AID PROJECT				

* BUREAU, LASALLE, LIVINGSTON, GRUNDY