

STATE OF ILLINOIS  
DEPARTMENT OF TRANSPORTATION  
DIVISION OF HIGHWAYS

**PROPOSED  
HIGHWAY PLANS**

FAI 94 I-90/94 (DAN RYAN EXPRESSWAY)  
AT 63rd STREET (FAU 1519)  
SECTION 1920-B  
PROJECT: ACNHPP-0005(990)  
BRIDGE SUPERSTRUCTURE REPLACEMENT  
SN 016-1149  
COOK COUNTY  
C-91-190-10

F.A.I. RYE.	SECTION	COUNTY	TOTAL SHEETS	SHEET NO.
094	1920-B	COOK	142	1
ILLINOIS			CONTRACT NO. 60J15	

D-91-190-10  
\*142 & 1 = 143  
\*143 & 1 = 144

FOR INDEX OF SHEETS, SEE SHEET NO. 2

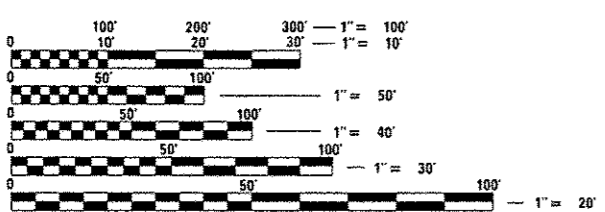
**TRAFFIC DATA**

63RD STREET:  
EXISTING ADT = 10,600 (2011)  
SPEED LIMIT = 30 MPH  
DESIGN SPEED = 30 MPH

THE IMPROVEMENT IS LOCATED  
WITHIN THE CITY OF CHICAGO

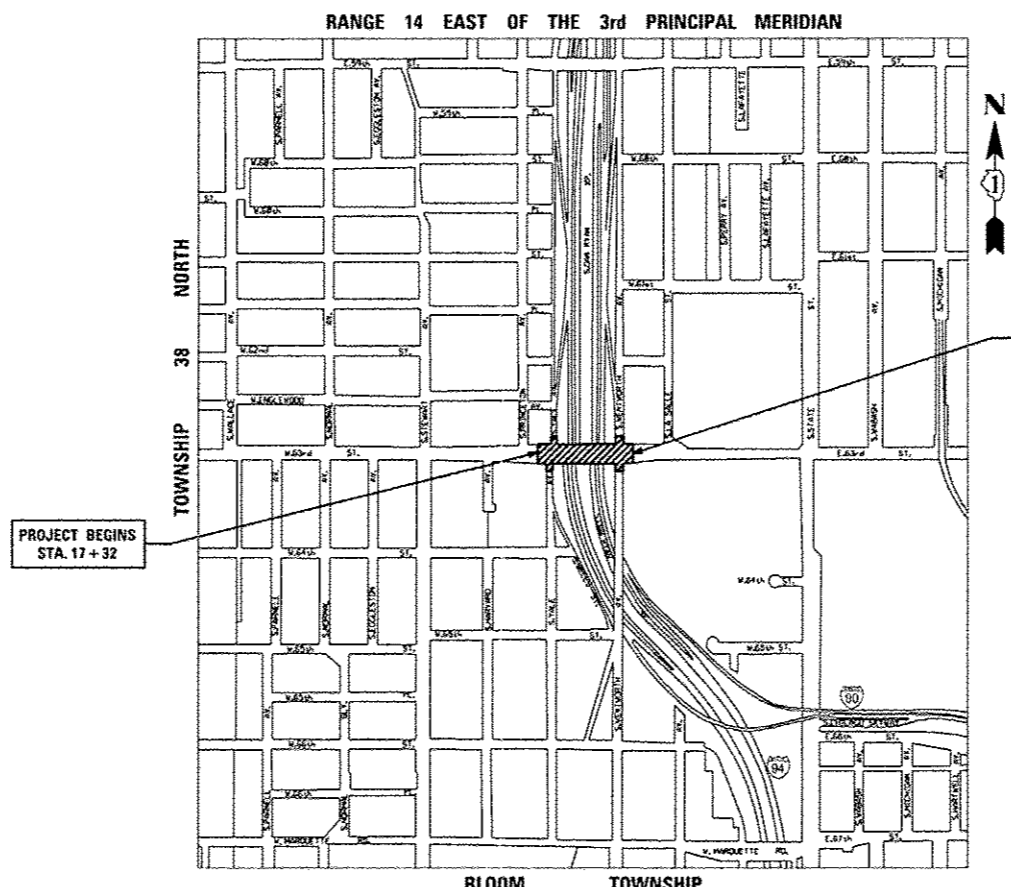


LOCATION OF SECTION INDICATED THUS: -



FULL SIZE PLANS HAVE BEEN PREPARED USING STANDARD ENGINEERING SCALES. REDUCED SIZED PLANS WILL NOT CONFORM TO STANDARD SCALES. IN MAKING MEASUREMENTS ON REDUCED PLANS, THE ABOVE SCALES MAY BE USED.

C.U.A.N.  
CHICAGO UTILITY ALERT NETWORK  
1-312-744-7000  
J.U.L.I.E.  
JOINT UTILITY LOCATION INFORMATION FOR EXCAVATION  
1-800-892-0123  
OR 811



PROJECT BEGINS  
STA. 17+32

PROJECT ENDS  
STA. 24+53

63RD STREET OVER FAI 90/94  
STRUCTURE NO. 016-1149  
REMOVE EXISTING 5 SPAN PPC DECK BEAM SUPERSTRUCTURE. REPAIR OR REPLACE PORTIONS OF THE SUBSTRUCTURE. REPLACE SUPERSTRUCTURE WITH A CONTINUOUS COMPOSITE STEEL BEAM SUPERSTRUCTURE.

PROJECT ENGINEER: CRAIG BAUER 847-705-4265  
PROJECT MANAGER: LONG TRAN 847-705-4232

CONTRACT NO. 60J15

GROSS LENGTH = 721 FT. = 0.14 MILE  
NET LENGTH = 721 FT. = 0.14 MILE



8501 W. Higgins Road, Suite 280  
Chicago, Illinois 60631  
(773) 399-0112

PROFESSIONAL ENGINEER'S SIGN & SEAL  
*Thomas N. Stevens*  
062-046898  
REGISTERED PROFESSIONAL ENGINEER OF ILLINOIS  
EXPIRES: 11-30-2015

STATE OF ILLINOIS  
DEPARTMENT OF TRANSPORTATION  
DIVISION OF HIGHWAYS  
SUBMITTED *Mar 13 20 14*  
*John Fortman*  
DEPUTY DIRECTOR OF HIGHWAYS, REGION ENGINEER  
*May 9 20 14*  
*John D. Baranzelli, PE*  
ENGINEER OF DESIGN AND ENVIRONMENT  
*May 9 20 14*  
*Omer Osman, PE*  
DIRECTOR OF HIGHWAYS, CHIEF ENGINEER

PRINTED BY THE AUTHORITY  
OF THE STATE OF ILLINOIS

Rev. 10-4-14