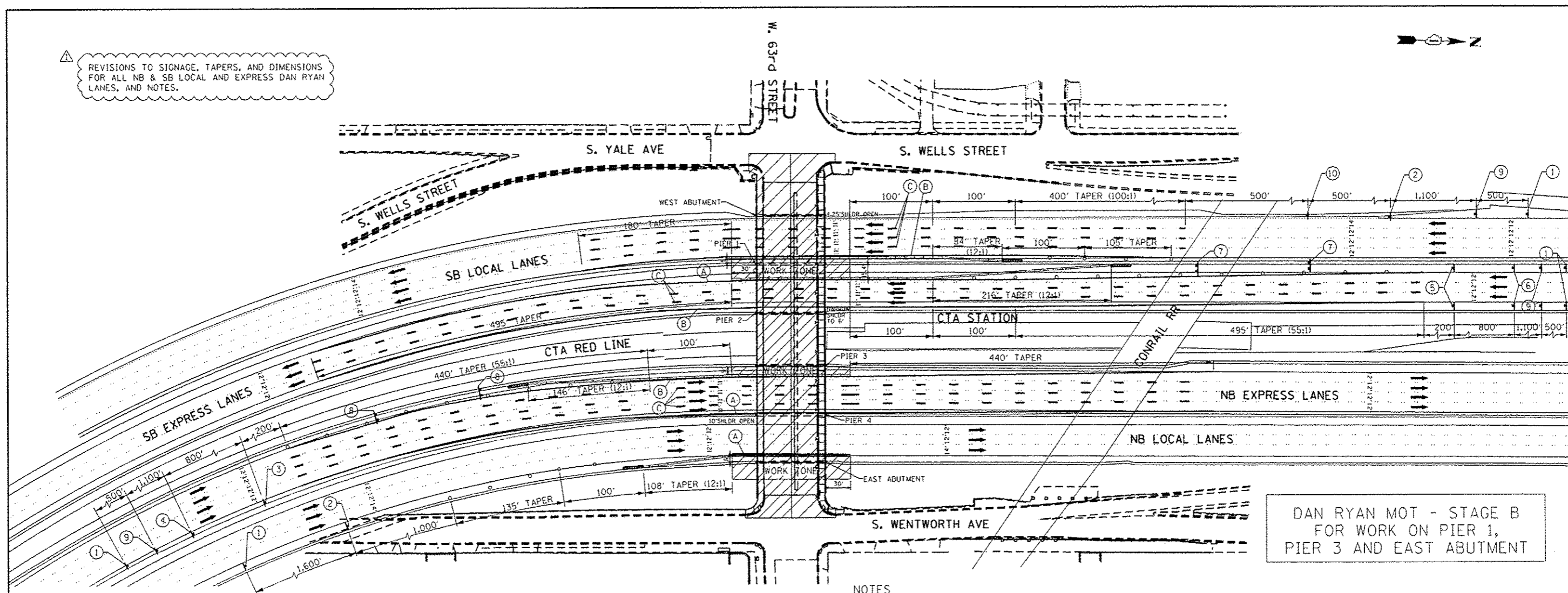


REVISIONS TO SIGNAGE, TAPERS, AND DIMENSIONS FOR ALL NB & SB LOCAL AND EXPRESS DAN RYAN LANES, AND NOTES.



DAN RYAN MOT - STAGE B FOR WORK ON PIER 1, PIER 3 AND EAST ABUTMENT

NOTES

- TEMPORARY CONCRETE BARRIERS SHALL HAVE IMPACT ATTENUATOR AT END OF BARRIER AS PER DISTRICT ONE STANDARD.
- FOR BOTH STAGES OF CONSTRUCTION ON 63RD STREET THERE WILL BE 2 STAGES ON THE EXPRESSWAY IN ORDER TO SHIFT WORK AREAS SO THAT ADJACENT PIERS/ABUTMENTS ARE NOT BEING WORKED ON AT THE SAME TIME.
DURING DAN RYAN STAGE B THE CONTRACTOR SHALL CONFINE WORK TO THE FOLLOWING PIERS/ABUTMENTS:
- PIER 1, PIER 3, EAST ABUTMENT
SEE PREVIOUS SHEET FOR DAN RYAN STAGE A.
- DURING BOTH STAGES OF 63RD STREET BRIDGE SUPERSTRUCTURE CONSTRUCTION, SWITCH DAN RYAN MOT BETWEEN DAN RYAN STAGE A AND STAGE B AS NEEDED DEPENDING ON PIER REMOVAL AND CONSTRUCTION.
- USE APPLICABLE PORTIONS OF IDOT DISTRICT ONE STANDARDS: "TRAFFIC CONTROL DETAILS FOR FREEWAY SINGLE & MULTI-LANE WEAVE" (TC-09) AND "TRAFFIC CONTROL DETAILS FOR FREEWAY SHOULDER CLOSURES AND PARTIAL RAMP CLOSURES" (TC-17).
ALSO USE IDOT STANDARD "APPROACH TO LANE CLOSURE, FREEWAY/EXPRESSWAY" (701400) FOR SIGNING IN ADVANCE OF WHAT IS SHOWN ON THESE PLANS.
- ALL EXISTING PAVEMENT MARKINGS REMOVED DUE TO TRAFFIC CONTROL SHALL BE REPLACED IN KIND AS DIRECTED BY THE ENGINEER.
- FOR THE REMOVAL OF EXISTING PAVEMENT MARKING AND PLACEMENT OF TEMPORARY AND PERMANENT PAVEMENT MARKING, USE IDOT DISTRICT ONE STANDARD: "MULTI-LANE FREEWAY PAVEMENT MARKING DETAILS" (TC-12), MODIFIED AS DIRECTED BY THE ENGINEER.
- FOR NIGHTTIME LANE CLOSURES, USE APPLICABLE PORTIONS OF IDOT STANDARDS 701400 AND 701401, AND DISTRICT ONE STANDARDS TC-09 AND TC-12. ALSO ADHERE TO THE SPECIFICATIONS OF DISTRICT ONE SPECIAL PROVISION "KEEPING THE EXPRESSWAY OPEN TO TRAFFIC" (9010001) LATEST EDITION.
- WORK IN ACCORDANCE WITH TRAFFIC CONTROL AND PROTECTION STANDARDS WILL NOT BE PAID FOR SEPARATELY, BUT SHALL BE PAID FOR AS "TRAFFIC CONTROL AND PROTECTION (EXPRESSWAY)", LUMP SUM.
- TAPE TEMPORARY PAVEMENT MARKINGS SHALL BE USED ON EXISTING/NEWLY CONSTRUCTED SURFACES. TEMPORARY PAINT SHALL BE USED ON 63RD STREET TEMPORARY PAVEMENT OR PAVEMENT TO BE REMOVED. PAINT OR TEMPORARY PAINT SHALL NOT BE USED ON EXPRESSWAY OR RAMP PAVEMENT.
- TEMPORARY PAVEMENT MARKING (PAINT) SHALL BE REQUIRED ON ALL 63RD ST. TEMPORARY PAVEMENT SURFACES OVER THE WINTER MONTHS. PAINT USED OVER THE WINTER MONTHS IN THE TRANSITION AREAS ON EXISTING SURFACES SHALL BE REMOVED BY GRINDING WHEN THE FINAL PAVEMENT MARKINGS ARE INSTALLED. ON EXPRESSWAYS, EPOXY MARKINGS SHALL BE REQUIRED ON ALL TEMPORARY PAVEMENT SURFACES OVER THE WINTER MONTHS. EPOXY USED OVER THE WINTER IN TRANSITION AREAS AT THE LIMITS OF CONSTRUCTION ON EXISTING SURFACES SHALL BE REMOVED BY GRINDING WHEN FINAL PAVEMENT MARKINGS ARE INSTALLED.

LEGEND:

- 63rd STREET - STAGE I CONSTRUCTION
- 63rd STREET - STAGE II CONSTRUCTION
- TEMPORARY CONCRETE BARRIER
- EXISTING PAVEMENT MARKINGS
- TEMPORARY PAVEMENT MARKINGS
- (A) - 4" WHITE EDGE LINE (RIGHT)
- (B) - 4" YELLOW EDGE LINE (LEFT)
- (C) - 5" WHITE SKIP DASH LANE LINES (10' DASH, 30' SKIP)
- SIGN ON PORTABLE OR PERMANENT SUPPORT
- PLASTIC DRUMS WITH STEADY BURN LIGHTS AT 50' C-C IN TAPERS AND 100' C-C IN TANGENTS OR TYPE II BARRICADE
- IMPACT ATTENUATOR, TEMPORARY (FULLY REDIRECTIVE, NARROW) TEST LEVEL 3 (20030260)
- TRAFFIC DIRECTION
- TYPE III BARRICADE

(1) W20-1(O) 48"x48"

(2) 36"x36"

(3) 96"x48" ARROWS: W24-1(L)

(4) W24-1(L) 48"x48"

(5) 96"x48" ARROWS: W24-1(R)

(6) W24-1(R) 48"x48"

W2-115(O)-3618

R2-1-3648

R10-190P-3618

R2-1106-3618

(10) NUMBER OF ARROWS SHALL MATCH NUMBER OF LANES OPEN TO TRAFFIC

(7) W1-6L 60"x30"

(8) W1-6R 60"x30"

H:\Jobs\2014\201403022\Cad\Drawings\60\06015-shr-MOT Dan Ryan-02.dwg 5/22/2014 8:56:10 PM

	USER NAME = 0766	DESIGNED - JSO	REVISED - 5/23/2014 GRAEF	STATE OF ILLINOIS DEPARTMENT OF TRANSPORTATION	63rd STREET BRIDGE REPLACEMENT - COOK COUNTY SUGGESTED MAINTENANCE OF TRAFFIC DAN RYAN EXPWY - STAGE B	F.A.I. RTE. 94	SECTION 1920-B	COUNTY COOK	TOTAL SHEETS 142	SHEET NO. 23
	DRAWN - HJM CHECKED - TNS DATE - 03-15-2013	REVISED - REVISED - REVISED -	SCALE: 1"=60' SHEET OF SHEETS STA. TO STA.			CONTRACT NO. 60J15 ILLINOIS FED. AID PROJECT				