

STATE OF ILLINOIS
DEPARTMENT OF TRANSPORTATION
DIVISION OF HIGHWAYS

**PROPOSED
HIGHWAY PLANS**

FAI 94 I-90/94 (DAN RYAN EXPRESSWAY)
AT 63rd STREET (FAU 1519)
SECTION 1920-B
PROJECT: ACNHPP-0005(990)
BRIDGE SUPERSTRUCTURE REPLACEMENT
SN 016-1149
COOK COUNTY
C-91-190-10

F.A.I. RYE.	SECTION	COUNTY	TOTAL SHEETS	SHEET NO.
094	1920-B	COOK	142	1
		ILLINOIS	CONTRACT NO. 60J15	

D-91-190-10
*142 & 1 = 143
*143 & 1 = 144

FOR INDEX OF SHEETS, SEE SHEET NO. 2

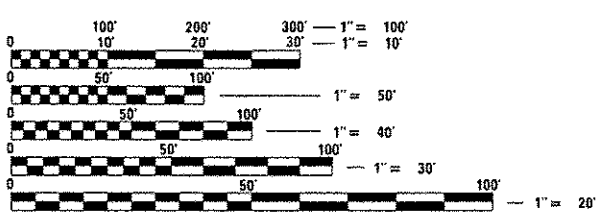
TRAFFIC DATA

63RD STREET:
EXISTING ADT = 10,600 (2011)
SPEED LIMIT = 30 MPH
DESIGN SPEED = 30 MPH

THE IMPROVEMENT IS LOCATED
WITHIN THE CITY OF CHICAGO

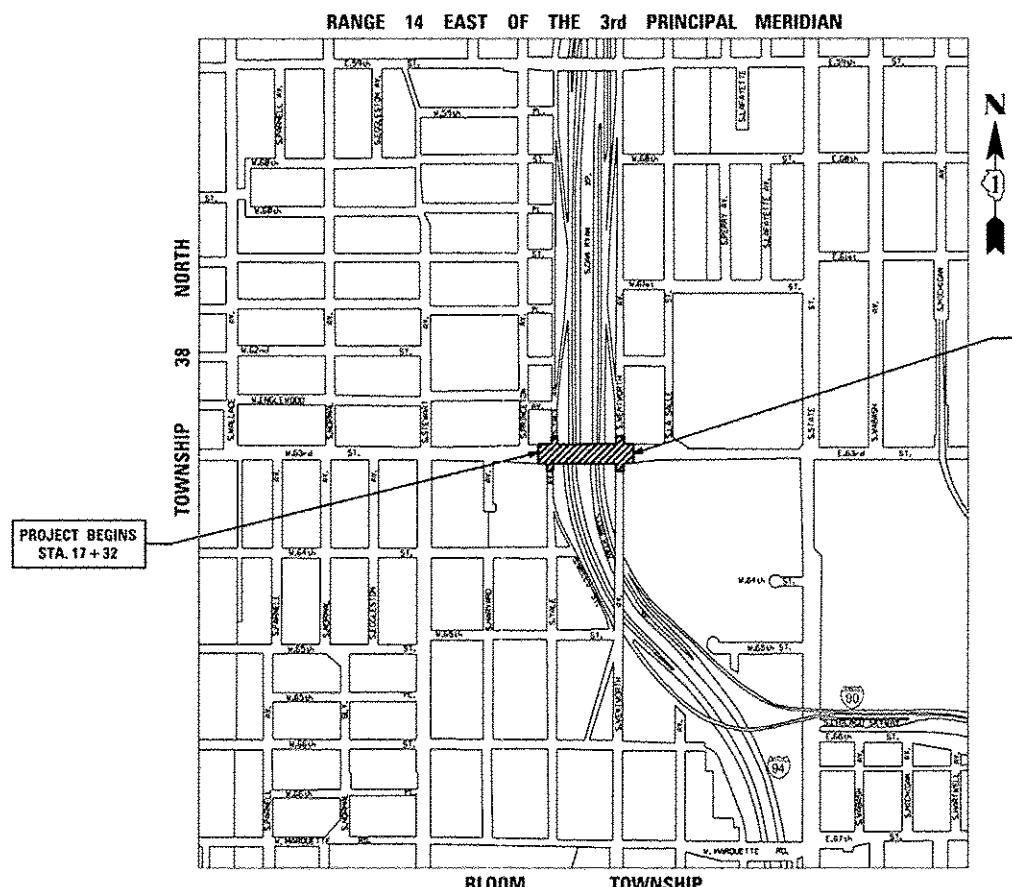


LOCATION OF SECTION INDICATED THUS: -



FULL SIZE PLANS HAVE BEEN PREPARED USING STANDARD ENGINEERING SCALES. REDUCED SIZED PLANS WILL NOT CONFORM TO STANDARD SCALES. IN MAKING MEASUREMENTS ON REDUCED PLANS, THE ABOVE SCALES MAY BE USED.

C.U.A.N.
CHICAGO UTILITY ALERT NETWORK
1-312-744-7000
J.U.L.I.E.
JOINT UTILITY LOCATION INFORMATION FOR EXCAVATION
1-800-892-0123
OR 811



PROJECT BEGINS
STA. 17+32

PROJECT ENDS
STA. 24+53

63RD STREET OVER FAI 90/94
STRUCTURE NO. 016-1149
REMOVE EXISTING 5 SPAN PPC DECK BEAM SUPERSTRUCTURE. REPAIR OR REPLACE PORTIONS OF THE SUBSTRUCTURE. REPLACE SUPERSTRUCTURE WITH A CONTINUOUS COMPOSITE STEEL BEAM SUPERSTRUCTURE.

PROJECT ENGINEER: CRAIG BAUER 847-705-4265
PROJECT MANAGER: LONG TRAN 847-705-4232

CONTRACT NO. 60J15

GROSS LENGTH = 721 FT. = 0.14 MILE
NET LENGTH = 721 FT. = 0.14 MILE



8501 W. Higgins Road, Suite 280
Chicago, Illinois 60631
(773) 399-0112

PROFESSIONAL ENGINEER'S SIGN & SEAL
Thomas N. Stevens
062-046898
REGISTERED PROFESSIONAL ENGINEER OF ILLINOIS
EXPIRES: 11-30-2015

STATE OF ILLINOIS
DEPARTMENT OF TRANSPORTATION
DIVISION OF HIGHWAYS
SUBMITTED *Mar 19 20 14*
John Fortman
DEPUTY DIRECTOR OF HIGHWAYS, REGION ENGINEER
May 9 20 14
John D. Baranzelli, PE
ENGINEER OF DESIGN AND ENVIRONMENT
May 9 20 14
Omer Osman, PE
DIRECTOR OF HIGHWAYS, CHIEF ENGINEER

PRINTED BY THE AUTHORITY
OF THE STATE OF ILLINOIS

Rev. 10-4-14

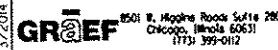
INDEX OF SHEETS

SHEET NO.	DESCRIPTION
1	COVER SHEET
2	INDEX OF SHEETS & HIGHWAY STANDARDS
3-4	GENERAL NOTES
5-12	SUMMARY OF QUANTITIES
13-14	TYPICAL SECTIONS
15	ALIGNMENT, TIES & BENCHMARKS
16	PLAN & PROFILE
17-24	SUGGESTED MAINTENANCE OF TRAFFIC AND DETOUR ROUTE
25-26	DRAINAGE & UTILITIES
27	DRAINAGE & BARRIER WALL DETAILS
28-30	SIGNAGE & PAVEMENT MARKING
31	SIGN DETAIL
32	TEMPORARY TRAFFIC SIGNAL PLAN 63rd STREET & YALE AVENUE
33	TEMPORARY CABLE PLAN 63rd STREET & YALE AVENUE
34	TEMPORARY TRAFFIC SIGNAL PLAN 63rd STREET & WENTWORTH AVENUE
35	TEMPORARY CABLE PLAN 63rd STREET & WENTWORTH AVENUE
36-37	TRAFFIC CONTROL SIGNALS
38	INTERCONNECT
39	INTERCONNECT CONTROLLER TERMINATION SCHEMATIC
40-51	TRAFFIC SIGNAL DETAILS
52	LIGHTING GENERAL NOTES, ABBREVIATIONS, INDEX OF DRAWINGS & SCHEDULE OF QUANTITIES
53	PROPOSED UNDERPASS LIGHTING
54	EXISTING UNDERPASS LIGHTING REMOVAL & TEMPORARY LIGHTING PLAN
55	CONDUIT TRANSITION DETAILS
56	CONDUIT MOUNTING DETAILS ALONG BRIDGE
57	IDOT DISTRICT ONE STANDARD LIGHTING DETAIL
58	ELECTRICAL GENERAL NOTES
59	CDOT STANDARD DETAIL DWG. 826
60	UNDERGROUND CONDUIT FACILITIES
61	STREET LIGHTING REMOVAL & INSTALLATION
62-64	CDOT STANDARD DETAILS
65-122	STRUCTURAL PLANS
123	RESTORATION
124	PAVEMENT ELEVATIONS
125-128	CURB RAMP DETAILS
129	DETAIL OF STORM SEWER CONNECTION TO EXISTING SEWER (BD07)
130	FREEWAY ENTRANCE AND EXIT RAMP CLOSURE DETAILS (TC08)
131	TRAFFIC CONTROL DETAILS FOR FREEWAY SINGLE & MULTI-LANE WEAVE (TC09)
132	TRAFFIC CONTROL AND PROTECTION FOR SIDE ROADS, INTERSECTIONS, AND DRIVEWAYS (TC10)
133-134	MULTI-LANE FREEWAY PAVEMENT MARKING DETAILS (TC12)
135	DISTRICT ONE TYPICAL PAVEMENT MARKINGS (TC13)
136	TRAFFIC CONTROL AND PROTECTION AT TURN BAYS (TO REMAIN OPEN TO TRAFFIC) (TC14)
137	PAVEMENT MARKING LETTERS AND SYMBOLS FOR TRAFFIC STAGING (TC16)
138	TRAFFIC CONTROL DETAILS FOR HIGHWAY SHOULDER CLOSURES AND PARTIAL RAMP CLOSURES (TC17)
138A	DETOUR SIGNING FOR CLOSING STATE HIGHWAYS (TC21)
138B	FREEWAY/EXPRESSWAY SIGNING FOR FLAGGING OPERATIONS AT WORK ZONE OPENINGS FOR FREEWAYS/EXPRESSWAYS (TC18)
139	ARTERIAL ROAD INFORMATION SIGN (TC22)
140-142	CITY OF CHICAGO TYPICAL PAVEMENT MARKINGS (TC24)

HIGHWAY STANDARDS

STD. NO.	TITLE
000001-06	STANDARD SYMBOLS, ABBREVIATIONS AND PATTERNS
280001-07	TEMPORARY EROSION CONTROL SYSTEMS
420001-07	PAVEMENT JOINTS
420111-03	PCC PAVEMENT ROUNDOUTS
420401-09	BRIDGE APPROACH PAVEMENT CONNECTOR
420701-02	PAVEMENT FABRIC
515001-03	NAME PLATE FOR BRIDGES
642001-02	SHOULDER RUMBLE STRIPS, 16 IN.
701400-05	APPROACH TO LANE CLOSURE, FREEWAY/EXPRESSWAY
701401-07	LANE CLOSURE, FREEWAY/EXPRESSWAY
701411-08	LANE CLOSURE, MULTILANE, AT ENTRANCE OR EXIT RAMP, FOR SPEEDS >= 45 MPH
701427-01	URBAN LANE CLOSURE, MULTILANE, INTERMITTENT OR MOVING OPER., FOR SPEEDS <= 40 MPH
701428	TRAFFIC CONTROL SETUP AND REMOVAL FREEWAY/EXPRESSWAY
701446-04	TWO LANE CLOSURE, FREEWAY/EXPRESSWAY
701601-07	URBAN LANE CLOSURE, MULTILANE, 1W OR 2W WITH NONTRAVERSABLE MEDIAN
701602-05	URBAN LANE CLOSURE, MULTILANE, 2W WITH BIDIRECTIONAL LEFT TURN LANE
701606-08	URBAN LANE CLOSURE, MULTILANE, 2W WITH MOUNTABLE MEDIAN
701701-08	URBAN LANE CLOSURE, MULTILANE INTERSECTION
701801-05	SIDEWALK, CORNER OR CROSSWALK CLOSURE
701901-02	TRAFFIC CONTROL DEVICES
704001-07	TEMPORARY CONCRETE BARRIER
720001-01	SIGN PANEL MOUNTING DETAILS
720006-03	SIGN PANEL ERECTION DETAILS
728001-01	TELESCOPING STEEL SIGN SUPPORT
729001-01	APPLICATIONS OF TYPES A & B METAL POSTS (FOR SIGNS & MARKERS)
857001-01	STANDARD PHASE DESIGNATION DIAGRAMS AND PHASE SEQUENCES

H:\JBS\2014\20140222\CAD\Site\pdp\60\1600\15-581-Index.dgn
 5/23/2014 1:52:36 PM



USER NAME = 0766	DESIGNED - JSO	REVISED - 5/23/2014 GRAEF
PLOT SCALE = 100.0000 / 1"=100'	DRAWN - HJM	REVISED -
PLOT DATE = 5/23/2014	CHECKED - TNS	REVISED -
	DATE - 03-15-2013	REVISED -

**STATE OF ILLINOIS
DEPARTMENT OF TRANSPORTATION**

63rd STREET BRIDGE REPLACEMENT -- COOK COUNTY	
INDEX OF SHEETS AND HIGHWAY STANDARDS	
SCALE: 1"=50'	SHEET 1 OF 1 SHEETS STA. TO STA.

F.A.I. RTE.	SECTION	COUNTY	TOTAL SHEETS	SHEET NO.
94	1920-B	COOK	142	2
CONTRACT NO. 60J15				
ILLINOIS FED. AID PROJECT				

GENERAL NOTES

1. BEFORE STARTING ANY EXCAVATION, THE CONTRACTOR AND ALL OTHER PARTIES INVOLVED IN THE CONSTRUCTION OPERATIONS WITHIN THE PROJECT LIMITS SHALL CALL CUAN (CHICAGO UTILITY ALERT NETWORK) AT (312) 744-7000 FOR FIELD LOCATIONS OF BURIED ELECTRIC, TELEPHONE, GAS AND OTHER EXISTING FACILITIES. (72 HOUR NOTIFICATION IS REQUIRED). THE CONTRACTOR SHALL COOPERATE WITH ALL UTILITY OWNERS AS PROVIDED FOR IN THE STANDARD SPECIFICATIONS.
2. 10 FOOT TRANSITIONS SHALL BE USED TO MATCH THE PROPOSED CURB & GUTTER TO THE EXISTING, UNLESS OTHERWISE SHOWN. THE TRANSITIONS SHALL BE PAID FOR AT THE CONTRACT UNIT PRICE FOR THE PROPOSED ITEMS OF WORK SPECIFIED.
3. THE CONTRACTOR SHALL COORDINATE CONSTRUCTION ACTIVITIES WITH UTILITY COMPANIES AND THE CITY OF CHICAGO.
4. ALL ELEVATIONS REFER TO THE NORTH AMERICAN VERTICAL OF DATUM OF 1988 (NAVD 88).
5. THE CONTRACTOR WILL NOT BE ALLOWED TO SET UP A YARD OR FIELD OFFICE ON STATE PROPERTY WITHOUT WRITTEN PERMISSION FROM THE DEPARTMENT.
6. THE CONTRACTOR SHALL CONTACT THE TRAFFIC CONTROL SUPERVISOR AT (847) 705-4470 A MINIMUM OF 72 HOURS PRIOR TO BEGINNING WORK.
7. THE RESIDENT ENGINEER SHALL CONTACT THE AREA TRAFFIC FIELD ENGINEER AT (847) 705-4153 AT LEAST TWO (2) WEEKS PRIOR TO THE PLACEMENT OF PERMANENT PAVEMENT MARKINGS, AND SHALL CONTACT THE IDOT EXPRESSWAY TRAFFIC CONTROL SUPERVISOR AT (847) 705-4155 72 HOURS PRIOR TO THE PLACEMENT OF ANY TEMPORARY TRAFFIC CONTROL DEVICES WITH IDOT JURISDICTION.
8. ALL 63RD ST., WELLS ST., YALE AV. AND WENTWORTH AV. PAVEMENT MARKINGS SHALL BE PLACED THROUGHOUT THE PROJECT ACCORDING TO CITY OF CHICAGO TYPICAL PAVEMENT MARKINGS AND SHALL MATCH EXISTING PAVEMENT MARKINGS AT PROJECT LIMITS. 190/194 PAVEMENT MARKINGS SHALL CONFORM TO IDOT DISTRICT ONE STANDARDS AND SHALL MATCH THE EXISTING MARKINGS AND LOCATIONS DISTURBED DURING CONSTRUCTION.
9. WHEN ARTIFICIAL LIGHTING IS USED IN NIGHT OPERATIONS THE CONTRACTOR SHALL EXERCISE THE UTMOST PRECAUTIONS IN PREVENTING ADVERSE VISIBILITY TO THE MOTORING PUBLIC AND ADJOINING RESIDENTIAL AREAS.
10. DURING CONSTRUCTION, AGGREGATE FOR TEMPORARY ACCESS WILL ALSO BE USED TO PROVIDE TEMPORARY RAMPS AT INTERSECTIONS, BUILDING ENTRANCES, AND AS DETERMINED BY THE ENGINEER FOR PEDESTRIAN MOVEMENT.
11. TEMPORARY PAVEMENT MARKING (PAINT) SHALL BE REQUIRED ON ALL TEMPORARY PAVEMENT SURFACES OVER THE WINTER MONTHS EXCEPT ON THE DAN RYAN EXPRESSWAY. PAINT USED OVER THE WINTER MONTHS IN THE TRANSITION AREAS ON EXISTING SURFACES SHALL BE REMOVED BY GRINDING WHEN THE FINAL PAVEMENT MARKINGS ARE INSTALLED. ON EXPRESSWAYS, EPOXY MARKINGS SHALL BE REQUIRED ON ALL TEMPORARY PAVEMENT SURFACES OVER THE WINTER MONTHS. EPOXY USED OVER THE WINTER IN TRANSITION AREAS AT THE LIMITS OF CONSTRUCTION ON EXISTING SURFACES SHALL BE REMOVED BY GRINDING WHEN FINAL PAVEMENT MARKINGS ARE INSTALLED.
12. ABANDONED UNDERGROUND UTILITIES THAT CONFLICT WITH CONSTRUCTION SHALL BE DISPOSED OF OUTSIDE OF THE LIMITS OF THE RIGHT OF WAY ACCORDING TO ARTICLE 202.03 OF THE STANDARD SPECIFICATIONS AND AS DIRECTED BY THE ENGINEER. THIS WORK WILL NOT BE PAID FOR SEPARATELY, BUT SHALL BE INCLUDED IN THE COST OF EARTH EXCAVATION.
13. ANY REFERENCE TO A STANDARD IN THESE PLANS SHALL BE INTERPRETED TO MEAN THE EDITION AS INDICATED BY THE SUBNUMBER AS SHOWN ON THE LIST OF STANDARDS OR THE COPY INCLUDED IN THESE PLANS.
14. ALL DAMAGE TO DEPARTMENT OWNED UNDERGROUND FACILITIES CAUSED BY THE CONTRACTOR SHALL BE REPAIRED TO THE SATISFACTION OF THE DEPARTMENT AT THE CONTRACTOR'S EXPENSE. THIS SHALL INCLUDE ALL TEMPORARY REPAIRS REQUIRED TO KEEP THE FACILITY OPERATIONAL WHILE MATERIAL IS BEING OBTAINED TO MAKE PERMANENT REPAIRS. SPLICING OF ELECTRICAL CALBE SHALL NOT BE ALLOWED. ELECTRICAL CALBE SHALL BE REPLACED FROM POLE TO POLE OR CONTROLLER.
15. THE WORK REQUIRED TO CONNECT ANY SEWER TO AN EXISTING DRAINAGE STRUCTURE OR PIPE WILL NOT BE PAID FOR SEPARATELY, BUT SHALL BE CONSIDERED AS INCLUDED IN THE CONTRACT UNIT PRICE BID FOR THE SEWER ITEMS.
16. THE CONTRACTOR SHALL BE REQUIRED TO PROVIDE ACCESS TO ABUTTING PROPERTY AT ALL TIMES DURING THE CONSTRUCTION OF THIS PROJECT.
17. FOR WORK OUTSIDE THE LIMITS OF THE BRIDGE APPROACH SLAB, ALL REFERENCES IN THE HIGHWAY STANDARDS AND STANDARD SPECIFICATIONS FOR REINFORCEMENT, DOWEL BARS AND TIE BARS IN PAVEMENT, SHOULDERS, CURB, GUTTER, COMBINATION CURB AND GUTTER, MEDIAN AND CHAIR SUPPORTS FOR CRC PAVEMENT SHALL BE EPOXY COATED, UNLESS NOTED ON THE PLANS.


18. WHEN TEMPORARY CONCRETE BARRIER WALL IS USED ON THE CONTRACT, A 3.5 FOOT CLEAR DEFLECTION ZONE SHALL BE PROVIDED FOR FROM THE BACK OF THE BARRIER WALL TO ANY OBSTRUCTION OR DROP OFF. IF THIS 3.5 FOOT CLEAR ZONE CANNOT BE MAINTAINED, THE TEMPORARY CONCRETE BARRIER WALL SHALL BE ANCHORED TO THE PAVEMENT THRU THE 3 ANCHORING HOLES ON THE TRAFFIC SIDE OF THE WALL. PAYMENT FOR THE ANCHORING SHALL NOT BE PAID FOR SEPARATELY, BUT SHALL BE INCLUDED IN THE COST OF THE TEMPORARY CONCRETE BARRIER WALL PAY ITEMS.

GENERAL NOTES - CITY OF CHICAGO

1. ANY REFERENCE TO "STANDARD SPECIFICATIONS" THROUGHOUT THE PLANS OR SPECIAL PROVISIONS SHALL BE INTERPRETED TO BE THE ILLINOIS DEPARTMENT OF TRANSPORTATION (IDOT) STANDARD SPECIFICATIONS FOR ROAD AND BRIDGE CONSTRUCTION (SSRBC) AND THE IDOT SUPPLEMENTAL SPECIFICATIONS, ADOPTED JANUARY 1, 2012 (OR LATEST EDITION).
2. ALL ADA RAMP CONSTRUCTION SHALL BE IN ACCORDANCE WITH THE LATEST VERSION OF THE "CHICAGO DEPARTMENT OF TRANSPORTATION ADA CONSTRUCTION STANDARDS" AVAILABLE ON THE CITY'S INTERNET WEBSITE.
3. ALL DIMENSIONS SHOWN ON THE PLANS ARE TO THE EDGE OF PAVEMENT, UNLESS OTHERWISE NOTED.
4. THE INFORMATION SHOWN ON THIS PLAN SET CONCERNING THE TYPE AND LOCATION OF PRIVATE AND PUBLIC UNDERGROUND UTILITIES IS NOT GUARANTEED TO BE ACCURATE OR ALL-INCLUSIVE. THE CONTRACTOR IS RESPONSIBLE FOR MAKING HIS OWN INVESTIGATION TO DETERMINE THE EXISTENCE, NATURE AND EXACT LOCATION OF ALL UNDERGROUND UTILITIES AND APPURTENANCES WITHIN THE LIMITS OF THE IMPROVEMENT. THE COST OF THIS WORK SHALL BE CONSIDERED INCIDENTAL TO THE CONTRACT.
5. THE CONTRACTOR MUST PROTECT EXISTING AND NEW UTILITIES WHEN CONSIDERED NECESSARY BY THE COMMISSIONER, BY METHODS APPROVED BY THE COMMISSIONER, AND HE MUST BRACE AND SUPPORT THE UTILITIES PROPERLY TO PREVENT SETTLEMENT, DISPLACEMENT OR CHANGE TO THE UTILITIES. THE PROTECTION OF THE UTILITIES AS SPECIFIED HEREIN WILL NOT BE PAID FOR SEPARATELY, BUT THE COST THEREOF SHALL BE CONSIDERED INCIDENTAL TO THE CONTRACT.
6. THE CONTRACTOR SHALL BE RESPONSIBLE FOR THE PROTECTION OF ALL UNDERGROUND UTILITIES AND THEIR APPURTENANCES EVEN THOUGH THEY MAY NOT BE SHOWN ON THE PLANS. ANY UTILITY THAT IS DAMAGED DURING THE CONSTRUCTION SHALL BE REPAIRED OR REPLACED AT THE CONTRACTOR'S EXPENSE. ONLY PERSONNEL AUTHORIZED BY THE COMMISSIONER SHALL PERFORM THIS WORK.
7. THE CONTRACTOR SHALL MAINTAIN THE SURFACE DRAINAGE OF THE ROAD DURING CONSTRUCTION OF THIS PROJECT.
8. AGGREGATE FURNISHED AND PLACED UNDER THE ITEM AGGREGATE FOR TEMPORARY ACCESS SHALL, AS FAR AS POSSIBLE, BE RE-USED AT LOCATIONS AS DIRECTED BY THE COMMISSIONER.
9. UTILITY ADJUSTMENT AND RELOCATION SHALL BE THE RESPONSIBILITY OF THE OWNERS EXCEPT AS NOTED ON THE PLANS, GENERAL NOTES OR SPECIFICATIONS.
10. SAWING OF EXISTING CONCRETE DRIVEWAY, ALLEY PAVEMENT, CURB, CURB & GUTTER OR SIDEWALKS WHEN REQUIRED FOR REMOVAL OR CONSTRUCTION WILL NOT BE PAID FOR SEPARATELY, BUT SHALL BE CONSIDERED INCIDENTAL TO THE VARIOUS PAY ITEMS FOR THE REMOVAL OF SUCH CONSTRUCTION.
11. ANY DEWATERING AND/OR SHEETING AND SHORING AND/OR OTHER APPROVED CONSTRUCTION METHODS REQUIRED TO INSTALL SEWER BID ITEMS AS PLANNED AND UNDER THE CONDITIONS NECESSARY TO DO THIS WORK AS SPECIFIED, WILL NOT BE PAID FOR SEPARATELY BUT SHALL BE CONSIDERED INCIDENTAL TO THE UNIT PRICE OF THE ITEM TO BE CONSTRUCTED.
12. WHEN SAND IS THE EXCESS MATERIAL EXCAVATED WITHIN THE LIMITS OF THIS IMPROVEMENT, IT SHALL BE USED FOR TRENCH BACKFILL WHEN SO DIRECTED BY THE COMMISSIONER. THE COST OF MOVING AND PLACING IT SHALL BE INCIDENTAL TO THE CONTRACT UNIT PRICE FOR THE VARIOUS SEWER ITEMS OF THE CONTRACT. THE CONTRACTOR SHALL IMMEDIATELY REMOVE MATERIAL REJECTED WHEN SO ORDERED BY THE COMMISSIONER.
13. THE CITY OF CHICAGO IS TO MAKE ADJUSTMENTS TO ITS OFFICE OF EMERGENCY MANAGEMENT & COMMUNICATION FACILITIES. THE CONTRACTOR SHALL COORDINATE HIS WORK AND COOPERATE WITH THE CITY OF CHICAGO IN THESE ADJUSTMENTS. THIS COORDINATION AND COOPERATION BY THE CONTRACTOR WILL NOT BE PAID FOR SEPERATELY BUT SHALL BE CONSIDERED INCLUDED IN THE COSTS OF THE CONTRACT.

14. ALL DRAINAGE STRUCTURES MUST BE KEPT OPERATIONAL FOR THE DURATION OF THE PROJECT. PROPOSED STRUCTURES WILL NOT BE APPROVED UNLESS THEY ARE CLEAN. PRIOR TO START OF CONSTRUCTION, AN INSPECTION OF EXISTING MANHOLES, CATCH BASINS AND INLETS THAT ARE TO REMAIN WILL BE PERFORMED BY THE CITY AND CONTRACTOR. AT THAT TIME, THE CITY WILL DETERMINE WHICH STRUCTURES MUST BE CLEANED AS PER CONTRACT PAY ITEM(S). ANY AND ALL STRUCTURES REQUIRING CLEANING AT ANY OTHER TIME DUE TO CONSTRUCTION DEBRIS MUST BE CLEANED BY THE CONTRACTOR AND WILL BE CONSIDERED INCIDENTAL TO THE CONTRACT.
15. IF IT IS DETERMINED IN THE FIELD THAT ANY EXISTING CATCH BASIN OR MANHOLE TO BE ADJUSTED, AS SPECIFIED IN THE PLANS, IS IN POOR CONDITIONS AND REQUIRES RECONSTRUCTION, THE CONTRACTOR MUST THEN PERFORM THE RECONSTRUCTION IN ACCORDANCE WITH SECTION 602 OF THE STANDARD SPECIFICATIONS.
16. WITHIN THE LIMITS OF THE PROJECT, THERE MAY BE MANHOLES AND CATCH BASINS SHOWN ON THE DEPARTMENT OF WATER MANAGEMENT SEWER ATLASES THAT HAVE NOT BEEN LOCATED IN THE FIELD DUE TO THEIR BEING REMOVED, BURIED, ETC. IF DURING THE COURSE OF THE PROJECT, ANY SUCH STRUCTURE IS ENCOUNTERED DURING EXCAVATION, MANHOLES SHALL BE ADJUSTED, CATCH BASINS SHALL BE FILLED, AND THE OUTLET PIPE(S) SHALL BE PLUGGED. AN ESTIMATED QUANTITY HAS BEEN INCLUDED IN THE SUMMARY OF QUANTITIES.
17. PROPOSED P.C. CONCRETE BASE COURSE OR P.C. CONCRETE PAVEMENT SHALL NOT BE OPENED TO VEHICULAR OR CONSTRUCTION TRAFFIC UNTIL AFTER THE SPECIFIED CURING PERIOD AS DEFINED IN SECTION 1020.13 OF THE SSRBC AND UNTIL THE JOINTS HAVE BEEN SEALED.
18. THE TRENCH BACKFILL QUANTITY SHOWN IN THE PLANS HAS BEEN CALCULATED ACCORDING TO THE STATE OF ILLINOIS TRENCH BACKFILL TABLE AND ALSO AS SPECIFIED IN ARTICLES 208.03 AND 550.07 OF THE SSRBC. AS STATED IN ARTICLE 550.07 OF THE STANDARD SPECIFICATIONS, NO ALLOWANCE HAS BEEN MADE IN THIS VOLUME FOR SLOPED OR BENCHED WALLS. THE VOLUME OF TRENCH BACKFILL SHOWN IN THE PLANS WILL BE THE BASIS OF THE MAXIMUM PAYMENT TO THE CONTRACTOR, WHERE SAND EXCAVATED FROM THE SITE IS USED AS SPECIFIED HEREIN, THESE VOLUMES WILL BE REDUCED AS DETERMINED BY THE FIELD MEASUREMENTS AND VOLUME CALCULATIONS OF THE COMMISSIONER.
19. THE CONTRACTOR SHALL MAINTAIN ACCESS TO PRIVATE PROPERTIES DURING THE CONSTRUCTION OPERATIONS. ADJACENT BUSINESS PROPERTY OWNERS SHALL BE NOTIFIED 72 HOURS IN ADVANCE OF CONSTRUCTION OPERATIONS WHICH MAY AFFECT THEIR DAILY SCHEDULE. THE CONTRACTOR SHALL COORDINATE WORK THROUGH THE RESIDENT ENGINEER TO AVOID ANY UNDUE INCONVENIENCE TO LOCAL BUSINESSES.
20. THE CONTRACTOR MUST TAKE ALL NECESSARY SAFETY PRECAUTIONS TO PROTECT ABUTTING PROPERTY, UTILITIES, PARKING FACILITIES, BUS SHELTERS, PEDESTRIANS AND VEHICULAR TRAFFIC AT ALL TIMES.
21. ALL CATCH BASINS IN THE CITY OF CHICAGO MUST MEET THE DEPARTMENT OF WATER MANAGEMENT STANDARDS.
22. PERMITS FROM THE DEPARTMENT OF WATER MANAGEMENT ARE REQUIRED FOR ALL UNDERGROUND STORM OF SEWER STRUCTURES, THE D.W.M. PERMIT MUST BE OBTAINED BY A LICENSED SEWER DRAIN LAYER PRIOR TO THE START OF CONSTRUCTION. THE LICENSED SEWER CONTRACTOR SUBCONTRACTOR MUST SUBMIT TWO SETS OF PLANS APPROVED BY THE DEPARTMENT FOR THE ISSUE OF THE SEWER PERMIT TO SUITE 410, 333 SOUTH STATE STREET, CHICAGO, ILLINOIS 60604-3971. INSPECTION WILL BE PROVIDED BY THE DEPARTMENT. IN CASE OF DAMAGE TO THE CITY OF CHICAGO SEWERS, PRIVATE AND PUBLIC DRAINS, SEWER STRUCTURES AND/OR BENCH MONUMENTS, THE CONTRACTOR SHALL IMMEDIATELY CONTACT THE DEPARTMENT AT (312) 747-7852 OR (312) 747-7893.
23. BENCH MARK LOCATIONS SHALL BE THE RESPONSIBILITY OF THE CONTRACTOR WITHIN THE LIMITS OF THE IMPROVEMENT CAN BE OBTAINED FROM THE DEPARTMENT OF WATER MANAGEMENT AT SUITE 410, 333 SOUTH STATE STREET, CHICAGO, ILLINOIS 60604-3971. THE CONTRACTOR IS RESPONSIBLE FOR THE COST OF REPLACING ANY BENCH MONUMENT DAMAGED OR DESTROYED DURING CONSTRUCTION.
24. SIDEWALK ACCESSIBILITY RAMPS SHALL NOT BE CONSTRUCTED DIRECTLY OVER EXISTING OR PROPOSED DRAINAGE STRUCTURES.
25. ALL BROKEN, CRACKED, WORN OR OTHERWISE DAMAGED OR BICYCLE UNSAFE FRAMES AND GRATES OR LIDS ON SEWER STRUCTURES SHALL BE REPLACED WITH NEW DEPARTMENT OF WATER MANAGEMENT STANDARD FRAMES AND GRATES OR LIDS, OLD FRAMES AND GRATES OR LIDS SHALL BE DELIVERED TO THE DEPARTMENT OF WATER MANAGEMENT AT 39TH ST. AND ASHLAND AVENUE.
26. CITY OF CHICAGO WATER VALVE VAULTS AND SEWER STRUCTURES SHALL NOT BE CLOSED, COVERED OR OTHERWISE OBSTRUCTED DURING CONSTRUCTION WITHOUT WRITTEN PERMISSION FROM THE CITY OF CHICAGO DEPARTMENT OF WATER MANAGEMENT.
27. CURB AND GUTTER CONSTRUCTION SHALL PROVIDE A MINIMUM CURB HEIGHT OF 3 INCHES.
28. PAVEMENT REPLACEMENT AROUND FRAMES AND GRATES OR LIDS WHERE DRAINAGE, WATER MAIN OR ELECTRIC STRUCTURES ARE ADJUSTED OR RECONSTRUCTED, SHALL BE WITH CLASS SI CONCRETE.

H:\Jobs\2014\20140222\CAD\312e\gdm\00\016\045-shr-gem\mofe01.dgn 5/22/2014 3:52:56 PM

 8501 E. Higgins Road Suite 280 Chicago, Illinois 60631 (773) 399-0112	USER NAME - 0706	DESIGNED - JSO	REVISED - 5/23/2014 GRAEF	STATE OF ILLINOIS DEPARTMENT OF TRANSPORTATION	63rd STREET BRIDGE REPLACEMENT - COOK COUNTY				F.A.I. R.T.E. - 94	SECTION - 1920-B	COUNTY - COOK	TOTAL SHEETS - 142	SHEET NO. - 3
	PLOT SCALE - 1/8"=1'-0" PLOT DATE - 5/22/2014	DRAWN - HJM	CHECKED - TNS		REVISED -	SCALE: 1"=50'	SHEET 1	OF 2 SHEETS	STA. TO STA.	ILLINOIS FED. AID PROJECT CONTRACT NO. 60J15			

90% FED.
10% STATE
URBAN

CODE NO.	PAY ITEM DESCRIPTION	UNIT	TOTAL QUANTITY	ROADWAY 0004	BRIDGE 0004	LIGHTING 0021	TRAFFIC SIGNALS 0021		
							63RD ST/ YALE AVE	63RD ST/ WENTWORTH AVE	INTER-CONNECT
X2011000	TEMPORARY FENCE (SPECIAL)	FOOT	453		453				
X4060110	BITUMINOUS MATERIALS (PRIME COAT)	POUND	97	97					
X5860110	GRANULAR BACKFILL FOR STRUCTURES	CU YD	92		92				
X6020083	INLETS, TYPE A, TYPE 1 FRAME, OPEN LID (CITY OF CHICAGO)	EACH	1	1					
X6022505	CATCH BASINS, TYPE A, 4'-DIAMETER, TYPE 1 FRAME, OPEN LID (CITY OF CHICAGO)	EACH	4	4					
X7010216	TRAFFIC CONTROL AND PROTECTION (SPECIAL)	L SUM	1	1					
X7011015	TRAFFIC CONTROL AND PROTECTION (EXPRESSWAYS)	L SUM	1	1					
X7013820	TRAFFIC CONTROL SURVEILLANCE, EXPRESSWAYS	CAL DA	235	235					
Z0004552	APPROACH SLAB REMOVAL	SO YD	738	738					
Z0012754	STRUCTURAL REPAIR OF CONCRETE (DEPTH EQUAL TO OR LESS THAN 5 INCHES)	SO FT	797		797				
Z0013798	CONSTRUCTION LAYOUT	L SUM	1	1					
Z0018004	DRAINAGE SCUPPERS, DS-12	EACH	4		4				
Z0018800	DRAINAGE SYSTEM	L SUM	1		1				
Z0026407	TEMPORARY SHEET PILING	SO FT	327		327				
Z0048665	RAILROAD PROTECTIVE LIABILITY INSURANCE	L SUM	1	1					
Z0073100	TEMPORARY SHORING	EACH	4		4				
X0370135	CONCRETE CURB, TYPE B SPECIAL (CDOT)	FOOT	101	101					
X0370080	COMBINATION CURB AND GUTTER TYPE B V.12 (CDOT)	FOOT	400	400					
31101060	SUBBASE GRANULAR MATERIAL, TYPE B 24"	SO YD	43	43					
X0327617	MODIFY CONCRETE BARRIER AND RETAINING WALL	L SUM	1	1					
X0370081	SAND CUSHION, 4" (CDOT)	SO FT	2,538	2,538					
X0327618	LANDSCAPING, SPECIAL	L SUM	1	1					
X0370082	STORM SEWER, TYPE 2, 8 INCH, EXTRA STRENGTH VITRIFIED CLAY PIPE (CDOT)	FOOT	98	98					
X0370083	STORM SEWER, TYPE 2, 8 INCH, DUCTILE IRON PIPE (CDOT)	FOOT	113	113					
X 81100320	CONDUIT ATTACHED TO STRUCTURE, 1" DIA., PVC COATED GALVANIZED STEEL	FOOT	518			518			
X 80370122	CONDUIT ATTACHED TO STRUCTURE, 2" DIA., GALVANIZED STEEL (CDOT)	FOOT	634			634			

△

*specialty items

△ Rev. 6-4-14

Rev.

H:\pds\2014\20140222\CAD\Site\drn\00\0160J5-Summer-y.dgn
 3/31/2014 10:43:18 AM

GR&EF
 1501 W. Higgins Road Suite 200
 Chicago, Illinois 60631
 (773) 399-0122

USER NAME = D766	DESIGNED - JSO	REVISION -
PLOT SCALE = 100.0000' / 1"	DRAWN - HJM	REVISION -
PLOT DATE = 3/31/2014	CHECKED - TNS	REVISION -
	DATE - 03-15-2013	REVISION -

STATE OF ILLINOIS
DEPARTMENT OF TRANSPORTATION

63rd STREET BRIDGE REPLACEMENT - COOK COUNTY
SUMMARY OF QUANTITIES

SCALE: NTS=60' SHEET 5 OF 8 SHEETS STA. TO STA.

F.A.I. RTE. 94	SECTION 1920-B	COUNTY COOK	TOTAL SHEETS 142	SHEET NO. 9
ILLINOIS FED. AID PROJECT			CONTRACT NO. 60J15	

90% FED.
10% STATE

TRAFFIC SIGNALS 0021	63RD ST/ YALE AVE	63RD ST/ WENTWORTH AVE	INTER-CONNECT	LIGHTING 0021	BRIDGE 00M	ROADWAY 0004	TOTAL QUANTITY	UNIT	PAY ITEM DESCRIPTION	CODE NO.	LIRBAN
				140			140	FOOT	CONDUIT ATTACHED TO STRUCTURE, 2" DIA., PVC COATED GALVANIZED STEEL	* 81100605	
					320		3,330	FOOT	CONDUIT ATTACHED TO STRUCTURE, 3" DIA., GALVANIZED STEEL (CDOT)	* X0370124	
				952			952	FOOT	CONDUIT ATTACHED TO STRUCTURE, 3" DIA., PVC COATED GALVANIZED STEEL	* 81100805	
				102			102	FOOT	UNIT DUCT, 600 V, 3-1/C NO. 2, 1/C NO. 4 GROUND, (XLP-TYPE USE), 1 1/4" DIA. POLYETHYLENE	* 81603081	
					720		720	FOOT	CONDUIT ATTACHED TO STRUCTURE, 4" DIA., GALVANIZED STEEL (CDOT)	* X0370203	
				2,786			2,786	FOOT	ELECTRIC CABLE IN CONDUIT, 600V (XLP-TYPE USE) 1/C NO. 10	* 81702110	
				932			932	FOOT	ELECTRIC CABLE IN CONDUIT, 600V (XLP-TYPE USE) 1/C NO. 4	* 81702140	
				2,500	290		2,790	FOOT	ELECTRIC CABLE IN CONDUIT, 600V (XLP-TYPE USE) 1/C NO. 2	* 81702150	
				1	870		870	FOOT	ELECTRIC CABLE IN CONDUIT, 600V (XLP-TYPE USE) 1/C NO. 4/0	* 81702190	
				1			1	L SUM	REMOVE EXISTING STREET LIGHTING EQUIPMENT (CDOT)	* X0370140	
				1	2320		2320	FOOT	ELECTRIC CABLE IN CONDUIT, 600V (XLP-TYPE USE) 1/C 500 MCM	* 81702230	
				1			1	EACH	RACK, SECONDARY-AERIAL, 2-WIRE (CDOT)	* X0370120	
				2,083	320		2,403	FOOT	REMOVE CONDUIT ATTACHED TO STRUCTURE	* X0323710	
				1			1	L SUM	MAINTENANCE OF STREET LIGHTING SYSTEM (CDOT)	* X0370132	
				2,692			2,692	FOOT	ELECTRIC CABLE IN CONDUIT, TRIPLEX, 2-1/C NO. 6 AND 1-1/C NO. 8 GROUND (CDOT)	* X0370003	
				1			1	EACH	PAINT EXISTING STREET LIGHT/TRAFFIC EQUIPMENT COMPLETE (CDOT)	* X0370133	
					1		2	EACH	JUNCTION BOX, POLE OR POST MOUNTED (CDOT)	* X0370134	
				30			30	EACH	REMOVE EXISTING JUNCTION BOX	* X8130125	
				1			1	L SUM	PROTECTION AND MAINTENANCE OF EXISTING UNDERPASS LIGHTING	* X8210305	
							197	FOOT	ELECTRIC CABLE IN CONDUIT, COAXIAL VIDEO, RG-59/U (CDOT)	* X0370138	
				6			6	CAL MO	MAINTENANCE OF LIGHTING SYSTEM	* Z0033020	
							28	EACH	DRILL MANHOLE OR HANDHOLE (CDOT)	* X0370084	
							8	EACH	CLEAN MANHOLE OR HANDHOLE (CDOT)	* X0370085	
							456	FOOT	ROD AND CLEAN DUCT IN EXISTING CONDUIT SYSTEM (CDOT)	* X0370076	
							6	EACH	BREAKDOWN STREET LIGHT FOUNDATION (CDOT)	* X0370002	
							316	FOOT	TRENCH AND BACKFILL WITH SCREENINGS (CDOT)	* X0370001	
							1	EACH	CONCRETE FOUNDATION, 30" DIAMETER, 1 1/4" ANCHOR RODS, 17 1/4" BOLT CIRCLE, 9 FEET (CDOT)	* X0370086	

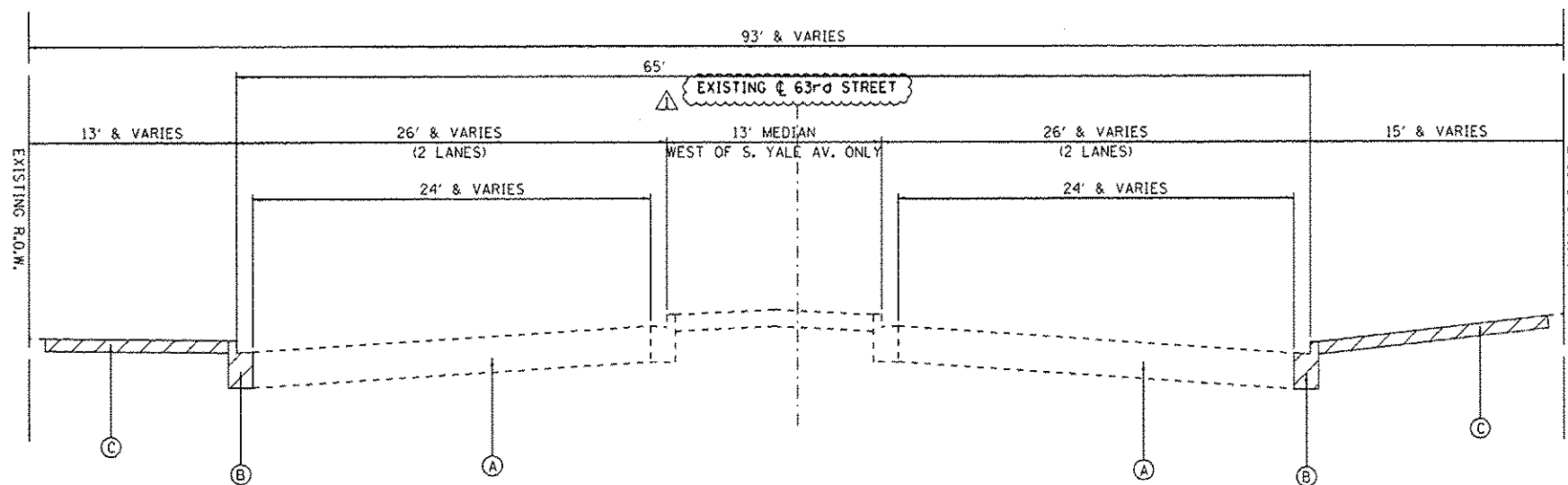
© 100% STATE (NP) * Specialty Items

Rev. 6-4-14

Rev.

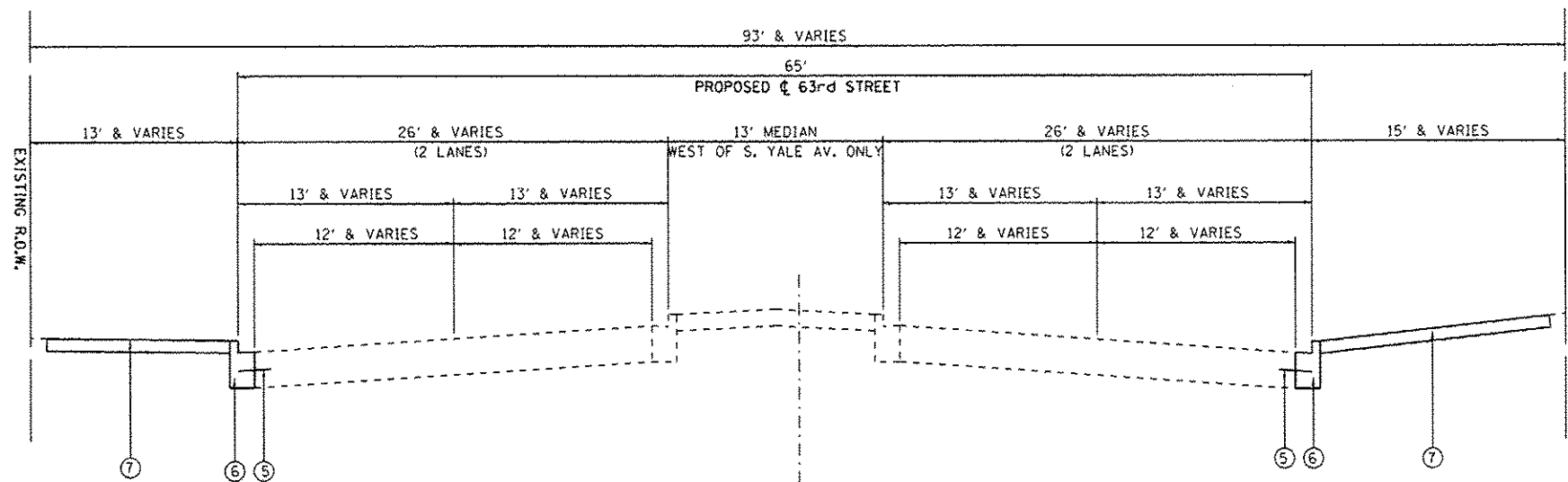
I:\projects\2014\20140222\CAD\1511re\vdgn\00\0160015-Summary.y.dgn 3/2/2014 3:24:15 AM

	USER NAME = 0766	DESIGNED - JSO	REVISED -	STATE OF ILLINOIS DEPARTMENT OF TRANSPORTATION	63rd STREET BRIDGE REPLACEMENT - COOK COUNTY SUMMARY OF QUANTITIES	F.A.I. RTE. 94	SECTION 1920-B	COUNTY COOK	TOTAL SHEETS 142	SHEET NO. 10
	PLOT SCALE = 100.0000' / 1"	CHECKED - TNS	REVISED -			SCALE: NTPS'	SHEET 6 OF 8 SHEETS STA. TO STA.	CONTRACT NO. 60J15		ILLINOIS FED. AID PROJECT
PLOT DATE = 3/31/2014	DATE = 03-15-2013	REVISED -								



EXISTING TYPICAL SECTION
(LOOKING EAST)
STA. 19+00 to STA. 19+19 AND
STA. 23+92 to STA. 24+53

NOTE: THE EXISTING AND PROPOSED 63RD ST. CENTERLINES ARE IN THE SAME LOCATION



PROPOSED TYPICAL SECTION
(LOOKING EAST)
STA. 19+00 to STA. 19+19 AND
STA. 23+92 to STA. 24+53

EXISTING CONDITIONS:

- (A) P.C.C. PAVEMENT
- (B) COMBINATION CONCRETE CURB AND GUTTER
- (C) P.C.C. SIDEWALK (5") & 8" (AT ADA RAMP)

ITEM TO BE REMOVED

PROPOSED CONDITIONS:

- (1) P.C.C. PAVEMENT 10" (JOINTED)
- (2) AGGREGATE SUBGRADE IMPROVEMENT 12"
- (3) LONGITUDINAL CONSTRUCTION JOINT WITH NO. 6x24 EPOXY COATED TIE BARS AT 24" CENTERS
- (4) LONGITUDINAL SAWED JOINT WITH NO. 6x30 EPOXY COATED TIE BARS AT 30" CENTERS
- (5) NO. 5x30 EPOXY COATED ROUND TIE BARS AT 30" CENTERS, DRILLED AND GROUTED
- (6) COMBINATION CURB & GUTTER TYPE B-V.12
- (7) P.C.C. SIDEWALK 5"
- (8) PARAPET WALL
- (9) BRIDGE FENCE RAILING

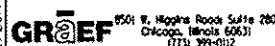
HOT-MIX ASPHALT MIXTURE REQUIREMENTS		
MIXTURE TYPE	AIR VOIDS	QUALITY MANAGEMENT PROGRAM (QMP)
STABILIZED SUBBASE 6"		
STABILIZED SUBBASE HMA (IL-19mm) 6"	4% @ 50 GYR	QC/OA
QMP DESIGNATION: QUALITY CONTROL/QUALITY ASSURANCE (QC/OA)		

THE UNIT WEIGHT USED TO CALCULATE ALL HOT-MIX ASPHALT SURFACE MIXTURE IS 112 LBS/SQ YD/IN.

THE "AC TYPE" FOR NON-POLYMERIZED HMA MIXES SHALL BE "PG 64-22" UNLESS MODIFIED BY DISTRICT ONE SPECIAL PROVISIONS. FOR USE OF RECYCLED MATERIALS SEE SPECIAL PROVISIONS.

QUALITY MANAGEMENT PROGRAM (QMP) IDENTIFIES THE PARTICULAR QUALITY CONTROL SPECIFICATION THAT APPLIES TO THE HMA MIXTURE.

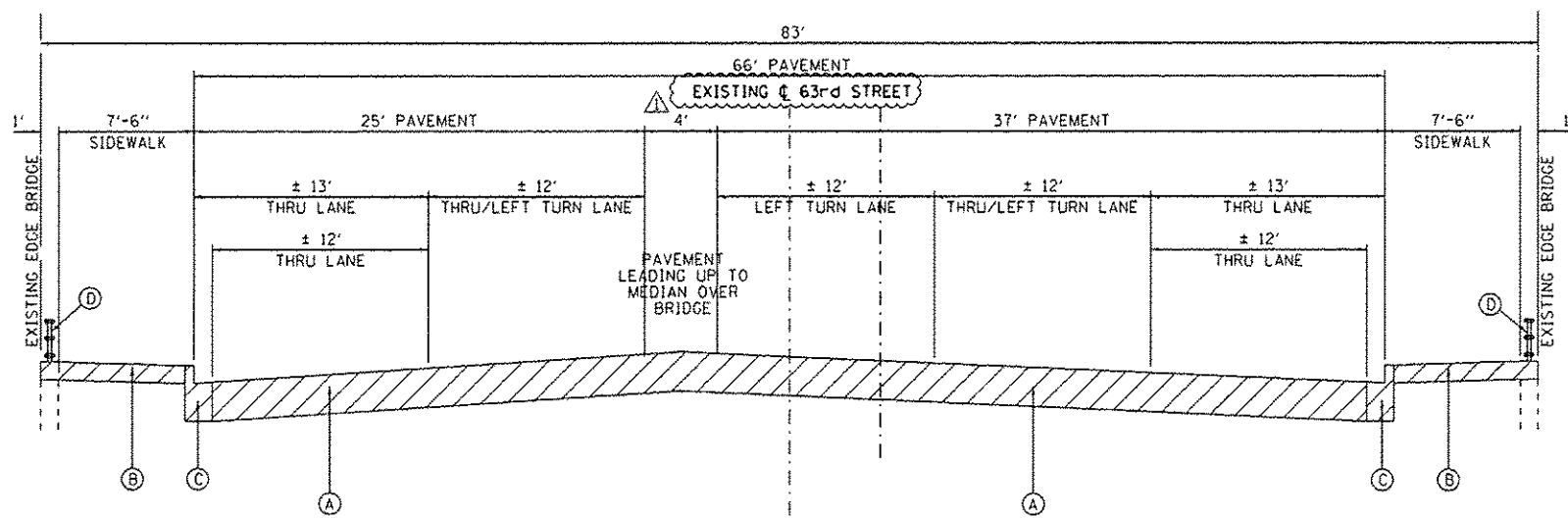
H:\Jobs\2014\20140322\CAD\ASIT\cogn\CD\060-15-sh1-1\typical.dgn 5/22/2014 2:24:53 PM



USER NAME : 0766	DESIGNED - JSD	REVISED - 5/23/2014 GRAEF
PLLOT SCALE = 100.0000' / 1"	DRAWN - HJM	REVISED -
PLLOT DATE = 5/22/2014	CHECKED - TNS	REVISED -
	DATE - 03-15-2013	REVISED -

STATE OF ILLINOIS
DEPARTMENT OF TRANSPORTATION

63rd STREET BRIDGE REPLACEMENT - COOK COUNTY					F.A.I. R.T.E.	SECTION	COUNTY	TOTAL SHEETS	SHEET NO.
TYPICAL SECTIONS					94	1920-B	COOK	142	13
SCALE: 1"=50'					SHEET 1 OF 2 SHEETS		STA. TO STA.		ILLINOIS FED. AID PROJECT
					CONTRACT NO. 60J15				



NOTE: THE EXISTING AND PROPOSED 63RD ST. CENTERLINES ARE IN THE SAME LOCATION

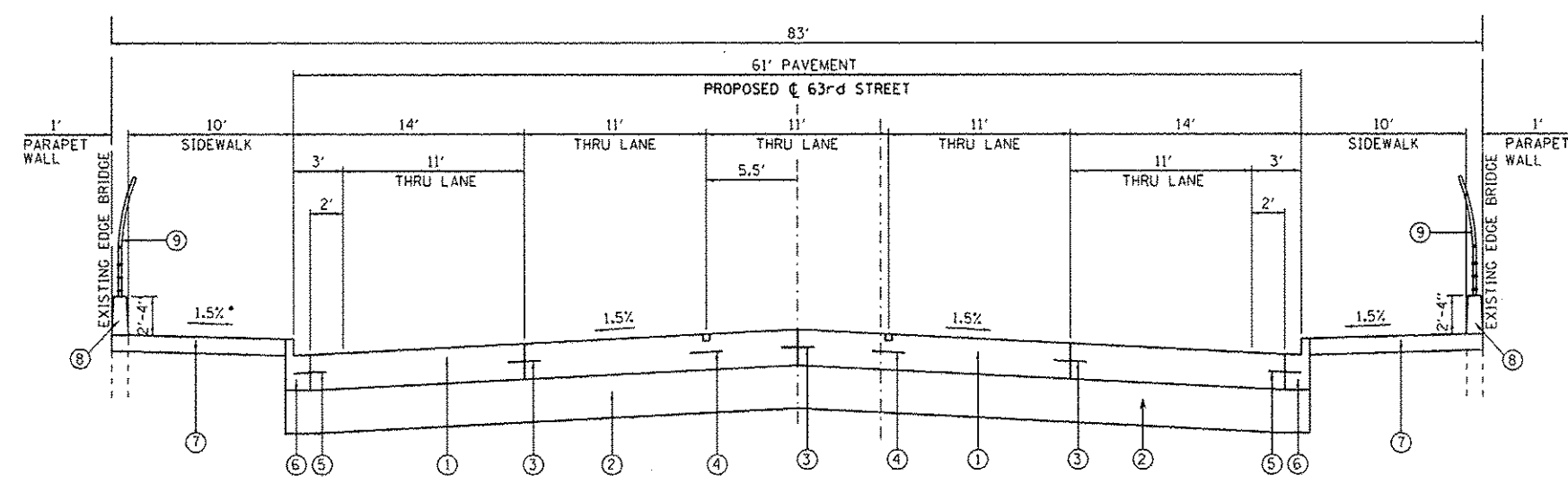
EXISTING TYPICAL SECTION
(LOOKING EAST)
STA. 19+19 TO STA. 19+86
STA. 23+66 TO STA. 23+92
BRIDGE OMISSION
STA. 19+86 TO STA. 23+66

EXISTING CONDITIONS:

- (A) P.C.C. PAVEMENT
 - (B) P.C.C. SIDEWALK
 - (C) P.C.C. CURB & GUTTER
 - (D) STEEL HANDRAIL (TO BE REMOVED)
- ITEM TO BE REMOVED

PROPOSED CONDITIONS:

- (1) P.C.C. PAVEMENT 10" (JOINTED)
- (2) AGGREGATE SUBGRADE IMPROVEMENT 12"
- (3) LONGITUDINAL CONSTRUCTION JOINT WITH NO. 6x24 DEFORMED EPOXY COATED TIE BARS AT 24" CENTERS
- (4) LONGITUDINAL SAWED JOINT WITH NO. 6x30 DEFORMED EPOXY COATED TIE BARS AT 30" CENTERS
- (5) NO. 5x30 EPOXY COATED ROUND TIE BARS AT 30" CENTERS
- (6) COMBINATION CURB & GUTTER TYPE B-V.12
- (7) P.C.C. SIDEWALK 5"
- (8) PARAPET WALL
- (9) BRIDGE FENCE RAILING



* SLOPE 1" AT BRIDGE APPROACH PAVEMENT

PROPOSED TYPICAL SECTION
(LOOKING EAST)
STA. 19+19 TO STA. 19+93.60
STA. 23+58.41 TO STA. 23+92
BRIDGE OMISSION
STA. 19+93.60 TO STA. 23+58.41

H:\J0522014\20140222\AC40\1118\cgr\00\0860\J5-shr-1\typical02.dgn
 5/22/2014 2:22:12PM



USER NAME + 0766	DESIGNED - JSO	REVISED - 5/23/2014 GRAEF
DRAWN - HJM	CHECKED - TNS	DATE - 03-15-2013
PLT SCALE + 100.0000 / 1" = 100'		
PLT DATE + 5/22/2014		

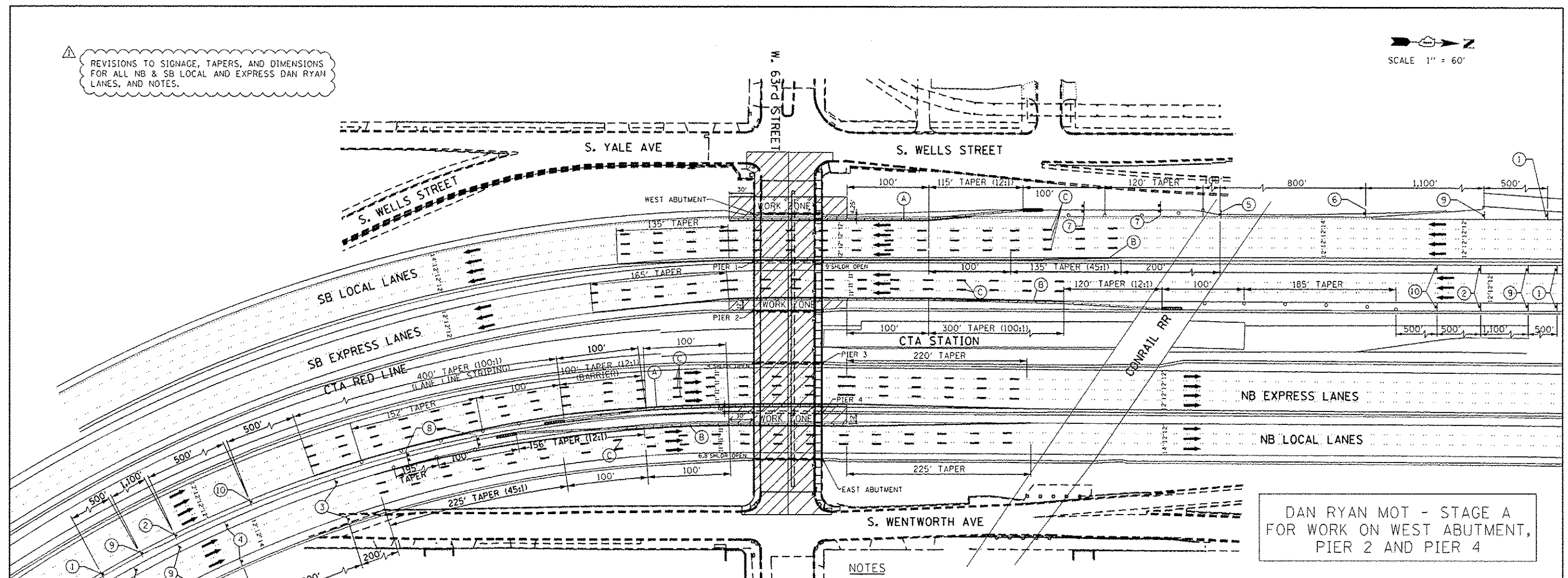
STATE OF ILLINOIS
DEPARTMENT OF TRANSPORTATION

63rd STREET BRIDGE REPLACEMENT - COOK COUNTY
TYPICAL SECTIONS
SCALE: 1"=50' SHEET 2 OF 2 SHEETS STA. TO STA.

F.A.I. RTE.	SECTION	COUNTY	TOTAL SHEETS	SHEET NO.
94	1920-B	COOK	142	14
CONTRACT NO. 60J15				
ILLINOIS FED. AID PROJECT				

REVISIONS TO SIGNAGE, TAPERS, AND DIMENSIONS FOR ALL NB & SB LOCAL AND EXPRESS DAN RYAN LANES, AND NOTES.

SCALE 1" = 60'



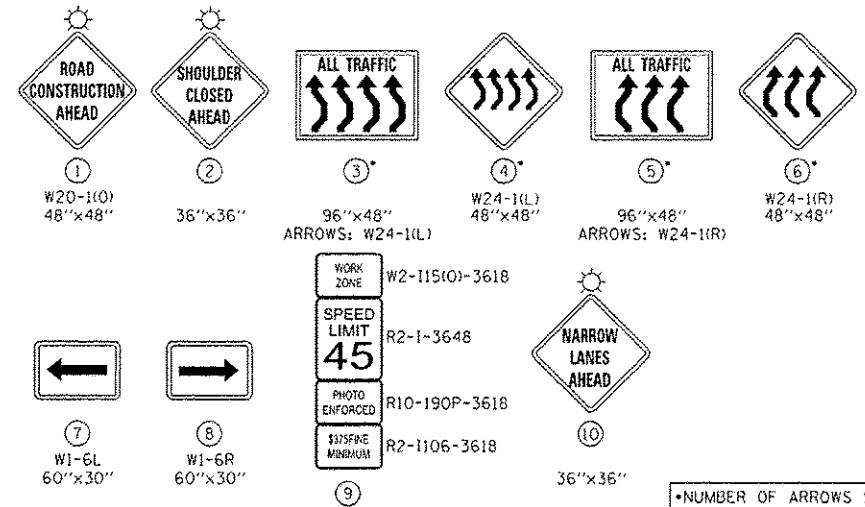
DAN RYAN MOT - STAGE A FOR WORK ON WEST ABUTMENT, PIER 2 AND PIER 4

NOTES

- TEMPORARY CONCRETE BARRIERS SHALL HAVE IMPACT ATTENUATOR AT END OF BARRIER AS PER DISTRICT ONE STANDARD.
- FOR BOTH STAGES OF CONSTRUCTION ON 63RD STREET THERE WILL BE 2 STAGES ON THE EXPRESSWAY IN ORDER TO SHIFT WORK AREAS SO THAT ADJACENT PIERS/ABUTMENTS ARE NOT BEING WORKED ON AT THE SAME TIME.
DURING DAN RYAN STAGE A THE CONTRACTOR SHALL CONFINE WORK TO THE FOLLOWING PIERS/ABUTMENTS:
- WEST ABUTMENT, PIER 2, PIER 4
SEE FOLLOWING SHEET FOR DAN RYAN STAGE B.
- DURING BOTH STAGES OF 63RD STREET BRIDGE SUPERSTRUCTURE CONSTRUCTION, SWITCH DAN RYAN MOT BETWEEN DAN RYAN STAGE A AND STAGE B AS NEEDED DEPENDING ON PIER REMOVAL AND CONSTRUCTION.
- THE DAN RYAN SHOULDERS HAVE RECESSED RUMBLE STRIPS. PRIOR TO SHIFTING TRAFFIC ONTO SHOULDERS, THE RUMBLE STRIPS WILL BE TEMPORARILY FILLED IN WITH A TEMPORARY COLD MIX PATCH UNDER THE ITEM PARTIAL DEPTH PATCHING, WHICH SHALL BE MAINTAINED UNTIL TRAFFIC IS SHIFTED OFF THE SHOULDER. THE TEMPORARY PATCHING SHALL THEN BE REMOVED, AND THE RUMBLE STRIPS REESTABLISHED.
- USE APPLICABLE PORTIONS OF IDOT DISTRICT ONE STANDARDS: "TRAFFIC CONTROL DETAILS FOR FREEWAY SINGLE & MULTI-LANE WEAVE" (TC-09) AND "TRAFFIC CONTROL DETAILS FOR FREEWAY SHOULDER CLOSURES AND PARTIAL RAMP CLOSURES" (TC-17). ALSO USE IDOT STANDARD "APPROACH TO LANE CLOSURE, FREEWAY/EXPRESSWAY" (701400) FOR SIGNING IN ADVANCE OF WHAT IS SHOWN ON THESE PLANS.
- ALL EXISTING PAVEMENT MARKINGS REMOVED DUE TO TRAFFIC CONTROL SHALL BE REPLACED IN KIND AS DIRECTED BY THE ENGINEER.
- FOR THE REMOVAL OF EXISTING PAVEMENT MARKING AND PLACEMENT OF TEMPORARY AND PERMANENT PAVEMENT MARKING, USE IDOT DISTRICT ONE STANDARD: "MULTI-LANE FREEWAY PAVEMENT MARKING DETAILS" (TC-12), MODIFIED AS DIRECTED BY THE ENGINEER.
- FOR NIGHTTIME LANE CLOSURES, USE APPLICABLE PORTIONS OF IDOT STANDARDS 701400 AND 701401, AND DISTRICT ONE STANDARDS TC-9 AND TC-17. ALSO ADHERE TO THE SPECIFICATIONS OF DISTRICT ONE SPECIAL PROVISION "KEEPING THE EXPRESSWAY OPEN TO TRAFFIC" (9010001), LATEST EDITION.
- WORK IN ACCORDANCE WITH TRAFFIC CONTROL AND PROTECTION STANDARDS WILL NOT BE PAID FOR SEPARATELY, BUT SHALL BE PAID FOR AS "TRAFFIC CONTROL AND PROTECTION (EXPRESSWAY)", LUMP SUM.
- TAPE TEMPORARY PAVEMENT MARKINGS SHALL BE USED ON EXISTING/NEWLY CONSTRUCTED SURFACES. TEMPORARY PAINT SHALL BE USED ON 63RD STREET TEMPORARY PAVEMENT OR PAVEMENT TO BE REMOVED. PAINT OR TEMPORARY PAINT SHALL NOT BE USED ON EXPRESSWAY OR RAMP PAVEMENT.
- TEMPORARY PAVEMENT MARKING (PAINT) SHALL BE REQUIRED ON ALL 63RD ST. TEMPORARY PAVEMENT SURFACES OVER THE WINTER MONTHS. PAINT USED OVER THE WINTER MONTHS IN THE TRANSITION AREAS ON EXISTING SURFACES SHALL BE REMOVED BY GRINDING WHEN THE FINAL PAVEMENT MARKINGS ARE INSTALLED. ON EXPRESSWAYS, EPOXY MARKINGS SHALL BE REQUIRED ON ALL TEMPORARY PAVEMENT SURFACES OVER THE WINTER MONTHS. EPOXY USED OVER THE WINTER IN TRANSITION AREAS AT THE LIMITS OF CONSTRUCTION ON EXISTING SURFACES SHALL BE REMOVED BY GRINDING WHEN FINAL PAVEMENT MARKINGS ARE INSTALLED.

LEGEND:

- 63rd STREET - STAGE I CONSTRUCTION
- 63rd STREET - STAGE II CONSTRUCTION
- TEMPORARY CONCRETE BARRIER
- EXISTING PAVEMENT MARKINGS
- TEMPORARY PAVEMENT MARKINGS
- (A) - 4" WHITE EDGE LINE (RIGHT)
- (B) - 4" YELLOW EDGE LINE (LEFT)
- (C) - 5" WHITE SKIP DASH LANE LINES (10' DASH, 30' SKIP)
- SIGN ON PORTABLE OR PERMANENT SUPPORT
- PLASTIC DRUMS WITH STEADY BURN LIGHTS AT 50' C-C IN TAPERS AND 100' C-C IN TANGENTS OR TYPE II BARRICADE
- IMPACT ATTENUATOR, TEMPORARY (FULLY REDIRECTIVE, NARROW) TEST LEVEL 3 (20030260)
- TRAFFIC DIRECTION
- TYPE III BARRICADE

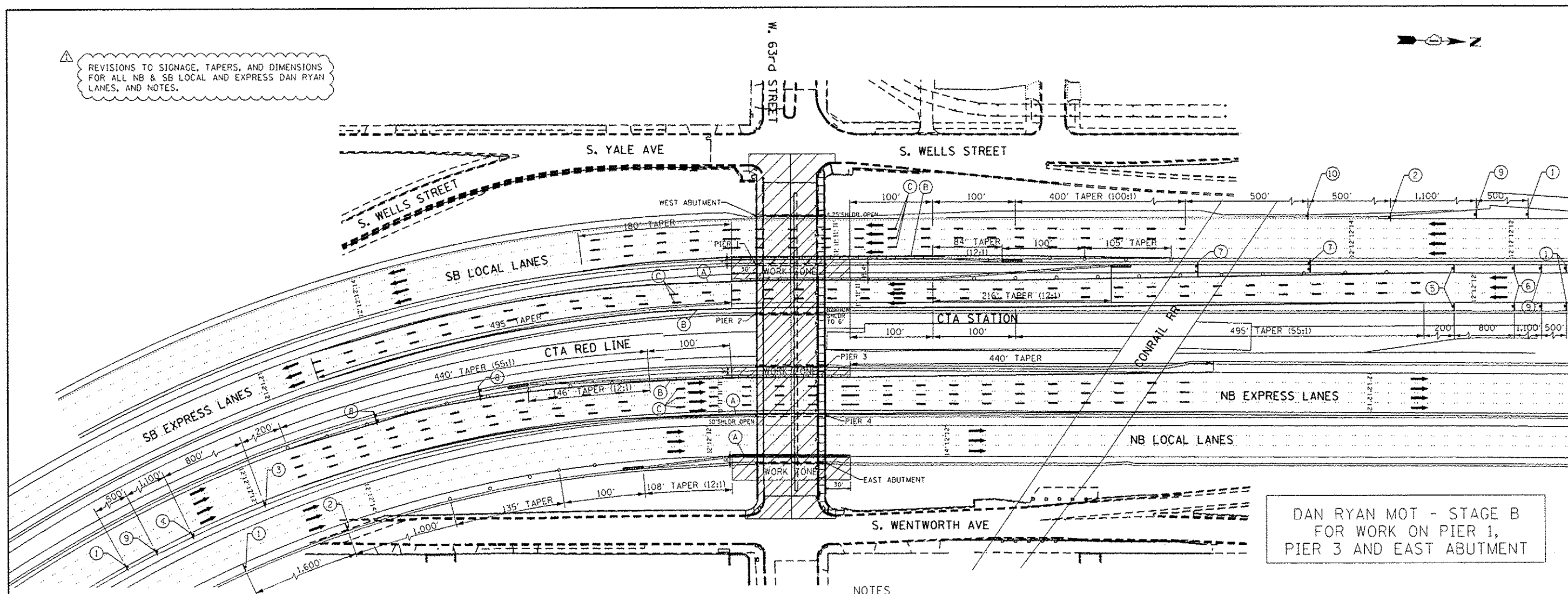


*NUMBER OF ARROWS SHALL MATCH NUMBER OF LANES OPEN TO TRAFFIC

I:\Projects\2013\20130222\CAD\Site\cgm\00106005-sht-101 Den Ryan01.dgn 5/22/2014 8:58:40 PM

	USER NAME = 0766	DESIGNED - JSO	REVISED - 5/23/2014 GRAEF	STATE OF ILLINOIS DEPARTMENT OF TRANSPORTATION	63rd STREET BRIDGE REPLACEMENT - COOK COUNTY SUGGESTED MAINTENANCE OF TRAFFIC DAN RYAN EXPWY - STAGE A		F.A.I. RTE. 94	SECTION 1920-B	COUNTY COOK	TOTAL SHEETS 142	SHEET NO. 22
	PLOT SCALE = 1/20,000 / 1" = 100' PLOT DATE = 5/22/2014	DRAWN - HJM CHECKED - TNS DATE - 03-15-2013	REVISED - REVISED - REVISED -		SCALE: 1"=60' SHEET OF SHEETS STA. TO STA.	CONTRACT NO. 60J15 ILLINOIS FED. AID PROJECT					

REVISIONS TO SIGNAGE, TAPERS, AND DIMENSIONS FOR ALL NB & SB LOCAL AND EXPRESS DAN RYAN LANES, AND NOTES.



DAN RYAN MOT - STAGE B FOR WORK ON PIER 1, PIER 3 AND EAST ABUTMENT

NOTES

- TEMPORARY CONCRETE BARRIERS SHALL HAVE IMPACT ATTENUATOR AT END OF BARRIER AS PER DISTRICT ONE STANDARD.
- FOR BOTH STAGES OF CONSTRUCTION ON 63rd STREET THERE WILL BE 2 STAGES ON THE EXPRESSWAY IN ORDER TO SHIFT WORK AREAS SO THAT ADJACENT PIERS/ABUTMENTS ARE NOT BEING WORKED ON AT THE SAME TIME.
DURING DAN RYAN STAGE B THE CONTRACTOR SHALL CONFINE WORK TO THE FOLLOWING PIERS/ABUTMENTS:
- PIER 1, PIER 3, EAST ABUTMENT
SEE PREVIOUS SHEET FOR DAN RYAN STAGE A.
- DURING BOTH STAGES OF 63rd STREET BRIDGE SUPERSTRUCTURE CONSTRUCTION, SWITCH DAN RYAN MOT BETWEEN DAN RYAN STAGE A AND STAGE B AS NEEDED DEPENDING ON PIER REMOVAL AND CONSTRUCTION.
- USE APPLICABLE PORTIONS OF IDOT DISTRICT ONE STANDARDS: "TRAFFIC CONTROL DETAILS FOR FREEWAY SINGLE & MULTI-LANE WEAVE" (TC-09) AND "TRAFFIC CONTROL DETAILS FOR FREEWAY SHOULDER CLOSURES AND PARTIAL RAMP CLOSURES" (TC-17).
ALSO USE IDOT STANDARD "APPROACH TO LANE CLOSURE, FREEWAY/EXPRESSWAY" (701400) FOR SIGNING IN ADVANCE OF WHAT IS SHOWN ON THESE PLANS.
- ALL EXISTING PAVEMENT MARKINGS REMOVED DUE TO TRAFFIC CONTROL SHALL BE REPLACED IN KIND AS DIRECTED BY THE ENGINEER.
- FOR THE REMOVAL OF EXISTING PAVEMENT MARKING AND PLACEMENT OF TEMPORARY AND PERMANENT PAVEMENT MARKING, USE IDOT DISTRICT ONE STANDARD: "MULTI-LANE FREEWAY PAVEMENT MARKING DETAILS" (TC-12), MODIFIED AS DIRECTED BY THE ENGINEER.
- FOR NIGHTTIME LANE CLOSURES, USE APPLICABLE PORTIONS OF IDOT STANDARDS 701400 AND 701401, AND DISTRICT ONE STANDARDS TC-09 AND TC-12. ALSO ADHERE TO THE SPECIFICATIONS OF DISTRICT ONE SPECIAL PROVISION "KEEPING THE EXPRESSWAY OPEN TO TRAFFIC" (9010001) LATEST EDITION.
- WORK IN ACCORDANCE WITH TRAFFIC CONTROL AND PROTECTION STANDARDS WILL NOT BE PAID FOR SEPARATELY, BUT SHALL BE PAID FOR AS "TRAFFIC CONTROL AND PROTECTION (EXPRESSWAY)", LUMP SUM.
- TAPE TEMPORARY PAVEMENT MARKINGS SHALL BE USED ON EXISTING/NEWLY CONSTRUCTED SURFACES. TEMPORARY PAINT SHALL BE USED ON 63RD STREET TEMPORARY PAVEMENT OR PAVEMENT TO BE REMOVED. PAINT OR TEMPORARY PAINT SHALL NOT BE USED ON EXPRESSWAY OR RAMP PAVEMENT.
- TEMPORARY PAVEMENT MARKING (PAINT) SHALL BE REQUIRED ON ALL 63RD ST. TEMPORARY PAVEMENT SURFACES OVER THE WINTER MONTHS. PAINT USED OVER THE WINTER MONTHS IN THE TRANSITION AREAS ON EXISTING SURFACES SHALL BE REMOVED BY GRINDING WHEN THE FINAL PAVEMENT MARKINGS ARE INSTALLED. ON EXPRESSWAYS, EPOXY MARKINGS SHALL BE REQUIRED ON ALL TEMPORARY PAVEMENT SURFACES OVER THE WINTER MONTHS. EPOXY USED OVER THE WINTER IN TRANSITION AREAS AT THE LIMITS OF CONSTRUCTION ON EXISTING SURFACES SHALL BE REMOVED BY GRINDING WHEN FINAL PAVEMENT MARKINGS ARE INSTALLED.

LEGEND:

- 63rd STREET - STAGE I CONSTRUCTION
- 63rd STREET - STAGE II CONSTRUCTION
- TEMPORARY CONCRETE BARRIER
- EXISTING PAVEMENT MARKINGS
- TEMPORARY PAVEMENT MARKINGS
- (A) - 4" WHITE EDGE LINE (RIGHT)
- (B) - 4" YELLOW EDGE LINE (LEFT)
- (C) - 5" WHITE SKIP DASH LANE LINES (10' DASH, 30' SKIP)
- SIGN ON PORTABLE OR PERMANENT SUPPORT
- PLASTIC DRUMS WITH STEADY BURN LIGHTS AT 50' C-C IN TAPERS AND 100' C-C IN TANGENTS OR TYPE II BARRICADE
- IMPACT ATTENUATOR, TEMPORARY (FULLY REDIRECTIVE, NARROW) TEST LEVEL 3 (20030260)
- TRAFFIC DIRECTION
- TYPE III BARRICADE

(1) W20-1(O) 48"x48"

(2) 36"x36"

(3) 96"x48" ARROWS: W24-1(L)

(4) W24-1(L) 48"x48"

(5) 96"x48" ARROWS: W24-1(R)

(6) W24-1(R) 48"x48"

W2-115(O)-3618

R2-1-3648

R10-190P-3618

R2-1106-3618

(10) *NUMBER OF ARROWS SHALL MATCH NUMBER OF LANES OPEN TO TRAFFIC

(7) W1-6L 60"x30"

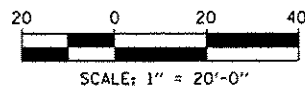
(8) W1-6R 60"x30"

H:\Jobs\2014\201403022\Cad\Drawings\60\06015-shr-MOT Dan Ryan-02.dgn 5/22/2014 8:56:10 PM

GRAEF 1501 S. Apple Road Suite 280 Chicago, Illinois 60631 (773) 399-0112	USER NAME = 0766	DESIGNED - JSO	REVISED - 5/23/2014 GRAEF	STATE OF ILLINOIS DEPARTMENT OF TRANSPORTATION	63rd STREET BRIDGE REPLACEMENT - COOK COUNTY SUGGESTED MAINTENANCE OF TRAFFIC DAN RYAN EXPWY - STAGE B	F.A.I. RTE. 94	SECTION 1920-B	COUNTY COOK	TOTAL SHEETS 142	SHEET NO. 23
	PLAT SCALE = 1/2"=40' 1/2" IN.	CHECKED - TNS	REVISIONS -			SCALE: 1"=60'	SHEET OF SHEETS	STA. TO STA.	ILLINOIS FED. AID PROJECT CONTRACT NO. 60J15	
	PLAT DATE = 5/22/2014	DATE - 03-15-2013	REVISIONS -							

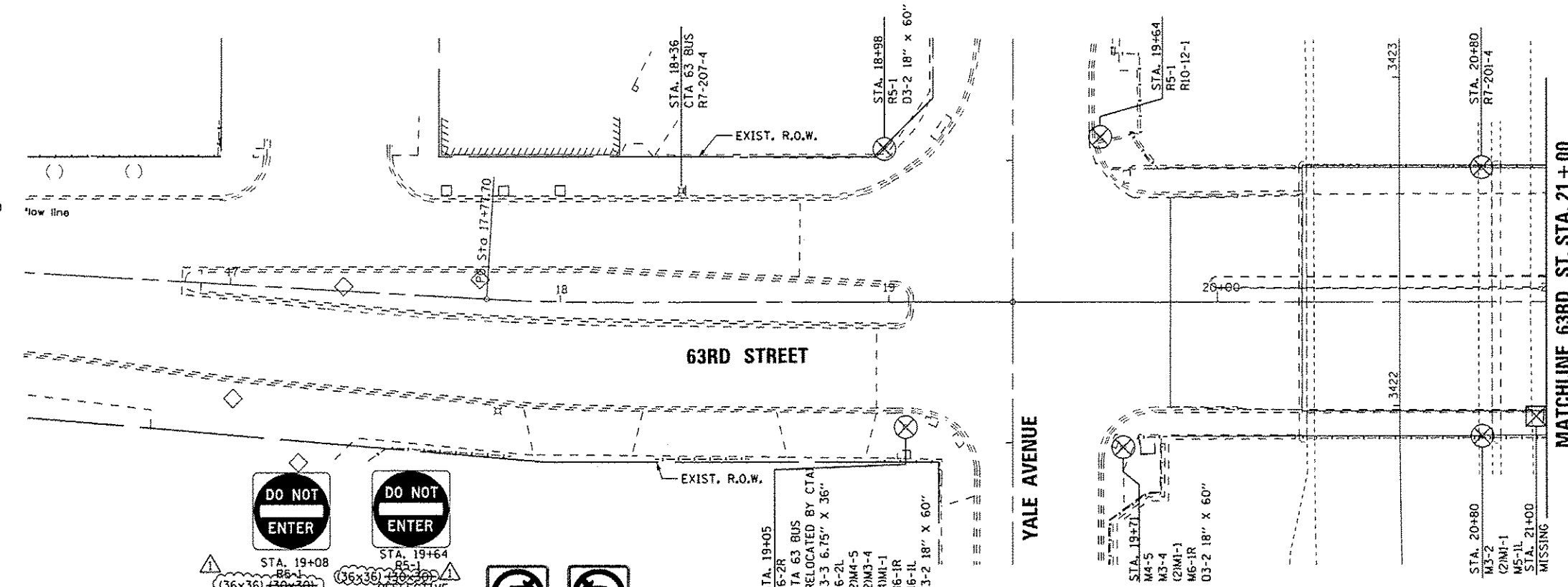
LEGEND

- ⊗ REMOVE SIGN PANEL AND SALVAGE
- ⊠ REMOVE SIGN ASSEMBLY AND SALVAGE
- ⊕ FURNISH AND INSTALL POLE AND BASE
- ⊔ MAINTAIN IN PLACE
- D/F DOUBLE FACED
- MA MAST ARM MOUNT
- FL FLAG MOUNT

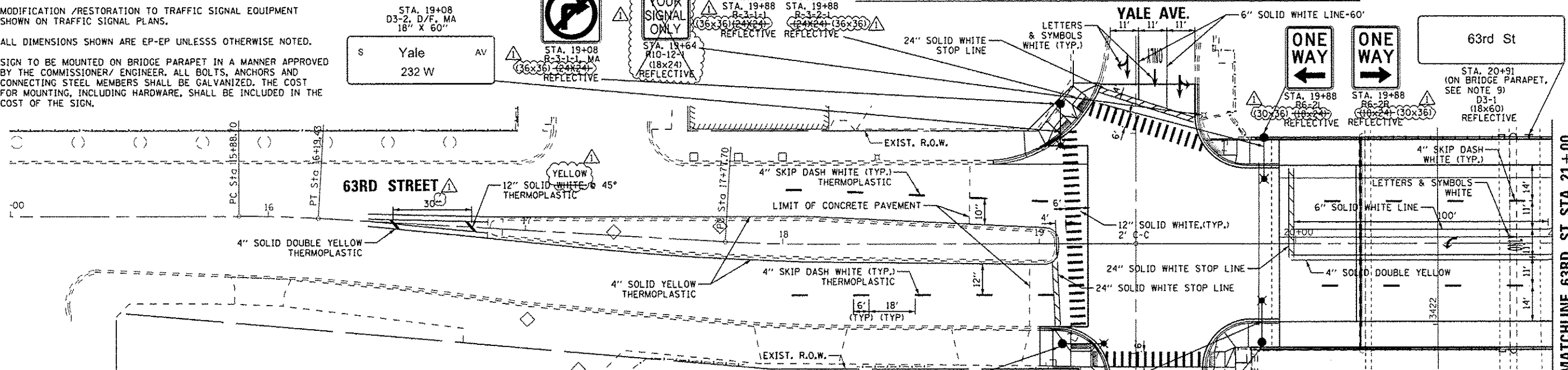


NOTES:

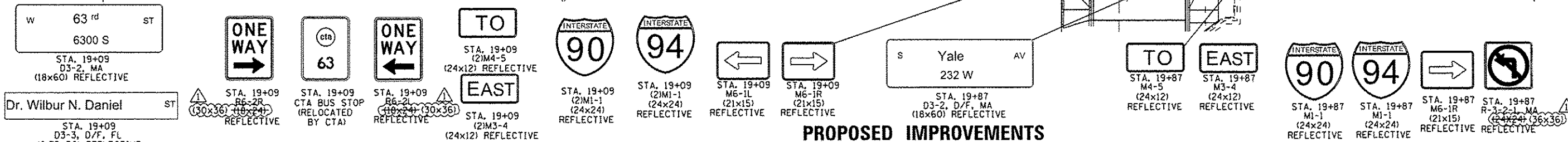
1. ALL EXISTING SIGN PANELS AND SIGN ASSEMBLIES IMPACTED BY THE PROJECT ARE TO BE REMOVED AND SALVAGED, UNLESS DIRECTED BY THE COMMISSIONER.
2. ONLY SIGNS IMPACTED BY THE PROJECT OR NEW SIGNS ARE SHOWN ON THE PLANS. ALL OTHER SIGNS SHALL REMAIN IN PLACE, UNLESS DIRECTED BY THE COMMISSIONER.
3. ALL SIGNS SHALL BE CENTER MOUNTED UNLESS OTHERWISE NOTED.
4. ARROWS FOR DOUBLE-SIDED SIGNS R7 SERIES SIGNS WILL BE ORIENTED TO IDENTIFY THE NO PARKING/LOADING ZONE. CONTRACTOR MUST NOTE THE LOCATION OF NO PARKING AREAS, LOADING ZONES, AND ONE-WAY STREETS PRIOR TO REMOVAL OF EXISTING SIGNS. PROPOSED SIGNING OF EXISTING NO PARKING/LOADING ZONES MUST MATCH EXISTING SIGNING UNLESS DIRECTED BY THE COMMISSIONER.
5. ALL PROPOSED SIGNING MUST CONFORM TO THE CITY OF CHICAGO DEPARTMENT OF TRANSPORTATION FIELD MANUAL FOR SIGN INSTALLATION AND/OR THE MANUAL OF UNIFORM TRAFFIC CONTROL DEVICES.
6. UNLESS OTHERWISE INDICATED ALL PAVEMENT MARKINGS TO BE POLYUREA.
7. MODIFICATION /RESTORATION TO TRAFFIC SIGNAL EQUIPMENT SHOWN ON TRAFFIC SIGNAL PLANS.
8. ALL DIMENSIONS SHOWN ARE EP-EP UNLESS OTHERWISE NOTED.
9. SIGN TO BE MOUNTED ON BRIDGE PARAPET IN A MANNER APPROVED BY THE COMMISSIONER/ ENGINEER. ALL BOLTS, ANCHORS AND CONNECTING STEEL MEMBERS SHALL BE GALVANIZED. THE COST FOR MOUNTING, INCLUDING HARDWARE, SHALL BE INCLUDED IN THE COST OF THE SIGN.



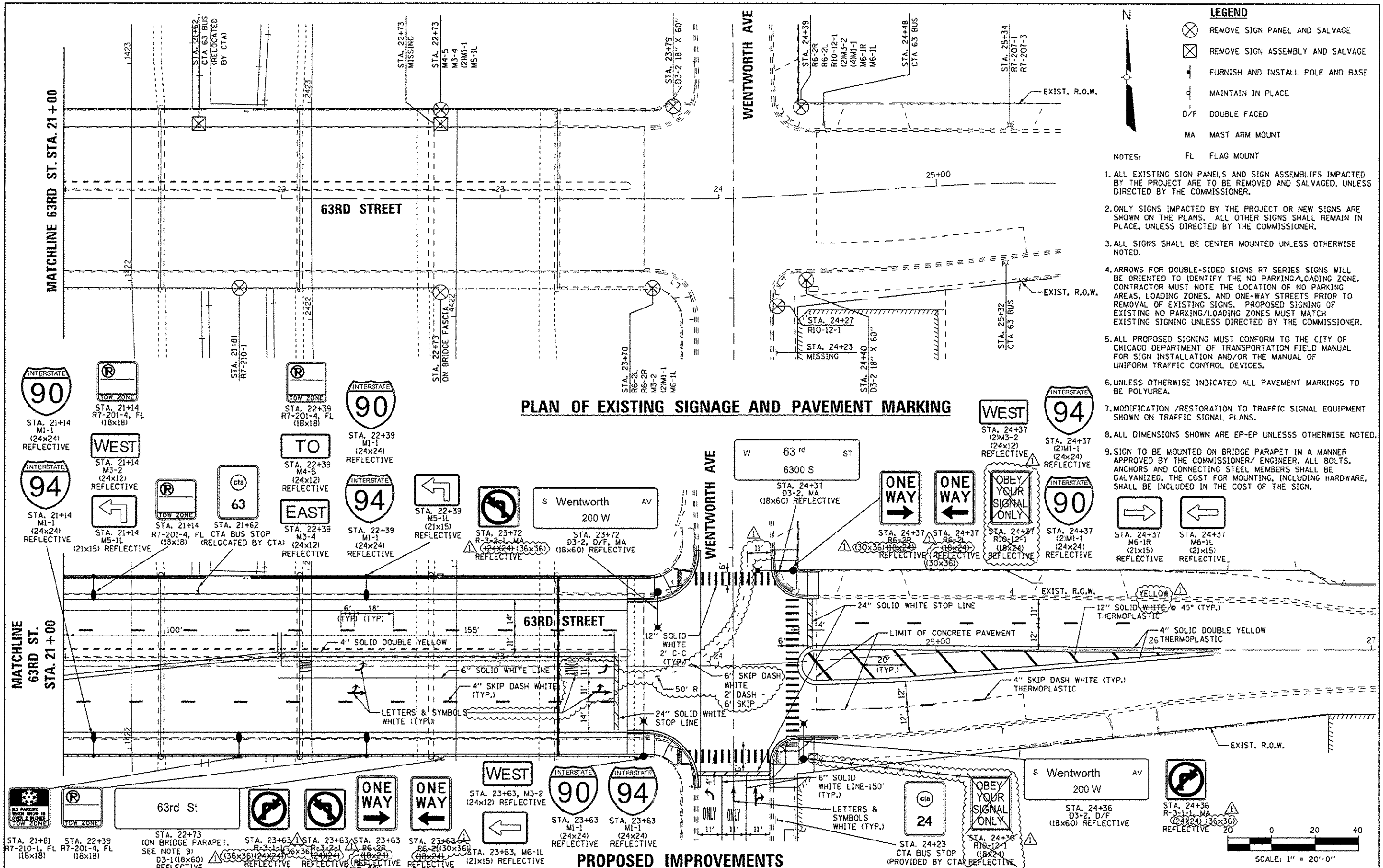
PLAN OF EXISTING SIGNAGE AND PAVEMENT MARKING



PROPOSED IMPROVEMENTS



FILE NAME *	USER NAME * USER#	DESIGNED - KMM	REVISED - 5/23/2014 RWA	STATE OF ILLINOIS DEPARTMENT OF TRANSPORTATION	SIGNAGE AND PAVEMENT MARKING PLAN 63RD STREET AT S. YALE AVENUE			F.A.I. RTE. 94	SECTION 1920-B	COUNTY COOK	TOTAL SHEETS 142	SHEET NO. 28
#FILE#		DRAWN - LV	REVISED -		SCALE: 1"=20'			SHEET NO. OF SHEETS STA.	TO STA.	CONTRACT NO. 60J15		
		CHECKED - JDH	REVISED -		ILLINOIS FED. AID PROJECT							
		DATE - 03-31-2014	REVISED -									



PLAN OF EXISTING SIGNAGE AND PAVEMENT MARKING

PROPOSED IMPROVEMENTS

FILE NAME *	USER NAME * USER*	DESIGNED - KMM	REVISED - 5/23/2014 RWA	<p>STATE OF ILLINOIS DEPARTMENT OF TRANSPORTATION</p> <p>SIGNAGE AND PAVEMENT MARKING PLAN 63RD STREET AT WENTWORTH AVENUE</p> <p>SCALE: 1"=20'</p>	F.A.I. RYE.	SECTION	COUNTY	TOTAL SHEETS	SHEET NO.
#FILE#		DRAWN - LV	REVISED -		94	1920-B	COOK	142	29
PLOT SCALE * SCALE*		CHECKED - JDH	REVISED -		CONTRACT NO. 60J15				
PLOT DATE * DATE*		DATE - 03-31-2014	REVISED -		ILLINOIS FED. AID PROJECT				

BILL OF MATERIALS

ITEM	UNIT	TOTAL QUANTITY	IDOT	CDOT
			UNDERPASS QUANTITY	OVERPASS QUANTITY
IDOT				
CONDUIT ATTACHED TO STRUCTURE, 1" DIA., PVC COATED GALVANIZED STEEL	FOOT	518	518	
CONDUIT ATTACHED TO STRUCTURE, 2" DIA., PVC COATED GALVANIZED STEEL	FOOT	140	140	
CONDUIT ATTACHED TO STRUCTURE, 3" DIA., PVC COATED GALVANIZED STEEL	FOOT	952	952	
JUNCTION BOX, STAINLESS STEEL, ATTACHED TO STRUCTURE, 6" X 6" X 4"	EACH	12	12	
JUNCTION BOX, STAINLESS STEEL, ATTACHED TO STRUCTURE, 12" X 10" X 6"	EACH	6	6	
JUNCTION BOX, STAINLESS STEEL, ATTACHED TO STRUCTURE, 24" X 24" X 10"	EACH	2	2	
UNIT DUCT, 600V, 3-1/C NO. 2, 1/C NO. 4 GROUND, (XLP-TYPE USE), 1 1/2" DIA. POLYETHYLENE	FOOT	402	402	
UNIT DUCT, 600V, 3-1/C NO. 2, 1/C NO. 4 GROUND, (XLP-TYPE USE), 1 1/2" DIA. POLYETHYLENE	FOOT	242	242	
ELECTRIC CABLE IN CONDUIT, 600V (XLP-TYPE USE) 1/C NO. 10	FOOT	2786	2786	
ELECTRIC CABLE IN CONDUIT, 600V (XLP-TYPE USE) 1/C NO. 4	FOOT	932	932	
ELECTRIC CABLE IN CONDUIT, 600V (XLP-TYPE USE) 1/C NO. 2	FOOT	2500	2500	
REMOVE ELECTRIC CABLE FROM CONDUIT	FOOT	5982	5982	
* MAINTENANCE OF LIGHTING SYSTEM	CAL.MO	6	6	
* REMOVE CONDUIT ATTACHED TO STRUCTURE	FOOT	2083	2083	
* REMOVE EXISTING JUNCTION BOX	EACH	30	30	
* PROTECTION AND MAINTENANCE OF EXISTING UNDERPASS LIGHTING	L.SUM	1	1	
CDOT				
UNDERGROUND CONDUIT, PVC, 2" DIA.	FOOT	237		237
CONDUIT ATTACHED TO STRUCTURE, 2" DIA., GALVANIZED STEEL	FOOT	634		634
CONDUIT EMBEDDED IN STRUCTURE, 2" DIA., PVC	FOOT	221		221
* REMOVE EXISTING STREET LIGHTING EQUIPMENT	L.SUM	1		1
* MAINTENANCE OF STREET LIGHTING SYSTEM (CITY OF CHICAGO)	L.SUM	1		1
* PAINT EXISTING STREET LIGHT/TRAFFIC EQUIPMENT COMPLETE	EACH	1		1
* CABLE IN CONDUIT, TRIPLEX, 2-1/C NO. 6 AND 1-1/C NO. 8 GROUND	FOOT	2692		2692
* RACK, SECONDARY-AERIAL, 2-WIRE	EACH	1		1
* POLE, STEEL, 32", ANCHOR BASE, 1 1/2" B.C., 7 GAUGE (INSTALL ONLY)	EACH	4		4
* MAST ARM, STEEL, STREET LIGHTING, 8 FOOT (INSTALL ONLY)	EACH	9		9
* MAST ARM, STEEL, STREET LIGHTING, 15 FOOT (INSTALL ONLY)	EACH	4		4
* LUMINAIRE, STREET LIGHT, CERAMIC METAL HALIDE, 210 WATT, 240 VOLT, ARTERIAL, SEMI-CUTOFF (INSTALL ONLY)	EACH	15		15
* WIRE, AERIAL, 1/C NO. 6	FOOT	260		260
* INDICATE SPECIAL PROVISION				

ABBREVIATIONS

ABBREVIATION	DESCRIPTION
AC	ALTERNATING CURRENT
A/C	AERIAL CABLE
AFG	ABOVE FINISHED GRADE
CB	CIRCUIT BREAKER
CKT	CIRCUIT
CM	CENTIMETER
CP	CONTROL PANEL
CT	CURRENT TRANSFORMER
DA	DAVIT ARM
DC	DIRECT CURRENT
DIA	DIAMETER
DP	DISTRIBUTION PANEL
E	EXISTING UNIT TO REMAIN
ECA	ELECTRIC CABLE ASSEMBLY
FT	FEET OR FOOT
FU	FUSE
GND	GROUND
HID	HIGH INTENSITY DISCHARGE
JB	JUNCTION BOX
KVA	KILOVOLT-AMPERE
KW	KILOWATTS
M	METER
MA	MAST ARM
MM	MILLIMETER
M.H.	MOUNTING HEIGHT
MW	MESSANGER WIRE
NO. #	NUMBER
P	PROPOSED
PB	PUSH BUTTON
PNL	PANEL
PVC	POLYVINYL CHLORIDE
PVCC	PVC COATED RIGID GALVANIZED CONDUIT
RGC	RIGID GALVANIZED CONDUIT
PT	POTENTIAL TRANSFORMER
RT	EXISTING UNIT TO BE REMOVED (OWNER SALVAGED U.N.O.)
RR	EXISTING UNIT TO BE REMOVED AND REINSTALLED
RECP	RECEPTACLE
RGC	RIGID GALVANIZED CONDUIT
SEL SW	SELECTOR SWITCH
SPARE	SPARE
SPACE	SPACE
SS	STAINLESS STEEL
STA	STATION
UD	UNIT DUCT
U.N.O.	UNLESS NOTED OTHERWISE
WP	WOOD POLE
XFMR	TRANSFORMER
HPS	HIGH PRESSURE SODIUM
LPS	LOW PRESSURE SODIUM
LTFM	LIGUID TIGHT FLEXIBLE METALLIC

GENERAL NOTES

- IT IS THE RESPONSIBILITY OF THE CONTRACTOR TO ASCERTAIN EXISTING FIELD CONDITIONS BEFORE BIDDING ON THIS PROJECT, SPECIFICALLY AS THEY RELATE TO LUMP SUM ITEMS AND UNIT PRICE ITEMS.
- ALL NEW CONDUITS, JUNCTION BOXES AND APPURTENANCES ARE INDICATED DIAGRAMMATICALLY ON THE DRAWINGS. THE ACTUAL LOCATIONS IN THE FIELD SHALL MEET WITH APPROVAL OF THE ENGINEER.
- THE ELECTRICAL WORK SHALL BE PERFORMED IN ACCORDANCE WITH THE LATEST CODES, STANDARDS AND THE IDOT STANDARD SPECIFICATIONS FOR ROAD AND BRIDGE CONSTRUCTION ADOPTED JANUARY 1, 2012, AND SUPPLEMENTAL SPECIFICATIONS AND RECURRING SPECIAL PROVISIONS.
- THE SCALE SHOWN ON PLAN DRAWINGS APPLIES ONLY TO THE FULL SIZE PLANS AND NOT TO REDUCED SIZE PLANS.
- THE CONTRACTOR SHALL BE RESPONSIBLE FOR THE ESTABLISHMENT OF THE FINISHED GRADE. THE ENGINEER MAY ASSIST THE CONTRACTOR, AS APPLICABLE, BUT THE RESPONSIBILITY FOR COORDINATION OF THE FINISHED GRADE WITH THE TOP OF THE FOUNDATION HEIGHTS AND THE LIKE SHALL REMAIN WITH THE CONTRACTOR.
- THE CONTRACTOR SHALL FURNISH AND INSTALL LUMINAIRE LAMPS IN ACCORDANCE WITH THE SUPPLIER'S RECOMMENDATIONS AND IN ACCORDANCE WITH THE SPECIFICATIONS. THE COST OF THIS WORK AND MATERIAL SHALL BE INCLUDED IN THE APPLICABLE LUMINAIRE PAY ITEM. SEPARATE PAYMENT WILL NOT BE MADE.
- ALL LUMINAIRES SHALL BE ORIENTED WITH THE OPTICS PERPENDICULAR TO THE ROADWAY UNLESS NOTED OTHERWISE OR DIRECTED BY THE ENGINEER. THE LUMINAIRES MAY REQUIRE NIGHT-TIME OPTICAL ADJUSTMENT UPON INSPECTION BY THE ENGINEER. THIS WORK SHALL BE CONSIDERED INCLUDED IN THE APPLICABLE LUMINAIRE PAY ITEMS. SEPARATE PAYMENT WILL NOT BE MADE.
- CONDUITS AND UNIT DUCTS SHALL BE INSTALLED AT A MINIMUM 30 INCH DEPTH BELOW GRADE AND POSITIONED IN THE FIELD TO AVOID CONFLICT WITH ROADWAY UNDERDRAINS AND OTHER EXISTING AND PROPOSED UTILITIES. THE CONTRACTOR SHALL INCREASE DEPTH OF UNIT DUCT AND CONDUIT AS REQUIRED AT NO ADDITIONAL COST OF THE STATE. THE CONTRACTOR SHALL COORDINATE RACEWAY DEPTH WITH THE ELECTRICAL DETAILS AND THE ENGINEER.
- THE CONTRACTOR SHALL MAKE SPECIAL NOTE OF THE SPECIFIED REQUIREMENTS FOR BURIED WARNING TAPE, AS PART OF THE UNDERGROUND CONDUIT OR UNIT DUCT. THE INSTALLATION OF THE TAPE SHALL BE INSPECTED BY THE ENGINEER PRIOR TO BACKFILLING OR DURING PLOWING OPERATIONS, AS APPLICABLE.
- WHERE THE CONTRACTOR'S EXCAVATION MEETS AN OBSTRUCTION, THE CONTRACTOR SHALL NOTIFY THE ENGINEER FOR DIRECTION IN WRITING PRIOR TO FURTHER EXCAVATION. THE CONTRACTOR SHALL RESTORE ANY DAMAGE TO EXISTING SYSTEMS OR UTILITIES AND REMOVE EXISTING OBSTRUCTIONS AND FOUNDATIONS TO THE SATISFACTION OF THE ENGINEER. THIS WORK SHALL BE CONSIDERED INCIDENTAL TO THE APPROPRIATE PAY ITEM.

INDEX OF DRAWINGS:

DRAWING NO.	STANDARD NO.	TITLE
E-1	-	GENERAL NOTES, ABBREVIATIONS, INDEX OF DRAWINGS AND SCHEDULE OF QUANTITIES
E-2	-	PROPOSED UNDERPASS LIGHTING PLAN
E-3	-	EXISTING UNDERPASS LIGHTING REMOVAL AND TEMPORARY LIGHTING PLAN
E-4	-	CONDUIT TRANSITION DETAILS
E-5	-	CONDUIT MOUNTING DETAILS ALONG BRIDGE
E-6	BE-902	IDOT DISTRICT 1 STANDARD DETAIL
E-7	-	ELECTRICAL GENERAL NOTES
E-8	826	CDOT STANDARD DETAILS
E-9	-	UNDERGROUND CONDUIT FACILITIES
E-10	-	STREET LIGHTING REMOVAL AND INSTALLATION PLAN
E-11	753, 620	CDOT STANDARD DETAILS
E-12	762	CDOT STANDARD DETAILS
E-13	840	CDOT STANDARD DETAILS

J:\2014\CDOT\Drawings\60J15\60J15-sht-11.dwg

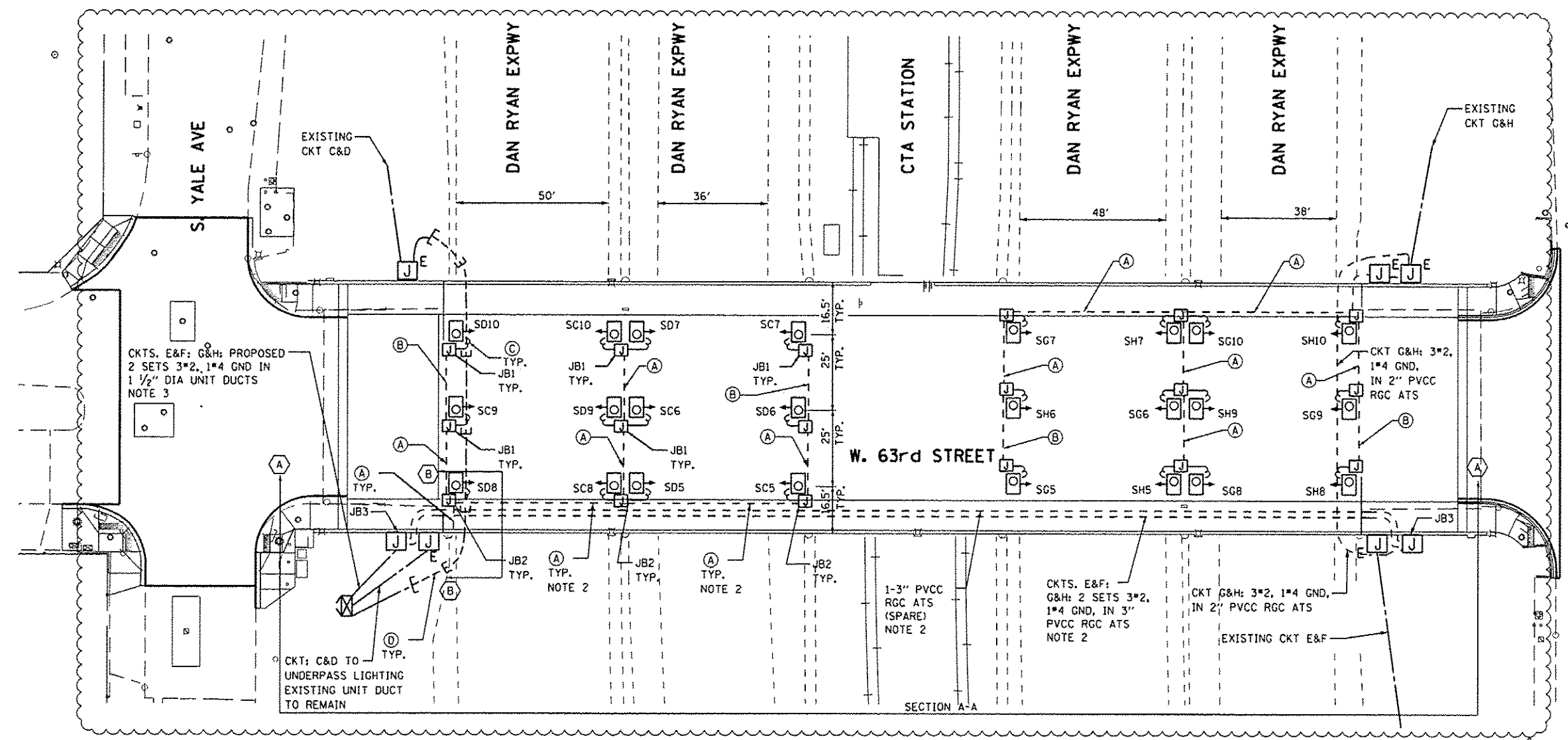
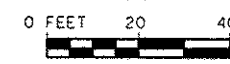


USER NAME: mgovrvid	DESIGNED: BN	REVISED: ADDENDUM 1 5/23/14
DRAWN: AM	CHECKED: KGP	DATE: 4/25/2014
PLOT SCALE: 2,000,000:1		
PLOT DATE: 22-MAY-2014 13:22		

STATE OF ILLINOIS
DEPARTMENT OF TRANSPORTATION

63rd STREET OVER DAN RYAN EXPRESSWAY (I-90 /94)
GENERAL NOTES, ABBREVIATIONS, INDEX OF DRAWINGS AND
SCHEDULE OF QUANTITIES

SCALE: N.T.S.	SHEET NO. 1 OF 13 SHEETS	STA. TO STA.	F.A.T. RTE. 94	SECTION 1920-B	COUNTY COOK	TOTAL SHEETS 142	SHEET NO. 52
						CONTRACT NO. 60J15	
FED. ROAD DIST. NO. 1 ILLINOIS FED. AID PROJECT							



CKTS. E&F: G&H: PROPOSED
2 SETS 3*2, 1*4 GND IN
1 1/2" DIA UNIT DUCTS
NOTE 3

CKT: C&D TO
UNDERPASS LIGHTING
EXISTING UNIT DUCT
TO REMAIN

W. 63rd STREET

SECTION A-A

1-3" PVCC
RGC ATS
(SPARE)
NOTE 2

CKTS. E&F:
G&H: 2 SETS 3*2,
1*4 GND, IN 3"
PVCC RGC ATS
NOTE 2

CKT G&H: 3*2, 1*4 GND,
IN 2" PVCC RGC ATS

EXISTING CKT E&F

LEGENDS

- EXISTING LIGHTING CONTROLLER, 480/240 VAC, 1PH, 3W 2-175A MAIN BREAKERS
- EXISTING UNDERPASS LUMINAIRE TO BE REINSTALLED, 70W HPS, ATTACHED TO STRUCTURE
- PROPOSED JUNCTION BOX, SIZE AND TYPE AS NOTED
- EXISTING JUNCTION BOX TO REMAIN IN PLACE
- PROPOSED CABLE IN CONDUIT, SIZE AND TYPE AS NOTED
- EXISTING CABLE OR UNIT DUCT IN CONDUIT
- UNIT DUCT IN TRENCH, SIZE AND TYPE AS NOTED

- (A) 3-1/2 NO. 10 AND 1/2 NO. 10 GND. IN 1" DIA PVCC RGC ATTACHED TO STRUCTURE
- (B) 2-1/2 NO. 10 AND 1/2 NO. 10 GND. IN 1" DIA PVCC RGC ATTACHED TO STRUCTURE
- (C) 2-1/2 NO. 10 AND 1/2 NO. 10 GND. IN 3/4" DIA LIQUID TIGHT FLEXIBLE CONDUIT
- (D) 3-1/2 NO. 4 AND 1/2 NO. 6 GND. UNIT DUCT IN 3" DIA CNC. EXISTING TO REMAIN
- JB1 JUNCTION BOX, STAINLESS STEEL, 6"x6"x4", ATTACHED ON TOP OF THE PIER
- JB2 JUNCTION BOX, STAINLESS STEEL, 12"x10"x6", MOUNTED ON TOP OF THE PIER CAP
- JB3 JUNCTION BOX, STAINLESS STEEL, 24"x24"x10", ATTACHED TO SIDE OF ABUTMENT WALL

NOTES:

1. ALL PROPOSED LOCATIONS OF UNDERPASS LUMINAIRES SHOWN ON THIS DRAWING SHALL BE PIER OR ABUTMENT WALL MOUNTED. SEE DRAWING BE-902 FOR PIER/ABUTMENT WALL MOUNTED UNDERPASS LIGHTING DETAILS.
2. THE CONDUIT SHALL BE ROUTED BETWEEN GIRDERS AS SHOWN ON DETAIL SHEET E-4 AND E-5.
3. CONTRACTOR IS RESPONSIBLE TO COORDINATE REMOVAL OF EXISTING LIGHTING SYSTEM WITH INSTALLATION OF PROPOSED LIGHTING SYSTEM. EXISTING CIRCUITS FOR HIGH MAST LIGHTING SHALL NOT BE REMOVED UNTIL PROPOSED CIRCUITS FOR HIGH MAST LIGHTING IS INSTALLED AND FULLY OPERATIONAL.

I:\288\001\CAOD_Sheets\UDOT\REQ\05-sh-1-r02.dgn



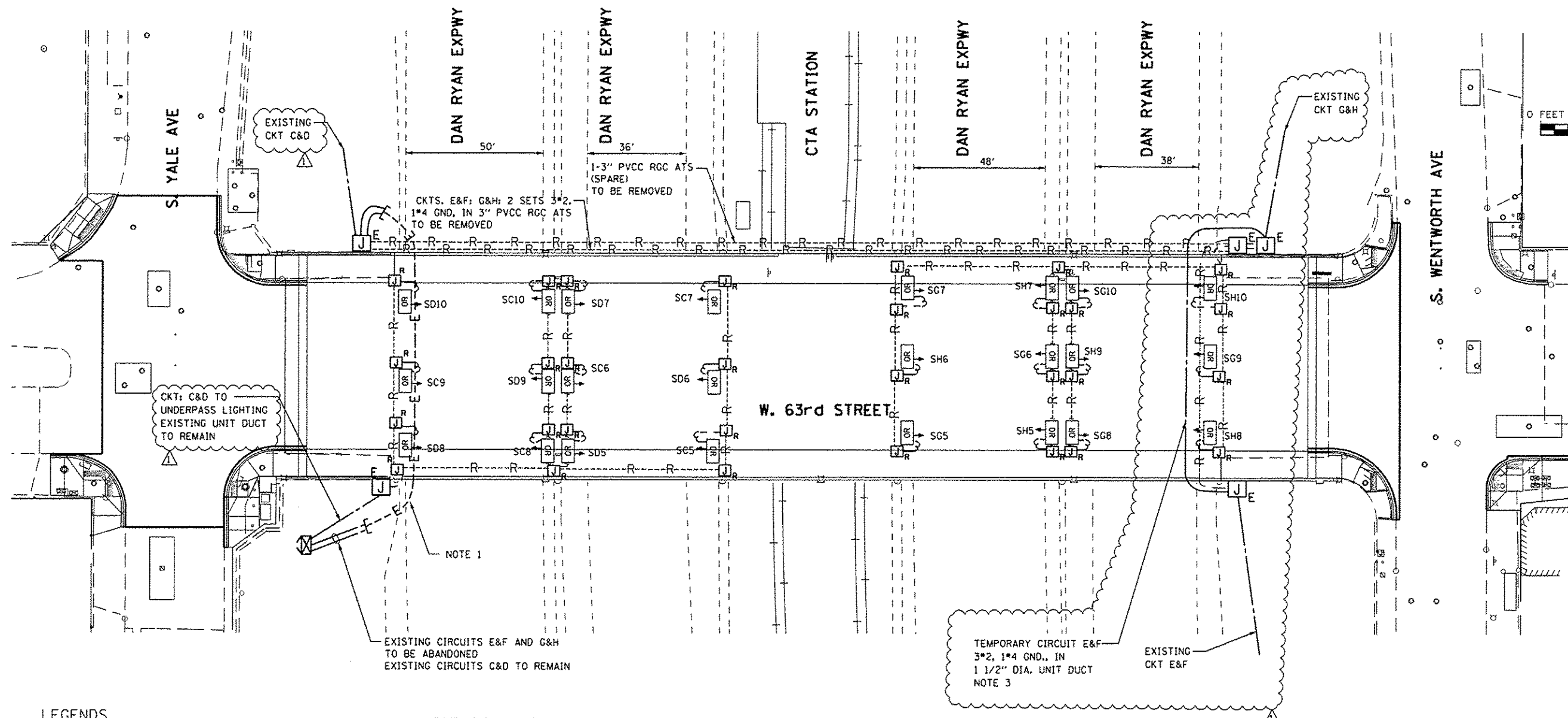
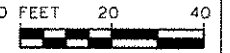
USER NAME : mgorvira	DESIGNED - BN	REVISED Δ - ADDENDUM 1 5/23/14
PLLOT SCALE : 48,0000391,000000	DRAWN - AM	REVISED -
PLLOT DATE : 22-MAY-2014 13:22	CHECKED - KGP	REVISED -
	DATE - 4/25/2014	REVISED -

STATE OF ILLINOIS
DEPARTMENT OF TRANSPORTATION

63rd STREET OVER DAN RYAN EXPRESSWAY (I-90 /94)
PROPOSED UNDERPASS LIGHTING PLAN

SCALE: 1" = 20' SHEET NO. 2 OF 13 SHEETS STA. TO STA.

F.A.I. RTE.	SECTION	COUNTY	TOTAL SHEETS	SHEET NO.
94	1920-B	COOK	142	53
CONTRACT NO. 60J15				
FED. ROAD DIST. NO. 1 ILLINOIS FED. AID PROJECT				



LEGENDS

- EXISTING LIGHTING CONTROLLER, 480/240 VAC, 1PH, 3W 2-175A MAIN BREAKERS REMAIN IN PLACE
- EXISTING UNDERPASS LUMINAIRE TO BE REMOVED AND REINSTALLED
- EXISTING JUNCTION BOX TO BE REMOVED
- EXISTING JUNCTION BOX TO REMAIN IN PLACE
- EXISTING UNIT DUCT IN CONDUIT TO REMAIN
- EXISTING CABLE AND CONDUIT TO BE REMOVED
- UNIT DUCT IN TRENCH, SIZE AND TYPE AS NOTED

LIST OF UNDERPASS LIGHTING ITEMS TO BE REMOVED:

- 24-70W HPS UNDERPASS LUMINAIRES TO BE REMOVED AND REINSTALLED
- 24-JUNCTION BOX, STAINLESS STEEL, 6"X6"X4", ATTACHED TO THE SIDE OF PIER
- 6-JUNCTION BOX, STAINLESS STEEL, 12"X10"X6", MOUNTED ON TOP OF THE PIER CAP
- 110FT-1" DIA LIQUID TIGHT FLEXIBLE CONDUIT, INCLUDING WIRES
- 1973FT-1" DIA PVCC RGC ATTACHED TO STRUCTURE, INCLUDING WIRES

NOTES:

1. THE EXISTING UNDERGROUND UNIT DUCTS IN CONDUIT CROSSING THE ROADWAY SHALL NOT BE DISRUPTED DURING EXISTING PAVEMENT REMOVAL AND INSTALLATION. CONTRACTOR SHALL BE RESPONSIBLE TO COORDINATE WITH THE ROADWAY CONSTRUCTION STAGES. ANY DAMAGE TO EXISTING UNIT DUCTS IN CONDUIT CROSSING THE ROADWAY SHALL BE REPLACED IN KIND THE SAME DAY SUCH THAT LIGHTING SYSTEM IS FULLY OPERATIONAL BEFORE NIGHT. THIS WORK SHALL BE APPROVED BY THE ENGINEER AND AT NO ADDITIONAL COST TO THE STATE.
2. THE EXISTING UNDERPASS LIGHTING SYSTEM REMOVAL SHALL BE COORDINATED WITH THE BRIDGE STRUCTURE REMOVAL. DURING CONSTRUCTION OF THE EASTBOUND 63RD STREET BRIDGE DECK, CONTRACTOR SHALL BE RESPONSIBLE TO MAINTAIN THE EXISTING UNDERPASS LIGHTING UNDER THE WESTBOUND 63RD STREET BRIDGE DECK, AND KEEP IT OPERATIONAL. CONTRACTOR IS RESPONSIBLE TO MAKE THE PROPOSED UNDERPASS LIGHTING UNDER THE EASTBOUND 63RD STREET BRIDGE DECK OPERATIONAL BEFORE REMOVING THE EXISTING UNDERPASS LIGHTING UNDER THE WESTBOUND 63RD STREET BRIDGE DECK. THIS WORK SHALL BE INCIDENTAL TO THE PROTECTION AND MAINTENANCE OF EXISTING UNDERPASS LIGHTING PAY ITEM.
3. THE EXISTING UNDERGROUND UNIT DUCTS GOING TO THE JUNCTION BOX ATTACHED TO THE BRIDGE STRUCTURE AND FROM THE JUNCTION BOX TO THE EXISTING HIGH-MAST LIGHTING TOWER SHALL BE ADJUSTED OR RE-ROUTED TO MAINTAIN EXISTING LIGHTING SYSTEM OPERATIONAL DURING CONSTRUCTION.
4. CONTRACTOR IS RESPONSIBLE TO COORDINATE REMOVAL OF EXISTING LIGHTING SYSTEM WITH INSTALLATION OF PROPOSED LIGHTING SYSTEM. EXISTING CIRCUITS FOR HIGH MAST LIGHTING SHALL NOT BE REMOVED UNTIL PROPOSED CIRCUITS FOR HIGH MAST LIGHTING IS INSTALLED AND FULLY OPERATIONAL.

J:\298\10gm\CADD_Sheets\100T\100J15-sh1-11g03.dgn



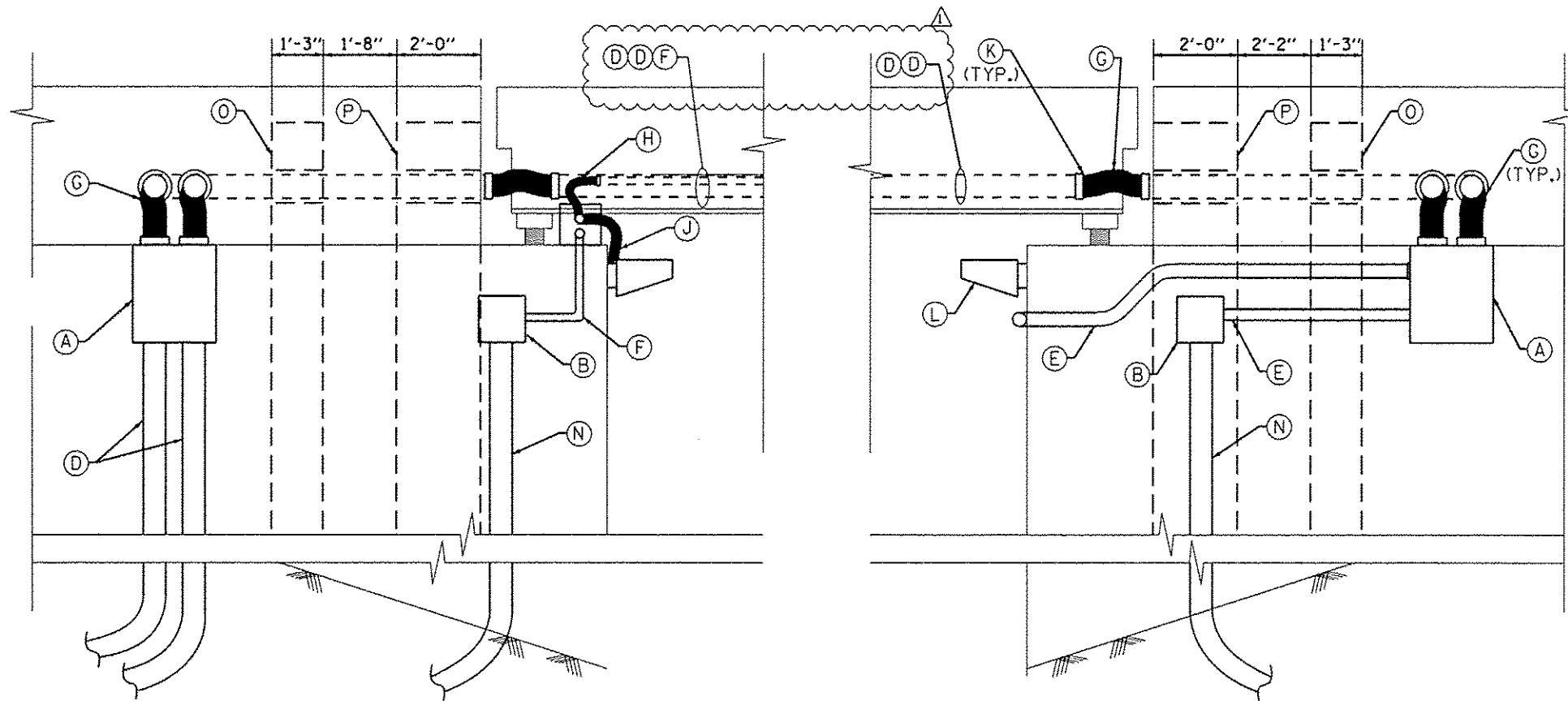
USER NAME = mgr-vidp	DESIGNED - BN	REVISED - ADDENDUM 1 5/23/14
PLOT SCALE = 40,0000000000000000	DRAWN - AM	REVISED -
PLOT DATE = 22-MAY-2014 13:22	CHECKED - KGP	REVISED -
	DATE - 4/25/2014	REVISED -

**STATE OF ILLINOIS
DEPARTMENT OF TRANSPORTATION**

**63rd STREET OVER DAN RYAN EXPRESSWAY (I-90 /94)
EXISTING UNDERPASS LIGHTING REMOVAL
AND TEMPORARY LIGHTING PLAN**

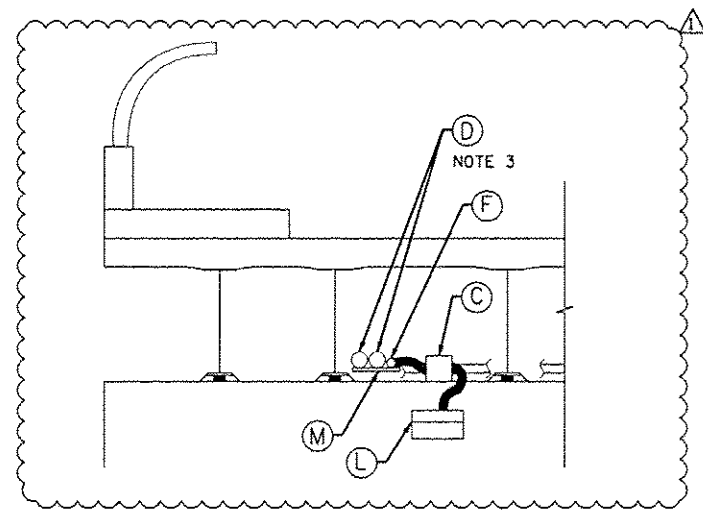
SCALE: 1" = 20' SHEET NO. 3 OF 13 SHEETS STA. TO STA.

F.A.I. RTE.	SECTION	COUNTY	TOTAL SHEETS	SHEET NO.
94	1920-B	COOK	142	54
CONTRACT NO. 60J15				
FED. ROAD DIST. NO. 1 ILLINOIS FED. AID PROJECT				



- LEGEND**
- (A) PROPOSED JUNCTION BOX, STAINLESS STEEL, 24"X24"X10" ATTACHED TO STRUCTURE
 - (B) EXISTING JUNCTION BOX ATTACHED TO STRUCTURE
 - (C) PROPOSED JUNCTION BOX, STAINLESS STEEL, 12"X10"X6" ATTACHED TO TOP OF THE PIER CAP
 - (D) 3" PVCC RGC ATTACHED TO STRUCTURE
 - (E) 2" PVCC RGC ATTACHED TO STRUCTURE,
 - (F) 1" PVCC RGC ATTACHED TO STRUCTURE,
 - (G) 3" LIQUIDTIGHT FLEXIBLE METALLIC CONDUIT, 3FT (NOTE 6)
 - (H) 1" LIQUIDTIGHT FLEXIBLE METALLIC CONDUIT, 2FT (NOTE 7)
 - (J) 3/4" LIQUIDTIGHT FLEXIBLE CONDUIT, 5FT
 - (K) PVCC RGS TO LIQUIDTIGHT FLEXIBLE CONDUIT COUPLING SIZE PER CONDUIT
 - (L) REINSTALLED EXISTING UNDERPASS LUMINAIRE
 - (M) HARDWARE FOR CONDUIT SUPPORT
 - (N) EXISTING CONDUIT
 - (O) EXISTING COUNTERFORT WALL
 - (P) NEW ABUTMENT BACKWALL

SECTION A-A
ELEVATION VIEW LOOKING NORTH AT SOUTH WING WALLS
ATTACHED CONDUIT TRANSITION DETAILS



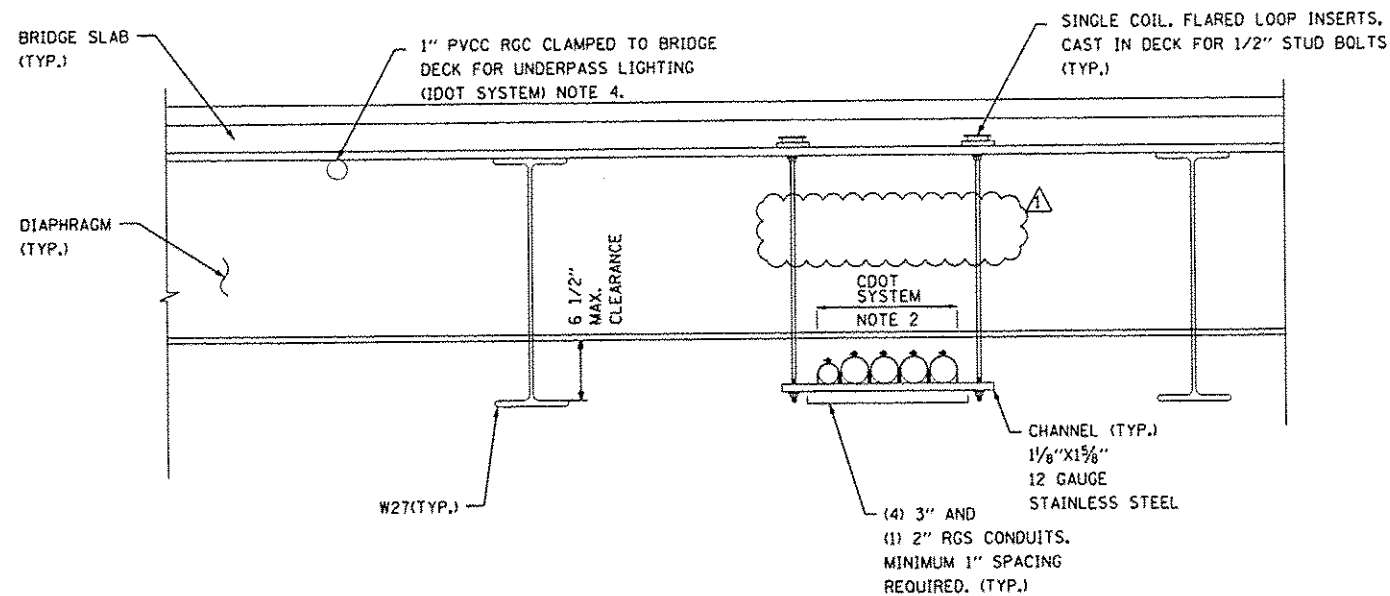
SECTION B-B
ELEVATION VIEW LOOKING WEST AT WEST ABUTMENT WALL

NOTES:

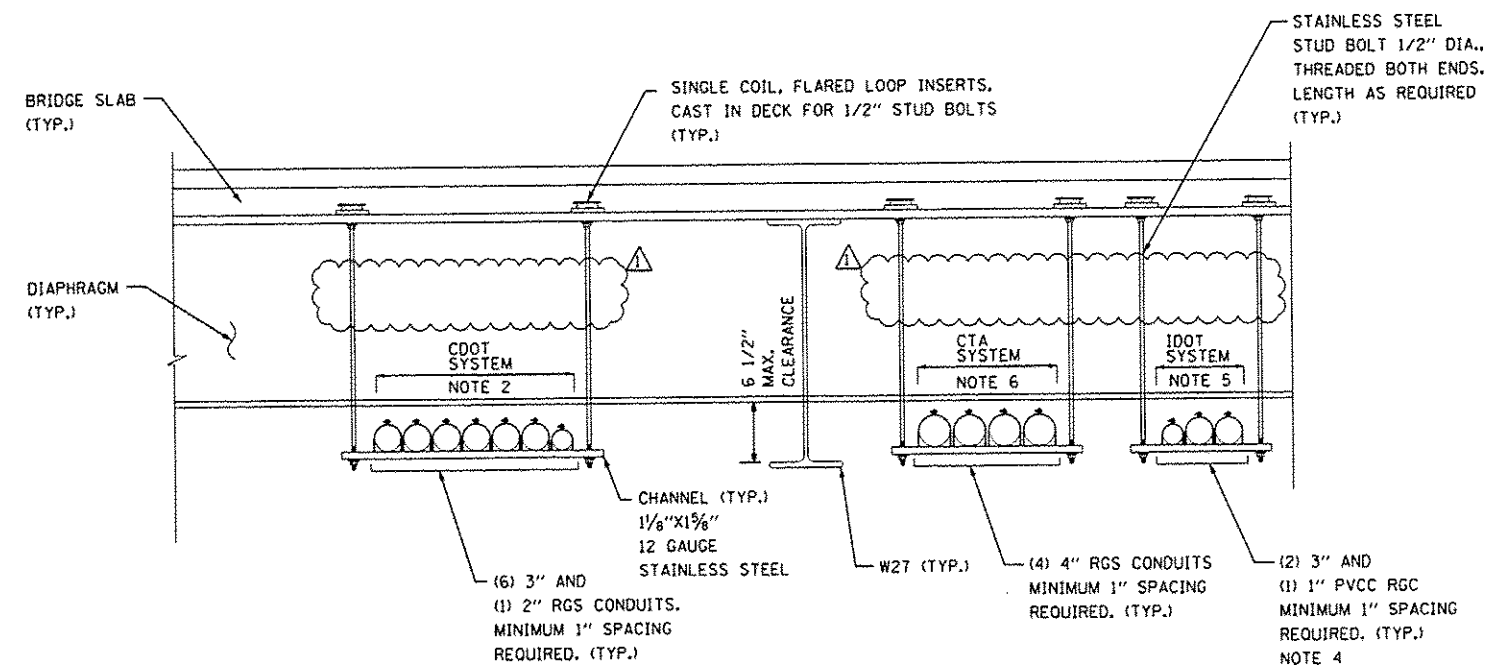
1. SEE STANDARD DETAIL DRAWING BE-902 FOR MORE DETAILS.
2. SEE PROPOSED UNDERPASS LIGHTING PLANS FOR WIRING.
3. SEE CONDUIT MOUNTING DETAILS SHEET E-5 FOR MORE INFORMATION.
4. CORE DRILL HOLES THROUGH EXISTING WING WALLS AND EXISTING COUNTERFORT WALL FOR 3" PVCC RGC CONDUIT PENETRATION, CORE DRILLING SHALL BE INCLUDED IN THE COST OF 3" PVCC RGC CONDUIT INSTALLATION.
5. PROVIDE GALVANIZED STEEL SLEEVE FOR EACH CONDUIT PENETRATION IN NEW ABUTMENT BACKWALL. SLEEVE DIAMETER SHALL BE 1" LARGER THAN CONDUIT OUTSIDE DIAMETER. GALVANIZED STEEL SLEEVE SHALL BE INCLUDED IN THE COST OF 3" PVCC RGC CONDUIT.
6. 3" LIQUIDTIGHT FLEXIBLE METALLIC CONDUITS NEEDED AT STRUCTURE JOINTS SHALL BE INCLUDED AS PART OF THE PAY ITEM "CONDUIT ATTACHED TO STRUCTURE, 3" DIA., PVC COATED GALVANIZED STEEL".
7. 1" LIQUIDTIGHT FLEXIBLE METALLIC CONDUITS NEEDED AT STRUCTURE JOINTS SHALL BE INCLUDED AS PART OF THE PAY ITEM "CONDUIT ATTACHED TO STRUCTURE, 1" DIA., PVC COATED GALVANIZED STEEL".

J:\298\Draws\CADD_Sheets\DOT_Dis\015-sh1-11904.dgn

	USER NAME : mgovrvid	DESIGNED - BN	REVISED Δ - ADDENDUM 1 5/23/14	STATE OF ILLINOIS DEPARTMENT OF TRANSPORTATION	63rd STREET OVER DAN RYAN EXPRESSWAY (I-90 /94)		F.A.I. RTE. 94	SECTION 1920-B	COUNTY COOK	TOTAL SHEETS 142	SHEET NO. 55	
	PLOT SCALE : 00.00000001.0000000	DRAWN - AM	REVISED -		SCALE: N.T.S.	SHEET NO. 4 OF 13 SHEETS STA. TO STA.		CONTRACT NO. 60J15				
	PLOT DATE : 22-MAY-2014 13:22	CHECKED - KGP	REVISED -		DATE - 4/25/2014			FED. ROAD DIST. NO. 1 [ILLINOIS] FED. AID PROJECT				



CONDUIT SUPPORT DETAIL UNDER WB 63RD ST. LANES
LOOKING EAST

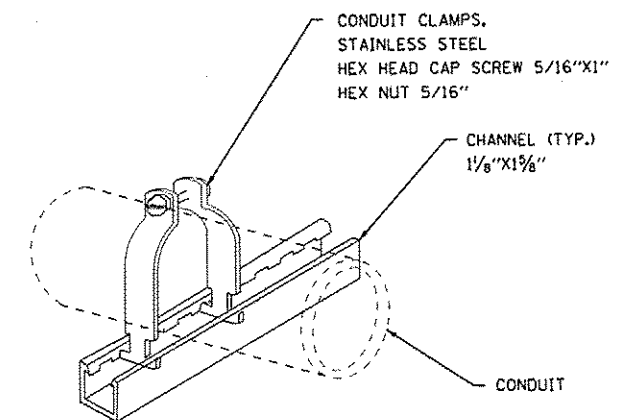


CONDUIT SUPPORT DETAIL UNDER EB 63RD ST. LANES
LOOKING EAST

CONDUIT MOUNTING DETAILS ALONG BRIDGE
N.T.S.

NOTES:

1. CONDUIT SUPPORT SHALL BE INSTALLED EVERY 10FT. COORDINATE WITH STRUCTURAL ENGINEER FOR SUPPORT INSTALLATION.
2. CONDUIT SUPPORT SYSTEM INCLUDING ALL ASSOCIATED HARDWARE SHALL BE INCLUDED IN THE COST OF 3-INCH RGS CONDUIT PAY ITEM INCLUDED IN TRAFFIC SIGNAL PLANS. SEE TRAFFIC SIGNAL PLANS FOR CONDUIT ROUTING.
3. SEE STRUCTURE PLANS FOR LOCATION OF CONDUIT MOUNTING ASSEMBLIES.
4. SEE PROPOSED UNDERPASS LIGHTING PLANS SHEET E-2 FOR CONDUIT ROUTING.
5. CONDUIT SUPPORT SYSTEM INCLUDING ALL HARDWARE SHALL BE INCLUDED IN THE COST OF 3-INCH PVCC RGC FOR HIGHMAST LIGHTING.
6. CONDUIT SUPPORT SYSTEM INCLUDING ALL HARDWARE SHALL BE INCLUDED IN THE COST OF 4-INCH RGS CONDUIT SHOWN IN THE DRAINAGE AND UTILITIES PLAN FOR THE CTA STATION.



CONDUIT CLAMP
DETAIL

J:\288\Drawn\CADD_Sheets\1001\050J15-sht-11-g05.dgn

SINGH
SINGH & ASSOCIATES P.C.
CONSULTING ENGINEERS

USER NAME = mgar-vida	DESIGNED - BN	REVISED Δ - ADDENDUM 1 5/23/14
	DRAWN - AM	REVISED -
PLOT SCALE = 0.0000001,000000	CHECKED - KGP	REVISED -
PLOT DATE = 22-MAY-2014 13:22	DATE - 4/25/2014	REVISED -

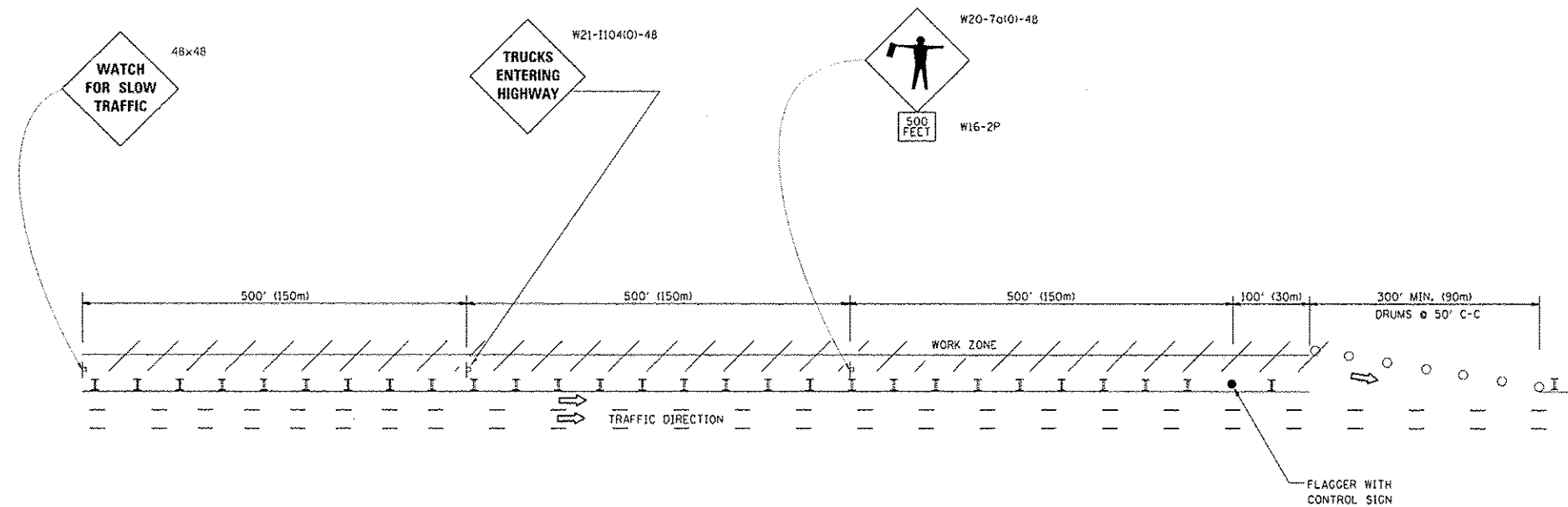
STATE OF ILLINOIS
DEPARTMENT OF TRANSPORTATION

63rd STREET OVER DAN RYAN EXPRESSWAY (I-90 /94)
CONDUIT MOUNTING DETAILS ALONG BRIDGE
SCALE: N.T.S. SHEET NO. 5 OF 13 SHEETS STA. TO STA.

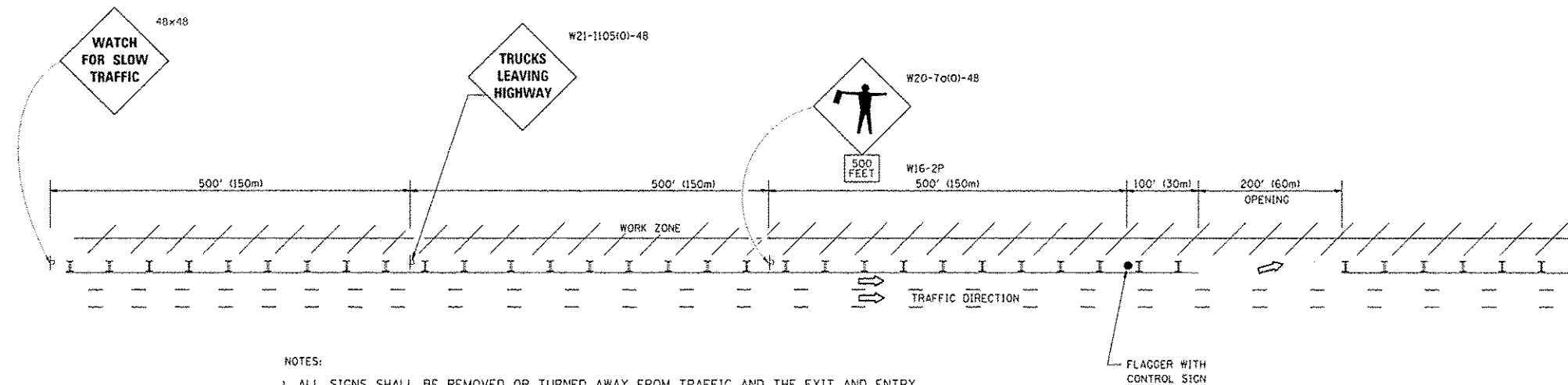
F.A.I. RTE.	SECTION	COUNTY	TOTAL SHEETS	SHEET NO.
94	1920-B	COOK	142	96
CONTRACT NO. 60J15				
FED. ROAD DIST. NO. 1 ILLINOIS FED. AID PROJECT				

SIGNING FOR FLAGGING OPERATIONS AT WORK ZONE OPENINGS

WORK ZONE EXIT OPENING



WORK ZONE ENTRY OPENING



NOTES:

1. ALL SIGNS SHALL BE REMOVED OR TURNED AWAY FROM TRAFFIC AND THE EXIT AND ENTRY OPENINGS SHALL BE CLOSED WHEN THE FLAGGING OPERATION CEASES. NON OPERATING EQUIPMENT SHALL COMPLY WITH ARTICLE 701.11
2. WORK ZONE OPENINGS SHALL BE A MINIMUM OF ONE HALF MILE APART AND A MINIMUM OF ONE QUARTER MILE FROM ALL ENTRANCE AND EXIT RAMP.
3. EXITING THE WORK ZONE AT ANY PLACE OTHER THAN AT A WORK ZONE EXIT OPENING WILL BE PROHIBITED.
4. ALL VEHICLES SHALL ENTER THE WORK ZONE AT ENTRY OPENINGS, USING THEIR TURN SIGNALS TO WARN MOTORISTS
5. FLAGGERS SHALL NOT STOP TRAFFIC OR DIRECT TRAFFIC INTO AN ADJACENT LANE.

NEW PLAN SHEET

5/23/2014 GRAEF

ALL DIMENSIONS ARE IN INCHES (MILLIMETERS) UNLESS OTHERWISE SHOWN

FILE NAME = c:\pwwork\pwwork\footen\ad8188315\to18.dgn	USER NAME = footen	DESIGNED -	REVISED - J.A.F. 02-06	STATE OF ILLINOIS DEPARTMENT OF TRANSPORTATION	FREEWAY/EXPRESSWAY SIGNING FOR FLAGGING OPERATIONS AT WORK ZONE OPENINGS ON FREEWAYS/EXPRESSWAYS	F.A. -	SECTION	COUNTY	TOTAL SHEETS	SHEET NO.	
		DRAWN -	REVISED - S.P.B. 01-07								138B
		CHECKED -	REVISED - S.P.B. 12-09			SCALE: NONE	SHEET NO. 1 OF 1 SHEETS	STA.	TO STA.	TC-18 CONTRACT NO.	
		DATE -	REVISED - M.D. 06-13					FED. ROAD DIST. NO. 1 ILLINOIS FED. AID PROJECT			