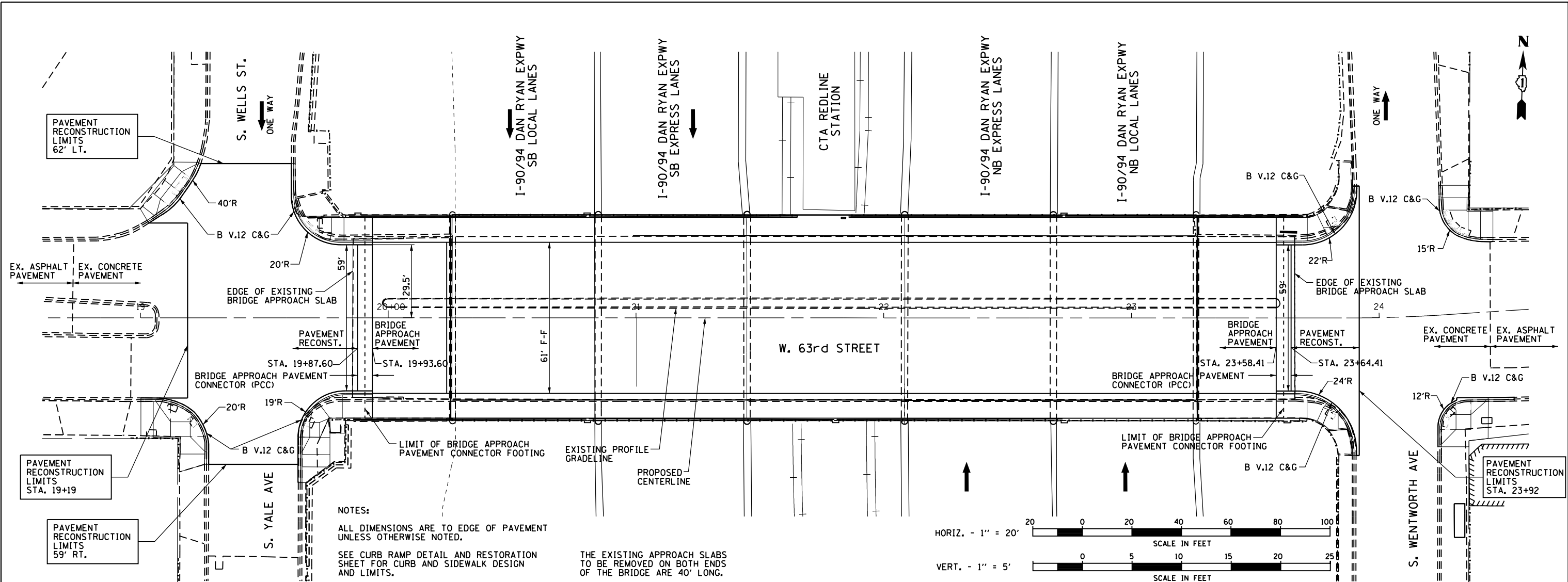
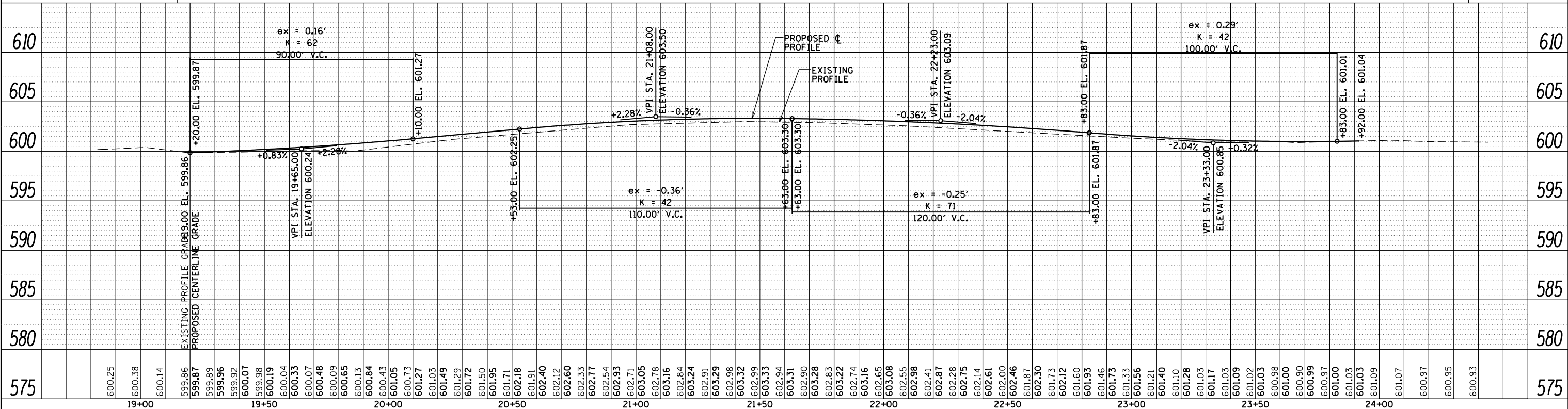
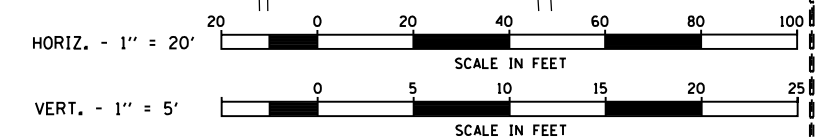


PLAN	SURVEYED	DATE
	PLOTTED	BY
	GRADES CHECKED	
	ALIGNMENT CHECKED	
	STRUCTURE NOTATIONS CHECKED	
	NOTE BOOK NO.	
	CADD FILE NAME	

PROFILE	SURVEYED	DATE
	PLOTTED	BY
	GRADES CHECKED	
	ALIGNMENT CHECKED	
	STRUCTURE NOTATIONS CHECKED	
	NOTE BOOK NO.	
	CADD FILE NAME	



NOTES:
 ALL DIMENSIONS ARE TO EDGE OF PAVEMENT UNLESS OTHERWISE NOTED.
 SEE CURB RAMP DETAIL AND RESTORATION SHEET FOR CURB AND SIDEWALK DESIGN AND LIMITS.
 THE EXISTING APPROACH SLABS TO BE REMOVED ON BOTH ENDS OF THE BRIDGE ARE 40' LONG.



FILE NAME = H:\Jobs2011\20113022\CAD\Site\dgn\00\0160_15-shr-plnpr f01.dgn	USER NAME = 0766	DESIGNED - JSO	REVISED -	STATE OF ILLINOIS DEPARTMENT OF TRANSPORTATION				63rd STREET BRIDGE REPLACEMENT PLAN & PROFILE				F.A. RTE. 94	SECTION 1920-B	COUNTY COOK	TOTAL SHEETS 117	SHEET NO. 16
PLOT SCALE = 40.0000' / in.	PLOT DATE = 3/29/2014	CHECKED - TNS	REVISED -	SCALE: 1"=20'				SCALE: 1"=20'	SHEET NO.	OF SHEETS	STA.	TO STA.	CONTRACT NO. 60J15			
		DATE -	REVISED -									ILLINOIS FED. AID PROJECT				