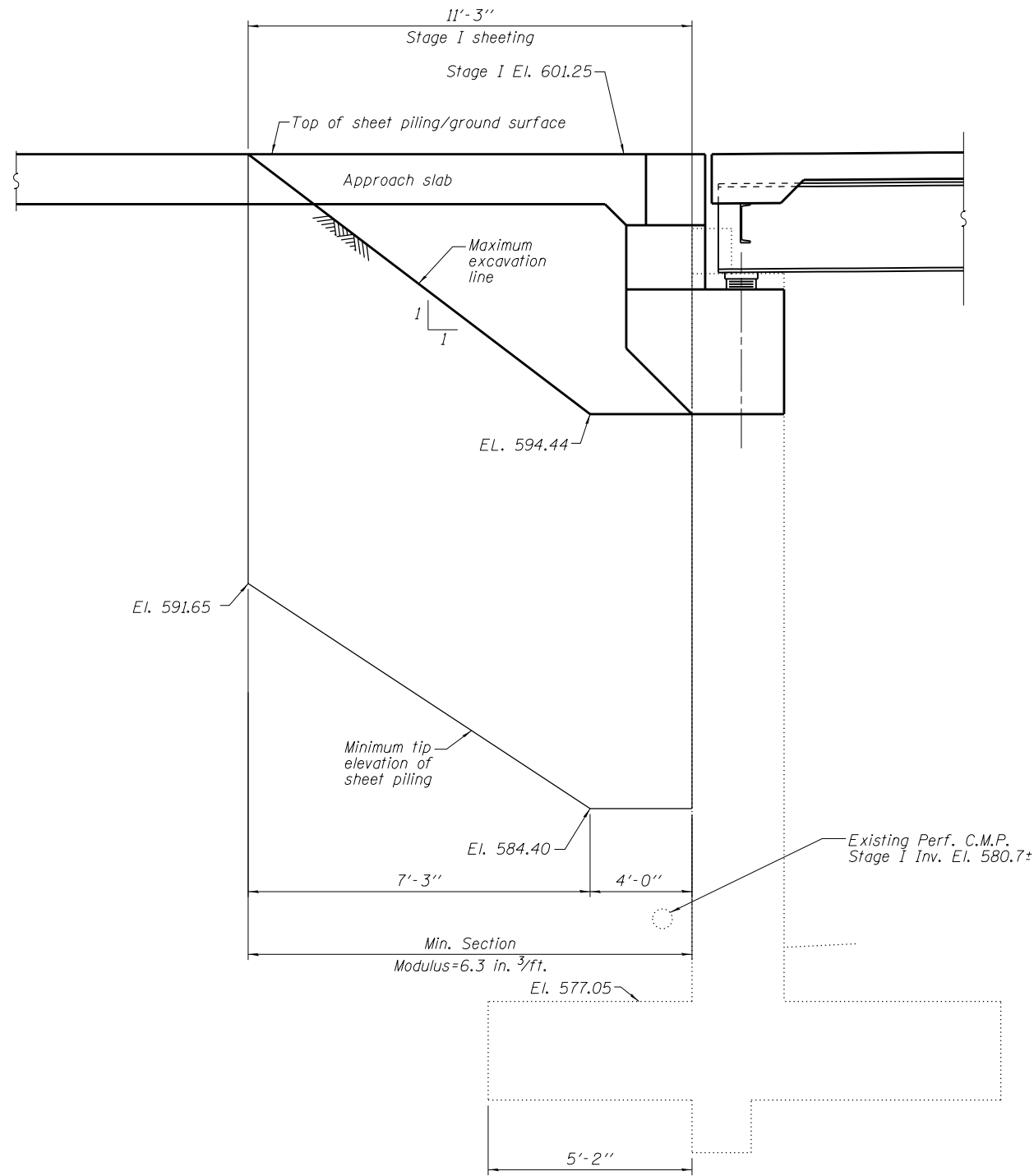
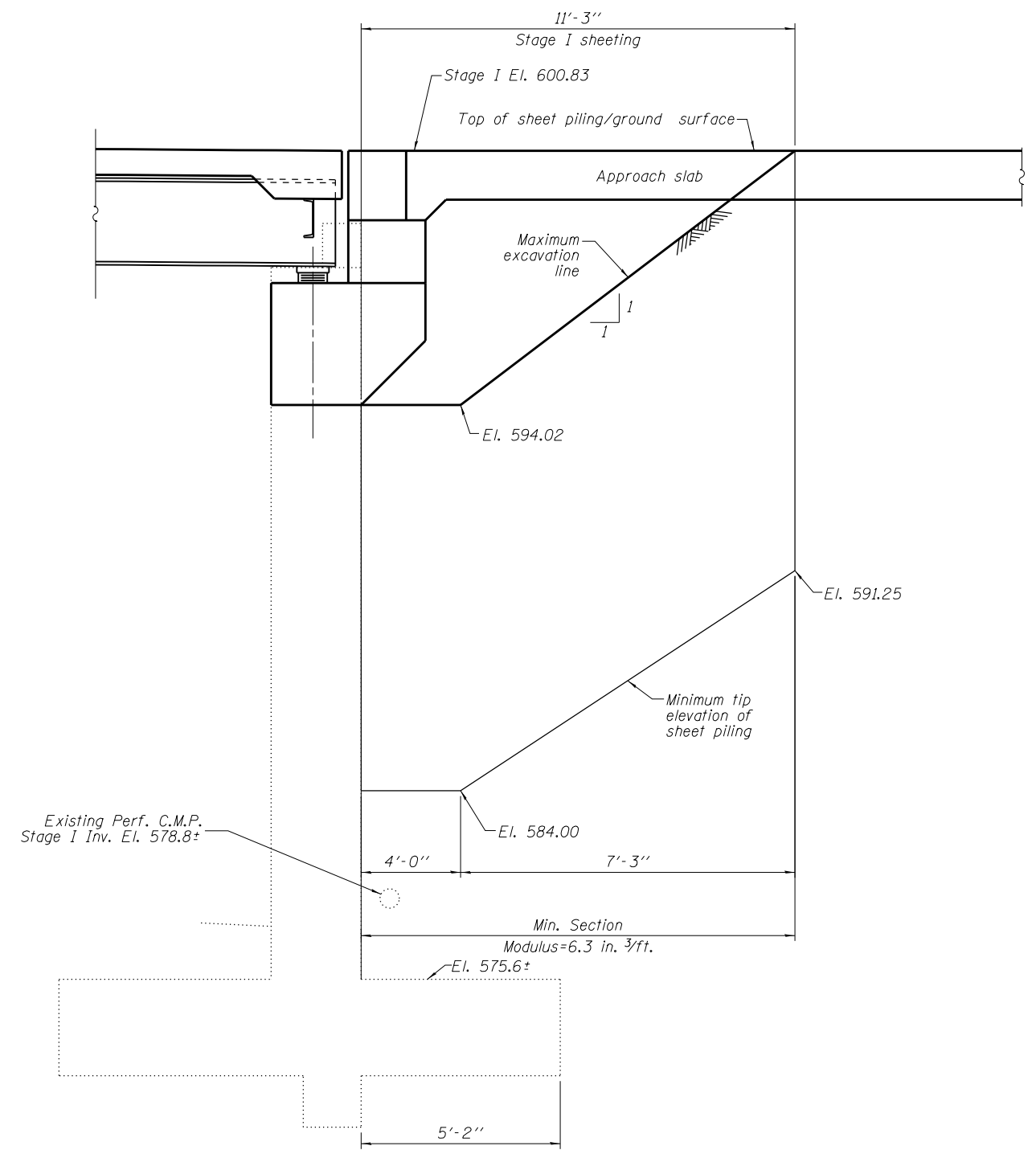


H:\projects\2014\20140223\CAD\Structural\dwg\06-1149-Final\06-1149-Final\06-1149-Final-temp-sht-piling.dgn  
 4/27/2014 4:56:08 PM



**ELEVATION VIEW OF TEMPORARY SHEET PILING  
LOOKING NORTH AT WEST ABUTMENT**



**ELEVATION VIEW OF TEMPORARY SHEET PILING  
LOOKING NORTH AT EAST ABUTMENT**

**BILL OF MATERIAL**

ITEM	UNIT	QUANTITY
Temporary Sheet Piling	Sq. Ft.	327

**NOTES**

- If the Contractor chooses to alter the temporary cantilevered sheet piling design requirements shown on the plans, a design submittal including plan details and calculations will be required for review and acceptance by the Engineer.
- The temporary sheet piling shall be installed prior to excavation in Stage I. Remove temporary sheet piling after backfilling in Stage II.

**GR&E**  
 8501 N. Higgins Road, Suite 280  
 Chicago, Illinois 60631; (773) 399-0112

USER NAME =	DESIGNED - J.Z.	REVISED -
CHECKED - J.A.Z.	REVISED -	
PLOT SCALE =	DRAWN - E.E.J.	REVISED -
PLOT DATE =	DATE - 3/31/2014	REVISED -

**STATE OF ILLINOIS  
DEPARTMENT OF TRANSPORTATION**

**TEMPORARY SHEET PILING  
STRUCTURE NO. 016-1149**

SHEET NO. 56 OF 50 SHEETS

F.A.I. RTE.	SECTION	COUNTY	TOTAL SHEETS	SHEET NO.
94	1920-B	COOK	142	70
CONTRACT NO. 60J15				
ILLINOIS FED. AID PROJECT				