

F.A.I. RTE.	SECTION	COUNTY	TOTAL SHEETS	SHEET NO.
55	99-IAC-2	WILL	102	1
		ILLINOIS	CONTRACT NO. 60P51	

SUBSURFACE UTILITY ENGINEERING (S.U.E.)  
UTILIZED ON THIS PROJECT

FOR INDEX OF SHEETS, SEE SHEET NO. 2

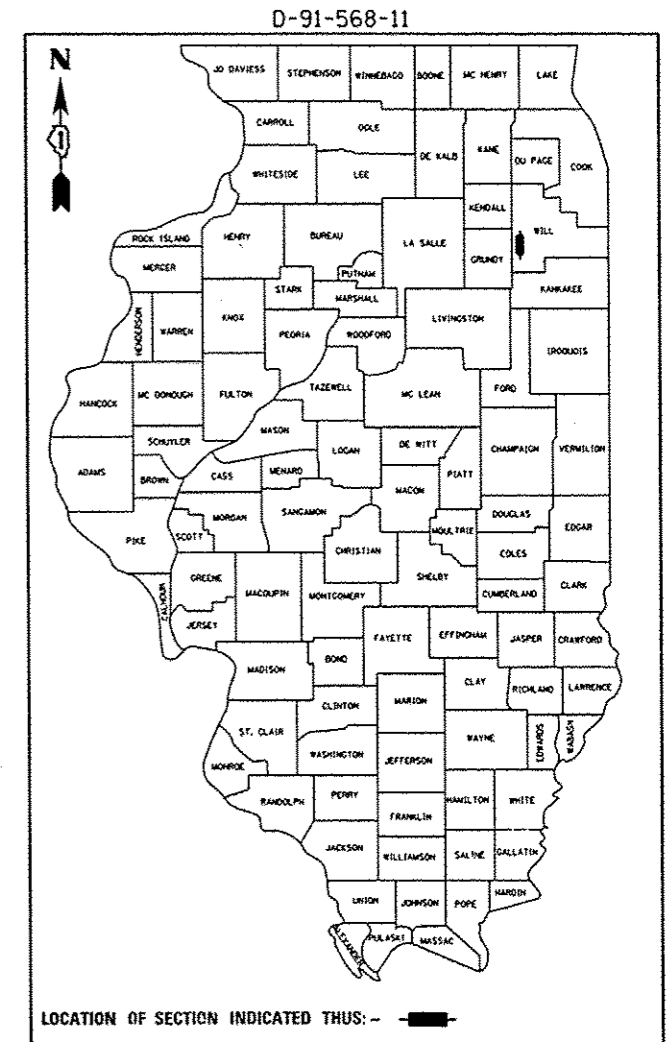
PROJECT IS LOCATED IN UNINCORPORATED WILL COUNTY

STATE OF ILLINOIS  
DEPARTMENT OF TRANSPORTATION  
DIVISION OF HIGHWAYS

**PROPOSED  
HIGHWAY PLANS**

*FAU 4301 (FAI 55-1-55 E. FRONTAGE RD.)*  
SECTION 99-IAC-2  
I-55 AT ARSENAL ROAD INTERCHANGE  
NORTHBOUND FRONTAGE ROAD  
RECONSTRUCTION AND WIDENING  
PROJECT: *ACM-4301 (001)*  
WILL COUNTY  
C-91-568-11

DESIGN DESIGNATION:  
ADT 35,900(10) STRATEGIC REGIONAL ARTERIAL (SRA) 22.47 (JPCP-20)  
CLASS I TRUCK ROUTE  
DESIGN SPEED: 50 MPH



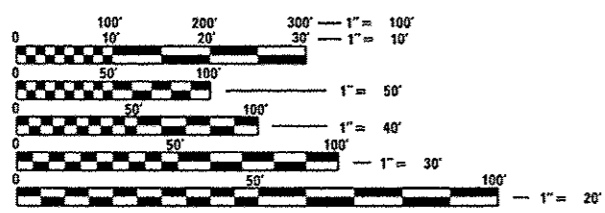
**SA STRAND ASSOCIATES**  
1170 SOUTH HOBOLT ROAD  
JOLIET, ILLINOIS 60431  
(815) 744-4200  
IDFPR NO. 184-001273

STATE OF ILLINOIS  
DEPARTMENT OF TRANSPORTATION  
DIVISION OF HIGHWAYS

SUBMITTED 9/24/13 2013 ✓  
*John Frank*  
DEPUTY DIRECTOR OF HIGHWAYS, REGION ENGINEER

May 9 2014  
*John D. Baranzoni, P.E.*  
ENGINEER OF DESIGN AND ENVIRONMENT

May 9 2014  
*Omer Osman, P.E.*  
DIRECTOR OF HIGHWAYS, CHIEF ENGINEER

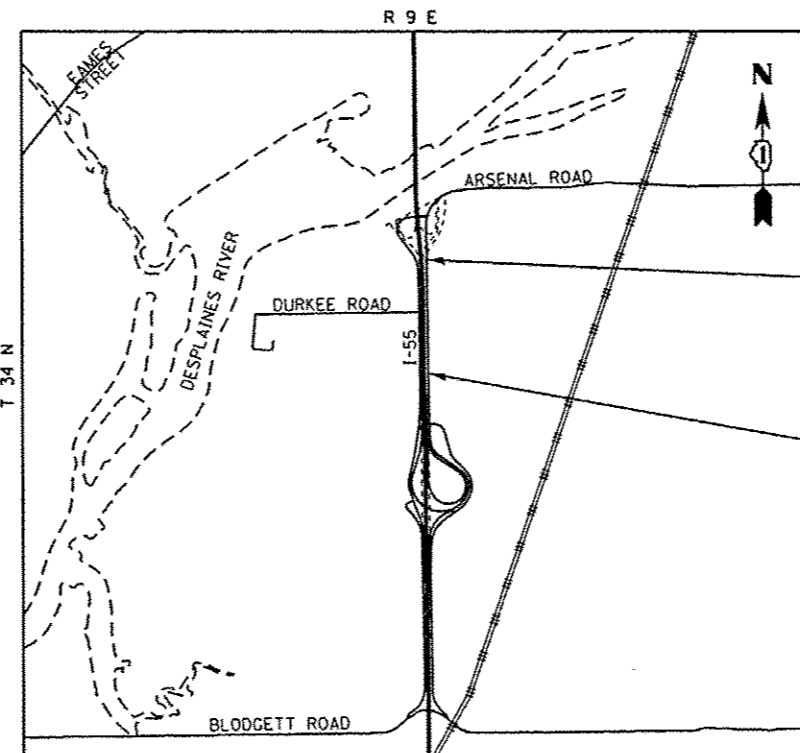


FULL SIZE PLANS HAVE BEEN PREPARED USING STANDARD ENGINEERING SCALES. REDUCED SIZED PLANS WILL NOT CONFORM TO STANDARD SCALES. IN MAKING MEASUREMENTS ON REDUCED PLANS, THE ABOVE SCALES MAY BE USED.

J.U.L.I.E.  
JOINT UTILITY LOCATION INFORMATION FOR EXCAVATION  
1-800-892-0123  
OR 811

PROJECT MANAGER: HELEN PAZON, P.E. (IDOT) (847) 705-4523

CONTRACT NO. 60P51



LOCATION MAP  
SCALE = 1:2400

LENGTH OF PROJECT  
ARSENAL ROAD = 3,252.95 FT = 0.616 MI  
GROSS AND NET LENGTH = 3,252.95 FT = 0.616 MI

END IMPROVEMENT  
STA 952+75.00 @ ARSENAL RD

BEGIN IMPROVEMENT  
STA 920+22.05 @ ARSENAL ROAD

*Marc A. Grigas*  
MARC A. GRIGAS, P.E.

PRINTED BY THE AUTHORITY  
OF THE STATE OF ILLINOIS

9/19/2013 10:16:37 AM S:\\_M\16300-6899\6346\04\SV\Tcr05\CA00\_Sheet\51\60P51-SMT-COVER01.dgn