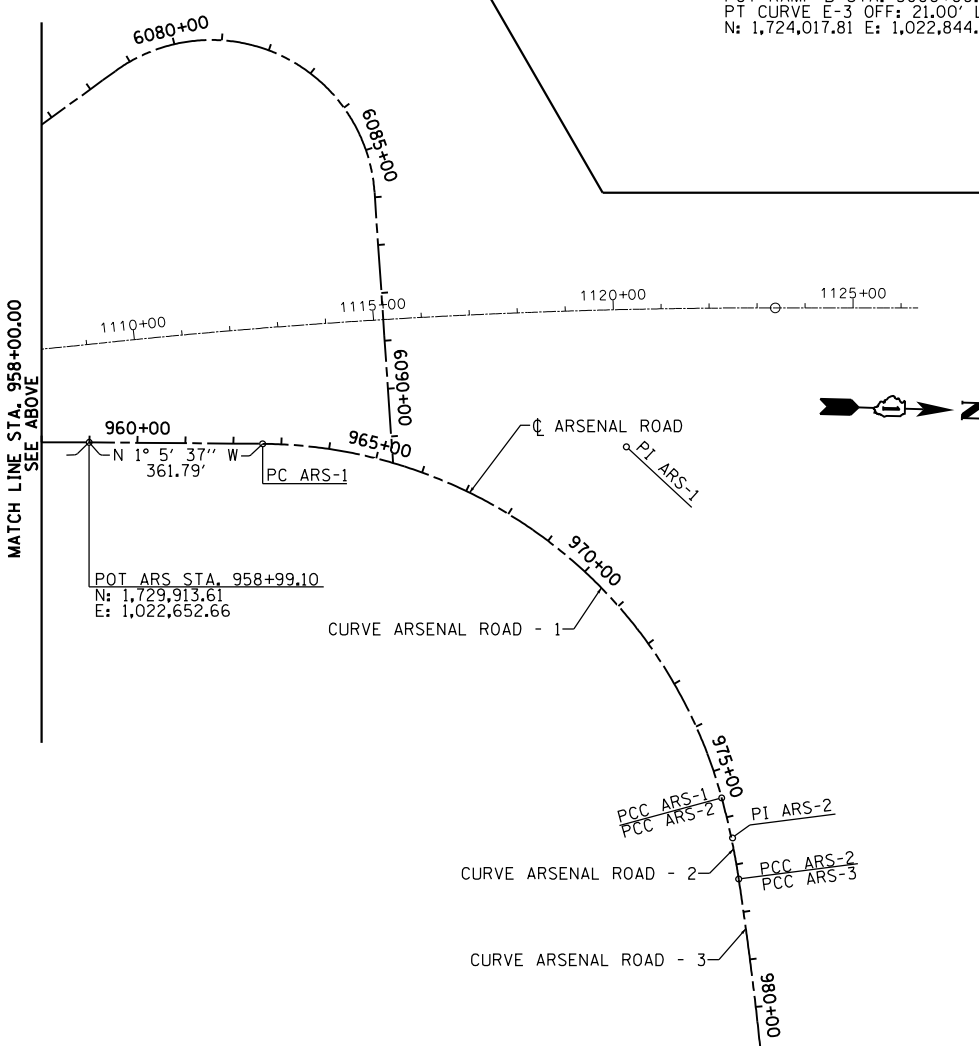


COORDINATE INFORMATION
 ARSENAL ROAD
 POT ARS STA. 900+00.00 =
 POT RAMP B STA. 3000+00.00 OFF: 21.00' L =
 PT CURVE E-3 OFF: 21.00' L =
 N: 1,724,017.81 E: 1,022,844.49



CURVE ARSENAL ROAD - 1

P.I. STATION 970+18.91 N 1,731,033.21 E 1,022,631.29
 DELTA = 74° 19' 32" (RT)
 DEGREE = 5° 43' 46"
 RADIUS = 1,000.00'
 TANGENT = 758.02'
 LENGTH = 1297.22'
 EXTERNAL = 254.83'
 LONG CHORD = 1,208.16'
 MID. ORD. = 203.08'
 S.E. RATE = 4.00%
 S.E. IN = STA. 960+85.89 TO STA. 963+10.89
 P.C. STATION 962+60.89 N 1,730,275.33 E 1,022,645.76
 P.C.C. STATION 975+58.12 N 1,731,251.89 E 1,023,357.08

CURVE ARSENAL ROAD - 3

P.I. STATION 983+29.24 N 1,731,397.07 E 1,024,114.08
 DELTA = 8° 33' 11" (RT)
 DEGREE = 0° 42' 58"
 RADIUS = 8,000.00'
 TANGENT = 598.23'
 LENGTH = 1,194.23'
 EXTERNAL = 22.34'
 LONG CHORD = 1,193.12'
 MID. ORD. = 22.27'
 P.C.C. STATION 977+31.01 N 1,731,292.06 E 1,023,525.14
 P.T. STATION 989+25.24 N 1,731,413.33 E 1,024,712.09

CURVE ARSENAL ROAD - 2

P.I. STATION 976+44.66 N 1,731,276.86 E 1,023,439.94
 DELTA = 6° 39' 28" (RT)
 DEGREE = 3° 51' 02"
 RADIUS = 1,487.94'
 TANGENT = 86.55'
 LENGTH = 172.90'
 EXTERNAL = 2.51'
 LONG CHORD = 172.80'
 MID. ORD. = 2.51'
 S.E. RATE = 4.00%
 P.C.C. STATION 975+58.12 N 1,731,251.89 E 1,023,357.08
 P.C.C. STATION 977+31.01 N 1,731,292.06 E 1,023,525.14

FILE NAME = S:\JUL16300-6399\6346\045\Micro\CAD Sheets\0168P51-SHT-ATB01.dwg



1170 SOUTH HOUBOLT ROAD JOLIET, ILLINOIS 60431 (815) 744-4200	USER NAME = dennisw MODEL NAME = Default PLOT SCALE = 400.0000' / in. PLOT DATE = 2/18/2014	DESIGNED - MAG DRAWN - JKP/DJW CHECKED - BMA DATE - 12-5-12	REVISED - REVISED - REVISED - REVISED -
---	--	--	--

**STATE OF ILLINOIS
DEPARTMENT OF TRANSPORTATION**

ALIGNMENTS, TIES, AND BENCHMARKS

SCALE: 1"=200' SHEET 1 OF 3 SHEETS STA. TO STA.

F.A.I. RTE.	SECTION	COUNTY	TOTAL SHEETS	SHEET NO.
55	99-IAC-2	WILL	102	16
CONTRACT NO. 60P51				ILLINOIS FED. AID PROJECT