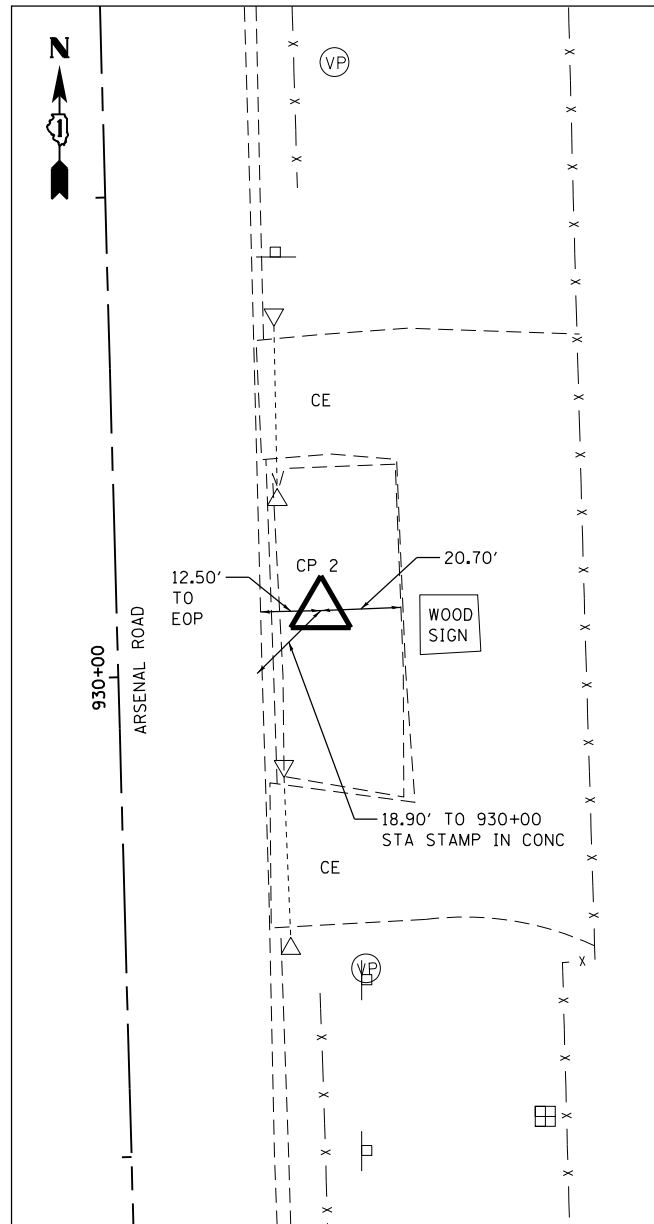
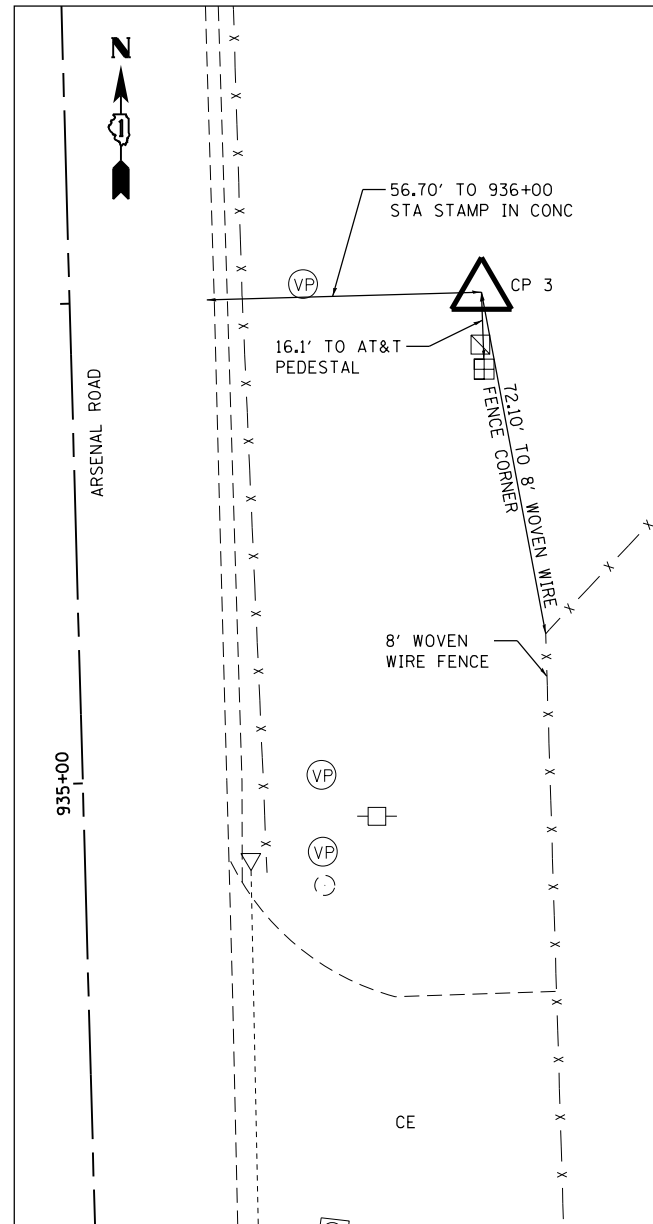


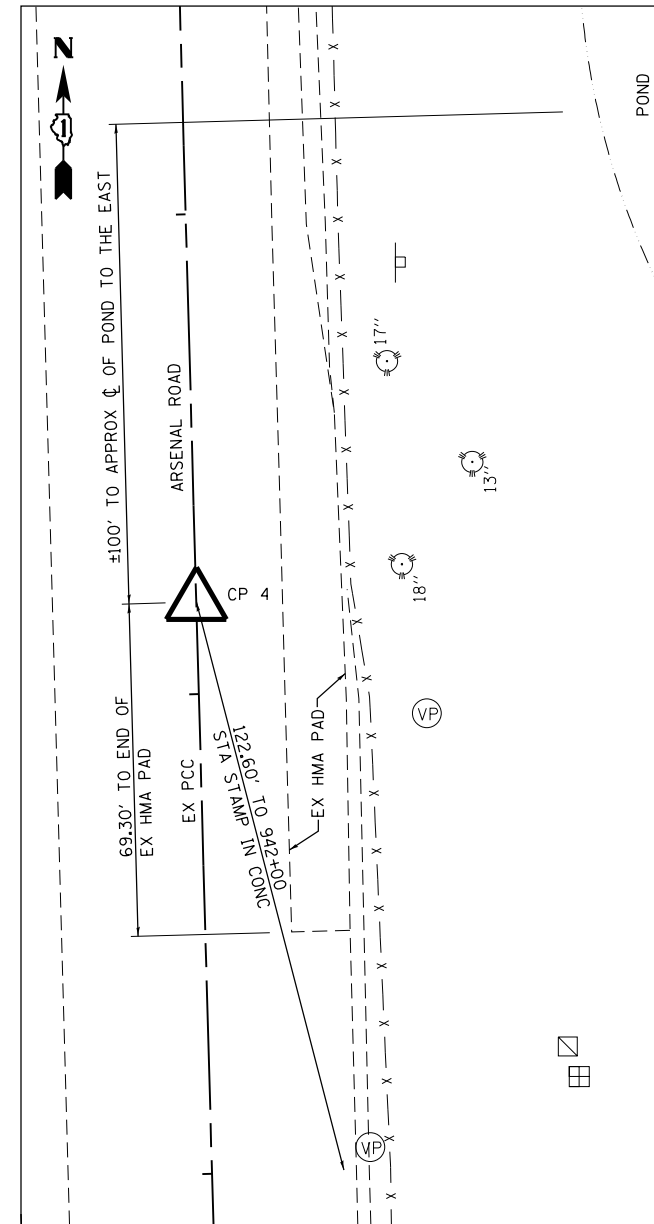
CP 1
 CUT CROSS IN CONCRETE
 N 1,726,034.3305
 E 1,022,797.4993
 STA 920+17.31
 OFF 38.21' RT
 ELEV 542.251



CP 2
 SET 5/8" REBAR W/ CAP
 N 1,727,029.5188
 E 1,022,774.4858
 STA 930+12.76
 OFF 42.55' RT
 ELEV 544.261



CP 3
 FOUND EX CAPPED IRON
 N 1,727,617.7739
 E 1,022,801.6680
 STA 936+00.05
 OFF 85.88' RT
 ELEV 552.977



CP 4
 CUT CROSS ON CONCRETE
 N 1,728,334.2628
 E 1,022,696.0838
 STA 943+19.17
 OFF 0.02' RT
 ELEV 556.273

BENCHMARKS

SITE BENCHMARK NO. 1 ELEVATION = 551.180
 SET CUT CROSS ON TOP OF SW'LY BOLT OF FOUNDATION FOR THE 1st LIGHT POLE E. OF E. FRONTAGE ROAD ON THE N. SIDE OF MOBIL EXXON MAIN ENTRANCE. STA: 950+92.50 108.77' RT.±

SITE BENCHMARK NO. 2 ELEVATION = 555.396
 SET CUT SQUARE ON THE EDGE OF CONCRETE PAVEMENT ADJACENT TO STATION STAMP 942+00 ON E. SIDE OF E. FRONTAGE ROAD/(NEW ARSENAL ROAD), STA: 942+00 29.74' RT.±

SITE BENCHMARK NO. 3 ELEVATION = 547.556
 SET CUT SQUARE ON THE EDGE OF CONCRETE PAVEMENT ADJACENT TO STATION STAMP 936+00 ON E. SIDE OF E. FRONTAGE ROAD/(NEW ARSENAL ROAD), STA: 936+00 29.72' RT.±

SITE BENCHMARK NO. 4 ELEVATION = 543.484
 SET CUT SQUARE ON THE SW. CORNER OF CONCRETE FOUNDATION FOR THE S'LY OF 4 SIGN POSTS LOCATED 20'± E. OF CONTROL POINT NO. 2 AT A MOBIL EXXON ENTRANCE WITH GATES. STA: 930+03 62.75' RT.±

SITE BENCHMARK NO. 5 ELEVATION = 542.445
 FOUND RR. SPIKE IN W'LY FACE OF NEW WOOD UTILITY POLE ON S. SIDE OF A GRAVEL ROAD ON THE E. SIDE OF THE E. FRONTAGE ROAD/(NEW ARSENAL ROAD) @ STA: 920+95 81.00' RT.±

NOTES:

- COORDINATES SHOWN HEREON ARE GROUND COORDINATES BASED ON NGS PID AE2474 (DYNASTY CONTROL POINT NO. 231). FOR SCALE CONVERSION FROM GRID TO GROUND USE COMBINED SCALE FACTOR 0.99995548
- ELEVATIONS SHOWN HEREON ARE BASED ON DYNASTY CONTROL POINT NO. 231 NGS MON. AE2474. ELEVATION = 552.156

FILE NAME = S:\J01\63300-63999\6346\045\Micro\CAAD Sheets\01680P51-SHT-ATB02.dgn



USER NAME = dennissw	DESIGNED - MAG	REVISED -
MODEL NAME = Default	DRAWN - JKP/DJW	REVISED -
PLOT SCALE = 40.0000' / in.	CHECKED - BMA	REVISED -
PLOT DATE = 2/18/2014	DATE - 12-5-12	REVISED -

**STATE OF ILLINOIS
 DEPARTMENT OF TRANSPORTATION**

ALIGNMENTS, TIES, AND BENCHMARKS

SCALE: 1"=20' SHEET 2 OF 3 SHEETS STA. TO STA.

F.A.I. RTE.	SECTION	COUNTY	TOTAL SHEETS	SHEET NO.
55	99-IAC-2	WILL	102	17
CONTRACT NO. 60P51				
ILLINOIS FED. AID PROJECT				