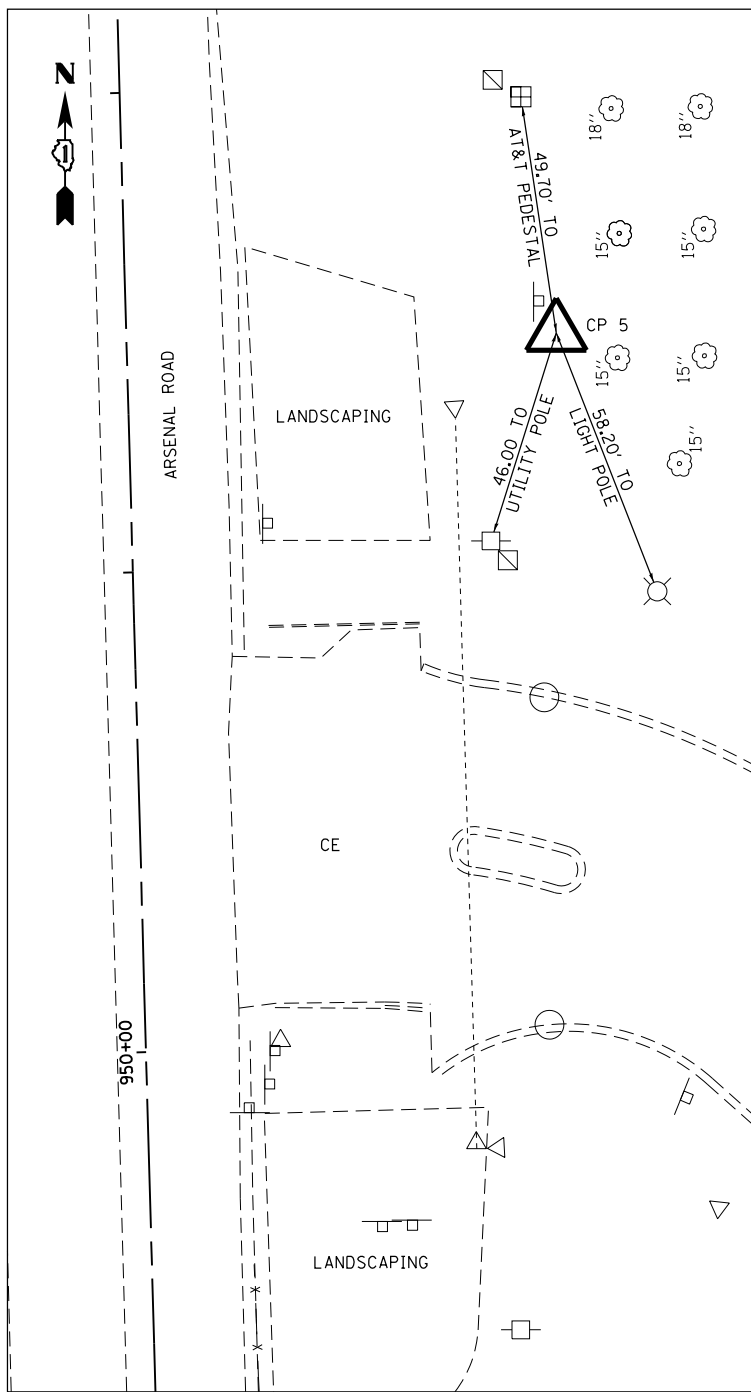


FILE NAME = S:\JOL\63300-6399\6346\045\Micro\CAAD Sheets\01680P51-SHT-ATB03.dgn



CP 5  
 FOUND CAPPED IRON PIPE  
 N 1,729,164.7436  
 E 1,022,762.8741  
 STA 951+47.50  
 OFF 89.60' RT  
 ELEV 553.486



USER NAME = dennisw	DESIGNED - MAG	REVISED -
MODEL NAME = Default	DRAWN - JKP/DJW	REVISED -
PLOT SCALE = 40.0000' / in.	CHECKED - BMA	REVISED -
PLOT DATE = 2/18/2014	DATE - 12-5-12	REVISED -

**STATE OF ILLINOIS  
 DEPARTMENT OF TRANSPORTATION**

**ALIGNMENTS, TIES, AND BENCHMARKS**

SCALE: 1"=20' SHEET 3 OF 3 SHEETS STA. TO STA.

F.A.I. RTE.	SECTION	COUNTY	TOTAL SHEETS	SHEET NO.
55	99-IAC-2	WILL	102	18
CONTRACT NO. 60P51			ILLINOIS FED. AID PROJECT	