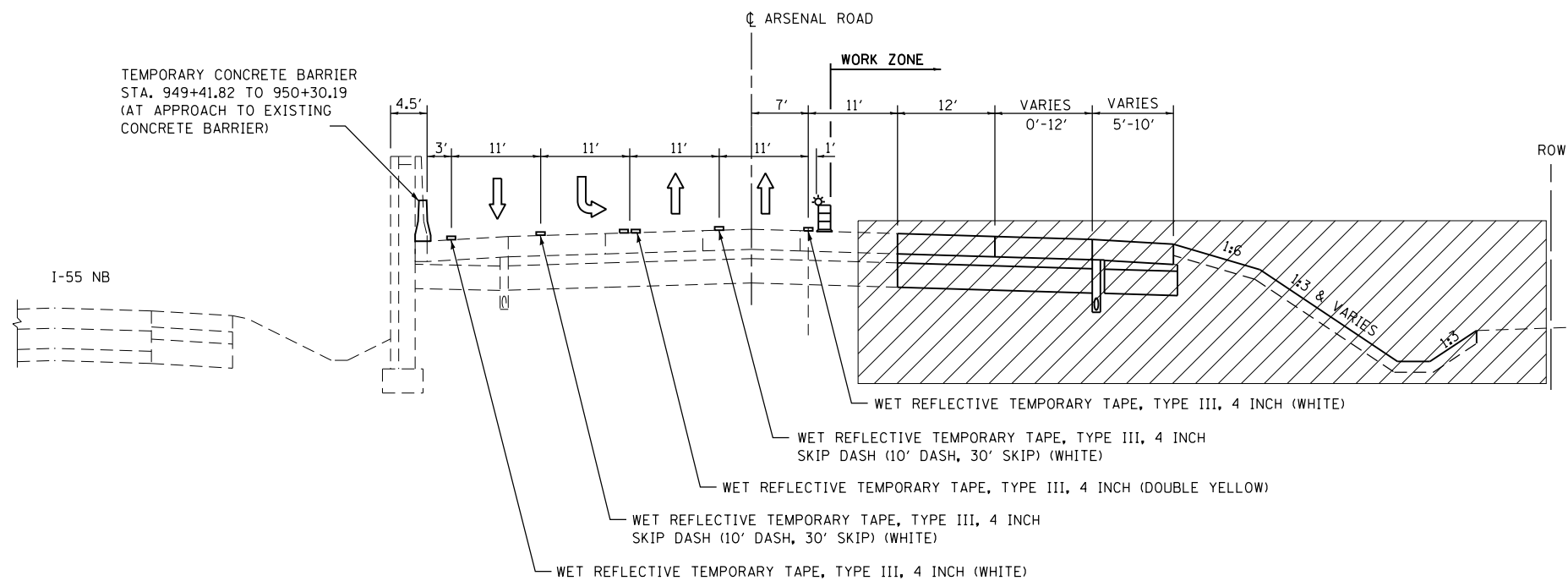
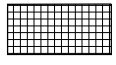

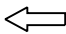


ARSENAL ROAD TYPICAL SECTION - STAGE 1A & 1B  
STA. 916+22 TO 941+50



ARSENAL ROAD TYPICAL SECTION - STAGE 1A & 1B  
STA. 941+50 TO 962+29

**LEGEND**

-  TEMPORARY PAVEMENT (8" FULL-DEPTH HMA OR 8" PCC)
-  CONSTRUCTION THIS STAGE
-  TRAFFIC FLOW DIRECTION

FILE NAME = SA\JOL\6300-6399\6346\045\Micro\CAD\ Sheets\0168\PS1-SHT-STAGING-TYP-1.dgn



1170 SOUTH HOUBOLT ROAD  
JOLIET, ILLINOIS 60431  
(815) 744-4200

USER NAME = dennisw	DESIGNED - MAG	REVISED -
MODEL NAME = Default	DRAWN - JKP/DJW	REVISED -
PLOT SCALE = 20.0000' / in.	CHECKED - BMA	REVISED -
PLOT DATE = 2/18/2014	DATE - 12-5-12	REVISED -

**STATE OF ILLINOIS  
DEPARTMENT OF TRANSPORTATION**

**MAINTENANCE OF TRAFFIC TYPICAL SECTIONS**

SCALE: NONE    SHEET 2 OF 3 SHEETS    STA.    TO STA.

F.A.I. RTE.	SECTION	COUNTY	TOTAL SHEETS	SHEET NO.
55	99-IAC-2	WILL	102	28
CONTRACT NO. 60P51				
ILLINOIS FED. AID PROJECT				