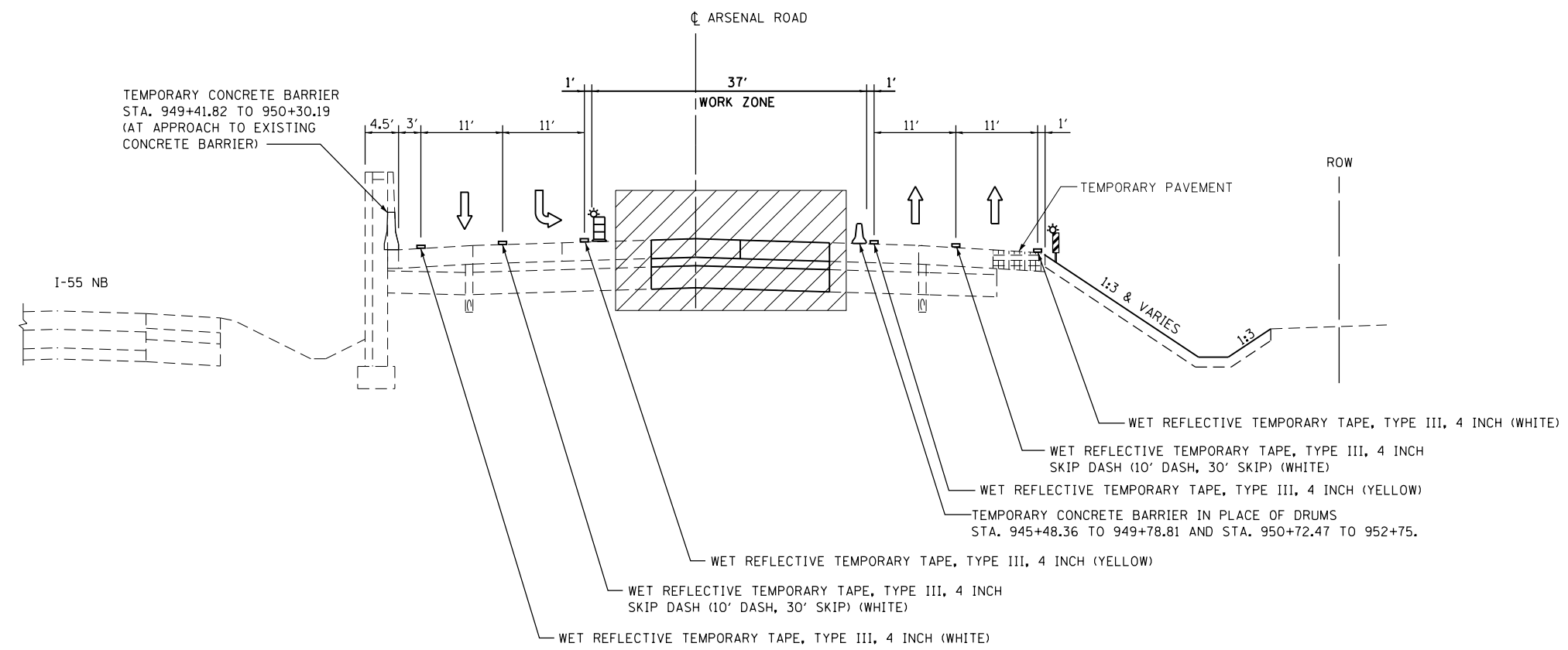
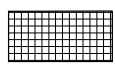
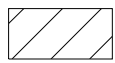
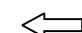


**STAGE 1 TEMPORARY WIDENING**  
 STA. 944+73.10 TO STA. 946+83.36  
 STA. 950+88.04 TO STA. 954+53.37



**ARSENAL ROAD TYPICAL SECTION - STAGE 2 (LOOKING NORTH)**  
 STA. 942+00 TO 962+00

**LEGEND**

-  TEMPORARY PAVEMENT (8" FULL-DEPTH HMA OR 8" PCC)
-  CONSTRUCTION THIS STAGE
-  TRAFFIC FLOW DIRECTION

FILE NAME = SA\JOL\6300-6399\6346-045\Micro\CAD\ Sheets\0168\PS1-SHT-STAGING-TYP-2.dgn



USER NAME = dennisw	DESIGNED - MAG	REVISED -
MODEL NAME = Default	DRAWN - JKP/DJW	REVISED -
PLOT SCALE = 20.0000' / in.	CHECKED - BMA	REVISED -
PLOT DATE = 2/18/2014	DATE - 12-5-12	REVISED -

**STATE OF ILLINOIS  
 DEPARTMENT OF TRANSPORTATION**

**MAINTENANCE OF TRAFFIC TYPICAL SECTIONS**  
 SCALE: NONE SHEET 3 OF 3 SHEETS STA. TO STA.

F.A.I. RTE.	SECTION	COUNTY	TOTAL SHEETS	SHEET NO.
55	99-IAC-2	WILL	102	29
CONTRACT NO. 60P51			ILLINOIS FED. AID PROJECT	