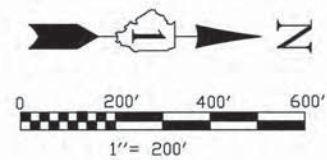


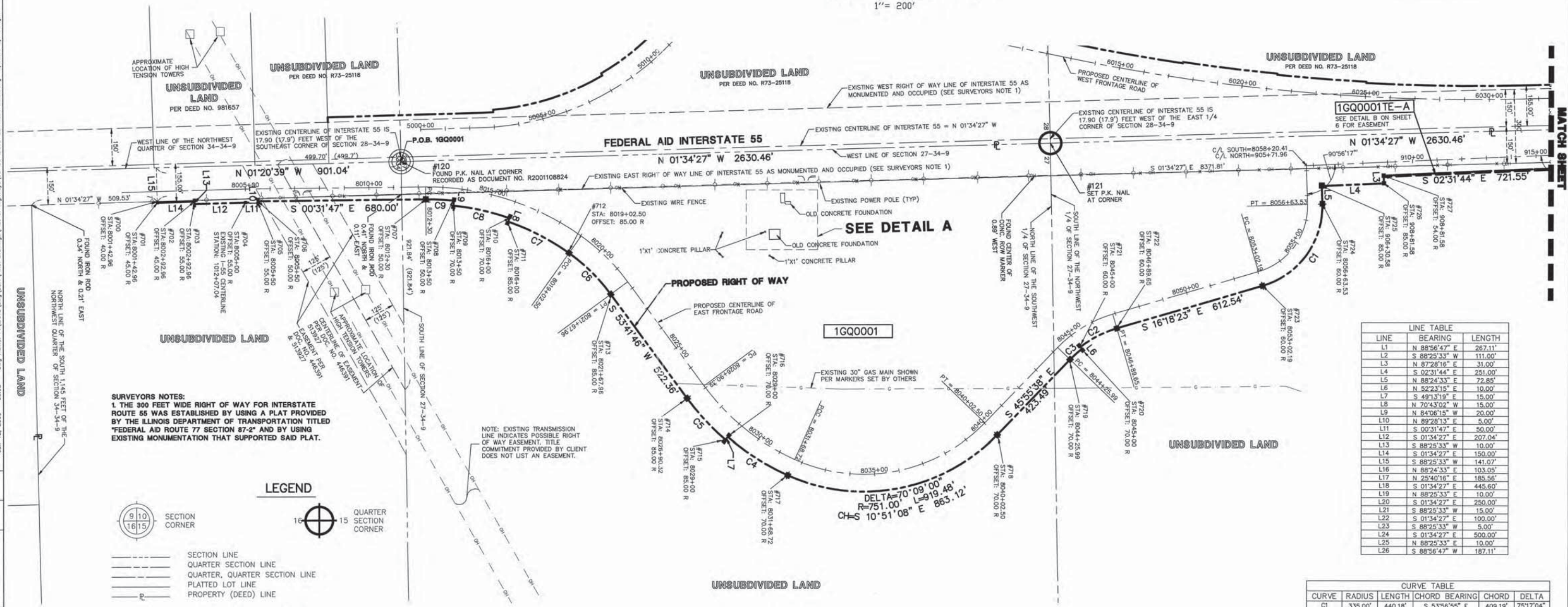
**PART OF SECS. 15, 22, 23, 27 & 34, T34N, R9E OF THE 3RD P.M., WILL COUNTY, ILLINOIS**

PARCEL No.	OWNER	TOTAL HOLDINGS (ACRES)	PART TAKEN (ACRES)	PREVIOUSLY DEDICATED (ACRES)	REMAINDER (ACRES)	EASEMENT AREA (ACRES)	PERMANENT INDEX NUMBER	PURPOSE OF EASEMENT	ACQUIRED BY
1GQ0001	MOBIL OIL CORPORATION	501.711	81.014	17.890	420.697	N/A	10-27-100-006	N/A	
1GQ0001E-A						0.085		TEMPORARY	



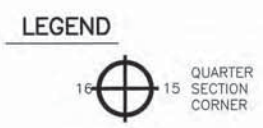
BEARINGS SHOWN HEREON ARE BASED ON ILLINOIS STATE PLANE COORDINATES, EAST ZONE, NORTH AMERICAN DATUM OF 1983. NGS CONTROL POINT PID AE2474 WAS RECOVERED AND USED FOR CONVERSIONS. ALL COORDINATE AND DIMENSIONAL VALUES SHOWN HEREON ARE "GROUND" NOT "GRID".  
COMBINED SCALE FACTOR (GROUND TO GRID) = 0.99995548

F.A.P. RTE.	SECTION	COUNTY	TOTAL SHEETS	SHEET NO.
55	ARSENAL RD.	WILL	17	5
STA. 800+42.96		STA. 8058+37.60		
STA. 905+72.10		STA. 915+00.00		
FED. ROAD DIST. NO. 1	ILLINOIS	FED. AID PROJECT		



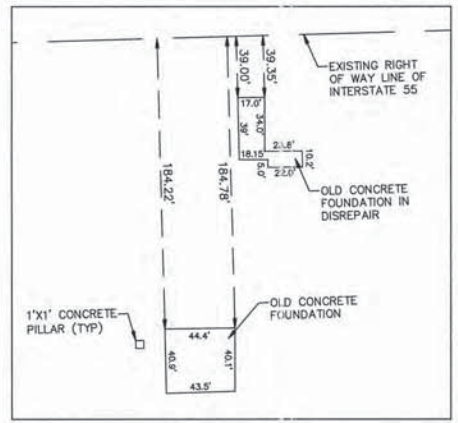
**SURVEYORS NOTES:**  
1. THE 300 FEET WIDE RIGHT OF WAY FOR INTERSTATE ROUTE 55 WAS ESTABLISHED BY USING A PLAT PROVIDED BY THE ILLINOIS DEPARTMENT OF TRANSPORTATION TITLED "FEDERAL AID ROUTE 77 SECTION 87-2" AND BY USING EXISTING MONUMENTATION THAT SUPPORTED SAID PLAT.

NOTE: EXISTING TRANSMISSION LINE INDICATES POSSIBLE RIGHT OF WAY EASEMENT. TITLE COMMITMENT PROVIDED BY CLIENT DOES NOT LIST AN EASEMENT.



LINE	BEARING	LENGTH
L1	N 88°56'47" E	267.11'
L2	S 88°25'33" W	111.00'
L3	N 87°21'46" E	31.00'
L4	S 02°31'44" E	251.00'
L5	N 88°24'33" E	72.85'
L6	N 52°23'15" E	10.00'
L7	S 49°13'19" E	15.00'
L8	N 70°43'02" W	15.00'
L9	N 84°06'15" W	20.00'
L10	N 89°28'13" E	5.00'
L11	S 00°31'47" E	50.00'
L12	S 01°34'27" E	207.04'
L13	S 88°25'33" W	10.00'
L14	S 01°34'27" E	150.00'
L15	S 88°25'33" W	141.07'
L16	N 88°24'33" E	103.05'
L17	N 25°40'18" E	185.56'
L18	S 01°34'27" E	445.60'
L19	N 88°25'33" E	10.00'
L20	S 01°34'27" E	250.00'
L21	S 88°25'33" W	15.00'
L22	S 01°34'27" E	100.00'
L23	S 88°25'33" W	5.00'
L24	S 01°34'27" E	500.00'
L25	N 88°25'33" E	10.00'
L26	S 88°56'47" W	187.11'

CURVE	RADIUS	LENGTH	CHORD BEARING	CHORD	DELTA
C1	335.00'	440.18'	S 53°56'55" E	409.19'	75°17'04"
C2	450.00'	167.34'	S 26°57'34" E	166.38'	21°18'22"
C3	440.00'	63.85'	S 41°46'11" E	63.80'	8°18'53"
C4	1000.00'	288.95'	S 32°30'02" W	287.94'	16°33'19"
C5	1015.00'	228.84'	S 47°14'14" W	228.36'	12°55'05"
C6	750.00'	238.44'	S 44°35'19" W	237.43'	18°12'55"
C7	985.00'	278.47'	S 27°22'55" W	277.54'	16°11'53"
C8	1000.00'	233.64'	S 12°35'22" W	233.11'	13°23'13"
C9	1020.00'	114.39'	S 02°40'59" W	114.33'	6°25'33"



**DETAIL A**  
SCALE: 1" = 60'

STATE OF ILLINOIS)  
)SS  
COUNTY OF DuPAGE)

I, WILLIAM W. WRIGHT, DO HEREBY DECLARE THAT I HAVE SURVEYED THE PLAT OF HIGHWAYS SHOWN HEREON IN SECTIONS 22, 27, 28 AND 34, TOWNSHIP 34 NORTH RANGE 9, EAST OF THE THIRD PRINCIPAL MERIDIAN, WILL COUNTY, ILLINOIS; THAT THE SURVEY IS TRUE AND COMPLETE AS SHOWN TO THE BEST OF MY KNOWLEDGE AND BELIEF; THAT THE PLAT CORRECTLY REPRESENTS SAID SURVEY; THAT ALL MONUMENTS FOUND AND ESTABLISHED ARE OF PERMANENT QUALITY AND OCCUPY THE POSITIONS SHOWN THEREON AND THAT THE MONUMENTS ARE SUFFICIENT TO ENABLE THE SURVEY TO BE RETRACED. MADE FOR THE DEPARTMENT OF TRANSPORTATION, STATE OF ILLINOIS.

DATED AT LOMBARD, ILLINOIS THIS \_\_\_\_\_ DAY OF \_\_\_\_\_, A.D., 2009.

**FOR REVIEW ONLY**

ILLINOIS PROFESSIONAL LAND SURVEYOR NO. 3502  
LICENSE EXPIRES NOVEMBER 30, 2010

DESIGN FIRM LICENSE NO. 184003350  
LICENSE EXPIRES APRIL 30, 2011



REVISION DATE	DESCRIPTION	INITIALS
06/08/09	REVISED PER IN-HOUSE REVIEW/ADDED EASEMENT 446391	MAC/WWW
05/11/09	REVISED PER IN-HOUSE REVIEW	WWW
12/12/08	REVISED PARCEL 1GQ0001 & 1GQ0001E-A	WWW
12/08/08	REVISED PER I.D.O.T. REVIEW	MAC/WWW
11/21/08	REVISED PER I.D.O.T. REVIEW	MAC/WWW
01/24/08	REVISED PER I.D.O.T. REVIEW	MAC/WWW
01/22/08	REVISED PER I.D.O.T. REVIEW	MAC/WWW
REVISION DATE	DESCRIPTION	INITIALS

RECORDING: RECORDED ON

RECEIVED  
JUN 14 2009  
PLATS & LEGALS  
IDOTB SB - 070951 SHEET 1 IS A COVER SHEET AND IS NOT RECORDED

**Manhard CONSULTING LTD.**  
3502 Newland, Suite 100, Lombard, IL 60148  
Civil Engineers - Surveyors - Water Resource Engineers - Water & Wastewater Engineers  
Construction Managers - Environmental Scientists - Landscape Architects - Planners

**PLAT OF HIGHWAYS**  
STATE OF ILLINOIS  
DEPARTMENT OF TRANSPORTATION  
F.A.I. ROUTE 55

SECTION: AT ARSENAL ROAD WILL COUNTY  
PROJECT JOB NO. R-91-014-02  
STATION 8005+00.00 TO STATION 8058+37.60  
STATION 905+72.10 TO STATION 915+00.00  
SCALE: 1" = 200' SHEET 5 OF 17

BUREAU OF LAND ACQUISITION  
201 WEST CENTER COURT  
SCHAUMBURG, ILLINOIS 60196  
AS DOCUMENT NO.

Jun 12, 2009 - 08:02 Dwg Name: P:\DOTB\Drawings\Plot of Highways\05-06 IDOTB-SB-Mobil Detail.dwg Updated By: barrigt  
 1"=200'  
 CHECKED  
 DRAWN  
 NO.