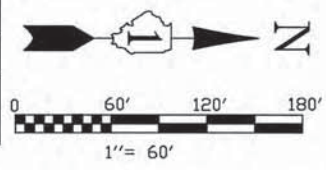


PART OF SEC. 21, 22, T34N, R9E OF THE 3RD P.M., WILL COUNTY, ILLINOIS

PARCEL No.	OWNER	TOTAL HOLDINGS (ACRES)	PART TAKEN (ACRES)	PREVIOUSLY DEDICATED (ACRES)	REMAINDER (ACRES)	EASEMENT AREA (ACRES)	PERMANENT INDEX NUMBER	PURPOSE OF EASEMENT	ACQUIRED BY
1GQ0003TE-C	MOBILE JOUJET REFINING CORPORATION	734.148	N/A	N/A	N/A	0.444	10-22-100-006	TEMPORARY	
1GQ0005TE-A	INEOS NOVA, LLC A DELAWARE LIMITED LIABILITY COMPANY	118.746	N/A	N/A	N/A	0.035	10-21-200-005	TEMPORARY	

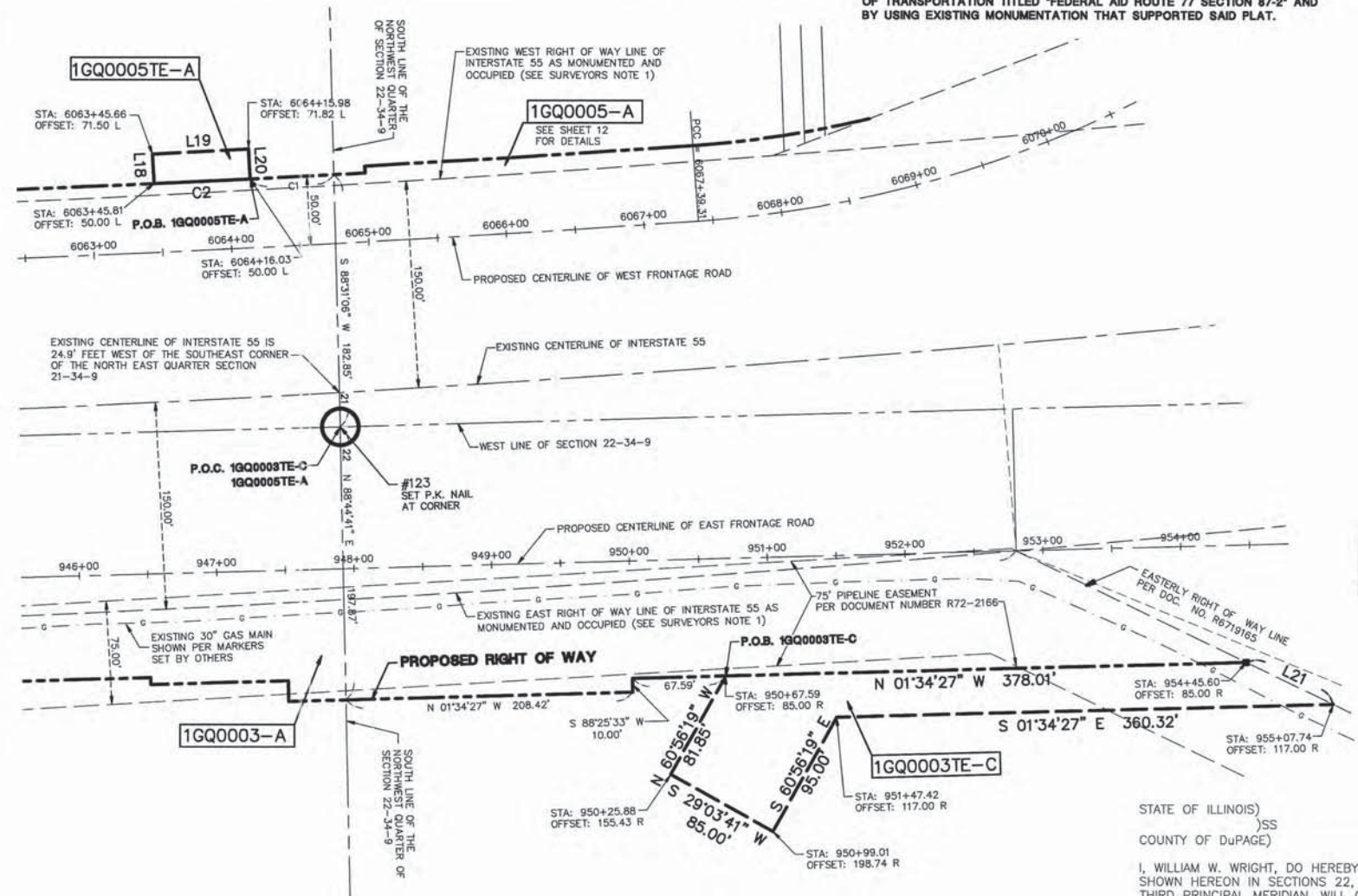


BEARINGS SHOWN HEREON ARE BASED ON ILLINOIS STATE PLANE COORDINATES, EAST ZONE, NORTH AMERICAN DATUM OF 1983. NGS CONTROL POINT PID AE2474 WAS RECOVERED AND USED FOR CONVERSIONS. ALL COORDINATE AND DIMENSIONAL VALUES SHOWN HEREON ARE "GROUND" NOT "GRID".
COMBINED SCALE FACTOR (GROUND TO GRID) = 0.99995548

F.A.P. RTE.	SECTION	COUNTY	TOTAL SHEETS	SHEET NO.
55	ARSENAL RD	WILL.	17	11
STA. TO STA.	6063+45.66 TO 950+25.88	TO STA. TO STA.	6064+16.03 TO 955+07.74	
FED. ROAD DIST. NO. 1	ILLINOIS	FED. AID PROJECT		

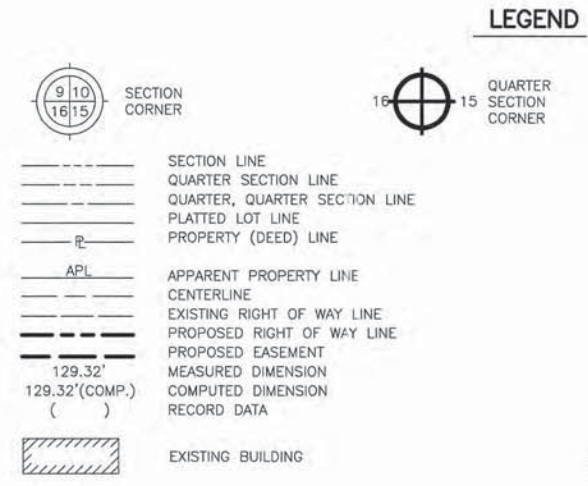
SURVEYORS NOTES:
1. THE 300 FEET WIDE RIGHT OF WAY FOR INTERSTATE ROUTE 55 WAS ESTABLISHED BY USING A PLAT PROVIDED BY THE ILLINOIS DEPARTMENT OF TRANSPORTATION TITLED "FEDERAL AID ROUTE 77 SECTION 87-2" AND BY USING EXISTING MONUMENTATION THAT SUPPORTED SAID PLAT.

PNO	NORTHING	EASTING	PNO	NORTHING	EASTING
100	1715419.634	1017663.498	720	1723610.689	1023562.478
101	1718065.875	1017596.206	721	1723604.586	1023554.557
102	1720705.766	1017532.759	722	172352.881	1023479.129
103	1723340.555	1017478.365	723	1724340.781	1023307.144
104	1725987.137	1017422.264	724	1724581.593	1022976.319
105	1728597.319	1017341.363	725	1724579.570	1022903.496
106	1731207.5	1017260.462	726	1724830.325	1022892.420
107	1733857.688	1017096.894	727	1724828.958	1022861.451
108	1736507.875	1016933.327	728	1725569.769	1022829.024
109	1739157.062	1016869.797	729	1725572.819	1022940.662
110	1733911.12	1019728.649	730	1726117.271	1022925.059
111	1731280.511	1019886.382	731	1726115.800	1022845.069
112	1728665.256	1019968.126	732	1726114.789	1022790.076
113	1726050.714	1020049.782	733	1728095.668	1022790.658
114	1723411.887	1020110.253	734	1728095.393	1022780.662
115	1720779.103	1020170.586	735	1728595.204	1022766.926
116	1718137.55	1020232.189	736	1728595.341	1022771.924
117	1715492.053	1020293.883	737	1728695.304	1022769.177
118	1715564.398	1022925.852	738	1730027.545	1021765.359
119	1718209.126	1022864.565	739	1730016.371	1021750.588
120	1720853.435	1022802.52	740	1729820.268	1021898.938
121	1723482.898	1022730.257	741	1729826.301	1021906.913
122	1726112.36	1022657.993	742	1729406.939	1022224.157
123	1728732.943	1022585.211	743	1729308.317	1022287.764
124	1731353.525	1022512.429	744	1729116.299	1022361.495
125	1733962.948	1022281.409	745	1728988.592	1022381.166
126	1736609.921	1022201.34	746	1728750.575	1022396.183
127	1739258.894	1024848.402	747	1728750.853	1022401.175
128	1734045.457	1024967.68	748	1728300.241	1022419.898
129	1731421.981	1025030.302	749	1727837.099	1022432.626
130	1728789.232	1025153.932	750	1727837.481	1022442.619
131	1726159.499	1025221.274	751	1727771.502	1022444.433
132	1723527.789	1025293.725	752	1727771.120	1022434.439
133	1720896.251	1025366.171	753	1727021.785	1022465.037
134	1718270.503	1025464.92	754	1727021.403	1022455.043
135	1715637.657	1025563.936	755	1727021.212	1022450.047
136	1715723.743	1028139.869	756	1726437.916	1022466.077
137	1718331.354	1028043.008	757	1726438.271	1022481.073
138	1720938.931	1027946.016	758	1726108.393	1022490.139
139	1723572.837	1027866.118	759	1726108.038	1022475.143
140	1726206.638	1027784.555	760	1725401.874	1022494.550
141	1728845.521	1027722.644	761	1724758.306	1022486.157
142	1731493.492	1027660.52	762	1724758.574	1022481.164
143	1734125.429	1027571.341	763	1724399.374	1022453.724
144	1736757.365	1027482.161	764	1724399.867	1022448.748
145	1731560.774	1030287.217	765	1724018.955	1022401.612
146	1728934.784	1030358.67	766	1724018.221	1022406.558
147	1726292.093	1030430.578	767	1723572.560	1022327.387
148	1726392.158	1033084.275	768	1723333.754	1022277.903
149	1729024.371	1033004.308	769	1723336.797	1022263.215
150	1731656.584	1032924.341	770	1723032.873	1022200.238
700	1719866.403	1022961.796	771	1723037.946	1022175.758
701	1719866.540	1022966.785	772	1722773.491	1022156.470
702	1720016.484	1022962.664	773	1722772.611	1022141.496
703	1720016.758	1022972.660	774	1722459.597	1022210.015
704	1720223.720	1022966.972	775	1722343.794	1022255.238
705	1720273.718	1022966.510	776	1722334.012	1022230.190
706	1720273.672	1022961.510	777	1722051.763	1022115.282
707	1720953.643	1022955.223	778	1722055.888	1022124.392
708	1721067.850	1022960.575	779	1721998.443	1022163.706
709	1721065.796	1022980.469	780	1721864.794	1022294.627
710	1721293.305	1023031.279	781	1721665.595	1022446.667
711	1721288.351	1023045.438	782	1721670.640	1022455.302
712	1721534.799	1023173.085	783	1721227.417	1022593.141
713	1721703.892	1023339.767	784	1721228.159	1022603.113
714	1722013.164	1023760.730	785	1721179.592	1022605.586
715	1722168.212	1023928.385	786	1720556.480	1022622.710
716	1722178.009	1023917.027	787	1720557.045	1022642.702
717	1722420.856	1024071.740	788	1731370.667	1023616.018
718	1723268.540	1023909.234	789	1731345.850	1023458.868
719	1723563.108	1023604.975	790	1728695.716	1022784.171
			791	1728945.621	1022777.303
			792	1728945.347	1022767.307
			793	1729390.778	1022755.065
			794	1725549.809	1022829.612
			795	1726788.138	1022471.457
			796	1726787.784	1022456.461



LINE	BEARING	LENGTH
L1	S 01°34'27" E	41.51'
L2	S 01°34'27" E	71.00'
L3	S 88°25'33" W	30.00'
L4	N 01°34'27" W	71.00'
L5	N 88°25'33" E	30.00'
L6	S 01°34'27" W	71.00'
L7	S 88°25'33" W	30.00'
L8	N 01°34'27" W	71.00'
L9	N 88°25'33" E	30.00'
L10	S 88°25'33" W	15.00'
L11	N 01°34'27" W	62.00'
L12	N 88°25'33" E	5.00'
L13	N 88°25'33" E	10.00'
L14	N 88°25'33" E	10.00'
L15	S 88°25'33" W	10.00'
L16	N 88°25'33" E	10.00'
L17	S 88°25'33" W	10.00'
L18	S 86°58'37" W	21.50'
L19	N 03°01'23" W	70.00'
L20	N 86°58'37" E	21.82'
L21	N 25°40'16" E	69.90'

CURVE	RADIUS	LENGTH	CHORD BEARING	CHORD	DELTA
C1	16050.00'	61.04'	S 02°39'40" E	61.04'	01°3'04"
C2	16050.00'	70.00'	S 02°45'38" E	70.00'	01°5'00"



STATE OF ILLINOIS
COUNTY OF DuPAGE

I, WILLIAM W. WRIGHT, DO HEREBY DECLARE THAT I HAVE SURVEYED THE PLAT OF HIGHWAYS SHOWN HEREON IN SECTIONS 22, 27, 28 AND 34, TOWNSHIP 34 NORTH RANGE 9, EAST OF THE THIRD PRINCIPAL MERIDIAN, WILL COUNTY, ILLINOIS; THAT THE SURVEY IS TRUE AND COMPLETE AS SHOWN TO THE BEST OF MY KNOWLEDGE AND BELIEF; THAT THE PLAT CORRECTLY REPRESENTS SAID SURVEY; THAT ALL MONUMENTS FOUND AND ESTABLISHED ARE OF PERMANENT QUALITY AND OCCUPY THE POSITIONS SHOWN THEREON AND THAT THE MONUMENTS ARE SUFFICIENT TO ENABLE THE SURVEY TO BE RETRACED. MADE FOR THE DEPARTMENT OF TRANSPORTATION, STATE OF ILLINOIS.

DATED AT LOMBARD, ILLINOIS THIS ____ DAY OF _____, A.D., 2009.

FOR REVIEW ONLY
ILLINOIS PROFESSIONAL LAND SURVEYOR NO. 3502
LICENSE EXPIRES NOVEMBER 30, 2010

DESIGN FIRM LICENSE NO. 184003350
LICENSE EXPIRES APRIL 30, 2009



IDOT SB - 070951 SHEET 11 IS A COVER SHEET AND IS NOT RECORDED

Manhard CONSULTING
2007 Hwy 156, Suite 103, Lombard, IL 60148 Tel: (630) 941-9000 Fax: (630) 941-9000 www.manhard.com
Civil Engineers - Surveyors - Water Resources Engineers - Water & Wastewater Engineers
Construction Managers - Environmental Scientists - Landscape Architects - Planners

RECEIVED
APR 27 2009
PLATS & LEGALS

PLAT OF HIGHWAYS
STATE OF ILLINOIS
DEPARTMENT OF TRANSPORTATION
F.A.I. ROUTE 55

SECTION: AT ARSENAL ROAD WILL COUNTY
PROJECT JOB NO. R-91-014-02
EASEMENT DETAIL: 1GQ0003 & 1GQ0005
SCALE: 1" = 60' SHEET 11 OF 17

REVISION DATE	DESCRIPTION	INITIALS
04/24/09	REVISED PER I.D.O.T. REVIEW	WWW
02/05/09	REVISED PER I.D.O.T. REVIEW	WWW
12/08/08	REVISED PER IN-HOUSE REVIEW	WWW
12/08/08	REVISED PER I.D.O.T. REVIEW	MAC/WWW
11/21/08	REVISED PER I.D.O.T. REVIEW	MAC/WWW
06/23/08	REVISED LOCATION OF THE NORTH 1/4 CORNER OF SECTION 22 (POINT 129)	MAC/WWW
01/24/08	REVISED PER I.D.O.T. REVIEW	MAC/WWW
01/22/08	REVISED PER I.D.O.T. REVIEW	MAC/WWW

RECORDING: RECORDED ON _____ AS DOCUMENT NO. _____

Apr 24, 2009 - 17:10 Des Name: P:\008\008\Sur\Final Drawings\10-11 IDOTB-Easement-Detail.dwg Updated By: bwright

CHECKED
INCH
NOTEBOOK NO.