

Install 6" Underground Warning Tape - Gas (Identoline or approved equal) for the entire length of the Pipeline Protection Slab crossing. The cost of the warning tape shall be included in the cost of the Utility Protection Pad installation

Trench Backfill where required

DESIGN STRESSES

$f'_c = 3500 \text{ psi}$
 $f_y = 60,000 \text{ psi (Reinforcement)}$

DESIGN LOADING

HS20-44

NOTES:

This slab has been designed for earth fill and a live load of HS20-44. If any construction equipment the Contractor uses has a greater loading than HS20-44, obtain approval from the Engineer for a redesigned slab, sealed by a licensed Structural Engineer in Illinois.

This Slab has been designed as applicable to the given dimensions. The Engineer must verify the dimensions are satisfied before materials have been ordered.

* Surevoid Products, Inc. Slab void heavy duty strength working load of 1500 psf. End caps required or approved equal.

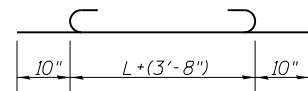
L = Clear Span = Width of Trench

Note A: Use this design for L=7'-0" or less.

For L Greater than 7'-0", Contractor should provide the engineer for approval, a redesign of the slab, sealed by a licensed Structural Engineer in Illinois.

Minimum Lap for Longitudinal Bars

- #7 bars = 4'-2"
- #6 bars = 3'-1"
- #4 bars = 2'-1"



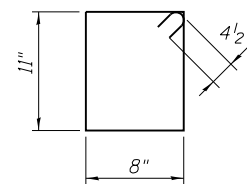
#7 Bars

Note: Tilt hook to provide the specified clearance

****UTILITY PROTECTION PAD FOR EXISTING PIPELINES**

Design in accordance with title 49-Part 192 Minimum Federal Safety Standards and ASME Guide for Gas Piping Systems, Latest Edition.

**Will be paid for under the item "Utility Protection Pad"



#4 Stirrups

FILE NAME = SA\JOL\6300-6399\6346-045\Micros\CADD Sheets\0160P51-SHT-DETAILS01.dgn

USER NAME =	DESIGNED - MAG	REVISED
MODEL NAME = Default	CHECKED - BMA	REVISED
PLOT SCALE =	DRAWN - DJW	REVISED
PLOT DATE =	DATE - 12-5-12	REVISED

F.A.I. RTE.	SECTION	COUNTY	TOTAL SHEETS	SHEET NO.
55	99-IAC-2	WILL	102	73
CONTRACT NO. 60P51			ILLINOIS FED. AID PROJECT	