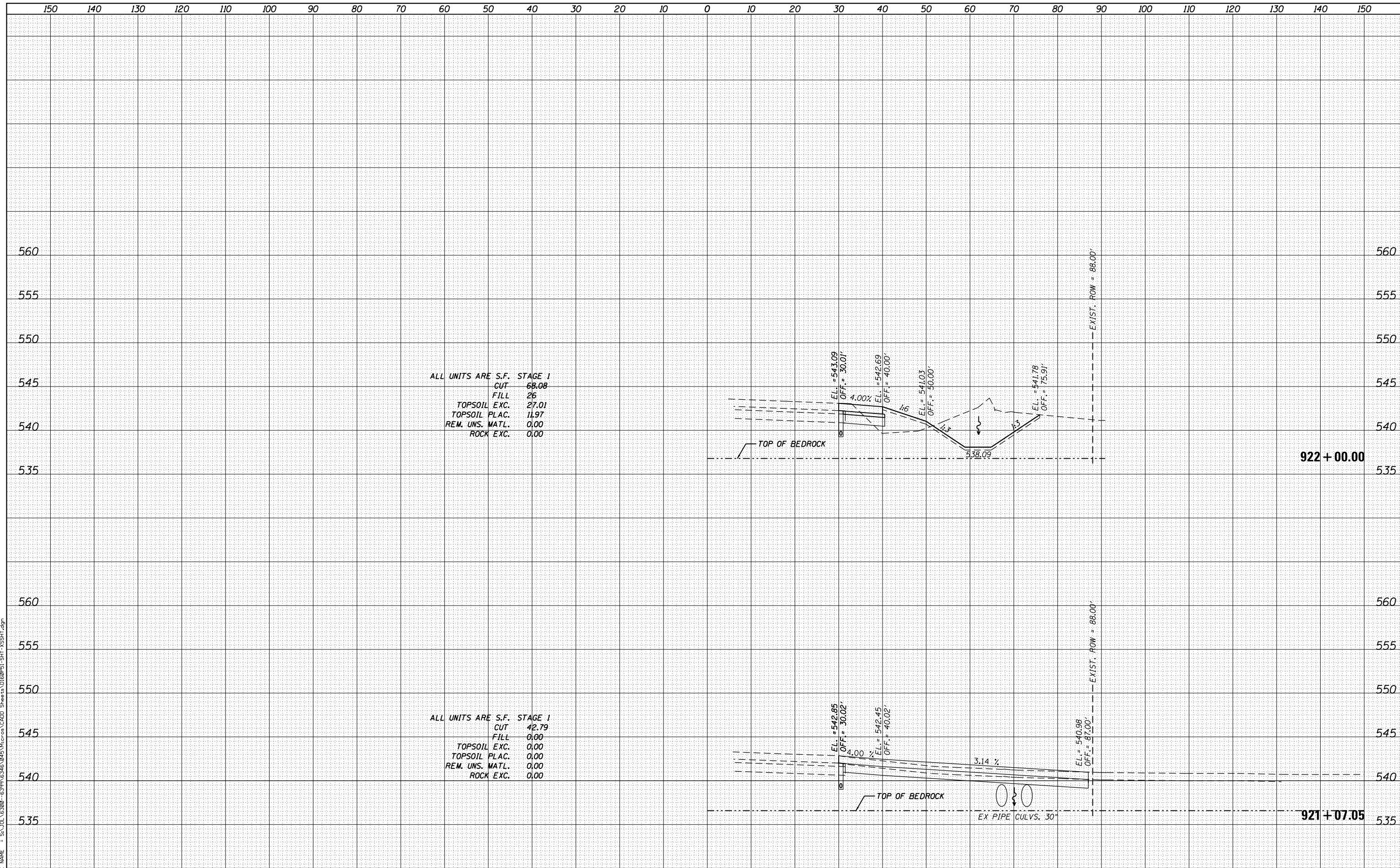


DATE	
BY	
FINAL SURVEY	SURVEYED
NOTE BOOK	PLOTTED
NO.	TEMPLATE
	AREAS CHECKED

DATE	
BY	
ORIGINAL SURVEY	SURVEYED
NOTE BOOK	PLOTTED
NO.	TEMPLATE
	AREAS CHECKED

FILE NAME = SA_IOL_63800_63997\63461\045\WIP\04 CAD Sheets\0160P51_SHT_1.XSSHT.dgn



ALL UNITS ARE S.F. STAGE 1
 CUT 68.08
 FILL 26
 TOPSOIL EXC. 27.01
 TOPSOIL PLAC. 11.97
 REM. UNS. MATL. 0.00
 ROCK EXC. 0.00

ALL UNITS ARE S.F. STAGE 1
 CUT 42.79
 FILL 0.00
 TOPSOIL EXC. 0.00
 TOPSOIL PLAC. 0.00
 REM. UNS. MATL. 0.00
 ROCK EXC. 0.00

SA
 1170 SOUTH HOUBOLT ROAD
 JOLIET, ILLINOIS 60431
 STRAND ASSOCIATES*
 (815) 744-4200

USER NAME = dennisw	DESIGNED - MAG	REVISED -
MODEL NAME = Default	DRAWN - JKP/DJW	REVISED -
PLOT SCALE = 20.0000' / in.	CHECKED - BMA	REVISED -
PLOT DATE = 2/18/2014	DATE - 12-5-12	REVISED -

**STATE OF ILLINOIS
 DEPARTMENT OF TRANSPORTATION**

ARSENAL ROAD CROSS SECTIONS
 SCALE: 1"=10'H 1"=5'V SHEET 2 OF 20 SHEETS STA. 921+07.05 TO STA. 922+00.00

F.A.I. RTE.	SECTION	COUNTY	TOTAL SHEETS	SHEET NO.
55	99-IAC-2	WILL	102	84
CONTRACT NO. 60P51				

ILLINOIS FED. AID PROJECT