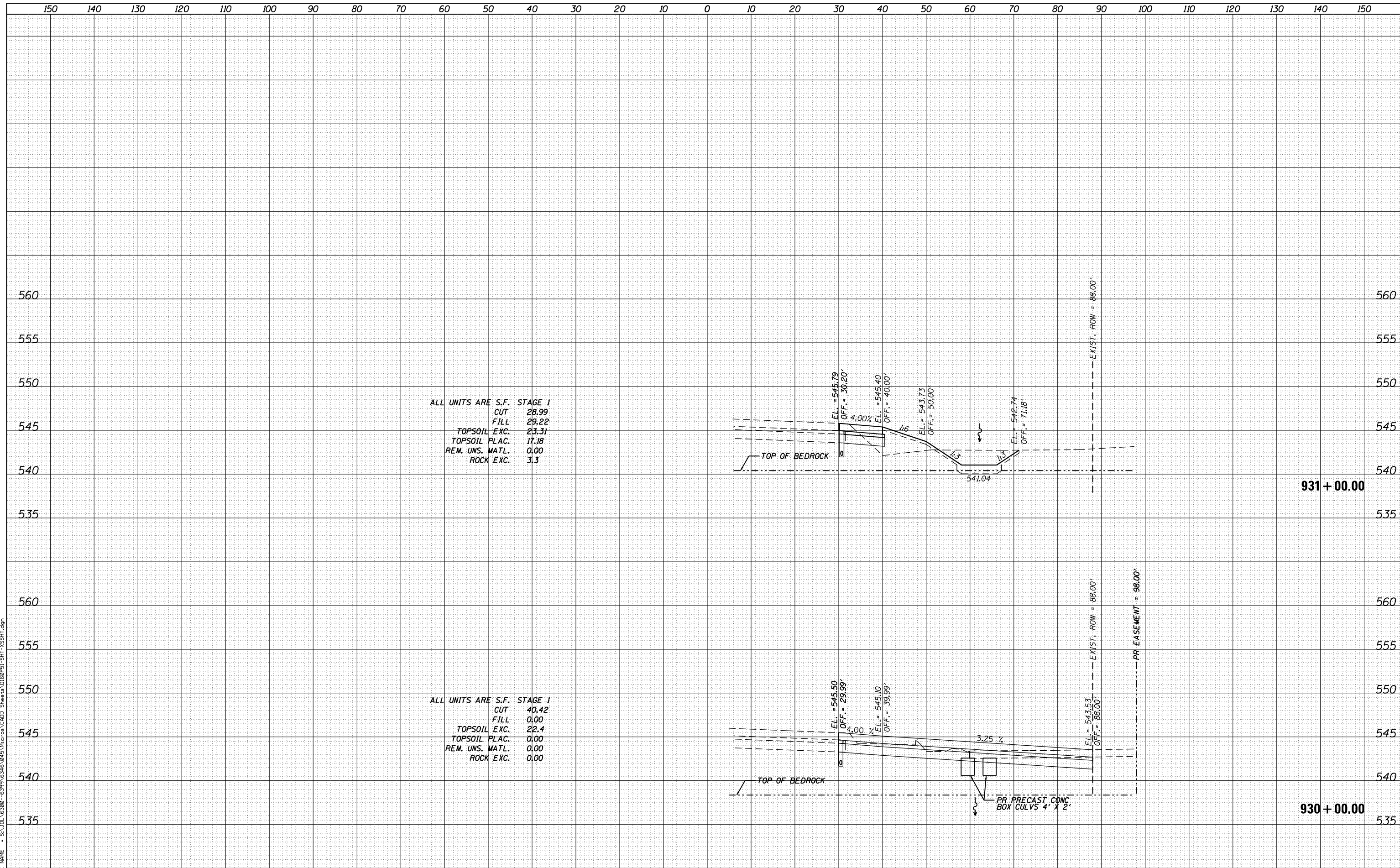


DATE	
BY	
FINAL SURVEY NO.	
SURVEYED AREAS CHECKED	
PLOTTED TEMPLATE	
NOTE BOOK	
AREAS CHECKED	

DATE	
BY	
ORIGINAL SURVEY NO.	
SURVEYED AREAS CHECKED	
PLOTTED TEMPLATE	
NOTE BOOK	
AREAS CHECKED	

FILE NAME = S:\JL 63800 - 63999\63461\045\VicPos\CADD_Sheets\060P51_SHT-XSSH1.dgn



ALL UNITS ARE S.F. STAGE 1
 CUT 28.99
 FILL 29.22
 TOPSOIL EXC. 23.31
 TOPSOIL PLAC. 17.18
 REM. UNS. MATL. 0.00
 ROCK EXC. 3.3

ALL UNITS ARE S.F. STAGE 1
 CUT 40.42
 FILL 0.00
 TOPSOIL EXC. 22.4
 TOPSOIL PLAC. 0.00
 REM. UNS. MATL. 0.00
 ROCK EXC. 0.00



USER NAME = dennisw	DESIGNED - MAG	REVISED -
MODEL NAME = Default	DRAWN - JKP/DJW	REVISED -
PLOT SCALE = 20.0000' / in.	CHECKED - BMA	REVISED -
PLOT DATE = 2/18/2014	DATE - 12-5-12	REVISED -

STATE OF ILLINOIS
 DEPARTMENT OF TRANSPORTATION

ARSENAL ROAD CROSS SECTIONS
 SCALE: 1" = 10'H 1" = 5' SHEET 7 OF 20 SHEETS STA. 930+00.00 TO STA. 931+00.00

F.A.I. RTE.	SECTION	COUNTY	TOTAL SHEETS	SHEET NO.
55	99-IAC-2	WILL	102	89
CONTRACT NO. 60P51				

ILLINOIS FED. AID PROJECT