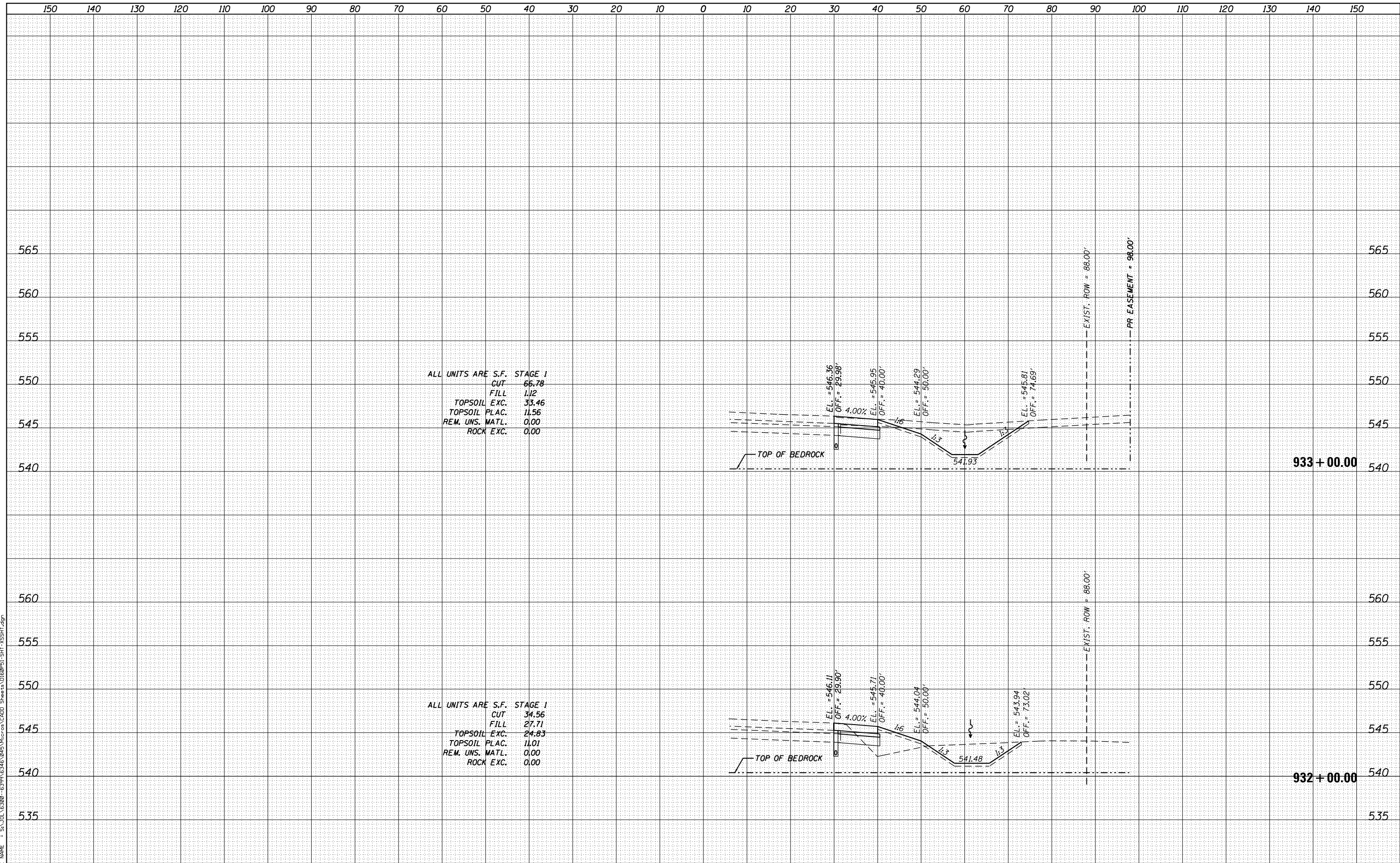


DATE	
BY	
FINAL SURVEY	SURVEYED
NOTE BOOK	PLOTTED
NO.	TEMPLATE
	AREAS CHECKED

DATE	
BY	
ORIGINAL SURVEY	SURVEYED
NOTE BOOK	PLOTTED
NO.	TEMPLATE
	AREAS CHECKED

FILE NAME = SA_IOL_63800 - 63999\63461\0415\IAC02_Sheets\0160P51_SHT_1.XSSHT.dgn



ALL UNITS ARE S.F. STAGE 1
 CUT 66.78
 FILL 1.12
 TOPSOIL EXC. 33.46
 TOPSOIL PLAC. 11.56
 REM. UNS. MATL. 0.00
 ROCK EXC. 0.00

ALL UNITS ARE S.F. STAGE 1
 CUT 34.56
 FILL 27.71
 TOPSOIL EXC. 24.83
 TOPSOIL PLAC. 11.01
 REM. UNS. MATL. 0.00
 ROCK EXC. 0.00

SA 1170 SOUTH HOUBOLT ROAD
 JOLIET, ILLINOIS 60431
STRAND (815) 744-4200
 ASSOCIATES*

USER NAME = dennisw	DESIGNED - MAG	REVISED -
MODEL NAME = Default	DRAWN - JKP/DJW	REVISED -
PLOT SCALE = 20.0000' / in.	CHECKED - BMA	REVISED -
PLOT DATE = 2/18/2014	DATE - 12-5-12	REVISED -

STATE OF ILLINOIS
DEPARTMENT OF TRANSPORTATION

ARSENAL ROAD CROSS SECTIONS
 SCALE: 1"=10'H 1"=5' SHEET 8 OF 20 SHEETS STA. 932+00.00 TO STA. 933+00.00

F.A.I. RTE.	SECTION	COUNTY	TOTAL SHEETS	SHEET NO.
55	99-IAC-2	WILL	102	90
CONTRACT NO. 60P51				

ILLINOIS FED. AID PROJECT