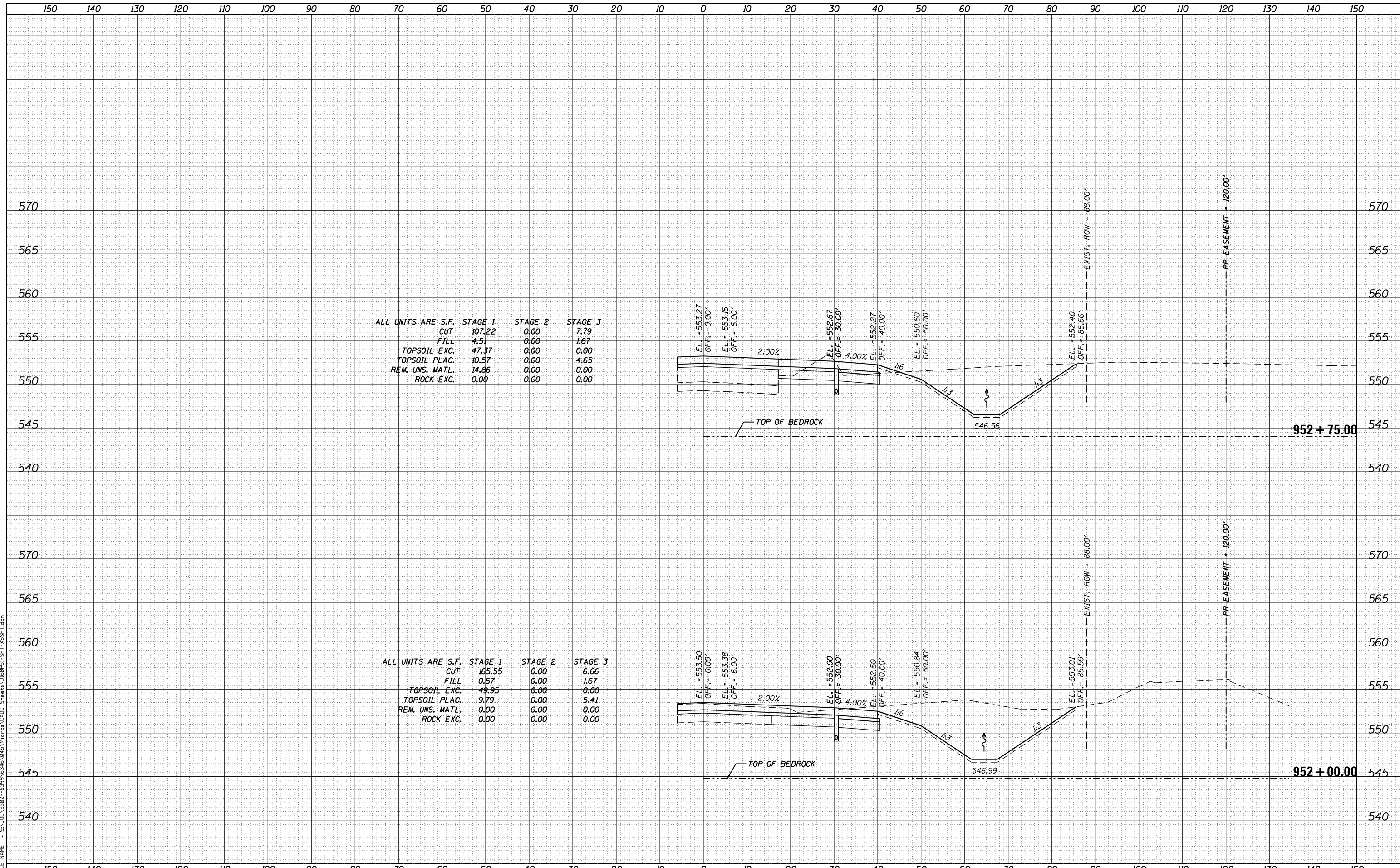


DATE	
BY	
FINAL SURVEY	SURVEYED
NOTE BOOK	PLOTTED
NO.	TEMPLATE
	AREAS CHECKED

DATE	
BY	
ORIGINAL SURVEY	SURVEYED
NOTE BOOK	PLOTTED
NO.	TEMPLATE
	AREAS CHECKED

FILE NAME = SA_IOL_63800_63997\63461\0481\WIP\04 CAD_Sheets\0160P51_SHT_1.XSSHT.dgn



ALL UNITS ARE S.F.

	STAGE 1	STAGE 2	STAGE 3
CUT	107.22	0.00	7.79
FILL	4.51	0.00	1.67
TOPSOIL EXC.	47.37	0.00	0.00
TOPSOIL PLAC.	10.57	0.00	4.65
REM. UNS. MATL.	14.86	0.00	0.00
ROCK EXC.	0.00	0.00	0.00

ALL UNITS ARE S.F.

	STAGE 1	STAGE 2	STAGE 3
CUT	165.55	0.00	6.66
FILL	0.57	0.00	1.67
TOPSOIL EXC.	49.95	0.00	0.00
TOPSOIL PLAC.	9.79	0.00	5.41
REM. UNS. MATL.	0.00	0.00	0.00
ROCK EXC.	0.00	0.00	0.00

STRAND ASSOCIATES
1170 SOUTH HOUBOLT ROAD
JOLIET, ILLINOIS 60431
(815) 744-4200

USER NAME = dennisw	DESIGNED - MAG	REVISED -
MODEL NAME = Default	DRAWN - JKP/DJW	REVISED -
PLOT SCALE = 20.0000' / in.	CHECKED - BMA	REVISED -
PLOT DATE = 3/21/2014	DATE - 12-5-12	REVISED -

**STATE OF ILLINOIS
DEPARTMENT OF TRANSPORTATION**

ARSENAL ROAD CROSS SECTIONS
SCALE: 1" = 10'-0" H, 1" = 5'-0" V
SHEET 20 OF 20 SHEETS
STA. 952+00.00 TO STA. 952+75.00

F.A.I. RTE.	SECTION	COUNTY	TOTAL SHEETS	SHEET NO.
55	99-IAC-2	WILL	102	102
CONTRACT NO. 60P51			ILLINOIS FED. AID PROJECT	