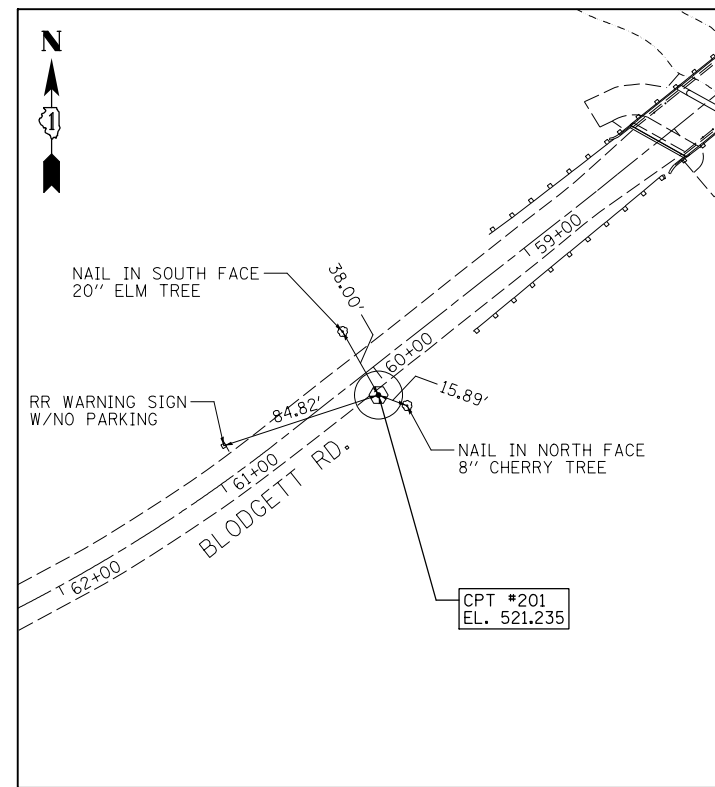


CONTROL POINT #200

IRON ROD WITH CAP

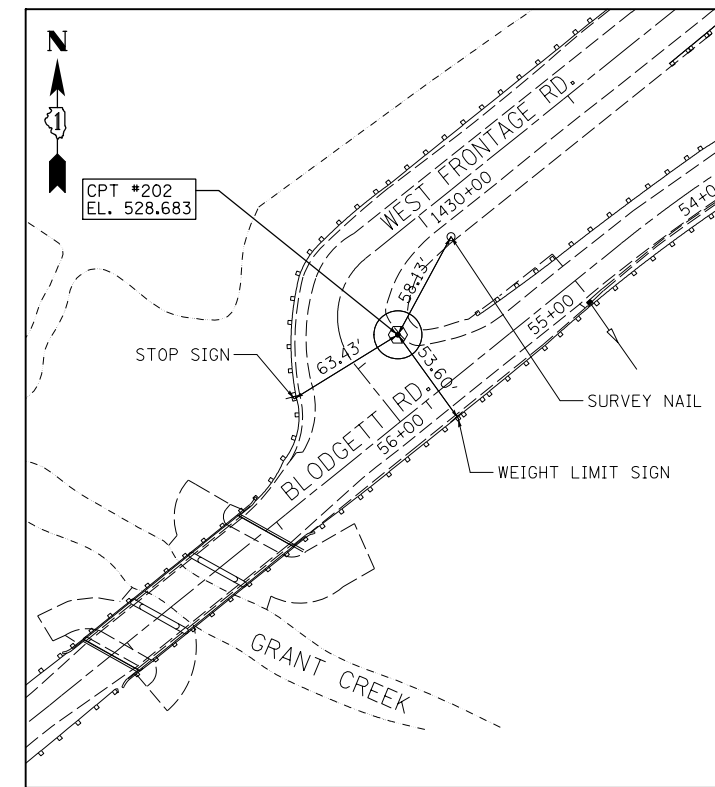
STA. N/A
 N 1,715,522.633
 E 1,021,622.526
 ELEV. 512.272



CONTROL POINT #201

IRON ROD WITH CAP

STA. 60+07.04, 17.23' LT.
 N 1,715,719.015
 E 1,022,000.965
 ELEV. 521.235



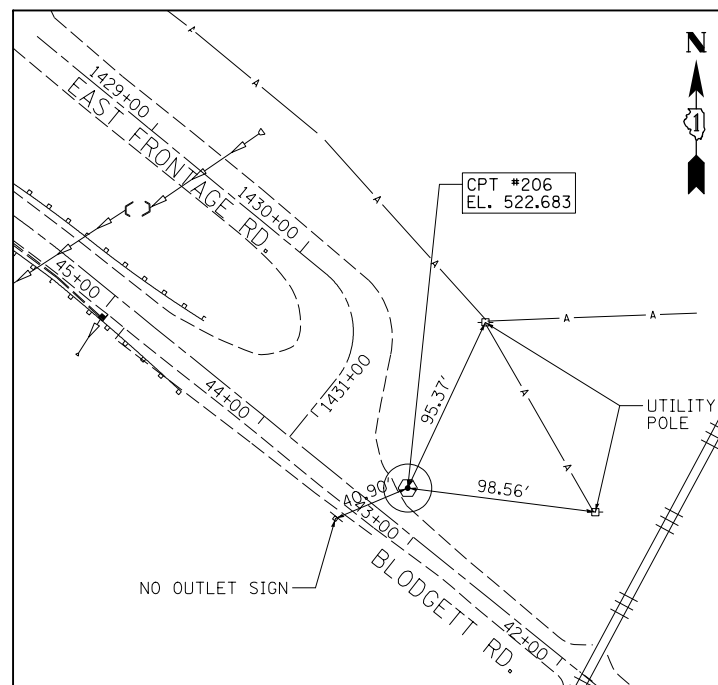
CONTROL POINT #202

MAG NAIL

STA. 55+89.62, 36.01' RT.
 N 1,716,018.131
 E 1,022,296.060
 ELEV. 528.683

BENCHMARK "A"
 ELEV. = 529.61
 " " CUT ON NE WINGWALL OF BRIDGE OVER GRANT CREEK.

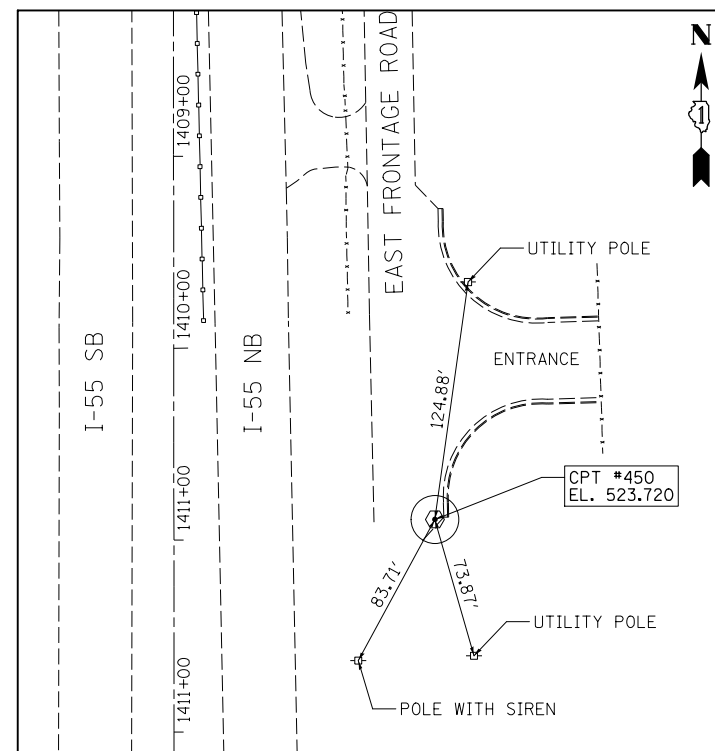
BENCHMARK "B"
 ELEV. = 522.00
 RAILROAD SPIKE IN SW FACE OF FIRST UTILITY POLE SE OF ENTRANCE TO TRANSFER STATION ON EAST FRONTAGE ROAD. +250' WEST OF THE INTERSECTION WITH BLODGETT ROAD.



CONTROL POINT #206

NGS MONUMENT (NO CAP)

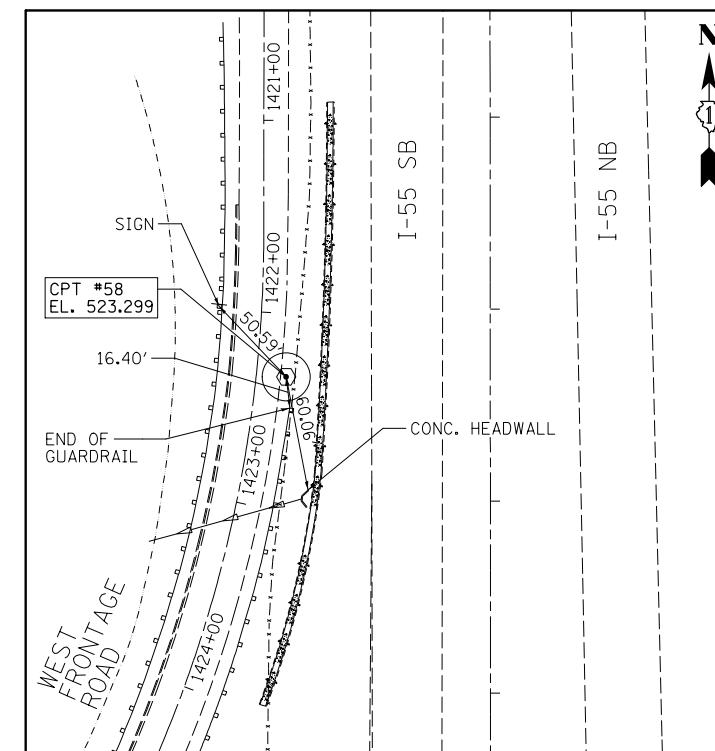
STA. 43+18.07, 19.20' RT.
 N 1,715,945.768
 E 1,023,456.463
 ELEV. 522.831



CONTROL POINT #450

MAG NAIL

STA. 1410+89.38, 135.75' LT.
 N 1,717,830.056
 E 1,022,991.573
 ELEV. 523.720

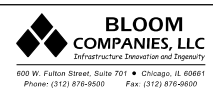


CONTROL POINT #58

MAG NAIL

STA. 1422+32.19, 15.60' LT.
 N 1,716,684.064
 E 1,022,750.228
 ELEV. 523.299

FILE NAME = F:\3-1319-Blodgett\Drawings\CADD\Sheets\160656-sh-1-A1B.dgn



USER NAME = tborjes	DESIGNED - WJD	REVISED -
PLOT SCALE = 100.000000' / 1" =	DRAWN - WJD	REVISED -
PLOT DATE = 3/31/2014	CHECKED - STI	REVISED -
	DATE - 04/13/12	REVISED -

**STATE OF ILLINOIS
 DEPARTMENT OF TRANSPORTATION**

ALIGNMENTS, TIES & BENCHMARKS

SCALE: 1" = 50' SHEET 1 OF 4 SHEETS STA. TO STA.

F.A.I. RTE.	SECTION	COUNTY	TOTAL SHEETS	SHEET NO.
55	99-2HB-3I-3	WILL	87	21
CONTRACT NO. 60X60				
ILLINOIS FED. AID PROJECT				