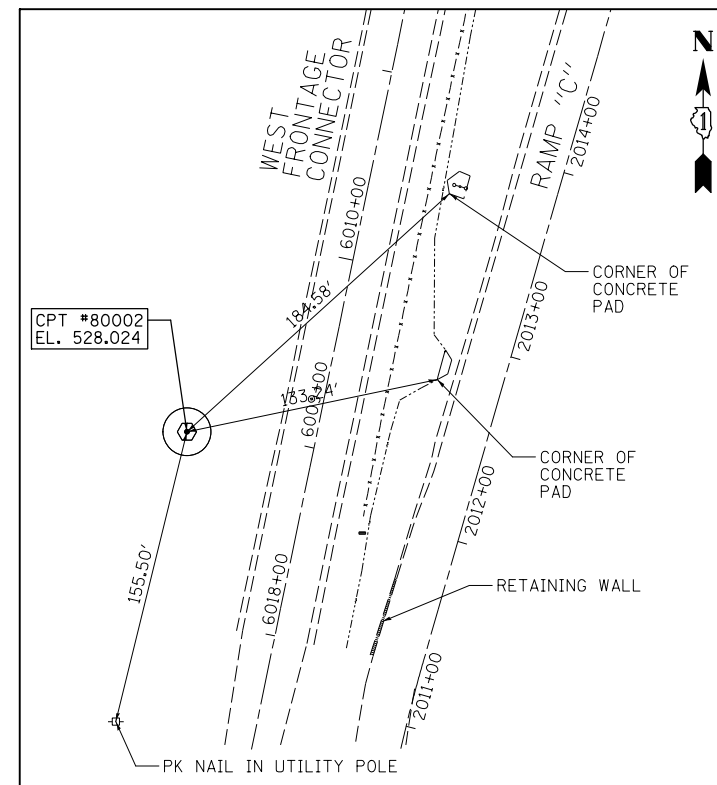


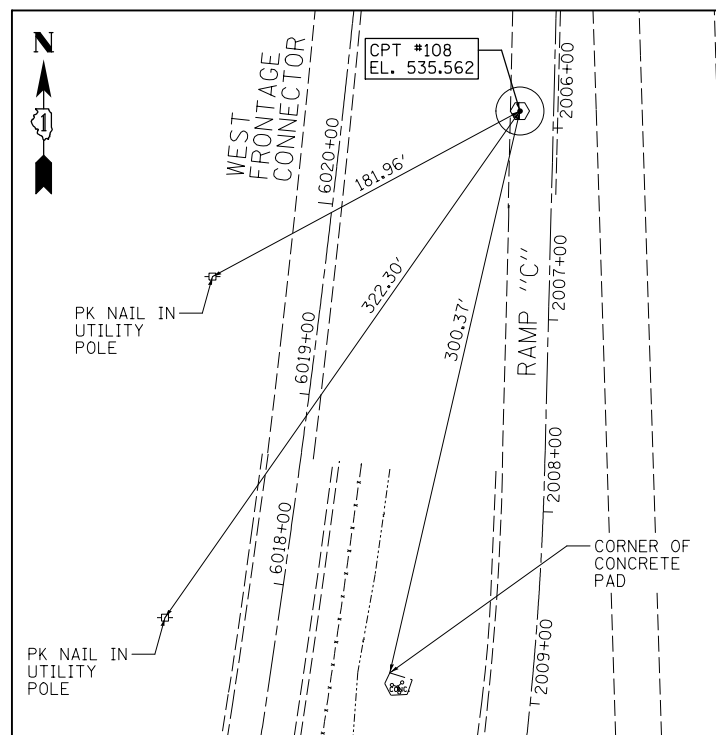
**CONTROL POINT #80449**  
PK NAIL IN UTILITY POLE

STA. 6017+74.148 (FR), 58.585' LT.  
STA. 2008+70.877 (RAMP C), 193.500' RT.  
N 1,724,041.728  
E 1,022,411.440  
ELEV. 530.054



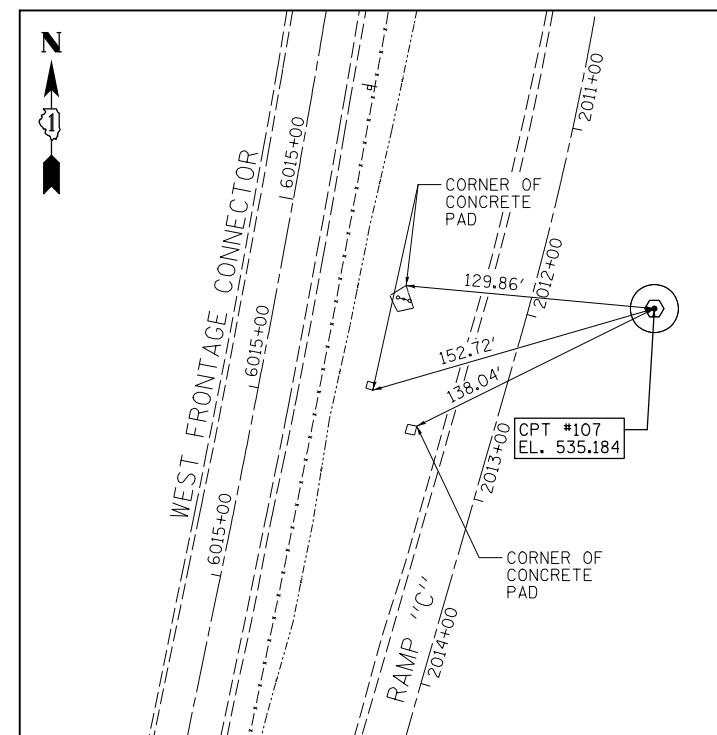
**CONTROL POINT #80002**  
PK NAIL IN UTILITY POLE

STA. 6008+94.886 (FR), 66.454' LT.  
STA. 2017+84.050 (RAMP C), 151.411 RT.  
N 1,723,183.174  
E 1,022,240.110  
ELEV. 528.024



**CONTROL POINT #108**  
CUT CROSS IN PAVEMENT

STA. 6020+58.723 (FR), 91.664' RT.  
STA. 2005+91.667 (RAMP C), 17.491' RT.  
N 1,724,305.645  
E 1,022,596.441  
ELEV. 535.562



**CONTROL POINT #107**  
CUT CROSS IN PAVEMENT

STA. 6014+77.856 (FR), 195.224' RT.  
STA. 2011+79.996 (RAMP C), 63.251' LT.  
N 1,723,705.742  
E 1,022,261.417  
ELEV. 535.184

**BENCHMARK "A"**

ELEV. = 529.61

" " CUT ON NE WINGWALL OF BRIDGE OVER GRANT CREEK.

**BENCHMARK "B"**

ELEV. = 522.00

RAILROAD SPIKE IN SW FACE OF FIRST UTILITY POLE SE OF ENTRANCE TO TRANSFER STATION ON EAST FRONTAGE ROAD, +250' WEST OF THE INTERSECTION WITH BLODGETT ROAD.

FILE NAME = F:\3-1319-Bldg\Drawings\CADD\Sheets\10160536-sht-A1B.dgn



USER NAME = tborges	DESIGNED - WJD	REVISED -
PLOT SCALE = 100.000000' / 1" =	DRAWN - WJD	REVISED -
PLOT DATE = 3/31/2014	CHECKED - STI	REVISED -
	DATE - 04/13/12	REVISED -

**STATE OF ILLINOIS  
DEPARTMENT OF TRANSPORTATION**

**ALIGNMENTS, TIES & BENCHMARKS**

SCALE: 1" = 50' SHEET 2 OF 4 SHEETS STA. TO STA.

F.A.I. RTE.	SECTION	COUNTY	TOTAL SHEETS	SHEET NO.
55	99-2HB-3I-3	WILL	87	22
CONTRACT NO. 60X60				
ILLINOIS FED. AID PROJECT				