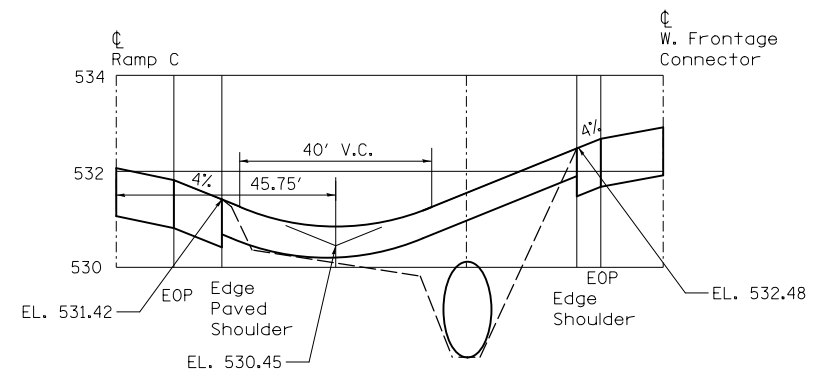
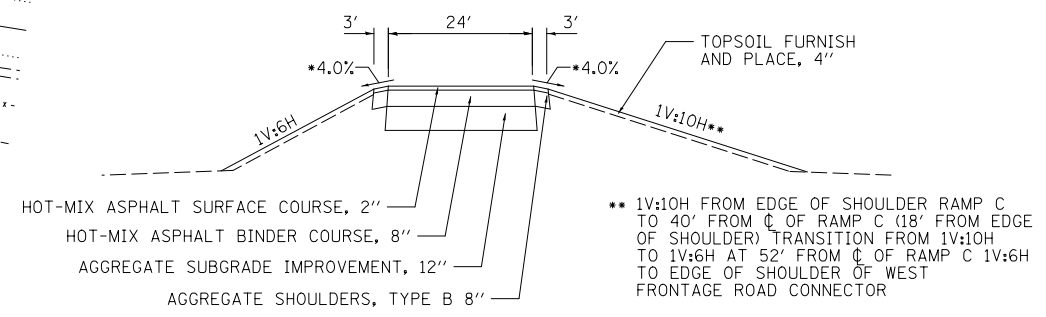


EMERGENCY VEHICLES ONLY

NOTES:
SIGN TO BE BOLTED TO EACH SIDE OF THE GATE IN A LOCATION AND MANNER APPROVED BY THE ENGINEER.
CHAIN LINK FENCE TO EXTEND 10' SOUTH OF GATE AND 40' NORTH OF GATE.
EXACT LOCATION OF FENCE REMOVAL MAY BE ADJUSTED BASED UPON EXISTING CONDITIONS.

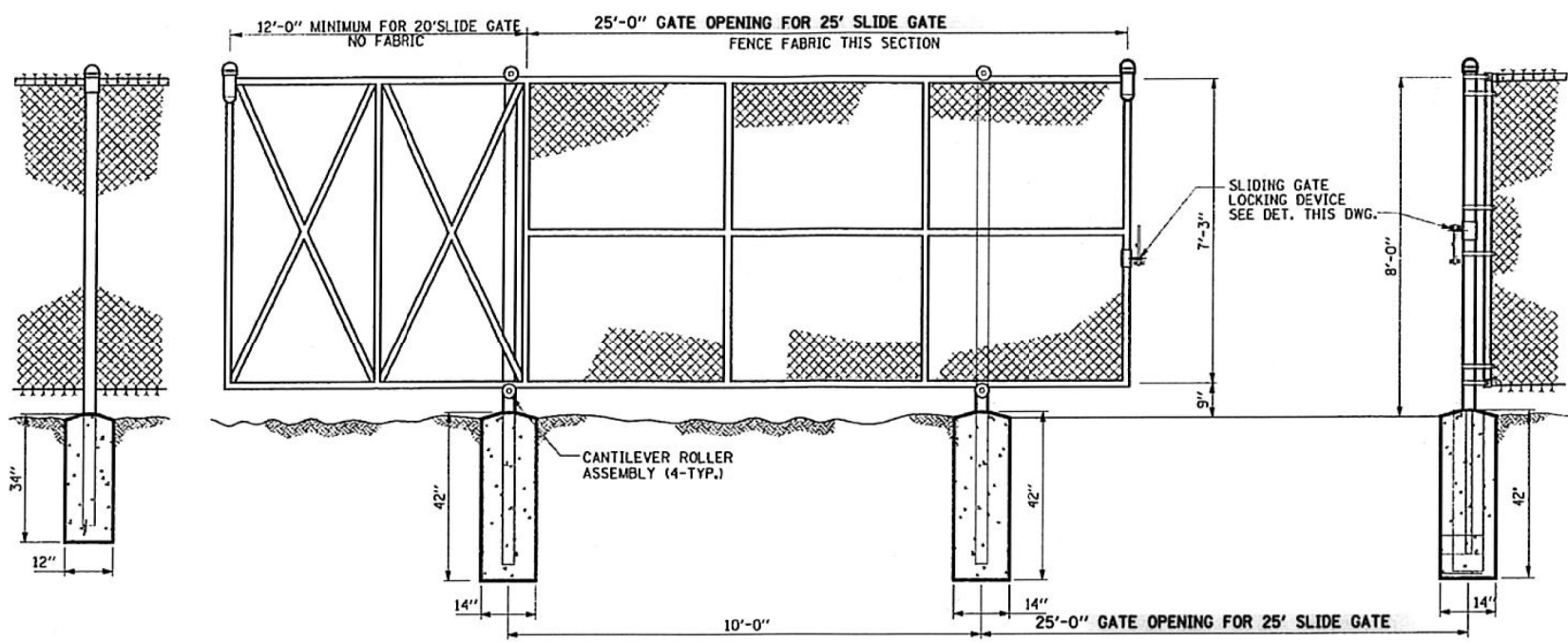


SECTION A-A



SECTION B-B

*MATCHES ROADWAY SLOPE

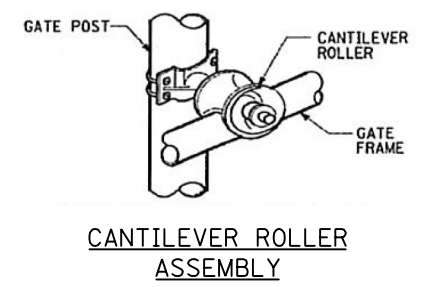


CANTILEVER SLIDE GATE

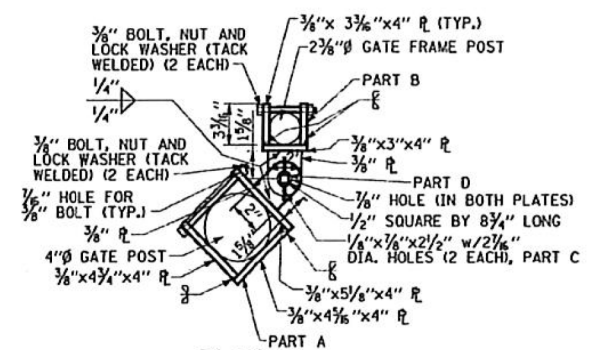
FABRIC	MESH	GAUGE	SELVAGE
ALUM.	2"	9	K+B
BARBED WIRE	TYPE 4 PT.	3 STR. X	6 STR. □
FRMWRK.	O.D.	WALL	LBS/LF
TOP RAIL	1 5/8"	.140	2.27
LINE POSTS	2 3/8"	.154	3.65
BRACE RAIL	1 5/8"	.140	2.27
CORNER POSTS	2 3/8"	.203	5.79
END POSTS	2 3/8"	.203	5.79

NOTES:
1. ALL MATERIALS SHALL BE HOT DIP GALVANIZED
2. ALL FITTINGS SHALL BE PRESSED STEEL.

FENCE SPECIFICATIONS



CANTILEVER ROLLER ASSEMBLY

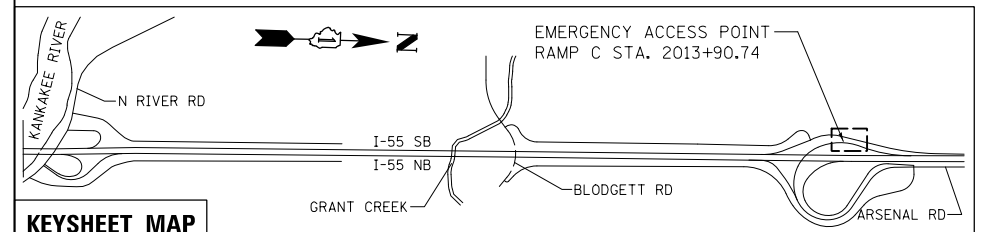


PLAN

NOT TO SCALE

NOTES:
LOCKING DEVICE SHALL BE GALVANIZED STEEL IN ACCORDANCE WITH ASTM A123-97

SLIDE GATE LOCKING DEVICE



KEYSHEET MAP

**STATE OF ILLINOIS
DEPARTMENT OF TRANSPORTATION**

**EMERGENCY ACCESS - RAMP C TO WEST FRONTAGE RD CONNECTOR
PLAN**

SCALE: 1" = 40' SHEET 2 OF 3 SHEETS STA. TO STA.

F.A.I. RTE.	SECTION	COUNTY	TOTAL SHEETS	SHEET NO.
55	99-2HB-3I-3	WILL	87	29
				CONTRACT NO. 60X60
ILLINOIS FED. AID PROJECT				

FILE NAME = F:\1319_Bldgett\Drawings\CADD\Sheets\0160636_sht-plan.dgn

BLOOM COMPANIES, LLC
Infrastructure Detection and Engineering
600 W. Fulton Street, Suite 701 • Chicago, IL 60661
Phone: (312) 676-6500 Fax: (312) 676-9600

USER NAME = tborges	DESIGNED -	REVISED BCA
PLOT SCALE = 80.0000' / in.	DRAWN -	REVISED BL
PLOT DATE = 3/31/2014	CHECKED -	REVISED MMO
	DATE -	REVISED 12/4/2013