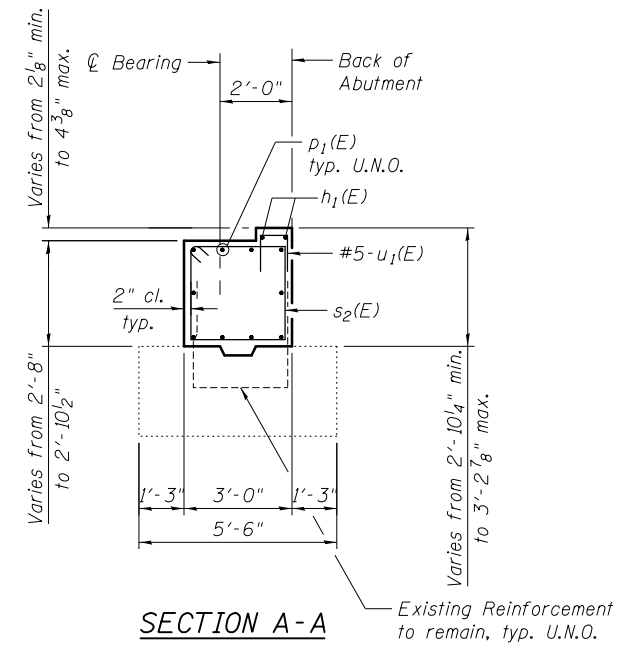


Existing reinforcements, that are exposed outside of new abutment cap, shall be cut flush with concrete pile cap and sealed with epoxy prior to placement of new Abutment cap. Applicable only to exterior existing reinforcements.

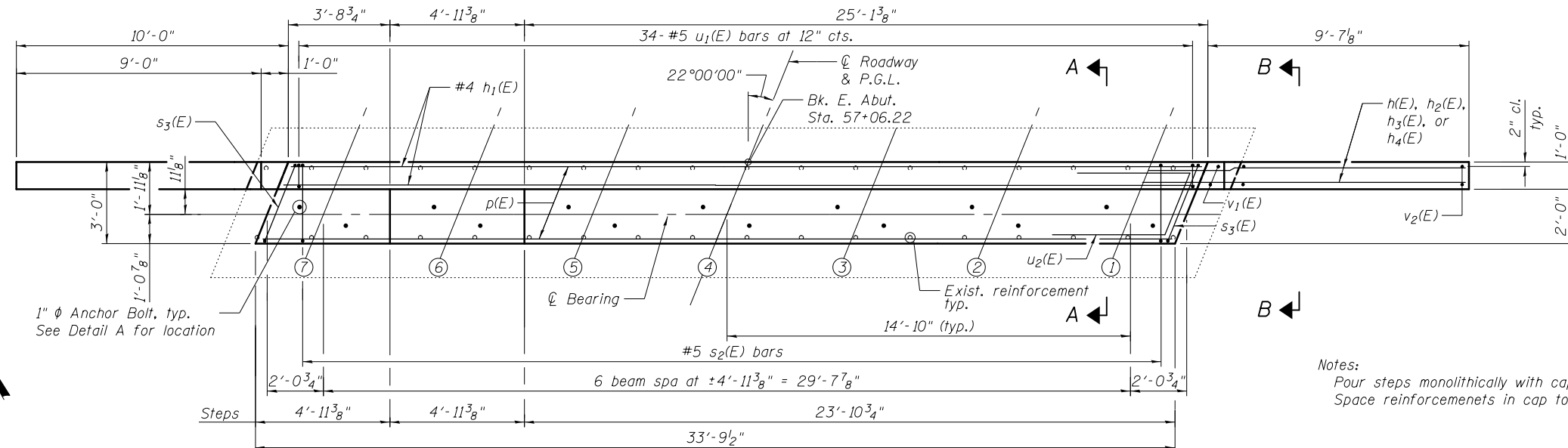
**ELEVATION**

(Looking North)  
u1(E) bars not shown for clarity

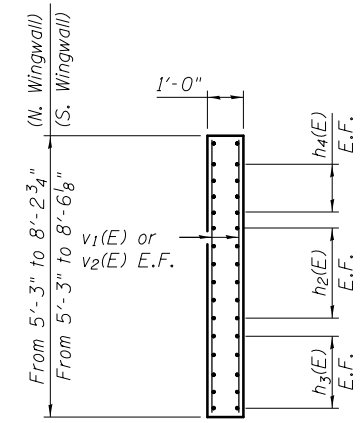
\* Epoxy grout #5 h3(E) bars in 9" (min.) drilled holes according to Article 584 of the Standard Specifications.



**SECTION A-A**



**PLAN**

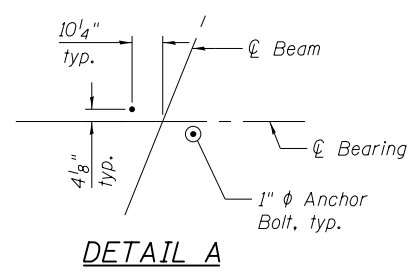


**SECTION B-B**

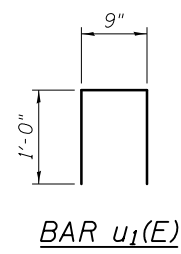
**BILL OF MATERIAL**

Bar	No.	Size	Length	Shape
h(E)	4	#5	10'-0"	—
h1(E)	2	#4	33'-5"	—
h2(E)	24	#5	12'-10"	—
h3(E)	20	#5	9'-3"	—
h4(E)	16	#5	8'-3"	—
p1(E)	10	#7	33'-5"	—
s2(E)	34	#5	11'-0"	□
s3(E)	2	#5	11'-5"	□
u1(E)	36	#5	2'-9"	□
u2(E)	6	#6	10'-6"	□
v1(E)	4	#5	6'-0"	—
v2(E)	44	#5	13'-1"	—
			Concrete Structures	Cu. Yd. 15.9
			Reinforcement Bars, Epoxy Coated	Pound 2,650

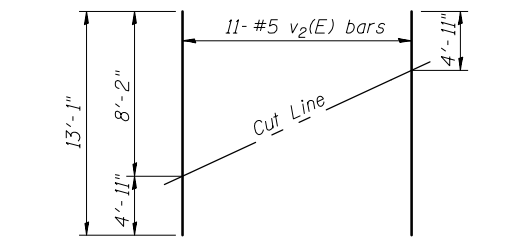
Notes:  
Pour steps monolithically with cap.  
Space reinforcements in cap to miss anchor bolts.



**DETAIL A**

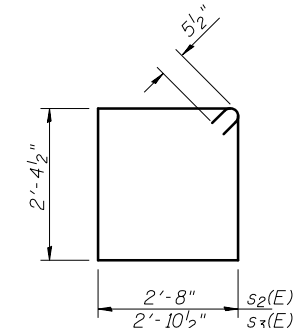


**BAR u1(E)**

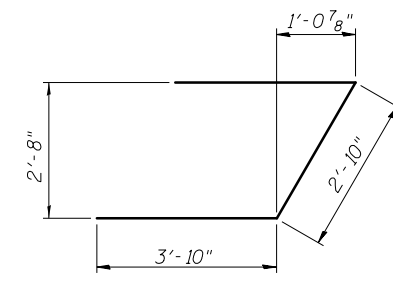


**FIELD CUTTING DIAGRAM-BAR v2(E)**

Order v2(E) full length. Cut as shown and use remainder of bars in opposite face.  
\*\* Cut v1(E) and v2(E) bars in field to fit in North Wingwall.



**BARS s2(E) & s3(E)**



**BAR u2(E)**

FILENAME: F:\3-1319\_Budget\Drawings\CADD\Sheets\0990101-60536-016-East-abutment.dgn



USER NAME = tborges  
DESIGNED - KO  
CHECKED - BCM  
PLOT SCALE = N/A  
DRAWN - KO  
PLOT DATE = 3/31/2014

DESIGNED - KO  
CHECKED - BCM  
DRAWN - KO  
CHECKED - 8/23/2012

REVISED  
REVISED  
REVISED  
REVISED

**STATE OF ILLINOIS  
DEPARTMENT OF TRANSPORTATION**

**EAST ABUTMENT  
STRUCTURE NO. 099-0181**

SHEET NO. S16 OF S20 SHEETS

F.A.I. RTE.	SECTION	COUNTY	TOTAL SHEETS	SHEET NO.
55	99-2HB-3I-3	WILL	87	54
				CONTRACT NO. 60X60

ILLINOIS FED. AID PROJECT