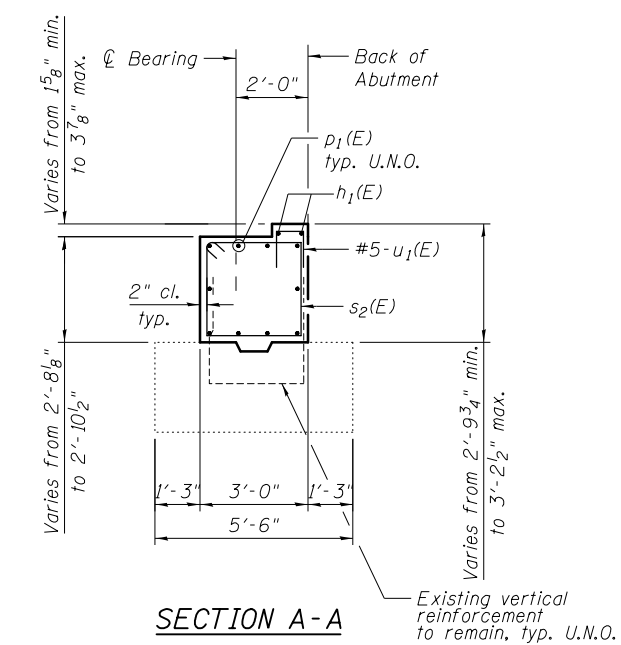


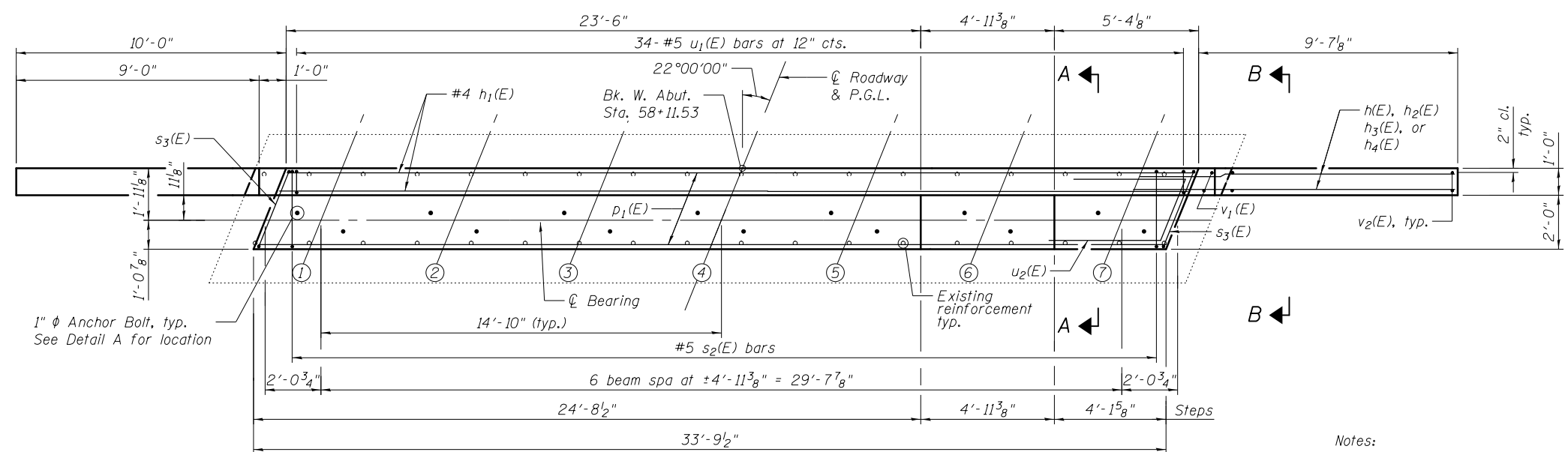
Existing reinforcements, that are exposed outside of new abutment cap, shall be cut flush with concrete pile cap and sealed with epoxy prior to placement of new Abutment cap. Applicable only to exterior existing reinforcements.

ELEVATION
(Looking South)
u₁(E) bars not shown for clarity

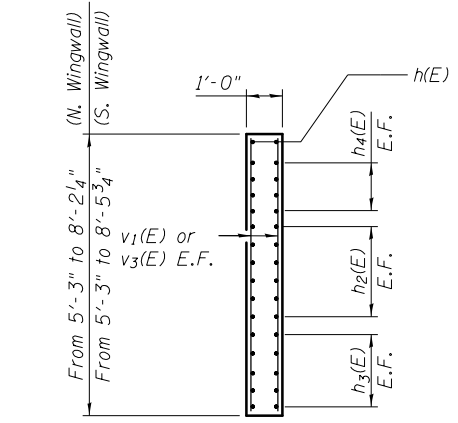
* Epoxy grout #5 h₃(E) bars in 9" (min.) drilled holes according to Article 584 of the Standard Specifications.



SECTION A-A
Existing vertical reinforcement to remain, typ. U.N.O.



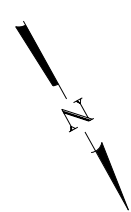
PLAN



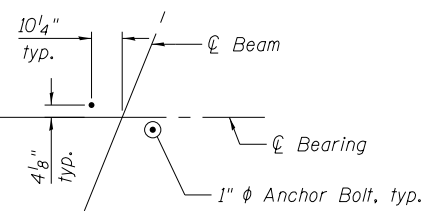
SECTION B-B

BILL OF MATERIAL

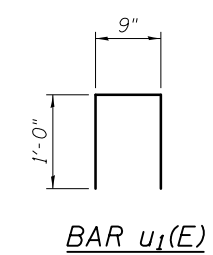
Bar	No.	Size	Length	Shape	
h(E)	4	#5	10'-0"		
h ₁ (E)	2	#4	33'-5"		
h ₂ (E)	24	#5	12'-10"		
h ₃ (E)	20	#7	9'-3"		
h ₄ (E)	16	#5	8'-3"		
p ₁ (E)	10	#7	33'-5"		
s ₂ (E)	33	#5	11'-0"	□	
s ₃ (E)	2	#5	11'-5"	□	
u ₁ (E)	6	#6	10'-6"	□	
u ₂ (E)	34	#5	2'-9"	□	
v ₁ (E)	4	#5	6'-0"		
v ₂ (E)	44	#5	13'-1"		
Concrete Structures				Cu. Yd.	15.9
Reinforcement Bars, Epoxy Coated				Pound	2,650



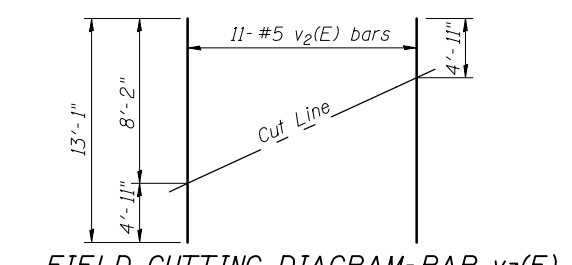
1" φ Anchor Bolt, typ. See Detail A for location



DETAIL A



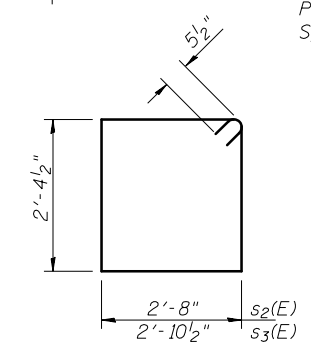
BAR u₁(E)



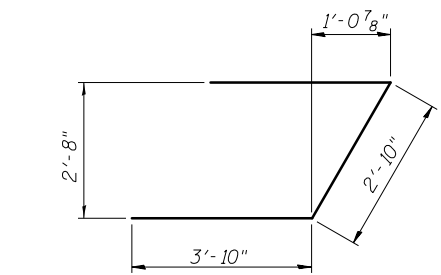
FIELD CUTTING DIAGRAM-BAR v₃(E)

Order v₂(E) full length. Cut as shown and use remainder of bars in opposite face.

** Cut v₁(E) and v₂(E) bars in field to fit in North Wingwall.



BARS s₂(E) & s₃(E)



BAR u₂(E)

Notes:
Pour steps monolithically with cap.
Space reinforcements in cap to miss anchor bolts.

FILENAME: F:\31319_Bldg\st\Drawings\CADD\Sheets\09901B1-099036-017-West-abutment.dgn



USER NAME	= tborges	DESIGNED	- KO	REVISED	
		CHECKED	- BCM	REVISED	
PLOT SCALE	= N/A	DRAWN	- KO	REVISED	
PLOT DATE	= 3/31/2014	CHECKED	- 8/23/2012	REVISED	

STATE OF ILLINOIS
DEPARTMENT OF TRANSPORTATION

WEST ABUTMENT
STRUCTURE NO. 099-0181

SHEET NO. S17 OF S20 SHEETS

F.A.I. RTE.	SECTION	COUNTY	TOTAL SHEETS	SHEET NO.
55	99-2HB-3I-3	WILL	87	55
CONTRACT NO. 60X60				
ILLINOIS FED. AID PROJECT				