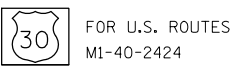


ROUTE MARKERS



FOR U.S. ROUTES
M1-40-2424



FOR ILLINOIS ROUTES
M1-50-2424



R.R. UNMARKED ROUTES
SPECIAL 24" x 18" VARIABLE
4" BLACK LETTERS ON WHITE
REFLECTIVE BACKGROUND

ARROWS SIGNS



M5-1L-2115



M5-1R-2115



M6-1-2115



M6-3-2115

CARDINAL DIRECTION & DETOUR SIGNS



M3-1-2412



M3-2-2412



M3-3-2412

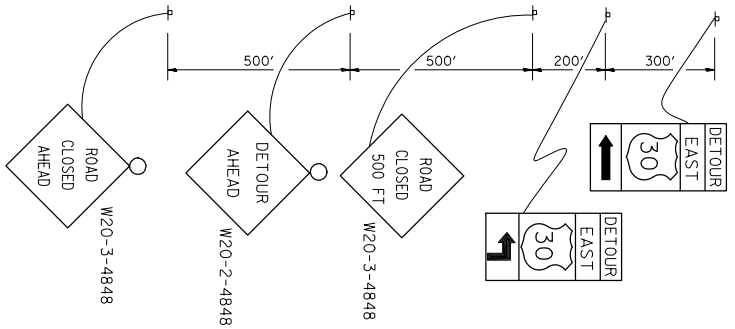


M3-4-2412

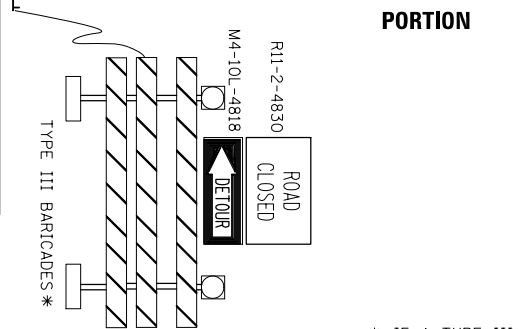


M4-8-2412

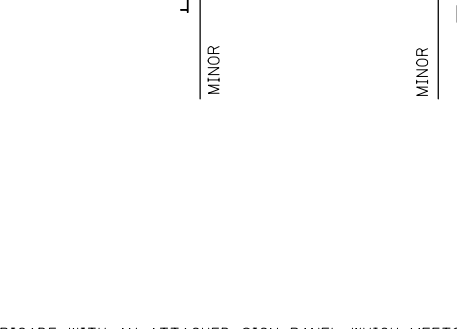
STATE ROUTE



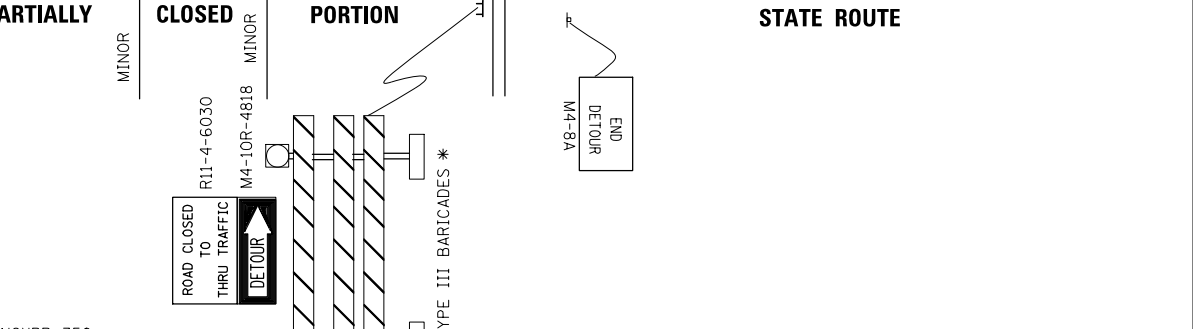
COMPLETELY CLOSED PORTION



PARTIALLY CLOSED PORTION



STATE ROUTE



* IF A TYPE III BARRICADE WITH AN ATTACHED SIGN PANEL WHICH MEETS NCHRP 350 REQUIREMENTS IS NOT AVAILABLE, THE SIGNS SHALL BE MOUNTED, ABOVE THE BARRICADES, ON SEPARATE SIGNS SUPPORTS THAT MEET NCHRP 350 REQUIREMENTS.

FILE NAME = F:\3-1319_Bldggett\Drawings\C4005\sheet5\1168536-ahf-dst.tbl.dgn

USER NAME = tborjes	DESIGNED -	REVISED - 10-18-02
	DRAWN -	REVISED - R. BORO 09-14-09
PLOT SCALE = 100.00' / in.	CHECKED -	REVISED -
PLOT DATE = 3/31/2014	DATE -	REVISED -

**STATE OF ILLINOIS
DEPARTMENT OF TRANSPORTATION**

DETOUR SIGNING FOR CLOSING STATE HIGHWAYS	
SCALE: NONE	SHEET NO. 1 OF 1 SHEETS STA. TO STA.

F.A.I. RTE.	SECTION	COUNTY	TOTAL SHEETS	SHEET NO.
55	99-2HB-3I-3	WILL	87	64
TC-21		CONTRACT NO. 60X60		
FED. ROAD DIST. NO. 1 ILLINOIS FED. AID PROJECT				