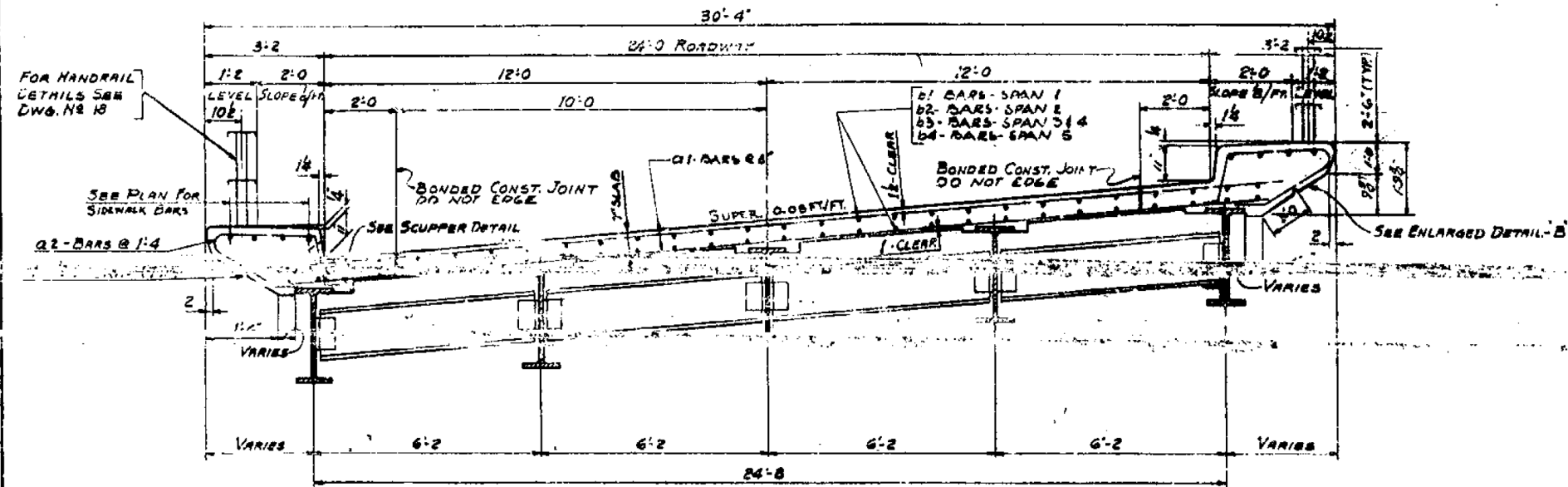


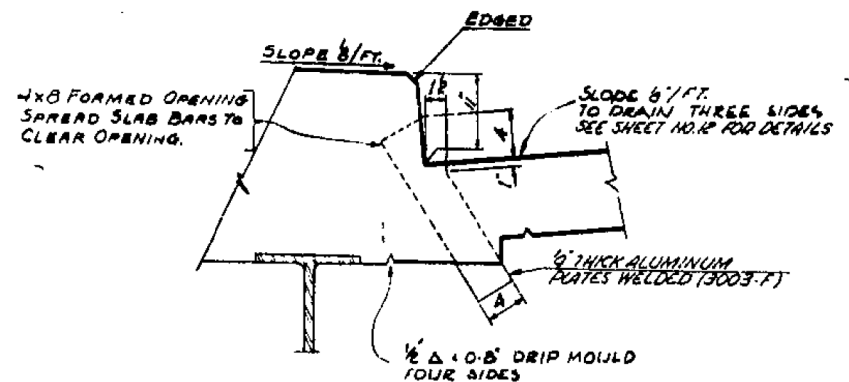
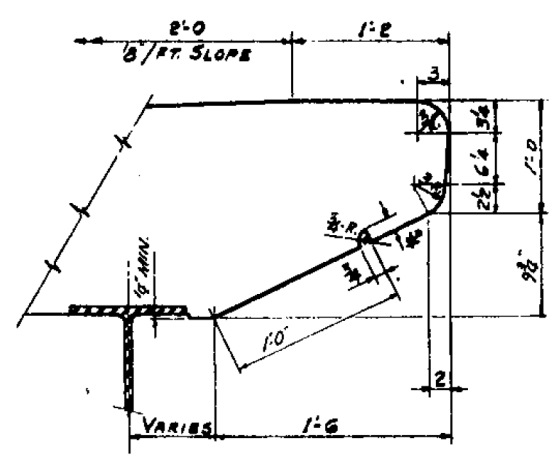
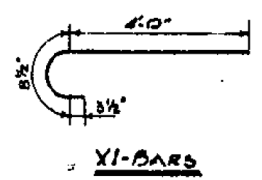
F.A.I. RTE. NO.	SECTION	COUNTY	TOTAL SHEETS	SHEET NO.
55	99-2HB-3	WILL	57	13
FEDERAL ROAD DISTRICT NO. 7		ALUMINUM	PROJ.	



RADIAL CROSS SECTION

BAR SCHEDULE					
BAR NO.	SIZE	LENGTH	SPACING	NAME	
Q1	7/8"	5	27'-4"	0'-8"	
Q2	3/4"	4	7'-9"	1'-4"	
Q3	1/2"	4	84'-6"	1'-0"	
Q4	1/2"	4	85'-1"	1'-0"	
Q5	1/2"	4	88'-3"	1'-0"	
Q6	1/2"	4	20'-0"	1'-0"	
Q7	1/2"	2	2'-0"	1'-0"	

SUPERSTRUCTURE QUANTITIES	
CLASS 'X' CONCRETE	2203-CU.YDS.
REINFORCEMENT (Q1-Q6)	95350-LBS.



SCUPPER DETAIL
FOR LOCATIONS SEE FLOOR PLAN SHEET NO. 12

EXISTING STRUCTURAL PLAN SHEETS
"FOR REFERENCE USE ONLY"

CONSOER, TOWNSEND & ASSOCIATES
CONSULTING ENGINEERS CHICAGO, ILLINOIS

ILLINOIS DIVISION OF HIGHWAYS
BLODGETT ROAD OVER FAI-55
(U.S. 66) SECTION 99-2HB-3
WILL COUNTY

SUPERSTRUCTURE DETAILS

DESIGNED	DRAWN	CHECKED	REVIEWED	DATE	REVISION
E.A.A.	F.E.D.	H.S.M.	5/22/59		

FILE NAME = F:\3-1319-Bldg\1\Drawings\CADD\Sheets\0160636-int-E-Pln.dgn

BLOOM COMPANIES, LLC
Infrastructure Development and Design
600 W. Fulton Street, Suite 701 • Chicago, IL 60661
Phone: (312) 676-8500 Fax: (312) 676-8500

USER NAME = tborjes	DESIGNED - NA	REVISED -
PLOT SCALE = 2.0000" / 1"	DRAWN - NA	REVISED -
PLOT DATE = 3/31/2014	CHECKED - NA	REVISED -
	DATE - NA	REVISED -

STATE OF ILLINOIS
DEPARTMENT OF TRANSPORTATION

EXISTING STRUCTURAL PLAN SHEETS			
SN 099-0182			
SCALE: N.T.S.	SHEET	OF SHEETS	STA. TO STA.

F.A.I. RTE.	SECTION	COUNTY	TOTAL SHEETS	SHEET NO.
55	99-2HB-31-3	WILL	87	78
CONTRACT NO. 60X60				ILLINOIS FED. AID PROJECT