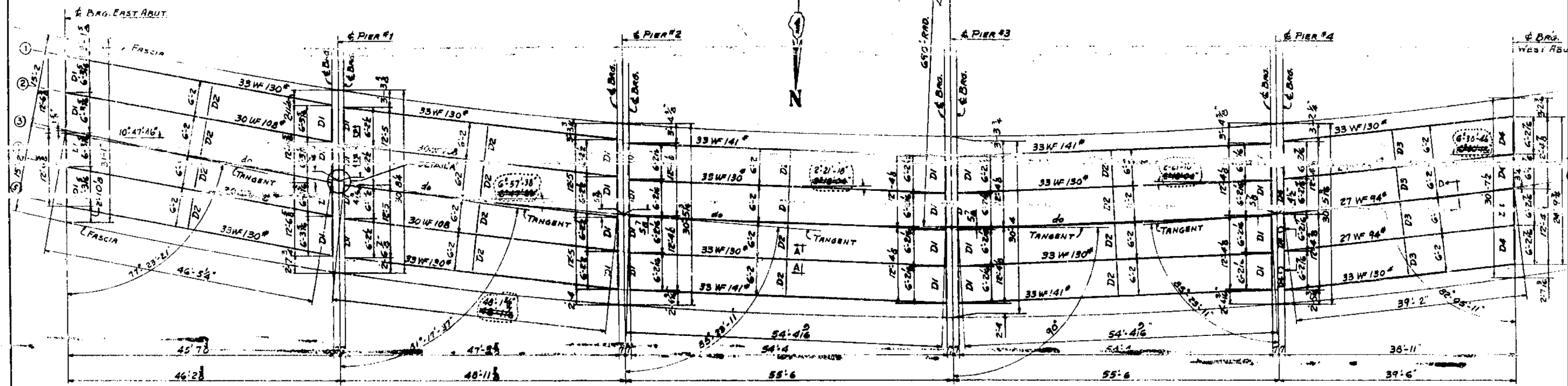
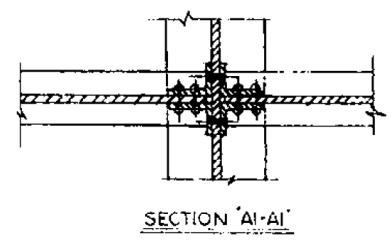


F.A.I. R.T.E. NO.	SECTION	COUNTY	TOTAL SHEETS	SHEET NO.
55	99-2HB3	WILL	57	15
FEDERAL AID DISTRICT NO. 7				

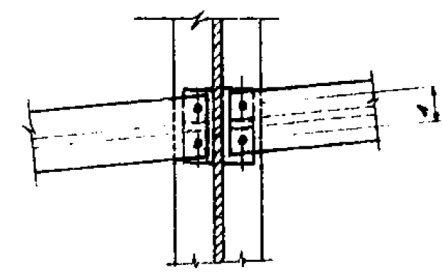


FRAMING PLAN

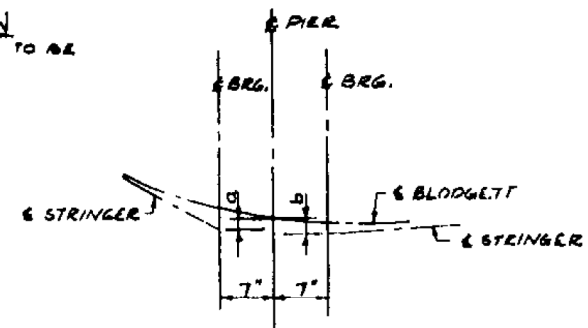
ALL INTERIOR DIAPHRAGMS TO BE PLACED AT MIDSPAN.



SECTION 'AI-AI'

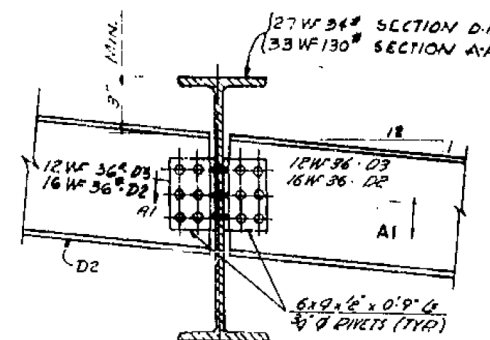


SECTION 'BI-BI'

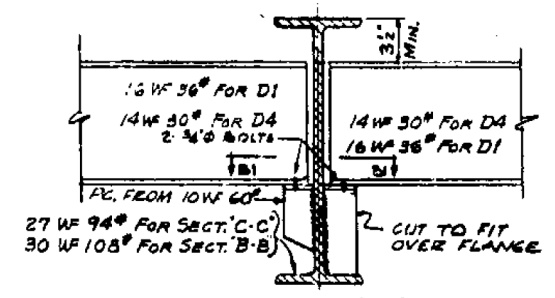


DETAIL A
(TYP ALL PIERS)

DEAD LOAD DEFLECTION										
STRINGERS	SPAN #1		SPAN #2		SPAN #3		SPAN #4		SPAN #5	
1 & 5	1/2	1/2	1/2	1/2	1/2	1/2	1/2	1/2	1/2	1/2
2 TO 4	2	2	2	2	2	2	2	2	2	2

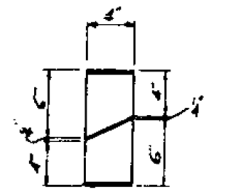


SECTION A-A
SECTION D-D
TYPICAL FOR INTERIOR DIAPHRAGMS



SECTION 'B-B'
SECTION 'C-C'
TYPICAL FOR DIAPHRAGMS AT PIERS AND ABUTS.

LOCATION	a	b
PIER #1	11 1/2	4 1/2
PIER #2	5 1/2	5 1/2
PIER #3	5 1/2	5 1/2
PIER #4	5 1/2	4 1/2



METHOD OF CUTTING 10 WF 60

**EXISTING STRUCTURAL PLAN SHEETS
"FOR REFERENCE USE ONLY"**

STRUCTURAL STEEL 173,491 LBS.
CONSOER, TOWNSEND & ASSOCIATES
CONSULTING ENGINEERS CHICAGO, ILLINOIS
ILLINOIS DIVISION OF HIGHWAY
BLODGETT ROAD OVER FAI-55
(US66) SECTION 99-2HB-3
WILL COUNTY

DESIGNED	DRAWN	CHECKED	REVIEWED	DATE
D.M.R.	ETA	E.C.D.	H.S.M.	5-22-59

BLOOM COMPANIES, LLC
Infrastructure Development and Engineering
600 W. Fulton Street, Suite 701 • Chicago, IL 60661
Phone: (312) 676-8800 Fax: (312) 676-8800

USER NAME = tborjes	DESIGNED - NA	REVISED -
PLOT SCALE = 2.0000" / 1'	DRAWN - NA	REVISED -
PLOT DATE = 3/31/2014	CHECKED - NA	REVISED -
	DATE - NA	REVISED -

STATE OF ILLINOIS
DEPARTMENT OF TRANSPORTATION

EXISTING STRUCTURAL PLAN SHEETS
SN 099-0182

SCALE: N.T.S. SHEET OF SHEETS STA. TO STA.

F.A.I. R.T.E.	SECTION	COUNTY	TOTAL SHEETS	SHEET NO.
55	99-2HB-31-3	WILL	87	79
CONTRACT NO. 60X60				
ILLINOIS FED. AID PROJECT				