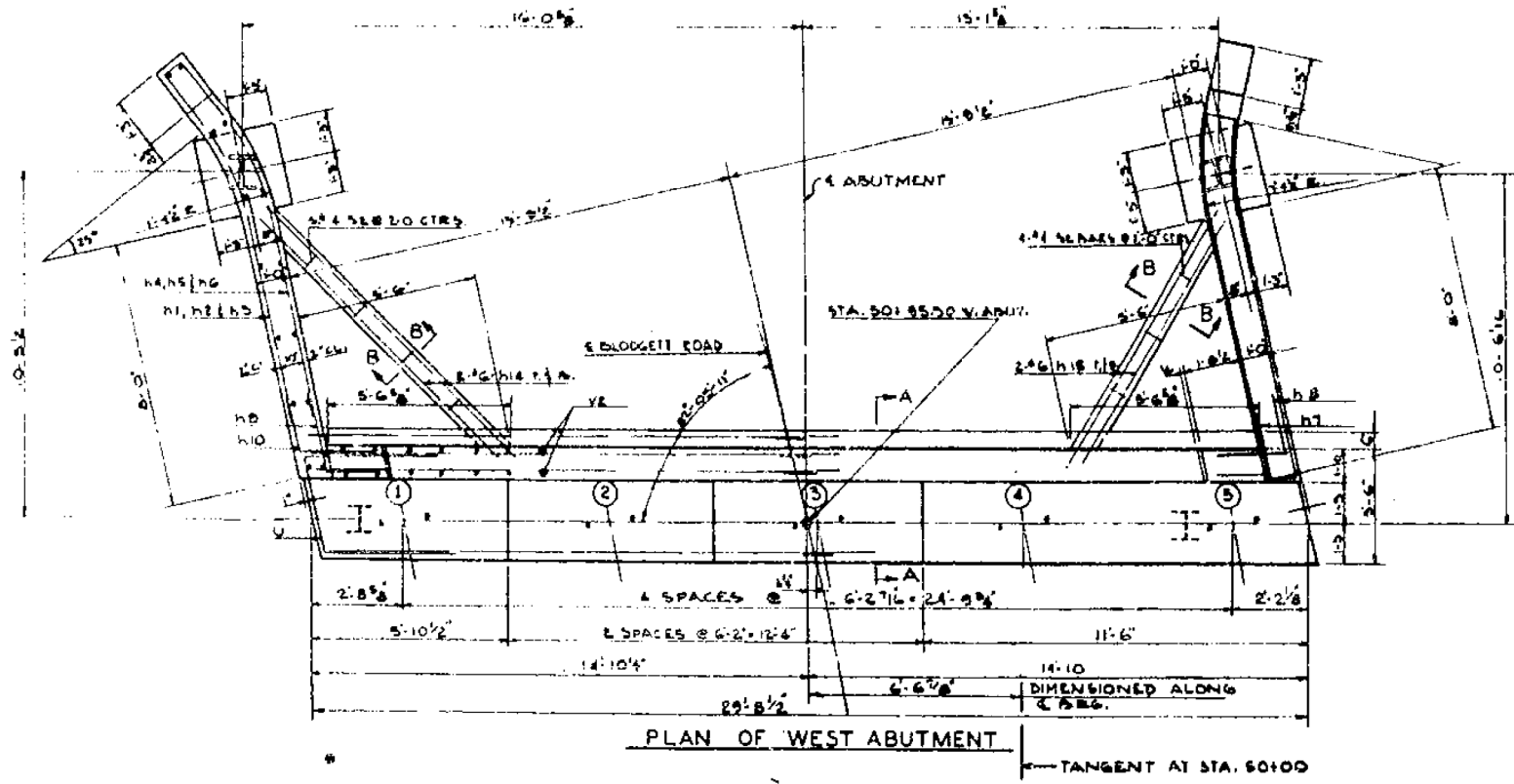


PILE DATA WEST ABUT.
 CAPACITY 30 TONS
 EST. LENGTH 42'
 (2) INCLUDES ONE
 TEST PILE.

BAR SCHEDULE FOR TWO (2) ABUTS.

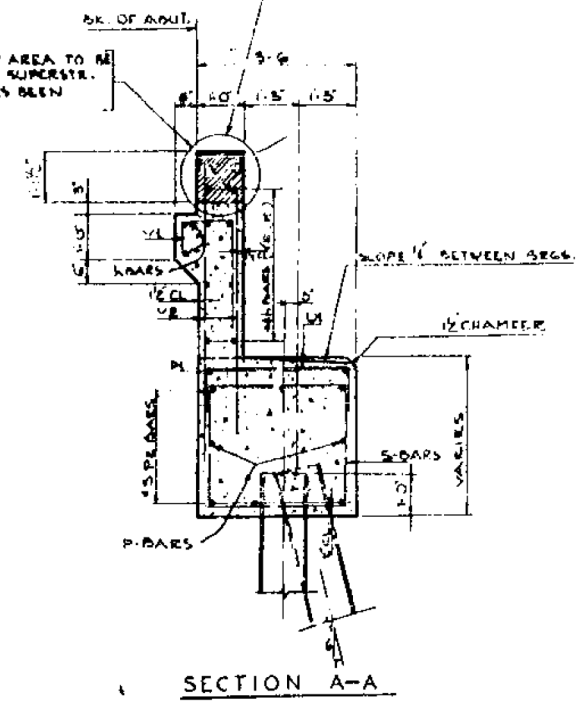
ABUT.	BAR	No.	SIZE	LENGTH	SPACING	SHAPE
EW	h	40	4	15'-0"	As Shown	---
EW	h	4	5	10'-6"	As Shown	---
EW	h	4	5	11'-2"	As Shown	---
EW	h	16	5	12'-6"	As Shown	---
EW	h	4	5	11'-6"	As Shown	---
EW	h	4	5	12'-2"	As Shown	---
EW	h	16	5	13'-6"	As Shown	---
EW	h	12	4	4'-2"	As Shown	---
EW	h	12	4	4'-1"	As Shown	---
EW	h	12	4	4'-1"	As Shown	---
EW	h	4	4	8'-8"	As Shown	---
EW	h	16	5	7'-0"	As Shown	---
EW	h	16	5	8'-0"	As Shown	---
EW	h	8	6	10'-6"	As Shown	---
EW	h	8	6	8'-6"	As Shown	---
EW	p	32	7	16'-6"	As Shown	---
EW	p	20	3	6'-0"	As Shown	---
EW	s	56	4	12'-6"	As Shown	---
EW	s	12	4	9'-6"	As Shown	---
EW	s	14	3	3'-3"	As Shown	---
EW	u	6	6	11'-8"	As Shown	---
EW	u	30	5	6'-3"	As Shown	---
EW	v	56	4	2'-6"	As Shown	---
EW	v	56	4	6'-0"	As Shown	---
EW	v	56	4	4'-3"	As Shown	---
EW	v	24	4	3'-0"	As Shown	---
EW	v	16	4	5'-9"	As Shown	---

**EXISTING STRUCTURAL PLAN SHEETS
 "FOR REFERENCE USE ONLY"**



Class X Concrete for this portion is included in superstructure quantities shown on sheet No. 13

CROSS HATCHED AREA TO BE POURED AFTER SUPERSTR. FORMWORK HAS BEEN REMOVED.



QUANTITIES TWO (2) ABUTMENTS

Driving Steel Piles (100#) Lin. Ft.	189
Class X Concrete Cu. Yds.	413
Reinforcement bars Lbs.	4,435
Furnishing Steel Piles (100#) Lin. Ft.	159
Test Piles	2

WORK THIS SHEET WITH SHEET 19
CONSOER, TOWNSEND & ASSOCIATES
 CONSULTING ENGINEERS CHICAGO, ILLINOIS

ILLINOIS DIVISION OF HIGHWAYS
 BLDGETT ROAD OVER FAI-5
 US66 SECTION 99-2HB-3
 WILL COUNTY

WEST ABUTMENT DETAILS

DESIGNED	D.M.P.	CHECKED	D.M.P.	DATE	3/31/2014
APPROVED	F.E.D.	DATE	5-22-59		