

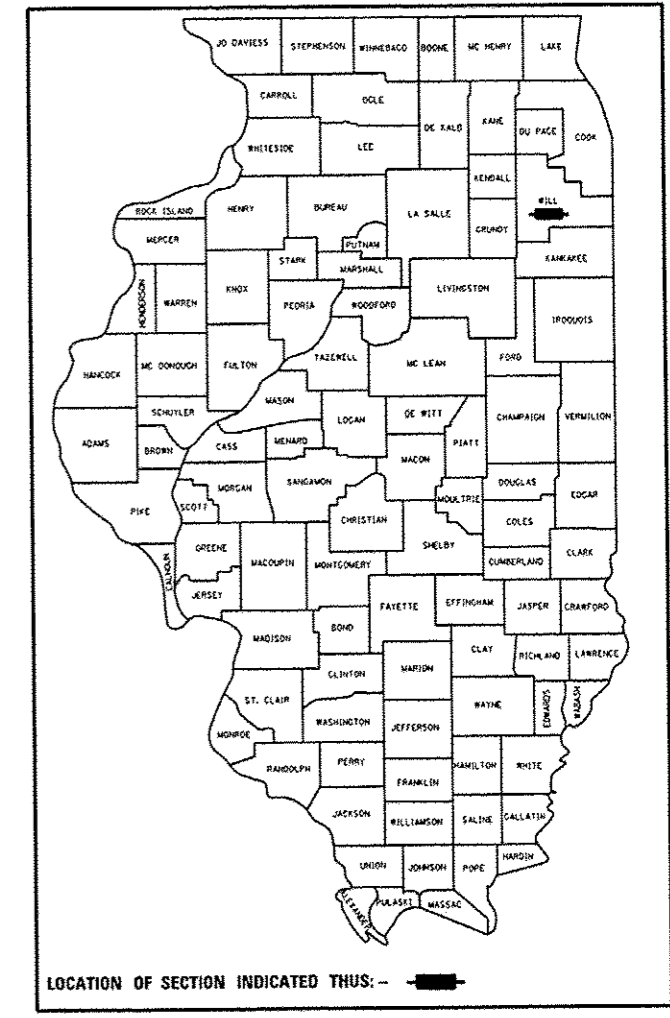
F.A. RTE.	SECTION	COUNTY	TOTAL SHEETS	SHEET NO.
VAR.	2014-028RS	WILL	26	1
		ILLINOIS	CONTRACT NO. 60Y14	

STATE OF ILLINOIS  
DEPARTMENT OF TRANSPORTATION  
DIVISION OF HIGHWAYS

**PROPOSED  
HIGHWAY PLANS**

FOR INDEX OF SHEETS, SEE SHEET NO. 2

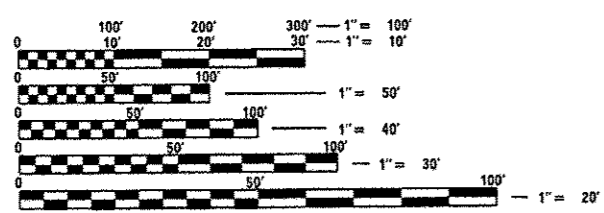
D-91-304-14



VARIOUS ROUTES  
SECTION: 2014-028RS  
VARIOUS LOCATIONS IN WILL COUNTY  
INTERMITTENT RESURFACING  
WILL COUNTY  
C-91-304-14

FOR GENERAL LOCATION MAP, SEE SHEET NO. 4

THIS PROJECT IS LOCATED IN:  
THE VILLAGE OF CHANNAHON  
THE VILLAGE OF MANHATTAN  
THE VILLAGE OF OSWEGO  
THE VILLAGE OF PLAINFIELD  
THE VILLAGE OF ROMEOVILLE  
THE VILLAGE OF SHOREWOOD  
THE CITY OF AURORA  
THE CITY OF BRAIDWOOD  
THE CITY OF CREST HILL  
THE CITY OF JOLIET  
THE CITY OF WILMINGTON



FULL SIZE PLANS HAVE BEEN PREPARED USING STANDARD ENGINEERING SCALES. REDUCED SIZED PLANS WILL NOT CONFORM TO STANDARD SCALES. IN MAKING MEASUREMENTS ON REDUCED PLANS, THE ABOVE SCALES MAY BE USED.

J.U.L.I.E.  
JOINT UTILITY LOCATION INFORMATION FOR EXCAVATION  
1-800-892-0123  
OR 811

PROJECT ENGINEER: DANIEL WILGREEN (847) 705-4240  
PROJECT MANAGER: KEN ENG (847) 705-4247

CONTRACT NO. 60Y14

STATE OF ILLINOIS  
DEPARTMENT OF TRANSPORTATION  
DIVISION OF HIGHWAYS

SUBMITTED April 3 2014  
*[Signature]*  
DEPUTY DIRECTOR OF HIGHWAYS, REGION ENGINEER

May 9 2014  
*[Signature]* D. Baranzelli PE, PE  
ENGINEER OF DESIGN AND ENVIRONMENT

May 9 2014  
*[Signature]* OSMAN PE, PE  
DIRECTOR OF HIGHWAYS, CHIEF ENGINEER

PRINTED BY THE AUTHORITY  
OF THE STATE OF ILLINOIS