

06-13-14 LETTING ITEM 043

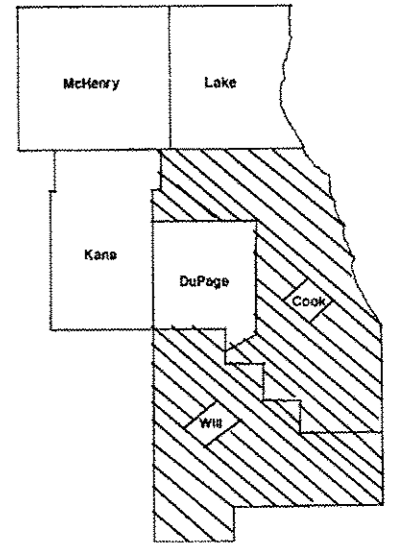
| ROUTE | SECTION | COUNTY | TOTAL SHEETS | SHEET NUMBER |
|---------|--------------|-------------|--------------|--------------|
| VARIOUS | 2014-033 DTR | COOK & WILL | 7 | 1 |

CONTRACT 60Y19
D-91-322-14

STATE OF ILLINOIS
DEPARTMENT OF TRANSPORTATION
DIVISION OF HIGHWAYS
DISTRICT ONE

PROPOSED HIGHWAY PLANS

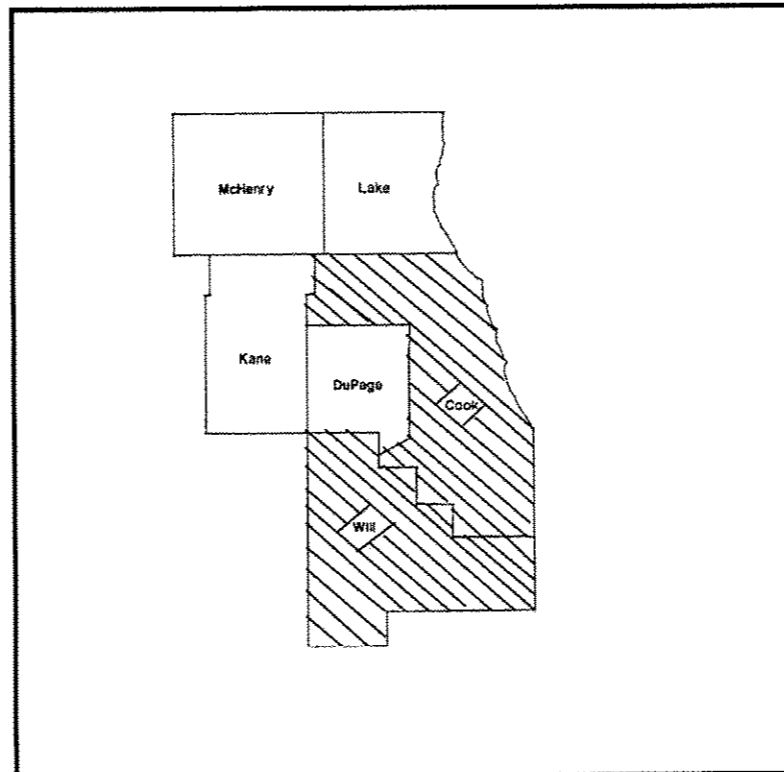
ROUTE: VARIOUS
SECTION 2014-033DTR
DEAD TREE REMOVAL
COOK & WILL COUNTIES
C-91-322-14



LOCATION OF IMPROVEMENT INDICATED THUS:



IMPROVEMENT IS IN VARIOUS
LOCATIONS WITHIN DISTRICT
ONE



STATE OF ILLINOIS
DEPARTMENT OF TRANSPORTATION
DIVISION OF HIGHWAYS

SUBMITTED: April 4 2014
John Fortmann
DEPUTY DIRECTOR OF HIGHWAYS, REGION ENGINEER

May 9 2014
John D. Baranzelli P.E.
acting ENGINEER OF DESIGN AND ENVIRONMENT

May 9 2014
Omer Osman P.E.
DIRECTOR OF HIGHWAYS, CHIEF ENGINEER

**PRINTED BY THE AUTHORITY
OF THE STATE OF ILLINOIS**

J.U.L.I.E.: JOINT UTILITY LOCATION
INFORMATION FOR EXCAVATION
(800) 892-0123 OR 811

CONTRACT 60Y19

DISTRICT ONE BUREAU OF MAINTENANCE: J. STUMPNER
MAINTENANCE LANDSCAPE DESIGNER: R. WANNER / T. JACKSON (847) 705-4171

| ROUTE | SECTION | COUNTY | TOTAL SHEETS | SHEET NUMBER |
|---------|-------------|-------------|--------------|--------------|
| VARIOUS | 2014-033DTR | COOK & WILL | 7 | 2 |

CONTRACT 60Y19

INDEX OF SHEETS

- 1) COVER SHEET
- 2) INDEX OF SHEETS, STATE STANDARDS, GENERAL NOTES
- 3) SUMMARY OF QUANTITIES
- 4) SAMPLE STANDARD WORK ORDER
- 5) SAMPLE EXPEDITED WORK ORDER
- 6) TC-10 TRAFFIC CONTROL AND PROTECTION FOR SIDE ROADS, INTERSECTIONS, AND DRIVEWAYS
- 7) TC-17 TRAFFIC CONTROL DETAIL FOR FREEWAY SHOULDER CLOSURES AND PARTIAL RAMP CLOSURES

STATE STANDARDS

| | | | | |
|-----------|-----------|-----------|-----------|-----------|
| 701001-02 | 701006-05 | 701101-04 | 701106-02 | 701201-04 |
| 701301-04 | 701421-06 | 701501-06 | 701601-09 | 701901-03 |

GENERAL NOTES

TREE REMOVAL, ACRE includes removal of trees, shrubs, bushes, saplings, logs, other vegetation, and stumps of a diameter less than 6 inches. All trees and other stumps within the Right of way shall be removed to a depth of not less than **6 inches** below the elevation of the subgrade, the finished earth surface, or the ground line.

TREE REMOVAL 6-15 & over 15 inches will not require removal of stumps.

ILLINOIS DEPARTMENT OF TRANSPORTATION

INDEX OF SHEETS

DEAD TREE REMOVAL

| | | | | |
|---------|--------------|-------------|--------------|--------------|
| ROUTE | SECTION | COUNTY | TOTAL SHEETS | SHEET NUMBER |
| VARIOUS | 2014-033 DTR | COOK & WILL | 7 | 3 |

CONTRACT 60Y19

SUMMARY OF QUANTITIES

| PAY ITEM | DESCRIPTION | UNIT | 100% State | | TOTAL |
|----------|--------------------------------------|--------|-------------------------------------------|-------------------------------------------|-------|
| | | | <i>0031</i> CONTRACT MAINT COOK CO. | <i>0031</i> CONTRACT MAINT WILL CO. | |
| 20100110 | TREE REMOVAL(6 TO 15 UNITS DIAMETER) | UNIT | 3000 | 2000 | 5000 |
| 20100210 | TREEREMOVAL(OVER 15UNITS DIAMETER) | UNIT | 3000 | 2000 | 5000 |
| 20100500 | TREE REMOVAL , ACRES | ACRE | 3 | 2 | 5 |
| 20101300 | TREE PRUNING (1 TO 10 INCH DIAMETER) | EACH | 15 | 10 | 25 |
| 20101350 | TREE PRUNING (OVER 10 INCH DIAMETER) | EACH | 15 | 10 | 25 |
| 67100100 | MOBILIZATION | L SUM | 1 | 0 | 1 |
| X0325222 | WEED CONTROL, BASAL TREATMENT | GALLON | 3 | 2 | 5 |
| X2010100 | TREE LIMB REMOVAL 4-10 INCHES | EACH | 40 | 20 | 60 |
| X2010200 | TREE LIMB REMOVAL OVER 10 INCHES | EACH | 40 | 20 | 60 |
| X2010310 | TREE REMOVAL SPECIAL | UNIT | 1,300 | 700 | 2000 |
| X2010400 | STUMP REMOVAL ONLY | UNIT | 130 | 70 | 200 |
| Z0064800 | SELECTIVE CLEARING | UNIT | 4 | 2 | 6 |


12

ILLINOIS DEPARTMENT OF TRANSPORTATION

SUMMARY OF QUANTITIES

DEAD TREE REMOVAL

| | | | | |
|---------|-------------|-------------|--------------|--------------|
| ROUTE | SECTION | COUNTY | TOTAL SHEETS | SHEET NUMBER |
| VARIOUS | 2014-033DTR | COOK & WILL | 7 | 5 |

| | |
|--------------------------------------------------------------------------------------------------------------------------------|---------------------------------|
|  Illinois Department of Transportation | Tree Removal Work Order Number: |
| | ID Number: |

CONTRACT 60Y19

***** EXPEDITED REMOVAL *****

Date: _____ Time: _____ Contract: _____

| | | | | |
|--------|--|--|------------------------|--------------|
| County | | | Work Order Prepared By | Team Section |
| | | | | |

Marked Route: _____ Municipality: _____ Side of Road: _____
 Location: _____

Tree tape was used to measure the diameter of the trees.

| PAY ITEM | TREE # | QUANTITY | 24 HOUR | 48 HOUR | TOTAL |
|--------------------------------|--------|----------|---------|---------|-------|
| LIMB REMOVAL (EACH) 4"-10" | | | 3X | 2.5X | |
| LIMB REMOVAL (EACH) >10" | | | 3X | 2.5X | |
| TREE REMOVAL (UNITS) 6"-15" | | | 2X | 1.5X | |
| TREE REMOVAL (UNITS) >15" | | | 2X | 1.5X | |

Special Instructions _____

Reason for removal: _____

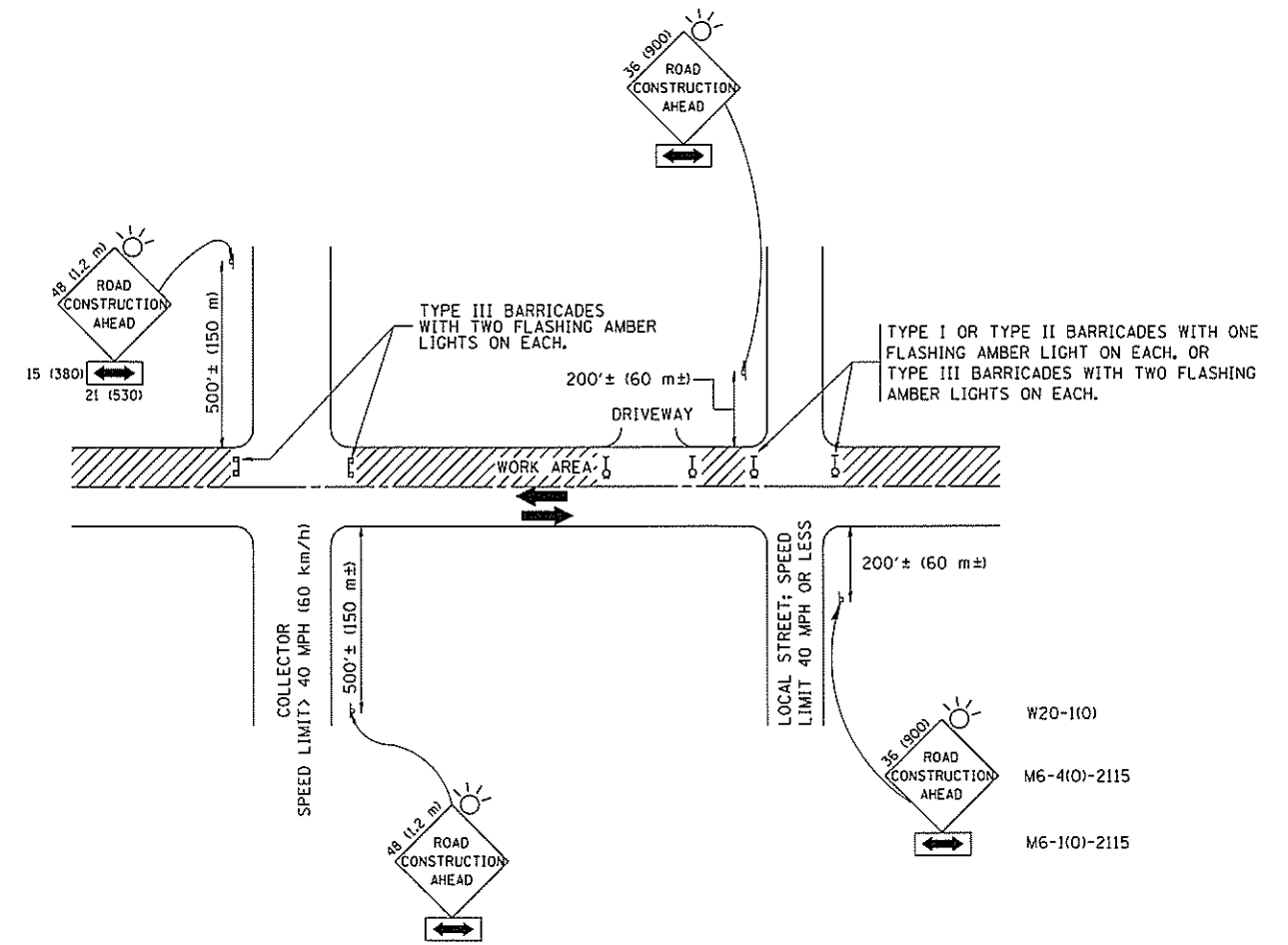
| | |
|----------------------------------------|---------------------|
| AUTHORIZATION OF WORK | |
| Resident Engineer/Technician Signature | |
| Date/Time work order issued | Contractor Initials |

| | |
|----------------------------------------|--|
| CERTIFICATION OF COMPLETED WORK | |
| Contractor Signature | |
| Date/Time work order completed | |

| | | |
|------------------------|-------------|-------|
| OFFICE USE ONLY | | |
| Measured in Place by: | Initials(s) | Date |
| Calculated by: | _____ | _____ |
| Checked by: | _____ | _____ |

| | |
|------------------------------------------------------------|--|
| INSPECTION AND ACCEPTANCE OF COMPLETED WORK | |
| Inspector Signature | |
| Date work order Inspected and Accepted | |
| This is to certify that the work order has been completed. | |

ILLINOIS DEPARTMENT OF TRANSPORTATION
 SAMPLE EXPEDITED WORK ORDER
 DEAD TREE REMOVAL



TRAFFIC CONTROL AND PROTECTION FOR SIDE ROADS, INTERSECTIONS, AND DRIVEWAYS

NOTES:

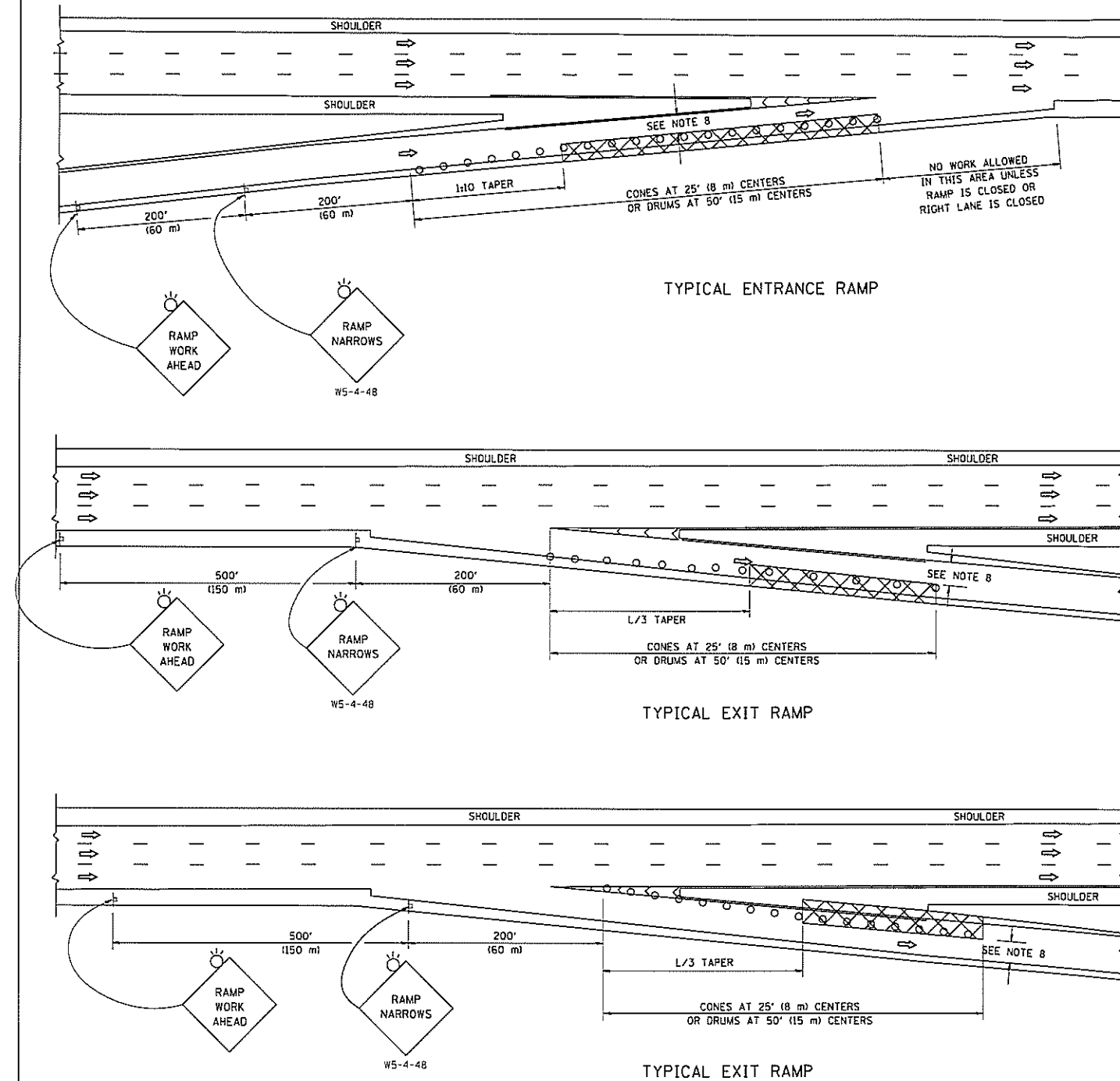
- A. FOR NO LANE RESTRICTION ON THE SIDE ROAD OR DRIVEWAYS
 1. SIDE ROAD WITH A SPEED LIMIT OF 40 MPH (60 km/h) OR LESS AS SHOWN ON THE DRAWING AND AS DIRECTED BY THE ENGINEER:
 - a) ONE ROAD CONSTRUCTION AHEAD SIGN 36 x 36 (900x900) WITH A FLASHER AND FLAG MOUNTED ON IT APPROXIMATELY 200' (60 m) IN ADVANCE OF THE MAIN ROUTE.
 - b) THE CLOSED PORTION OF THE MAIN ROUTE SHALL BE PROTECTED BY BLOCKING WITH TYPE I, TYPE II OR TYPE III BARRICADES, 1/3 OF THE CROSS SECTION OF THE CLOSED PORTION.
 2. SIDE ROAD WITH A SPEED LIMIT GREATER THAN 40 MPH (60 km/h) AS SHOWN ON THE DRAWING AND AS DIRECTED BY THE ENGINEER:
 - a) ONE ROAD CONSTRUCTION AHEAD SIGN 48 x 48 (1,2 m x 1,2 m) WITH A FLASHER MOUNTED ON IT APPROXIMATELY 500' (150 m) IN ADVANCE OF THE MAIN ROUTE.
 - b) THE CLOSED PORTION OF THE MAIN ROUTE SHALL BE PROTECTED BY BLOCKING WITH TYPE III BARRICADES, 1/2 OF THE CROSS SECTION OF THE CLOSED PORTION.
 3. WHEN THE SIDE ROAD LIES BETWEEN THE BEGINNING OF THE MAINLINE SIGNING AND THE WORK ZONE, A SINGLE HEADED ARROW (M6-11) SHALL BE USED IN LIEU OF THE DOUBLE HEADED ARROW (M6-4).
- B. FOR A LANE CLOSURE ON A SIDE ROAD OR DRIVEWAY:

USE APPLICABLE PORTIONS OF THE TYPICAL APPLICATION OF TRAFFIC CONTROL DEVICES (STD. 701501, STD. 701606 OR THE APPROPRIATE STANDARD). THE SPACING OF SIGNS AND BARRICADES SHALL BE ADJUSTED FOR FIELD CONDITIONS AS DIRECTED BY THE ENGINEER. THE DIRECTIONAL ARROW SHALL BE COVERED OR REMOVED WHEN NO LONGER CONSISTENT WITH THE SIDE ROAD LANE CLOSURE.
- C. ADVANCE WARNING SIGNS ARE TO BE OMITTED ON DRIVEWAY UNLESS OTHERWISE NOTED.
- D. THE TRAFFIC CONTROL AND PROTECTION FOR SIDE ROADS, INTERSECTIONS, AND DRIVEWAYS SHALL BE INCIDENTAL TO THE COST OF SPECIFIED TRAFFIC CONTROL STANDARDS OR ITEMS.

All dimensions are in millimeters (inches) unless otherwise shown.

| | | | | | | | | | | | | |
|------------------------------------------|-----------------------------|---------------------------------|------------------------------|-----------------------------------------------------------|----------------------------------------------------------------------------------------|--------------------|-----------|-------------------------------------------------|---------|--------|--------------|-----------|
| FILE NAME = M:\distatd\22x34\tdl0.dgn | USER NAME = gaglionabx | DESIGNED - LHA | REVISED - J. OBERLE 10-18-95 | STATE OF ILLINOIS DEPARTMENT OF TRANSPORTATION | TRAFFIC CONTROL AND PROTECTION FOR SIDE ROADS, INTERSECTIONS, AND DRIVEWAYS | | | F.A. RTE. | SECTION | COUNTY | TOTAL SHEETS | SHEET NO. |
| | PLOT SCALE = 50.000 ' / IN. | DRAWN - | REVISED - A. HOUSEH 03-06-96 | | VAR | Various | Cook/Will | 7 | 6 | | | |
| | PLOT DATE = 1/4/2008 | CHECKED - | REVISED - A. HOUSEH 10-15-96 | | TC-10 | CONTRACT NO. 60419 | | | | | | |
| | DATE - 06-89 | REVISED - T. RAMMACHER 01-06-00 | | SCALE: NONE | SHEET NO. 1 OF 1 SHEETS | STA. | TO STA. | FED. ROAD DIST. NO. 1 ILLINOIS FED. AID PROJECT | | | | |

PARTIAL RAMP CLOSURE DETAILS



SYMBOLS

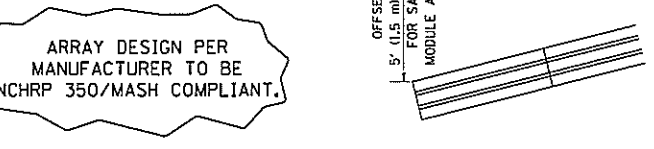
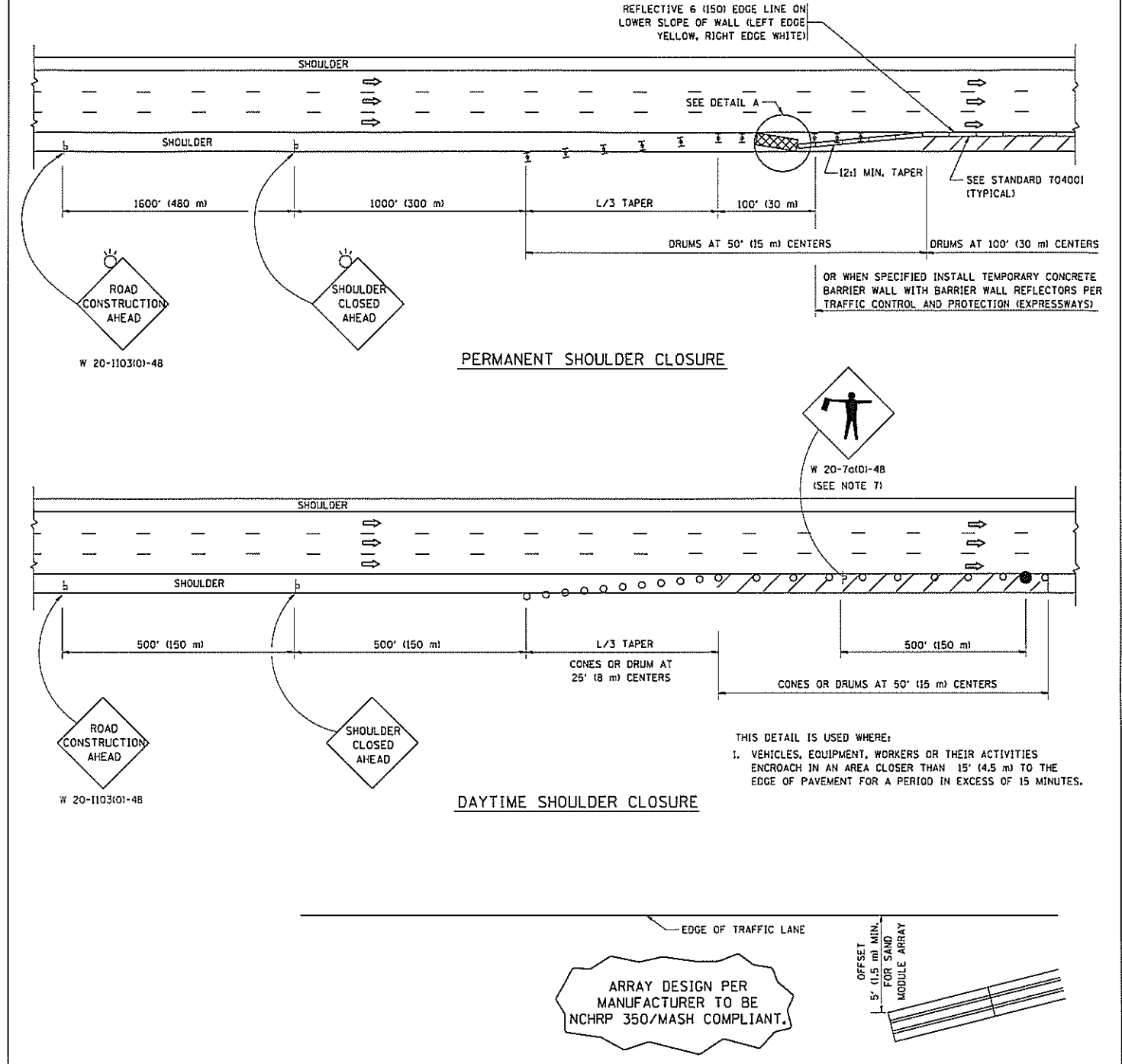
- ACTIVE WORK AREA
- SIGN ON PORTABLE OR PERMANENT SUPPORT
- FLAGGER WITH CONTROL SIGN
- TYPE II BARRICADE OR DRUM WITH STEADY BURN MONO-DIRECTIONAL LIGHT
- CONE, DRUM OR BARRICADE
- IMPACT ATTENUATOR OF TYPE AND TEST LEVEL SPECIFIED

GENERAL NOTES

1. THE "L" DISTANCE EQUALS:

| | |
|--------------------------------------|-------------------------------------------|
| SPEED LIMIT | FORMULAS |
| 45 mph (80 km/h) OR GREATER: | METRIC ENGLISH $L=0.65(W/S)$ $L=(W/S)$ |
| W = WIDTH OF OFFSET IN FEET (METERS) | |
| S = NORMAL POSTED SPEED MPH (KM/H) | |
2. PLASTIC DRUMS WITH HIGH PERFORMANCE REFLECTIVE SHEETING AND STEADY BURNING LIGHTS ARE REQUIRED FOR ALL NIGHTTIME CLOSURES.
3. ALL SIGNS SHALL BE POST MOUNTED IF THE CLOSURE TIME EXCEEDS FOUR DAYS.
4. FLASHING LIGHTS SHALL BE USED DURING THE HOURS OF DARKNESS AND SHALL BE INSTALLED ABOVE THE FIRST TWO SETS OF SIGNS.

SHOULDER CLOSURE DETAILS



DETAIL "A"
IMPACT ATTENUATOR, TEMPORARY
(SEE NOTE 5)

5. THE IMPACT ATTENUATOR, TEMPORARY IS NOT REQUIRED WHEN THE TEMPORARY CONCRETE BARRIER WALL IS PROTECTED BY OR IS TIED INTO THE EXISTING GUARDRAIL. IF OFFSET IS LESS THAN 5 FEET USE NARROW USE TYPE DEVICE TO MEET NCHRP350/MASH.
6. AUTHORIZATION FROM THE DISTRICT'S BUREAU OF TRAFFIC IS REQUIRED FOR ALL FREEWAY CLOSURES.
7. THE FLAGGER AND FLAGGER SIGN ARE REQUIRED AT THE ABOVE WORK SITES WHEN:
 - a. FOUR OR MORE WORK VEHICLES ENTER THE TRAFFIC LANES IN A ONE HOUR PERIOD.
 - b. THE WORK ACTIVITY REQUIRES FREQUENT ENCROACHMENT INTO THE LANE OPEN TO TRAFFIC.
 THE FLAGGER SHALL BE STATIONED APPROXIMATELY 100' (30 m) TO 200' (60 m) IN ADVANCE OF THE WORKERS.
8. 12" MIN. WIDTH TANGENT SECTION
16" MIN. WIDTH CURVE SECTION.

THIS DETAIL IS USED WHERE:
1. VEHICLES, EQUIPMENT, WORKERS OR THEIR ACTIVITIES ENCROACH IN AN AREA CLOSER THAN 15' (4.5 m) TO THE EDGE OF PAVEMENT FOR A PERIOD IN EXCESS OF 15 MINUTES.

ALL DIMENSIONS ARE IN INCHES (MILLIMETERS) UNLESS OTHERWISE SHOWN.

| | | | |
|---------------------------------------------|---------------------|----------------|------------------------|
| FILE NAME = | USER NAME = foatemj | DESIGNED - | REVISED - J.A.F. 12-06 |
| ca:\pwork\work\dot\foatemj\0109315\1c17.dgn | | DRAWN - D.W.S. | REVISED - S.P.B. 01-07 |
| PLOT SCALE = 50.0000' / 1" | | CHECKED - | REVISED - S.P.B. 12-09 |
| PLOT DATE = 7/1/2013 | | DATE - 11-96 | REVISED - M.D. 06-13 |

STATE OF ILLINOIS
DEPARTMENT OF TRANSPORTATION

| | |
|------------------------------------------------------------------------------------|--------------------------------------|
| TRAFFIC CONTROL DETAILS FOR FREEWAY SHOULDER CLOSURES AND PARTIAL RAMP CLOSURES | |
| SCALE: NONE | SHEET NO. 1 OF 1 SHEETS STA. TO STA. |

| | | | |
|---------------------------------------------------|---------|--------------------|-----------------|
| F.A. RTE. | SECTION | COUNTY | TOTAL SHEET NO. |
| VAR | Various | Will/Cook | 7 / 7 |
| TC-17 | | CONTRACT NO. 60419 | |
| FED. ROAD DIST. NO. 1 (ILLINOIS) FED. AID PROJECT | | | |