

FOR INDEX OF SHEETS, SEE SHEET NO. 2

FOR INDEX OF HIGHWAY STANDARDS, SEE SHEET NO. 2

IMPROVEMENT LOCATED WITHIN THE CITY OF ST. CHARLES

STATE OF ILLINOIS DEPARTMENT OF TRANSPORTATION DIVISION OF HIGHWAYS

PROPOSED HIGHWAY PLANS

F.A.P 347 (IL ROUTE 38)

SECTION 2014-042RS

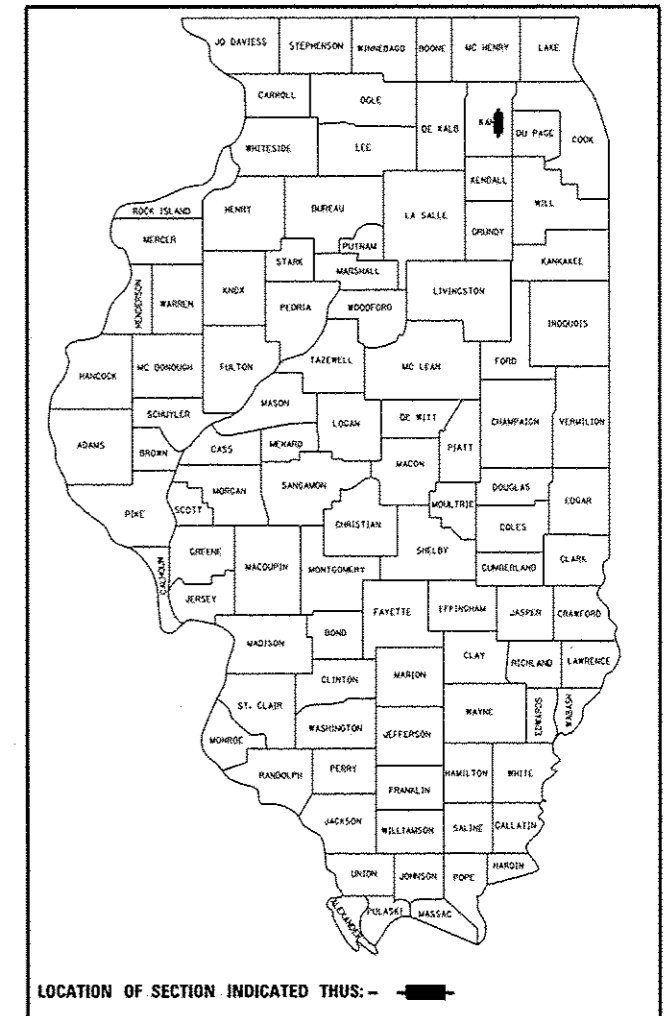
ILLINOIS YOUTH CENTER (INTERNAL ROADS) (WEST OF PECK RD)

RESURFACING (3P)

KANE COUNTY

C-91-374-14

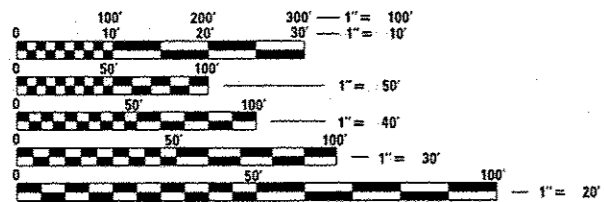
Table with columns: F.A.P. RTE., SECTION, COUNTY, TOTAL SHEETS, SHEET NO., FED. ROAD DIST. NO., ILLINOIS, FED AID PROJECT, D-91-374-14, CONTRACT NO. 60Y37



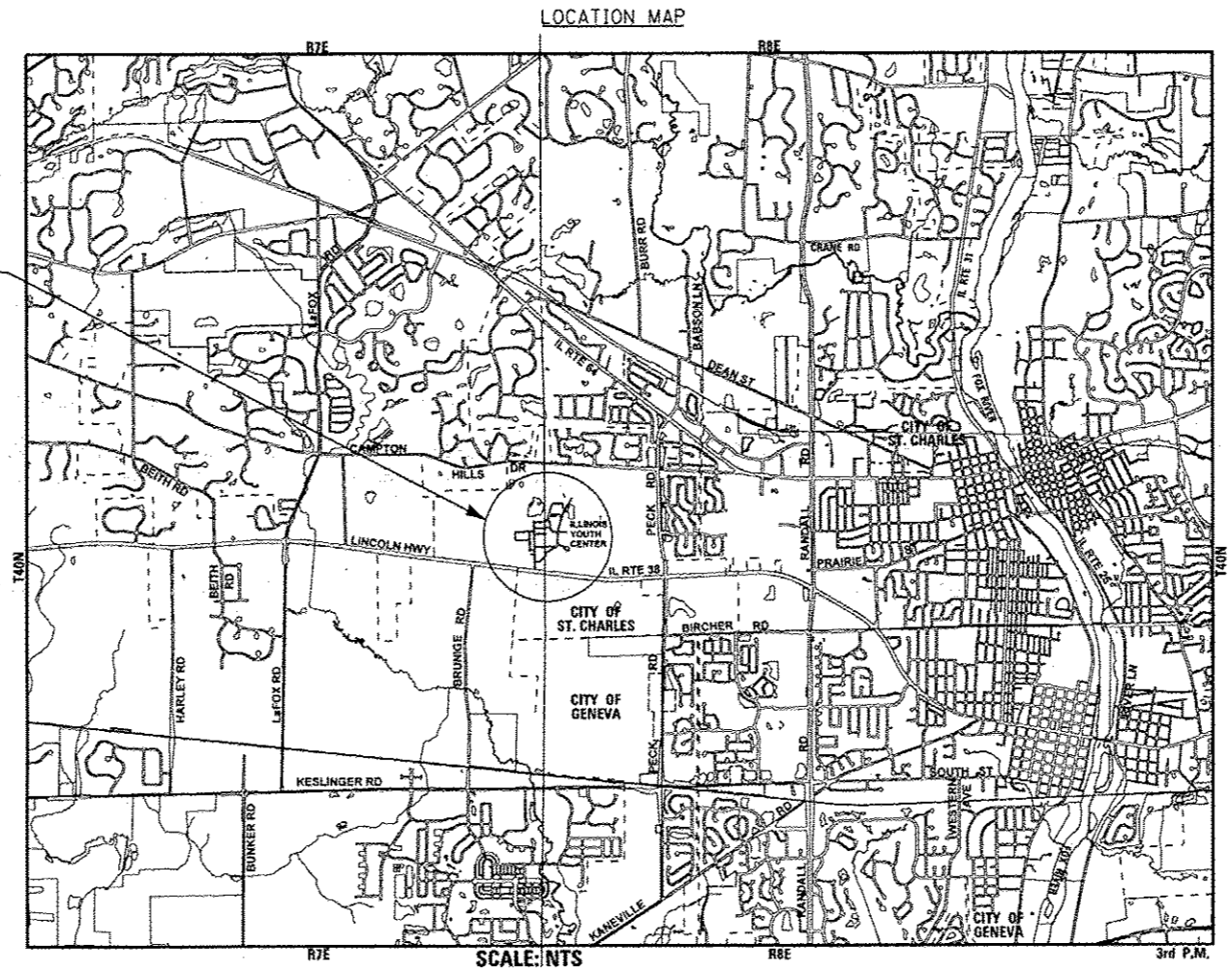
LOCATION OF SECTION INDICATED THUS: -

TRAFFIC DATA LOCAL STREETS 2014 ADT = 200 SPEED LIMIT = UNPOSTED

PROJECT LOCATION



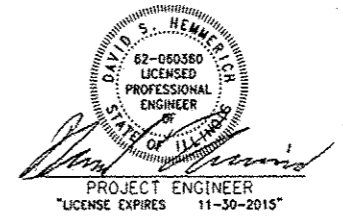
FULL SIZE PLANS HAVE BEEN PREPARED USING STANDARD ENGINEERING SCALES. REDUCED SIZED PLANS WILL NOT CONFORM TO STANDARD SCALES. IN MAKING MEASUREMENTS ON REDUCED PLANS, THE ABOVE SCALES MAY BE USED.



ST. CHARLES & CAMPTON TOWNSHIP GROSS LENGTH OF IMPROVEMENT = 5,890 LF OR 1.116 MILES NET LENGTH OF IMPROVEMENT = 5,859 LF OR 1.110 MILES



CONTACT JULIE AT 811 OR 800-892-0123 WITH THE FOLLOWING: COUNTY = KANE CITY-TWNSHP. = ST CHARLES - ST CHARLES & CAMPTON SEC. & 1/4 SEC. NO. = NE 36, NW 31 48 HOURS (2 working days) BEFORE YOU DIG



STATE OF ILLINOIS DEPARTMENT OF TRANSPORTATION DIVISION OF HIGHWAYS SUBMITTED May 6 20 14 DEPUTY DIRECTOR OF HIGHWAYS, REGION ENGINEER May 9 20 14 JOHN D. BARANZELLI, PE, SE ENGINEER OF DESIGN AND ENVIRONMENT May 9 20 14 Omer Osman, PE, SE DIRECTOR OF HIGHWAYS, CHIEF ENGINEER

PRINTED BY THE AUTHORITY OF THE STATE OF ILLINOIS

DISTRICT ONE - PROJECT MANAGER: KEN ENG (847) 705-4247 (IDOT) PROJECT ENGINEER: ROBERT LENZINI (815) 459-1260 (BAXTER & WOODMAN) CONTRACT NO. 60Y37