

F.A.P. RTE.	SECTION	COUNTY	TOTAL SHEETS	SHEET NO.
316	D2 BRIDGE REPAIR 2014-3	STEPHENSON	6	1
ILLINOIS CONTRACT NO. 64J46				

**INDEX OF SHEETS**

- 1 COVER SHEET, INDEX OF SHEETS, HIGHWAY STANDARDS
- 2 GENERAL NOTES
- 3 SUMMARY OF QUANTITIES
- 4 BRIDGE FENCE RAILING, STRUCTURE NO. 089-0043
- 5 EXISTING PEDESTRIAN RAIL PLANS
- 6 INFORMATIONAL WARNING SIGNS (FOR NARROW TRAVEL LANES) 39.2

**STANDARDS**

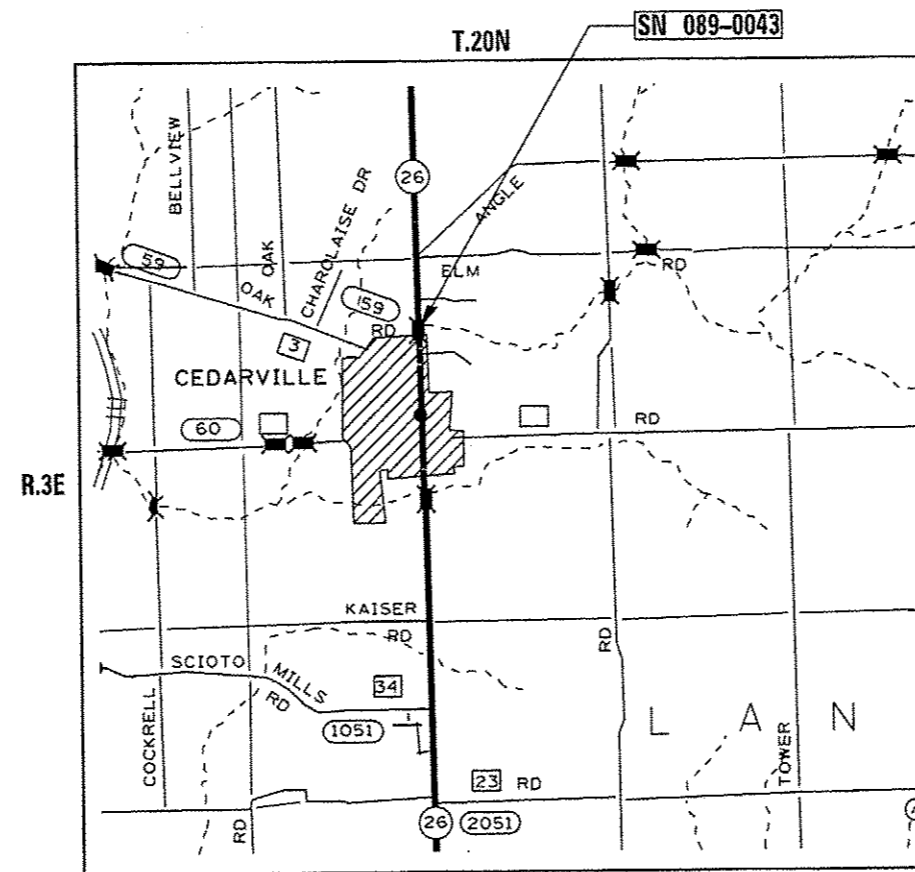
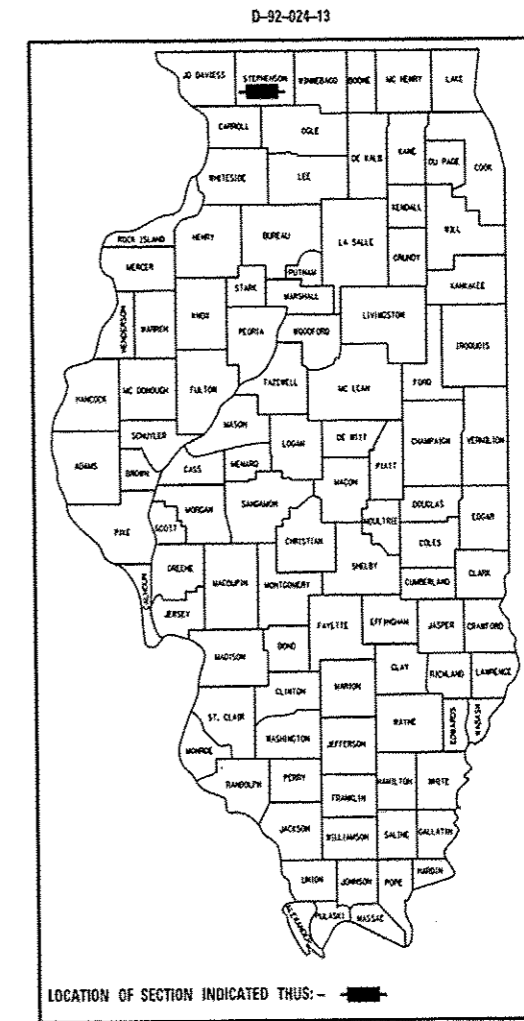
- 701006-05 OFF-RD OPERATIONS, 2L, 2W, 15' (4.5m) TO 24" (600mm) FROM PAVEMENT EDGE
- 701201-04 LANE CLOSURE, 2L, 2W, DAY ONLY, FOR SPEEDS ≥ 45 MPH
- 701301-04 LANE CLOSURE, 2L, 2W, SHORT TIME OPERATIONS
- 701801-05 SIDEWALK, CORNER OR CROSSWALK CLOSURE
- 701901-03 TRAFFIC CONTROL DEVICES
- 720011-01 SIGN PANEL MOUNTING DETAILS
- 728001-01 TELESCOPING STEEL SIGN SUPPORT
- 729001-01 APPLICATIONS OF TYPES A & B METAL POSTS (FOR SIGNS AND MARKERS)

**STATE OF ILLINOIS**  
**DEPARTMENT OF TRANSPORTATION**  
**DIVISION OF HIGHWAYS**

**PROPOSED**  
**HIGHWAY PLANS**

**FAP ROUTE 316 (IL 26)**  
**SECTION D2 BRIDGE REPAIR 2014-3**

**STEPHENSON COUNTY**  
*C-92-042-13*



NEWTON TOWNSHIP, SECTION 25

J.U.L.I.E.  
 JOINT UTILITY LOCATION INFORMATION FOR EXCAVATION  
 1-800-892-0123  
 OR 811

PROJECT ENGINEER: DAVID DOSS (815) 284-5416  
 PROJECT MANAGER: MAHMOUD ETEMADI (815) 284-5393

CONTRACT NO. 64J46

STATE OF ILLINOIS  
 DEPARTMENT OF TRANSPORTATION  
 DIVISION OF HIGHWAYS

SUBMITTED March 14<sup>th</sup> 2014  
*Paul [Signature]*  
 DEPUTY DIRECTOR OF HIGHWAYS, REGION ENGINEER

May 9 2014  
*John D. Baranzelli P.E.*  
 acting ENGINEER OF DESIGN AND ENVIRONMENT

May 9 2014  
*Omer Osman P.E.*  
 DIRECTOR OF HIGHWAYS, CHIEF ENGINEER

**PRINTED BY THE AUTHORITY**  
**OF THE STATE OF ILLINOIS**

*Rev. 6-3-14*