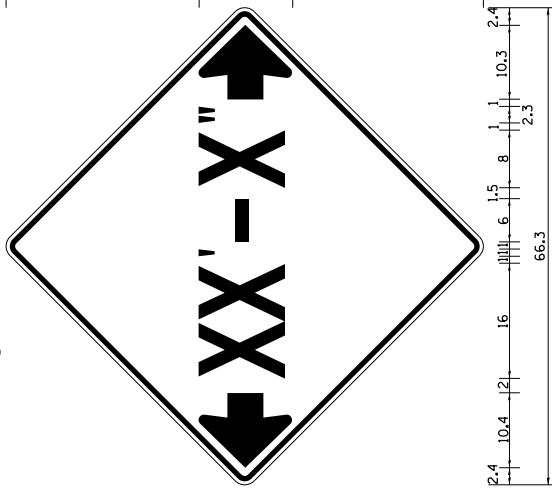
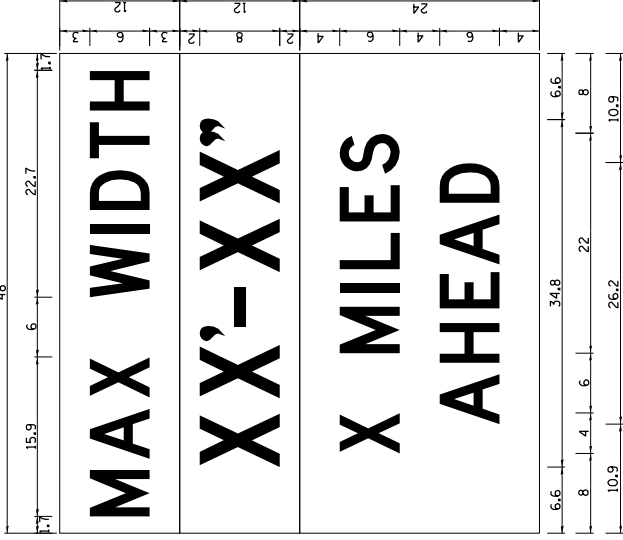
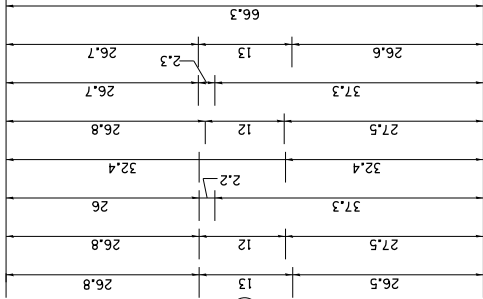


# INFORMATIONAL WARNING SIGN (FOR NARROW TRAVEL LANES)



**NOTES**  
 W12-2 - Horizontal Clearance Sign  
 48.0" across sides, 1.9" Radius,  
 0.8" Border, 0.5" Indent, Black on  
 Orange; Standard Arrow Custom  
 10.4" X 8.1" 180° Black 11 Inch  
 D Series Lettering; Standard Arrow  
 Custom 10.4" X 8.1" 0°



W12-1103 (Width is 8D)  
 No border, Black on White;  
 [MAX WIDTH] D;  
 No border, Black on Orange;  
 [XX'-XX''] D;  
 No border, Black on White;  
 [X MILES] D; [AHEAD] D;

All work to furnish and install these signs shall be included in the cost of the Traffic Control Standards and shall not be paid for separately.

ALL DIMENSIONS ARE IN INCHES UNLESS OTHERWISE NOTED.

REVISED - 5-15-09

FILE NAME = O:\BR\Doss\Stephenson\64J46 Bridge Railing Replacement\CADD\2013-sht-cover.dgn  USER NAME = dossdd  PLOT DATE = Fri Feb 21 14:58:41 2014	<b>STATE OF ILLINOIS DEPARTMENT OF TRANSPORTATION</b>	<b>REGION 2/ DISTRICT 2 STANDARD</b>	F.A.P. RTE.	SECTION	COUNTY	TOTAL SHEETS	SHEET NO.
			316	D2 BRIDGE REPAIR 2014-3	STEPHENSON	6	6
			CONTRACT NO. 64J46				
			FED. ROAD DIST. NO.	ILLINOIS	FED. AID PROJECT		