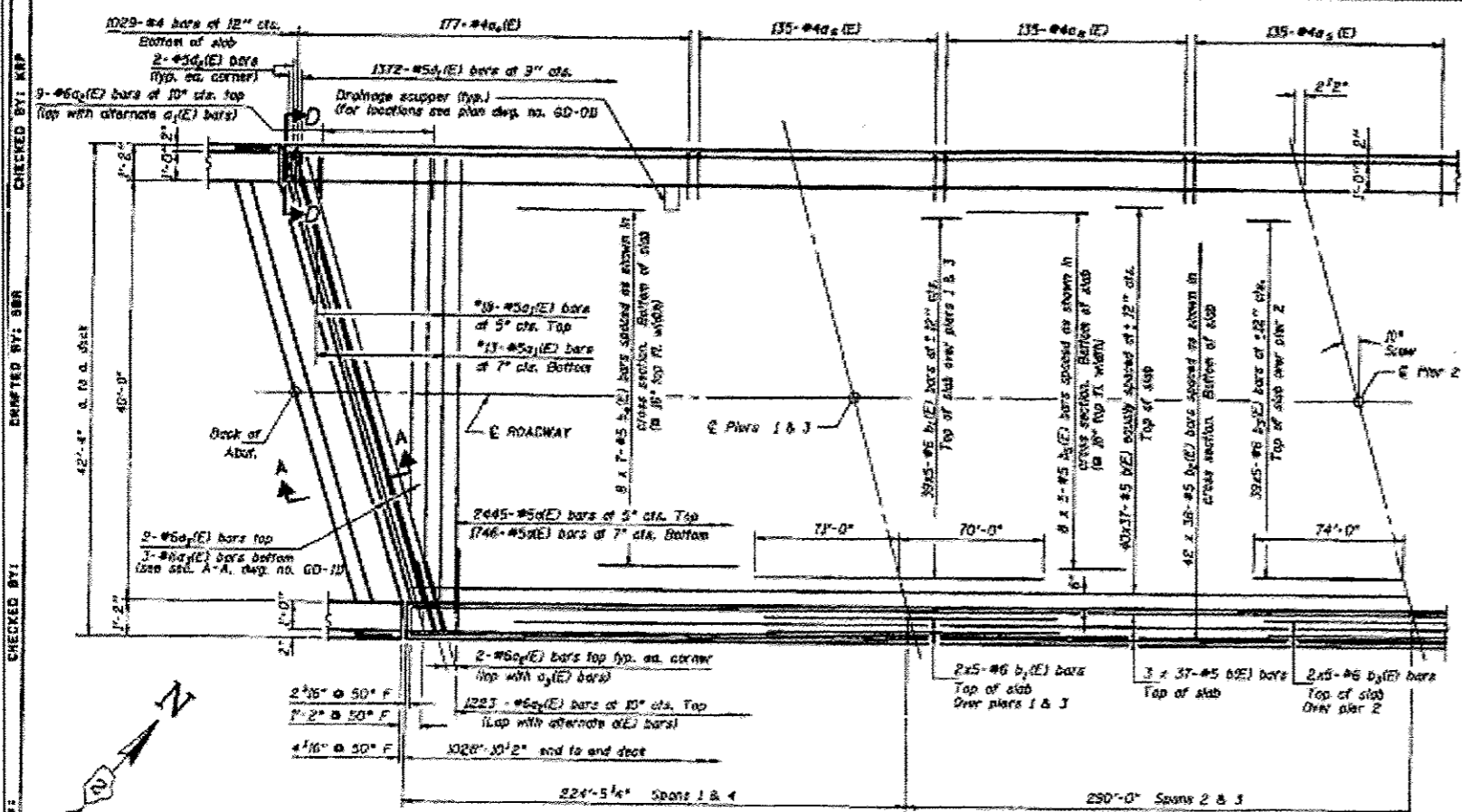
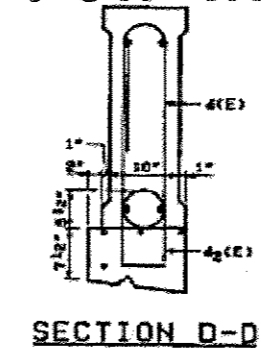


FOR INFORMATION ONLY

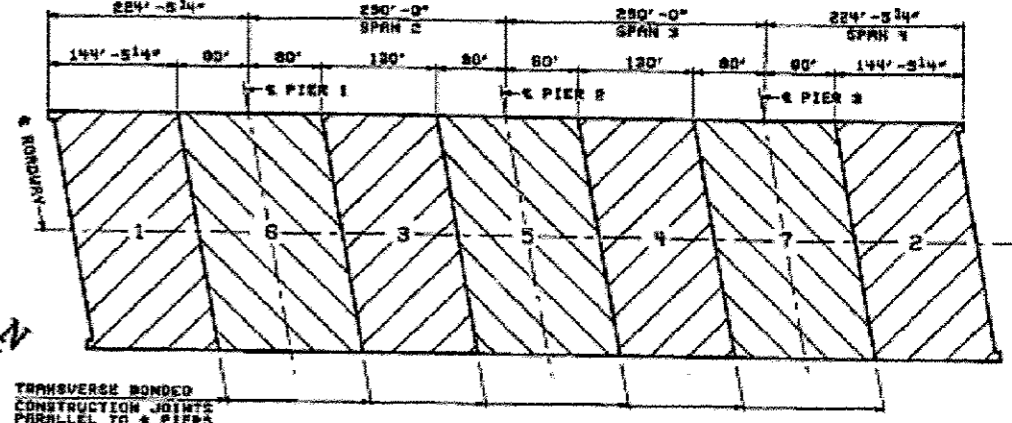
| | | | | | | |
|-------------------|--|-----------------------|----------------------------|----------|-------------------|--------------|
| SHEET NO. 7 OF 30 | | ROUTE NO. | SECT. | COUNTY | SHEET NO. | TOTAL SHEETS |
| | | F.A.P. RTE. | LEE & OGLE | ILLINOIS | 86 | 31 |
| | | FED. ROAD DIST. NO. 7 | ILLINOIS FED. ROAD PROJECT | | STAFF BAR-742(2R) | |



HALF PLAN



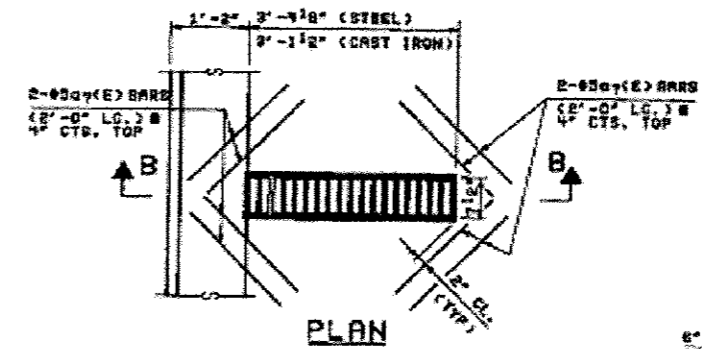
SECTION D-D



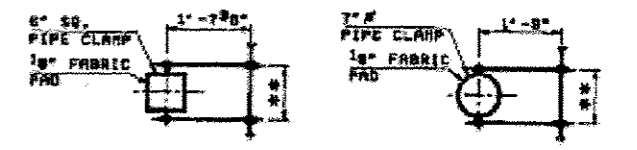
DECK POURING SEQUENCE PLAN

NOTES: (DECK POURING)

- POURING SEQUENCES SHALL BE AS SHOWN ABOVE. SEQUENCES 1 & 2 AND 3 & 4 MAY BE CAST SIMULTANEOUSLY.
- WHEN THE DECK POUR IS STOPPED FOR THE DAY AT ONE OR MORE OF THE TRANSVERSE BONDED CONSTRUCTION JOINTS IN THE DECK POURING SEQUENCE AS SHOWN, THE NEXT POUR SHALL NOT BE MADE UNTIL BOTH OF THE FOLLOWING REQUIREMENTS ARE MET:
 - AT LEAST 72 HOURS SHALL HAVE LAPSED FROM THE END OF THE PREVIOUS POUR.
 - THE CONCRETE STRENGTH SHALL HAVE ATTAINED A MINIMUM MODULUS OF RUPTURE OF 650 P.S.I. OR A MINIMUM COMPRESSIVE STRENGTH OF 3500 P.S.I.



PLAN



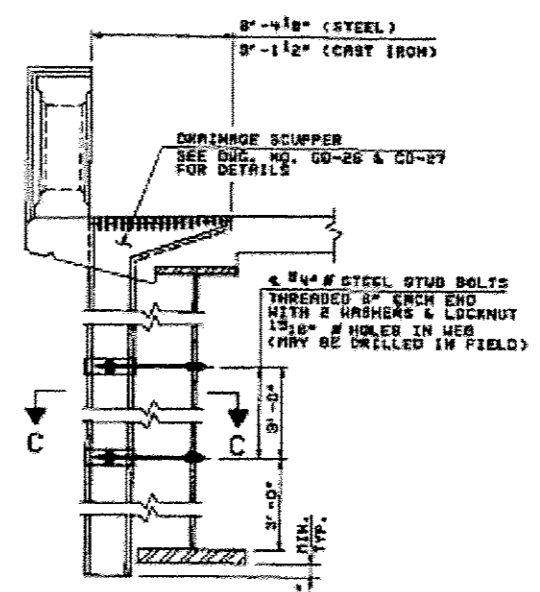
STEEL SCUPPER CAST IRON SCUPPER

** DIMENSION AS REQUIRED BY PIPE CLAMP

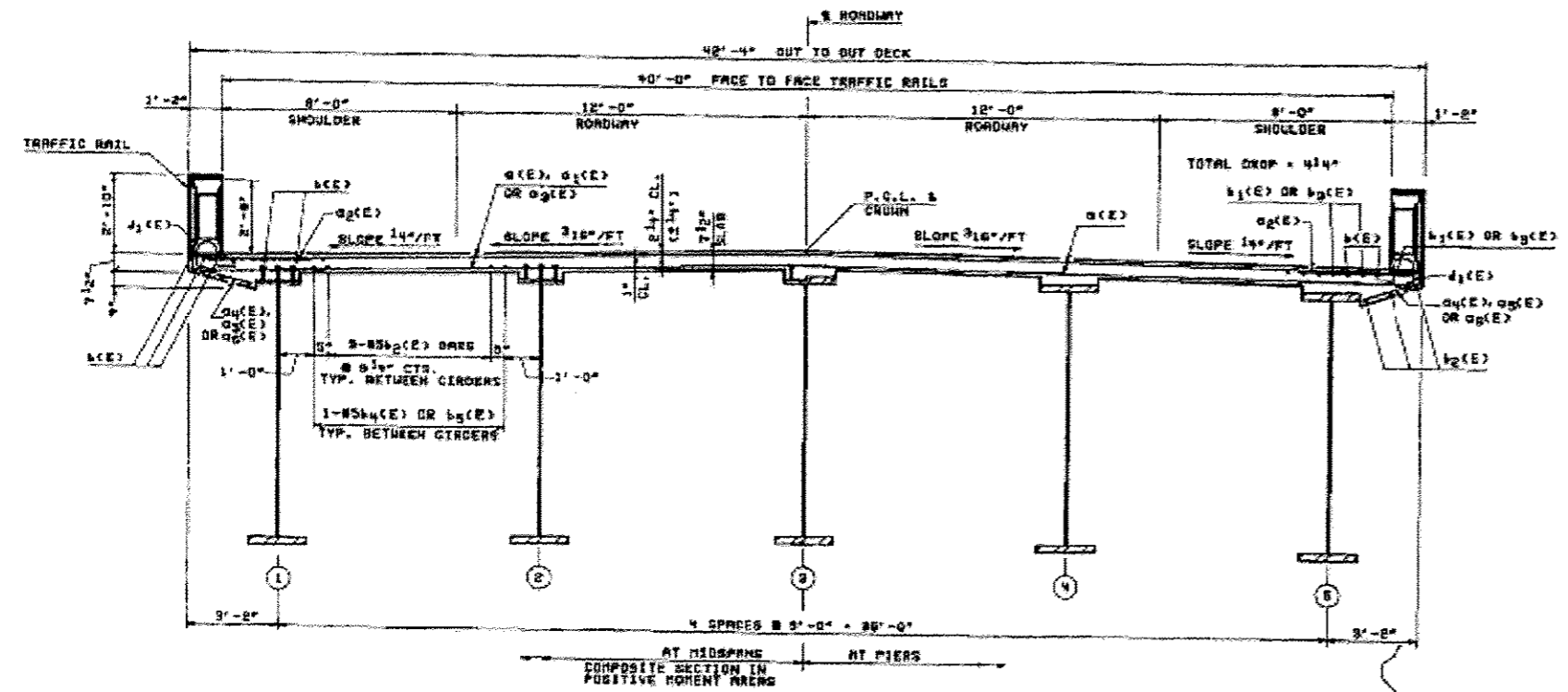
SECTION C-C

NOTES:

- REINFORCEMENT BARS DESIGNATED (E) SHALL BE EPOXY COATED.
 - BARS INDICATED THUS 20#2-#5 ETC. INDICATES 20 LINES OF BARS WITH 2 LENGTHS PER LINE.
 - FOR TRAFFIC RAIL DETAILS AND BILL OF MATERIAL SEE DIS. NO. CO-10.
 - FOR SECTION B-B & FINGER PLATE EXPANSION JT. DETAILS SEE DIS. NO. CO-11.
 - SCUPPERS SHALL BE LOCATED CLEAR OF ALL CROSS FRAMES AND SHEAR STUDS.
- MIN. BAR LAP
 #5 BAR = 2'-2"
 #6 BAR = 2'-7"



SECTION B-B



CROSS SECTION (LOOKING UPSTATION)

| | | | |
|---|-----------------|-----------------|-----------------|
| STATE OF ILLINOIS DEPARTMENT OF TRANSPORTATION | | | |
| DECK DETAILS | | | |
| GRAND DETOUR BRIDGE OVER ROCK RIVER F.A.P. RTE. 742 SECTION 398B-1 STR. 1228+96 LEE & OGLE COUNTIES STRUCTURE NUMBER 052-0063 | | | |
| STEINHAH BOYNTON INC. CONSULTING ENGINEERS - CHICAGO, ILLINOIS | | | |
| DRAWING NO. GD-09 | SCALE N.T.S. | DATE 4-19-93 | SHEET NO. 31 |

| REVISION | DATE | DESCRIPTION |
|----------|------|-------------|
| | | |
| | | |

CHECKED BY: BAR

DESIGNED BY: BAR

DRAWN BY: BAR

DATE: 4-19-93

| | |
|------------|-----------|
| DESIGNED - | REVISED - |
| DRAWN - | REVISED - |
| CHECKED - | REVISED - |
| DATE - | REVISED - |

STATE OF ILLINOIS
DEPARTMENT OF TRANSPORTATION

EXISTING BRIDGE PLANS
SN: 052-0063

| | | | | |
|-------------------------------|------------|----------|--------------|-----------|
| F.A.P. RTE. | SECTION | COUNTY | TOTAL SHEETS | SHEET NO. |
| IL 2 D2 BRIDGE PAINTING 2014- | LEE / OGLE | ILLINOIS | 25 | 11 |
| CONTRACT NO. 64J52 | | | | |