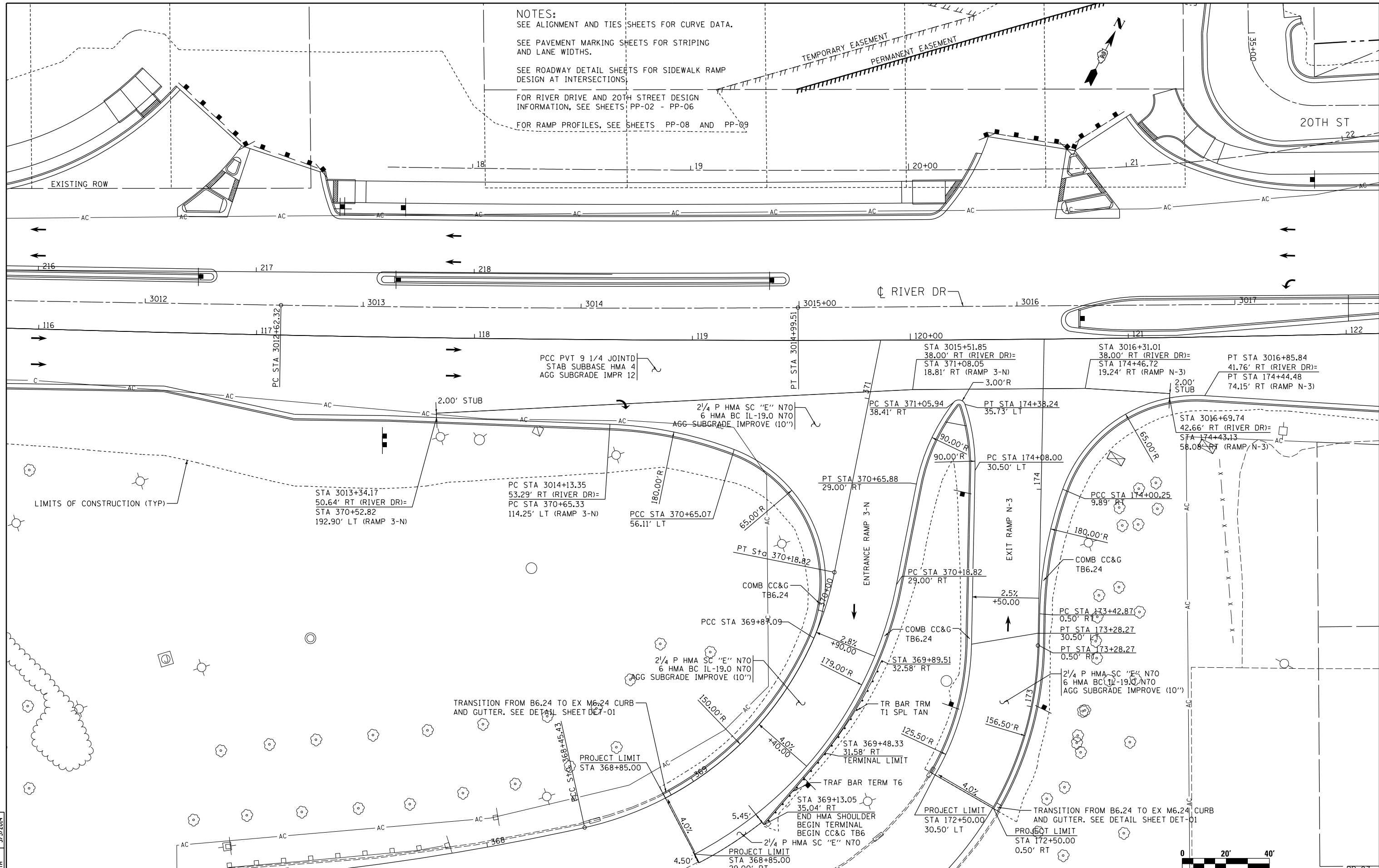


NOTES:
 SEE ALIGNMENT AND TIES SHEETS FOR CURVE DATA.
 SEE PAVEMENT MARKING SHEETS FOR STRIPING AND LANE WIDTHS.
 SEE ROADWAY DETAIL SHEETS FOR SIDEWALK RAMP DESIGN AT INTERSECTIONS.
 FOR RIVER DRIVE AND 20TH STREET DESIGN INFORMATION, SEE SHEETS PP-02 - PP-06
 FOR RAMP PROFILES, SEE SHEETS PP-08 AND PP-09



LAYOUT	1/23/2013
DRAWN	AAP 2/15/2013
REVIEWED	MTH 3/5/2014

FILE NAME = D2PACKE-HP5-shr-plnpr-f008L.dgn

USER NAME = petke00954	DESIGNED - CBP	REVISED -
PLOT SCALE = 1" = 20'	DRAWN - AAP	REVISED -
PLOT DATE = 03/24/2014	CHECKED - MTH	REVISED -
	DATE - 3/7/2014	REVISED -

**STATE OF ILLINOIS
 DEPARTMENT OF TRANSPORTATION**

**PLAN AND PROFILE
 RIVER DRIVE LOOP RAMPS**

SCALE: 1" = 20' SHEET NO. OF SHEETS STA. TO STA.

F.A.U. RTE.	SECTION	COUNTY	TOTAL SHEETS	SHEET NO.
5756	(81-11M)	ROCK ISLAND	217	50
ILLINOIS FED. AID PROJECT			CONTRACT NO. 64J68	