

PLAN	SURVEYED	DATE
	PLOTTED	BY
	CHECKED	
	AT	
	FILE NAME	
	NO.	



PROFILE	SURVEYED	DATE
	PLOTTED	BY
	CHECKED	
	AT	
	FILE NAME	
	NO.	

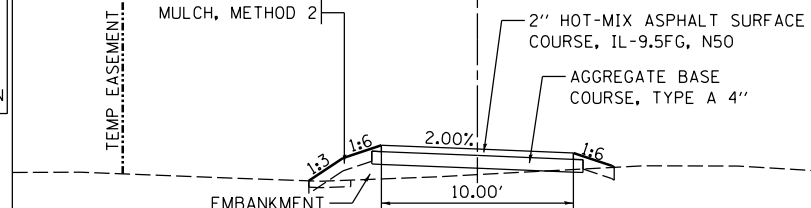
LAYOUT	MPV	2/6/2013
DRAWN	MPV	2/22/2013
REVIEWED	MTH	3/5/2014

NOTES:

- TEMPORARY SHARED USE PATH PAVEMENT DESIGN:
A. 2" HOT-MIX ASPHALT SURFACE COURSE, IL-9.5FG, N50
B. AGGREGATE BASE COURSE, TYPE A 4"
- SEE RIGHT-OF-WAY PLAN FOR TEMP EASEMENT INFORMATION

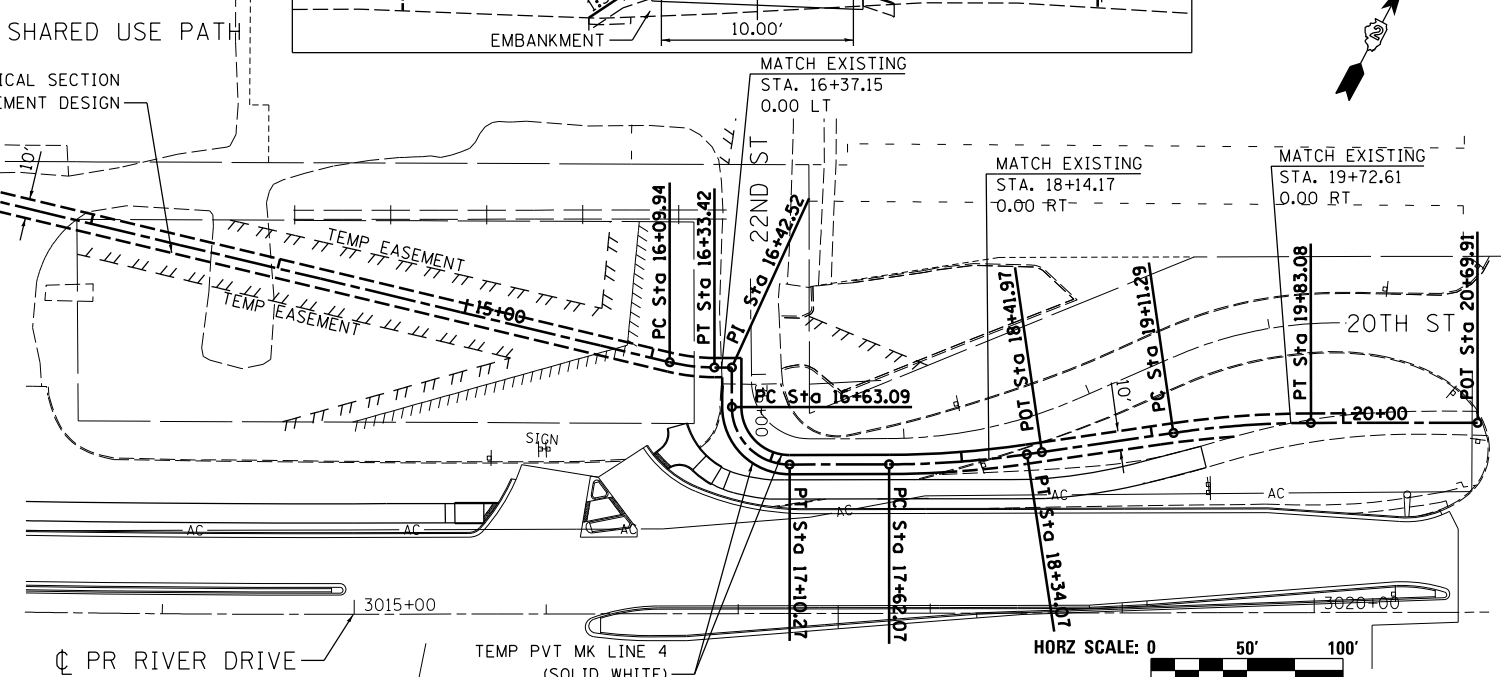
TOPSOIL FURNISH AND PLACE, 4" SEEDING, CLASS 2A MULCH, METHOD 2

TEMPORARY SHARED USE PATH



SEE NOTE 1 AND TYPICAL SECTION FOR TEMPORARY PAVEMENT DESIGN

PROP. CURVE TEMP_BP-1	PROP. CURVE TEMP_BP-2	PROP. CURVE TEMP_BP-3	PROP. CURVE TEMP_BP-4	PROP. CURVE TEMP_BP-5
PI STA. = 9+89.31	PI STA. = 16+21.73	PI STA. = 16+93.15	PI STA. = 17+98.13	PI STA. = 19+47.25
N = 564,710.00	N = 564,869.60	N = 564,834.75	N = 564,890.41	N = 564,978.83
E = 2,458,894.87	E = 2,459,507.39	E = 2,459,549.64	E = 2,459,653.59	E = 2,459,773.82
Δ = 13° 27' 33" (RT)	Δ = 13° 27' 13" (LT)	Δ = 90° 06' 20" (LT)	Δ = 8° 10' 07" (LT)	Δ = 8° 13' 35" (RT)
D = 11° 27' 33"	D = 57° 17' 45"	D = 190° 59' 09"	D = 11° 20' 45"	D = 11° 27' 33"
R = 500.00'	R = 100.00'	R = 30.00'	R = 505.00'	R = 500.00'
T = 58.97'	T = 11.79'	T = 30.06'	T = 36.06'	T = 35.96'
L = 117.40'	L = 23.48'	L = 47.18'	L = 72.00'	L = 71.79'
E = 3.47'	E = 0.69'	E = 12.47'	E = 1.29'	E = 1.29'
e = N/A	e = N/A	e = N/A	e = N/A	e = N/A
T.R. = N/A	T.R. = N/A	T.R. = N/A	T.R. = N/A	T.R. = N/A
S.E. RUN = N/A	S.E. RUN = N/A	S.E. RUN = N/A	S.E. RUN = N/A	S.E. RUN = N/A
P.C. STA. = 9+30.34	P.C. STA. = 16+09.94	P.C. STA. = 16+63.09	P.C. STA. = 17+62.07	P.C. STA. = 19+11.29
N = 564,682.26	N = 564,866.62	N = 564,861.28	N = 564,873.39	N = 564,957.52
E = 2,458,842.83	E = 2,459,495.97	E = 2,459,535.51	E = 2,459,621.80	E = 2,459,744.86
P.T. STA. = 10+47.74	P.T. STA. = 16+33.42	P.T. STA. = 17+10.27	P.T. STA. = 18+34.07	P.T. STA. = 19+83.08
N = 564,724.87	N = 564,875.14	N = 564,848.94	N = 564,911.77	N = 564,995.77
E = 2,458,951.94	E = 2,459,517.80	E = 2,459,576.14	E = 2,459,682.64	E = 2,459,805.54



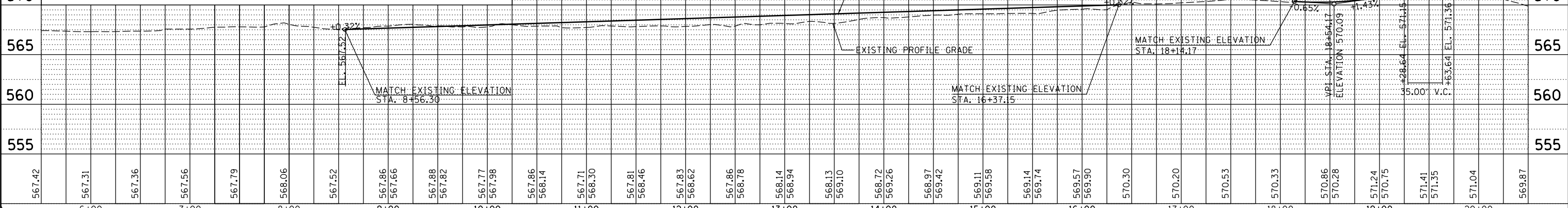
MOT-008

SHARED USE PATH NOTES

- THE CONTRACTOR SHALL MAINTAIN A CONTINUOUS 10 FOOT MINIMUM SHARED USE PATH ALONG RIVER DRIVE AT ALL TIMES. ANY DETOUR MUST BE CLEARLY MARKED USING SIGNS AND BARRICADES NOTIFYING PEDESTRIANS/BICYCLISTS OF THE CLOSURE.
- THE CONTRACTOR SHALL BE RESPONSIBLE FOR ENSURING THAT ALL BUSINESSES AND OTHER FACILITIES ARE ACCESSIBLE.
- AT EACH POINT OF CLOSURE, TWO BARRICADES SHALL BE USED TO COMPLETELY CLOSE THE PATH.
- PEDESTRIAN WALKWAYS INCLUDING SIDE PATHS, SHALL BE MAINTAINED FREE OF ANY OBSTRUCTIONS AND HAZARDS SUCH AS HOLES, DEBRIS, MUD, CONSTRUCTION EQUIPMENT, STORED MATERIALS, ETC. AND SHALL BE BROOM SWEEP DAILY OR AS DIRECTED BY THE ENGINEER.
- ALL HAZARDS NEAR OR ADJACENT TO WALKWAYS SHALL BE ELIMINATED.
- THE CONTRACTOR SHALL MAINTAIN DISABLED PERSON PEDESTRIAN ACCESS TO CROSSWALKS ACROSS RIVER DRIVE AND SIDE STREETS AT ALL TIMES VIA ADA COMPLIANT WALKWAYS AND RAMPS THROUGH THE WORK ZONES. THESE ACCESSES MUST BE OBSERVED AND PROTECTED BY THE CONTRACTOR AT ALL TIMES.

575
570
565
560
555

575
570
565
560
555



FILE NAME =	USER NAME = vill01439	DESIGNED - MPV	REVISED -
D2PACKE-HPS-shr-plnprf015L.dgn		DRAWN - MPV	REVISED -
		CHECKED - MTH	REVISED -
		DATE - 3/7/2014	REVISED -

**STATE OF ILLINOIS
DEPARTMENT OF TRANSPORTATION**

**TEMPORARY TRAFFIC CONTROL PLANS
TEMPORARY SHARED USE PATH PLAN & PROFILE**

SCALE: SHEET NO. OF SHEETS STA. TO STA.

F.A.U. RTE.	SECTION	COUNTY	TOTAL SHEETS	SHEET NO.
5756	(81-1)M	ROCK ISLAND	217	60
ILLINOIS FED. AID PROJECT			CONTRACT NO. 64J68	