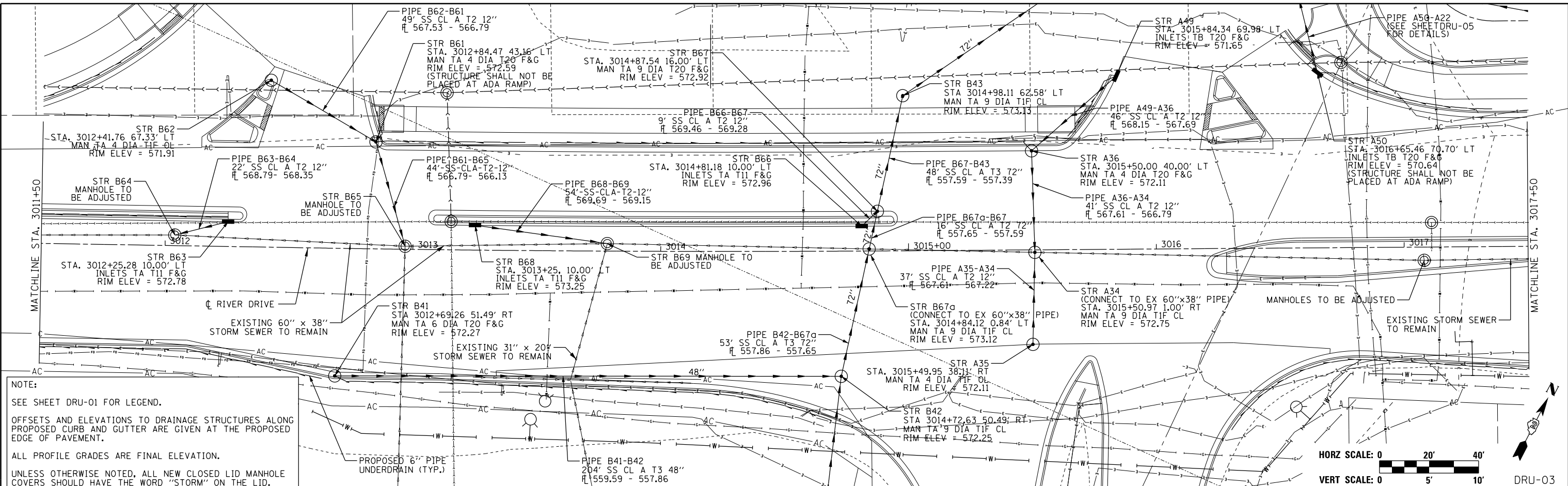


DATE	
BY	
PLAN	SURVEYED
NOTE BOOK	PLOTTED
NO.	GRADES CHECKED
	STRUCTURE NOTATIONS CHKD
	FILE NAME

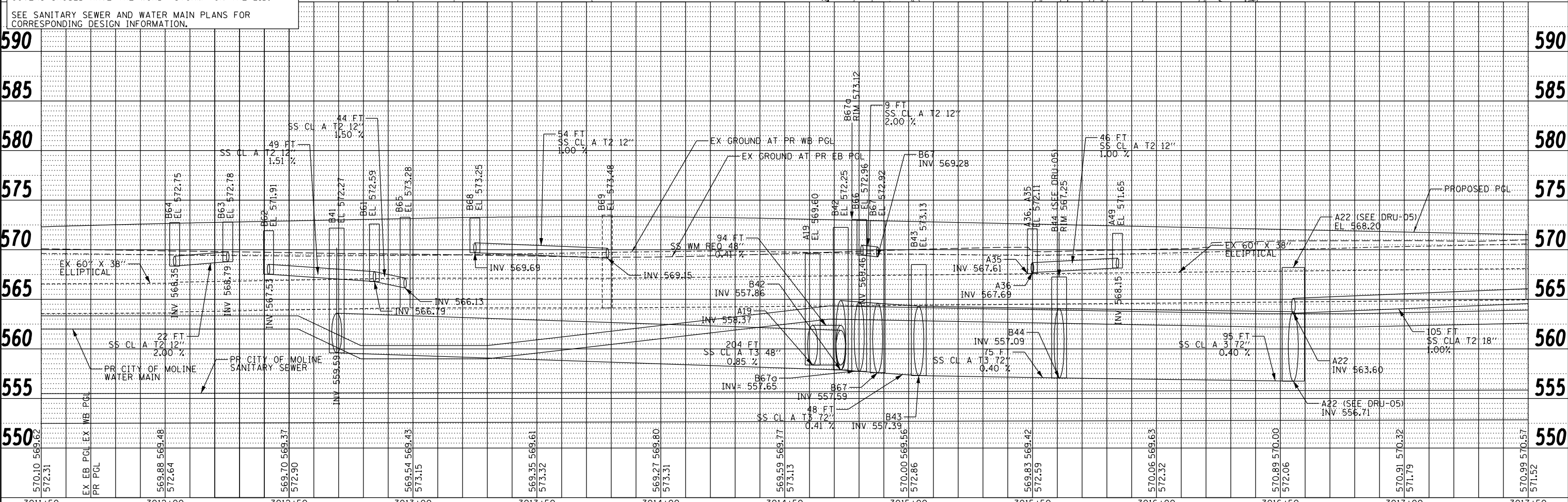
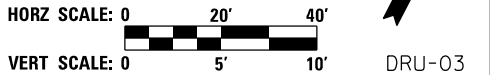


DATE	
BY	
PROFILE	SURVEYED
NOTE BOOK	PLOTTED
NO.	GRADES CHECKED
	STRUCTURE NOTATIONS CHKD
	FILE NAME

LAYOUT	KMS	12/12/2013
DRAWN	KMS	12/12/2013
REVIEWED	SPG/JJM	2/28/2014



NOTE:
 SEE SHEET DRU-01 FOR LEGEND.
 OFFSETS AND ELEVATIONS TO DRAINAGE STRUCTURES ALONG PROPOSED CURB AND GUTTER ARE GIVEN AT THE PROPOSED EDGE OF PAVEMENT.
 ALL PROFILE GRADES ARE FINAL ELEVATION.
 UNLESS OTHERWISE NOTED, ALL NEW CLOSED LID MANHOLE COVERS SHOULD HAVE THE WORD "STORM" ON THE LID.
 SEE SANITARY SEWER AND WATER MAIN PLANS FOR CORRESPONDING DESIGN INFORMATION.



FILE NAME =	USER NAME =	DESIGNED -	REVISED -	STATE OF ILLINOIS DEPARTMENT OF TRANSPORTATION				DRAINAGE & UTILITIES PLAN AND PROFILE RIVER DRIVE				F.A.U. RTE.	SECTION	COUNTY	TOTAL SHEETS	SHEET NO.
D2PACKE-HPS-sh-t-drain003L.dgn	petke00954	KMS	-									756	(81-11M)	ROCK ISLAND	217	66
PLOT SCALE = 1" = 20'	CHECKED -	REVISED -	REVISED -	SCALE: 1" = 20'				SHEET NO. OF SHEETS		STA. 3011+50 TO STA. 3017+50		ILLINOIS FED. AID PROJECT				
PLOT DATE = 03/24/2014	DATE -	3/7/2014	REVISED -									CONTRACT NO. 64J68				