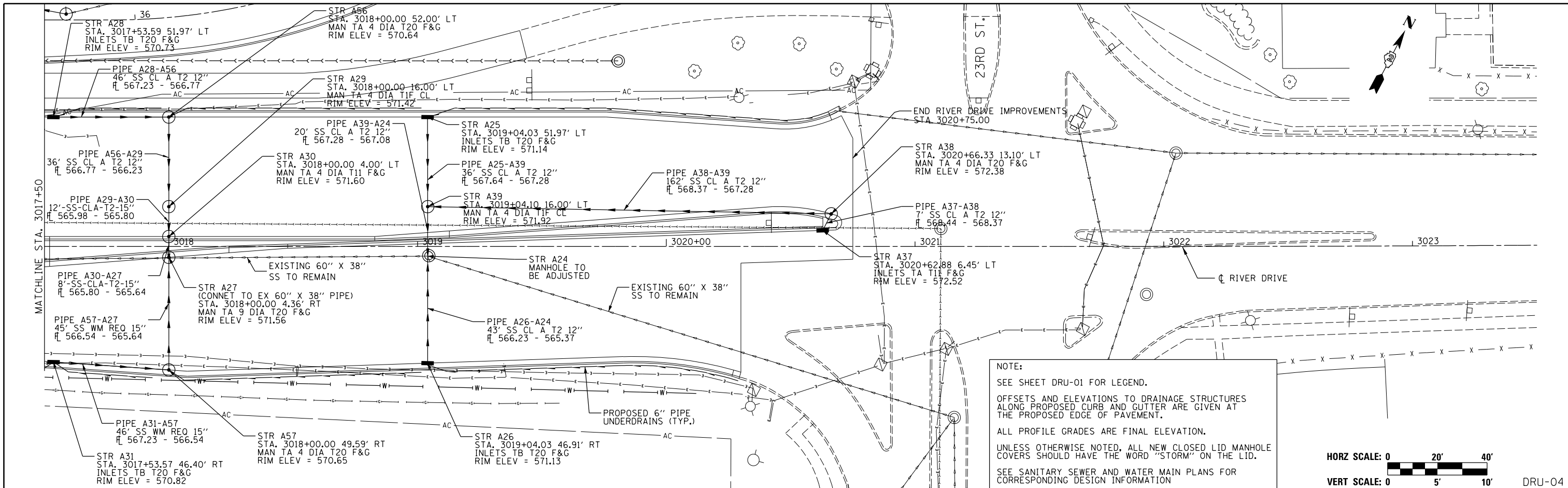


PLAN	SURVEYED	BY	DATE
	PLOTTED		
	GRADES CHECKED		
	STRUCTURE NOTATIONS CHKD		
	NOTE BOOK NO.		

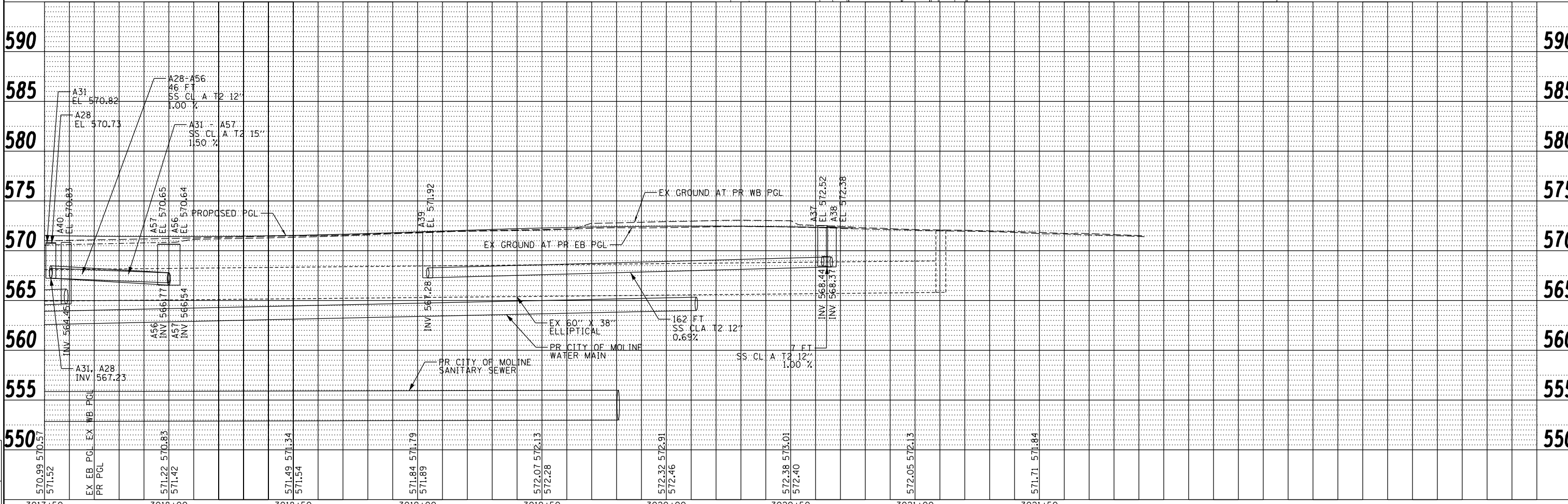
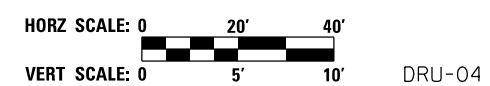


PROFILE	SURVEYED	BY	DATE
	PLOTTED		
	GRADES CHECKED		
	STRUCTURE NOTATIONS CHKD		
	NOTE BOOK NO.		

LAYOUT	KMS	12/12/2013
DRAWN	KMS	12/12/2013
REVIEWED	SPG/JJM	2/28/2014



**NOTE:**  
 SEE SHEET DRU-01 FOR LEGEND.  
 OFFSETS AND ELEVATIONS TO DRAINAGE STRUCTURES ALONG PROPOSED CURB AND GUTTER ARE GIVEN AT THE PROPOSED EDGE OF PAVEMENT.  
 ALL PROFILE GRADES ARE FINAL ELEVATION.  
 UNLESS OTHERWISE NOTED, ALL NEW CLOSED LID MANHOLE COVERS SHOULD HAVE THE WORD "STORM" ON THE LID.  
 SEE SANITARY SEWER AND WATER MAIN PLANS FOR CORRESPONDING DESIGN INFORMATION



FILE NAME = D2PACKE-HPS-sh-t-drain004L.dgn	USER NAME = petke00954	DESIGNED - KMS	REVISED -	<b>STATE OF ILLINOIS</b> <b>DEPARTMENT OF TRANSPORTATION</b>	<b>DRAINAGE &amp; UTILITIES PLAN AND PROFILE</b> <b>RIVER DRIVE</b>	F.A.U. RTE. = 5756	SECTION = (81-1)M	COUNTY = ROCK ISLAND	TOTAL SHEETS = 217	SHEET NO. = 67	
PLOT SCALE = 1" = 20'	CHECKED - SPG/JJW	REVISED -	REVISED -			SCALE: 1" = 20'	SHEET NO. OF SHEETS	STA. 3017+50 TO STA. 3021+92	ILLINOIS FED. AID PROJECT	CONTRACT NO. = 64J68	
PLOT DATE = 03/24/2014	DATE = 3/7/2014	REVISED -	REVISED -								