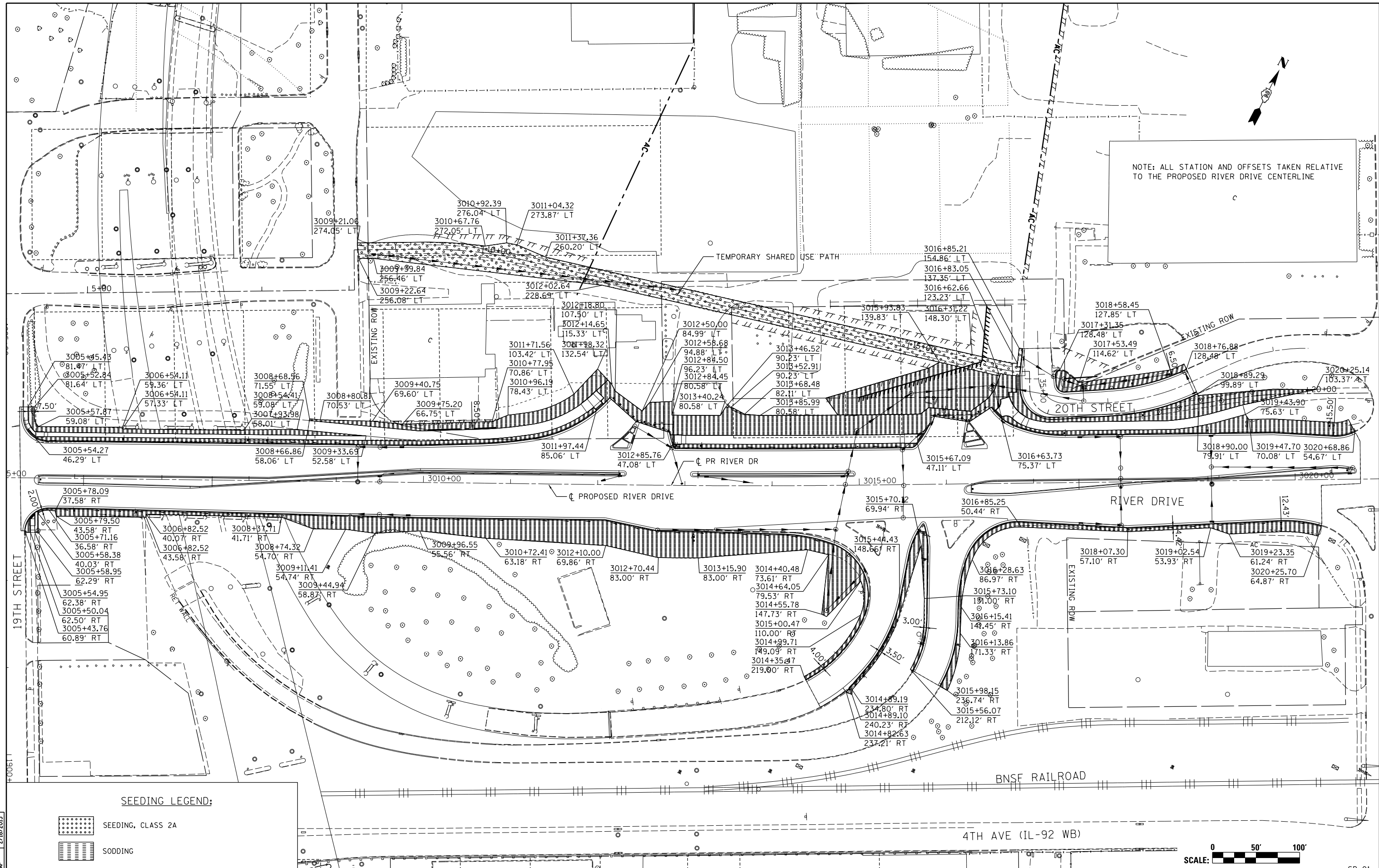
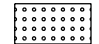





NOTE: ALL STATION AND OFFSETS TAKEN RELATIVE TO THE PROPOSED RIVER DRIVE CENTERLINE



SEEDING LEGEND:

-  SEEDING, CLASS 2A
-  SODDING

LAYOUT	9/23/2011
DRAWN	MGJ
REVIEWED	MGJ
	2/13/2013
	AAP
	2/18/2013

FILE NAME = D2PACKE-HP5-sh-t-Indscp001L.dgn

USER NAME = petke00954

DESIGNED - MGJ
 DRAWN - MGJ
 CHECKED - AAP
 DATE - 3/7/2014

REVISED -
 REVISED -
 REVISED -
 REVISED -

**STATE OF ILLINOIS
 DEPARTMENT OF TRANSPORTATION**

**SEEDING PLAN
 RIVER DRIVE**

SCALE: 1" = 50' SHEET NO. OF SHEETS STA. 3050+00 TO STA. 3021+00



F.A.U. R.E.	SECTION	COUNTY	TOTAL SHEETS	SHEET NO.
5756	(81-1)M	ROCK ISLAND	217	100
ILLINOIS FED. AID PROJECT			CONTRACT NO. 64J68	

SD-01