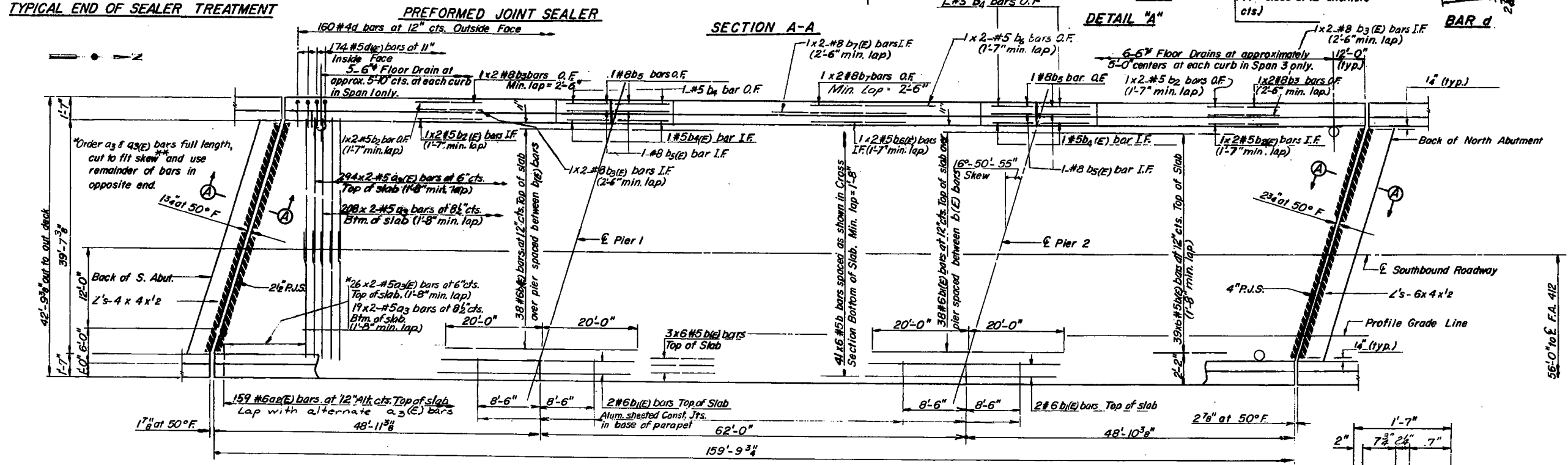
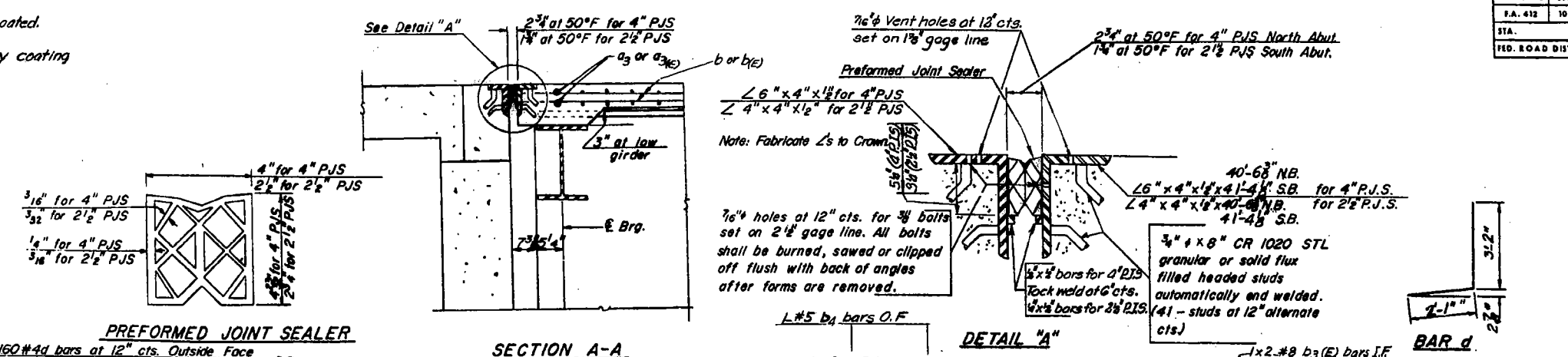
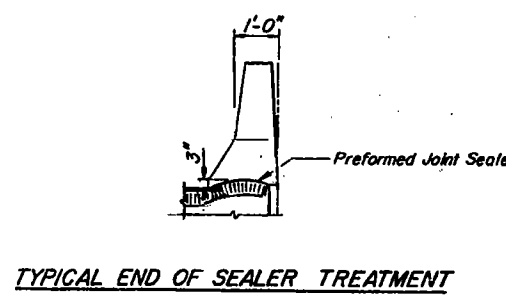


Note: Bars indicated thus 20x3#5 indicates 20 lines of bars with 3 lengths per line.
 Reinforcement bars designated (E) shall be epoxy coated.
 See Special Provisions.
 **See Special Provisions for the procedure for epoxy coating of cut reinforcement bars.

ROUTE NO.	SECTION	COUNTY	TOTAL SHEETS	SHEET NO.
FA. 412	103-2VB	LEE	203	65
STA.	TO STA.			
FED. ROAD DIST. NO. 7	ILLINOIS	PROJECT		

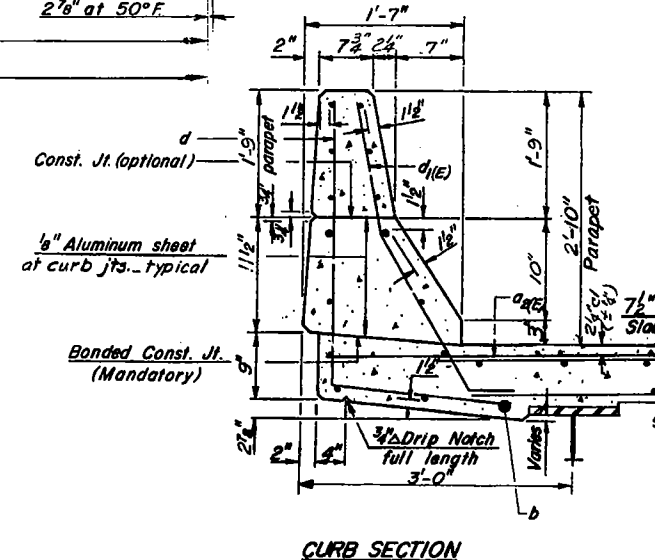
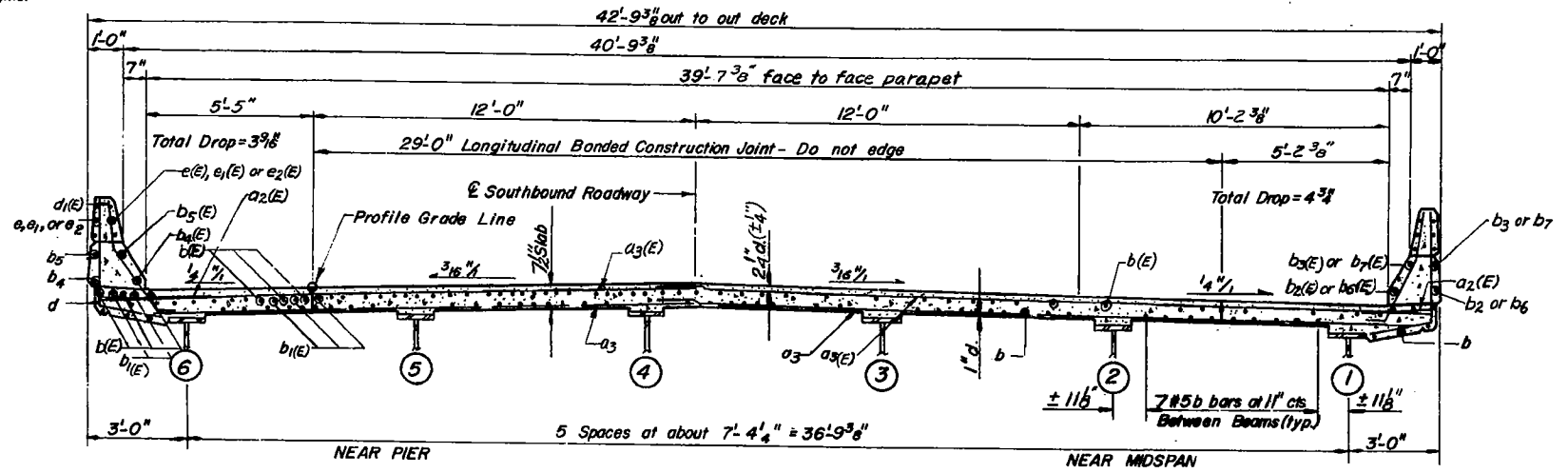


Note: Floor Drains shall be located clear of all diaphragms.

BILL OF MATERIAL

Bar	No	Size	Length	Shape
a ₃	454	#5	21'-1"	
a ₂ (E)	318	#6	4'-0"	
a ₃ (E)	640	#5	21'-1"	
b	246	#5	28'-1"	
b ₂	8	#5	20'-10"	
b ₃	8	#8	2F-3"	
b ₄	8	#5	8'-3"	
b ₅	8	#8	8'-3"	
b ₆	4	#5	23'-4"	
b ₇	4	#8	23'-9"	
b(E)	270	#5	28'-1"	
b ₁ (E)	84	#6	40'-0"	
b ₂ (E)	8	#5	20'-10"	
b ₃ (E)	8	#8	2F-3"	
b ₄ (E)	8	#5	8'-3"	
b ₅ (E)	8	#8	8'-3"	
b ₆ (E)	4	#5	23'-4"	
b ₇ (E)	4	#8	23'-9"	
d	320	#4	5'-3"	
d ₁ (E)	348	#5	3'-11"	
e	24	#4	8'-3"	
e ₁	36	#4	13'-0"	
e ₂	18	#4	14'-9"	
e(E)	24	#4	8'-3"	
e ₁ (E)	36	#4	13'-0"	
e ₂ (E)	18	#4	14'-9"	
Class X Concrete		Cu. Yd.	197.0	
Reinforcement Bars		Pound	20,160	
Reinf. Bars (Epoxy Ctd)		Pound	32,210	

Notes:
 All Reinforcing Steel symmetrical about E Deck.



Work this sheet with Sheet 7. E, F denotes Each Face.

DECK PLAN AND SECTIONS SOUTHBOUND BRIDGE
 FA. 412 SECTION 103-2VB
 F.A. 412 OVER B.N.R.R.
 LEE COUNTY
 STATION 1175+47.10
 STATE OF ILLINOIS
 DEPARTMENT OF TRANSPORTATION

FOR INFORMATION ONLY