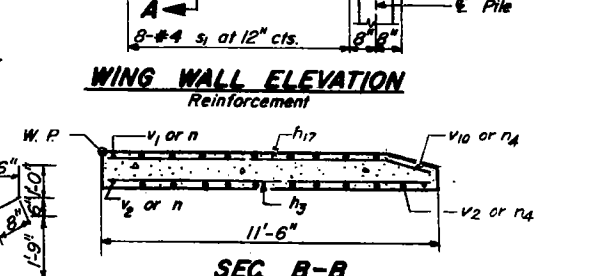
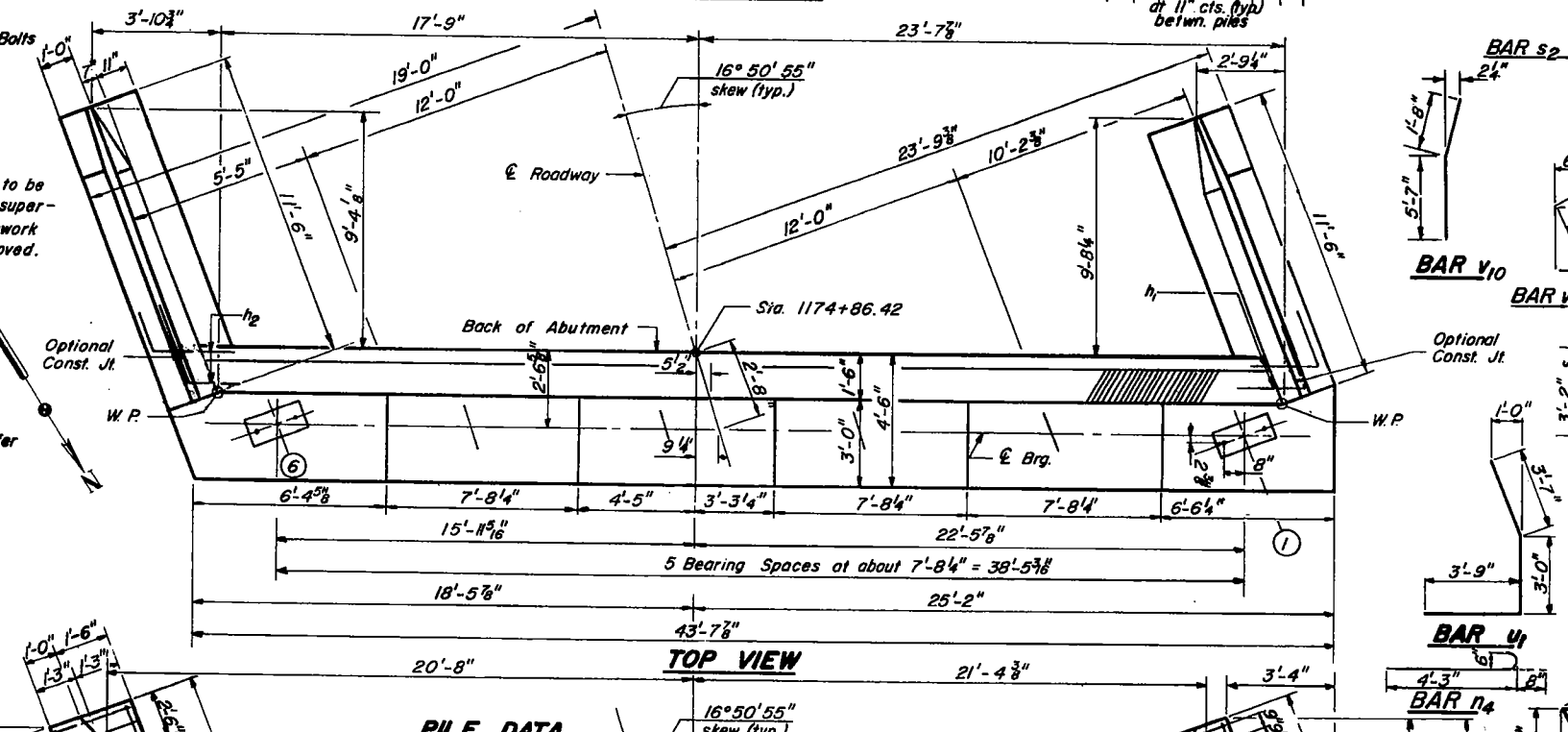
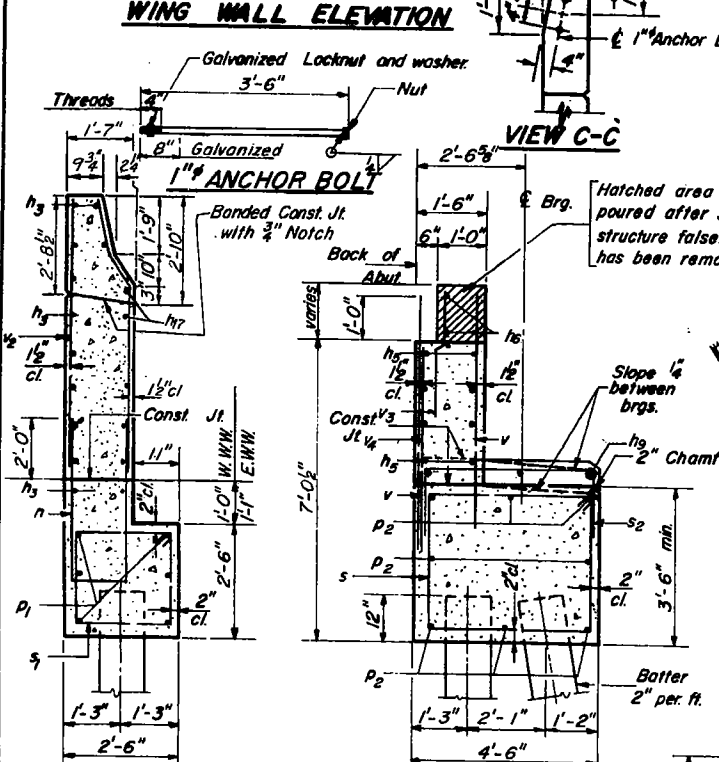
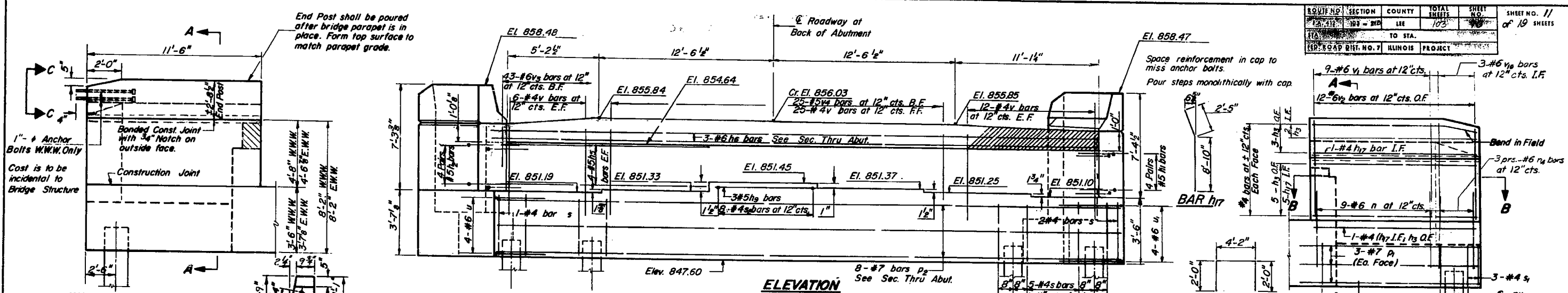


ROUTE NO.	SECTION	COUNTY	TOTAL SHEETS	SHEET NO.
103	103-2VB	LEE	103	11
TO STA. 1175+47.10				
PROJECT: ILLINOIS PROJECT				



**SEC. A-A**  
Notes:  
The guard rail shall be transitioned to a vertical position between the end of wing and the first post.  
For electrical conduit locations see Sheet 5.  
E.F. denotes east face.  
B.F. denotes back face.  
F.F. denotes front face.  
E.W.W. denotes east wing wall.  
W.W.W. denotes west wing wall.  
Place Anchor Bolts in W.W.W. only.

DESIGNED	J.F.D.
CHECKED	PCA
DRAWN	RBD
CHECKED	Rel

**PILE DATA**  
Type Concrete  
Capacity 40 Tons  
Est Length 68'  
No. Required \*11  
\* Includes 1 Test Pile

**ONE ABUTMENT BILL OF MATERIAL**

Bar No.	Size	Length	Shape
h1	#5	4'-9"	J
h2	#5	4'-9"	J
h3	#4	11'-3"	J
h4	#5	42'-3"	J
h5	#6	42'-3"	J
h6	#5	7'-2"	J
h7	#4	11'-3"	J
n4	#6	4'-11"	J
n	#6	9'-10"	J
p1	#7	11'-0"	J
p2	#7	43'-5"	J
s	#4	15'-5"	J
s1	#4	9'-5"	J
s2	#4	8'-2"	J
u	#6	12'-0"	J
u1	#6	10'-4"	J
v	#4	5'-10"	J
v1	#6	7'-2"	J
v2	#6	7'-1"	J
v3	#6	3'-5"	J
v4	#5	6'-10"	J
v10	#6	7'-3"	J
Class X Concrete Cu. Yd. 51			
Reinforcement Bars Lb. 4160			
Concrete Piles Lin. Ft. 680			
Test Pile (Concrete) Ea. 1			

**SOUTH ABUTMENT**  
SOUTHBOUND BRIDGE  
F.A. 412 SECTION 103-2VB  
F.A. 412 OVER B.N.R.R.  
LEE COUNTY  
STATION 1175+47.10  
STATE OF ILLINOIS  
DEPARTMENT OF TRANSPORTATION

PLAN-PILE CAP FOR INFORMATION ONLY