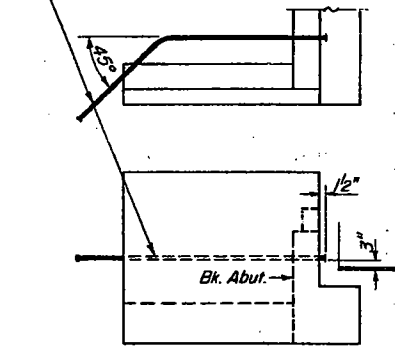


STATE OF ILLINOIS  
DEPARTMENT OF TRANSPORTATION

ROUTE NO.	SECTION	QUANTITY	TOTAL SHEETS	SHEET NO.	SHEET NO. 7 17 SHEETS
D. S. I. P. A. 412	103- 2B	Lee	203	48	
PUB. ROAD DIST. NO. 1		PLANNED	PUB. AND PROJECT		

Locate 2" Galv. Conduit (Sch. 40 Pipe) ±12" inside of fascia beam web and parallel to beam line. Extend to clear the wing wall and terminate at a point outside of shoulder. Thread and cap each end. Place conduit at the two outside corners of each dual bridge & all four corners of a single bridge. (4-Req'd) Cost Incidental

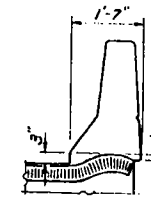


**ELECTRICAL CONDUIT LOCATION**  
(Pile Bent Abutments)

7/16" Vent holes at 12" cts. set on 13/4" gage line

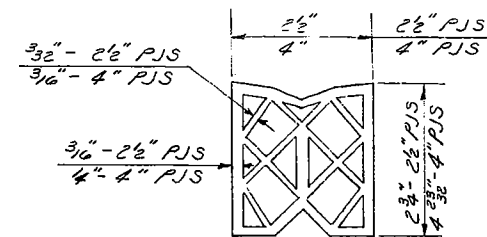
7/16" Holes at 12" cts. for 3/8" bolts set on 3" gage line. Bolts shall be cut off flush after forms are removed.

3/4" x 8" CR.1020 STL. granular or solid flux filled headed studs automatically end welded at 12" alternate cts.



TYPICAL END-OF-SEALER TREATMENTS

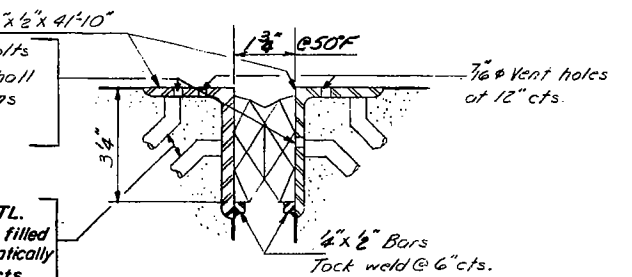
**DETAIL B**  
(4" PJS)



**PREFORMED JOINT SEAL - 2 1/2" x 4"**

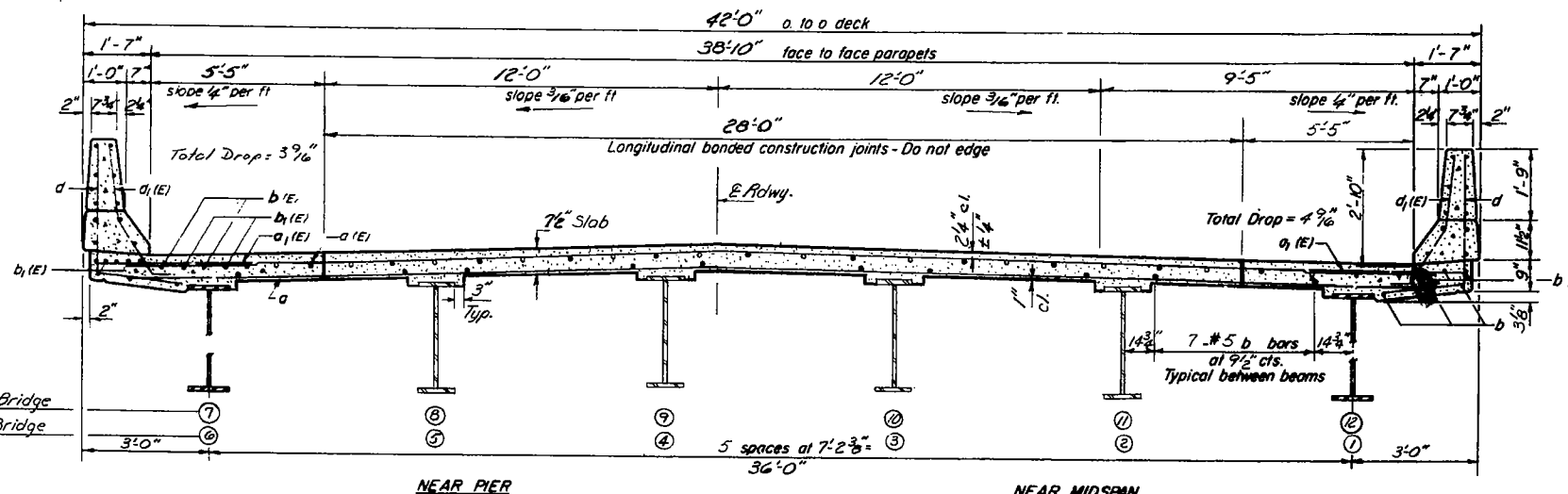
7/16" holes @ 12" cts. for 3/8" bolts set on 2 1/2" gage line. Bolts shall be cut off flush after forms are removed.

3/4" x 8" CR.1020 STL. granular or solid flux filled headed studs, automatically end welded, 12" alt. cts.



**DETAIL A**  
(2 1/2" PJS)

**NOTES:**  
See sheet #7A for superstructure details and Bill of Material.  
Reinforcement bars designated (E) shall be epoxy coated. See Special Provisions.  
Bars indicated thus 20 x 3-#5 etc. indicates 20 lines of bars with 3 lengths per line.



NEAR PIER

**CROSS SECTION**

N.B. Looking North  
S.B. Looking South

NEAR MIDSPAN

FOR INFORMATION ONLY

DECK DETAILS  
FA 412 - SEC. 103-2B  
LEE COUNTY  
STA. 1167 + 00.00

DESIGNED
CHECKED
DRAWN
CHECKED

S-2-R(530) 8-30-80