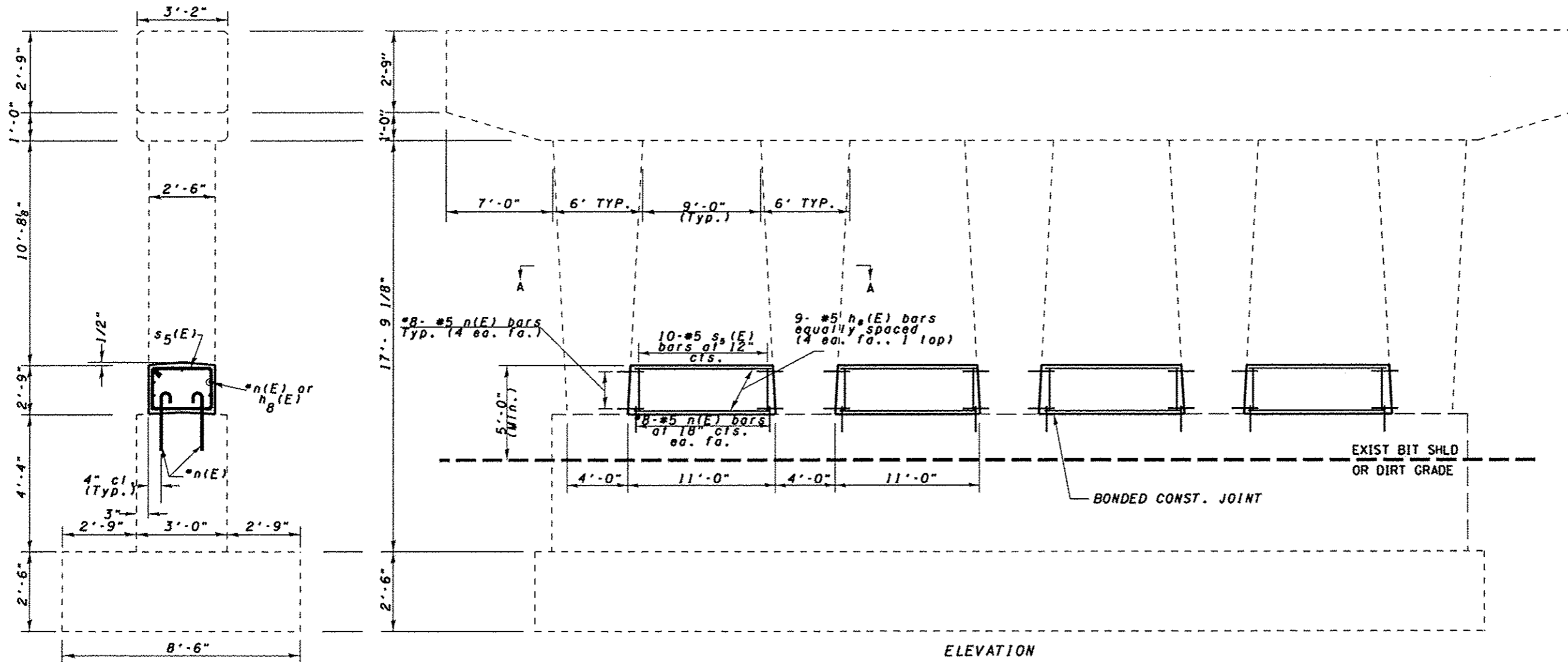
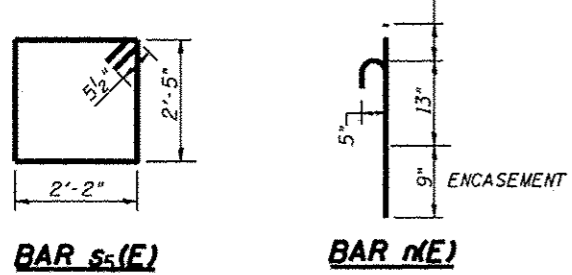


NOTES:
 The cost of epoxy grouting threaded rods shall be included with Reinforcement Bars, Epoxy Coated
 Plan dimensions and details relative to existing plans are subject to nominal construction variations. The Contractor shall field verify existing dimensions and details affecting new construction and make necessary approved adjustments prior to construction or ordering of materials. Such variations shall not be cause for additional compensation for a change in scope of the work, however, the Contractor will be paid for the quantity actually furnished at the unit price bid for the work.
 Reinforcement bars designated (E) shall be epoxy coated.

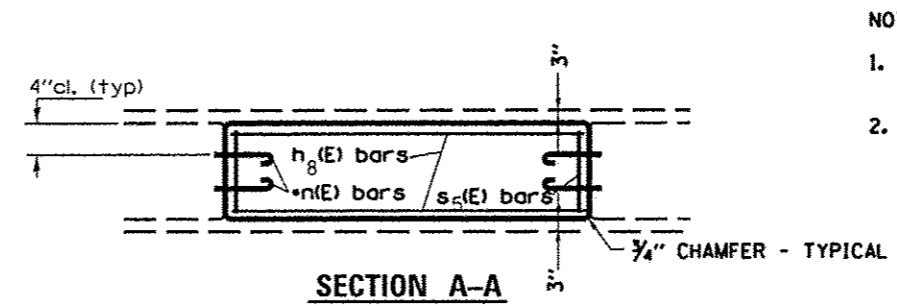


David Carl Puzey 5/12/14
 Expires 11/30/14

*Epoxy Grout n(E) bars in 9" min. holes according to Article 584 of Std. Spec. Cost included with Reinforcement Bars, Epoxy Coated



Bar	No.	Size	Length	Shape
h ₈ (E)	36	#5	10'-3"	—
n(E)	128	#5	2'-5"	U
s ₅ (E)	40	#5	10'-1"	□
Reinforcement Bars, Epoxy Coated		POUND	1130	
Concrete Structures		CU YD	11.0	



- NOTES:
- ALL HOLES MADE BY THE REMOVAL OF EXISTING GUARDRAIL SHALL BE PATCHED WITH AN APPROVED NON SHRINK GROUT.
 - ALL EXPOSED EDGES SHALL HAVE A 3/4" CHAMFER.