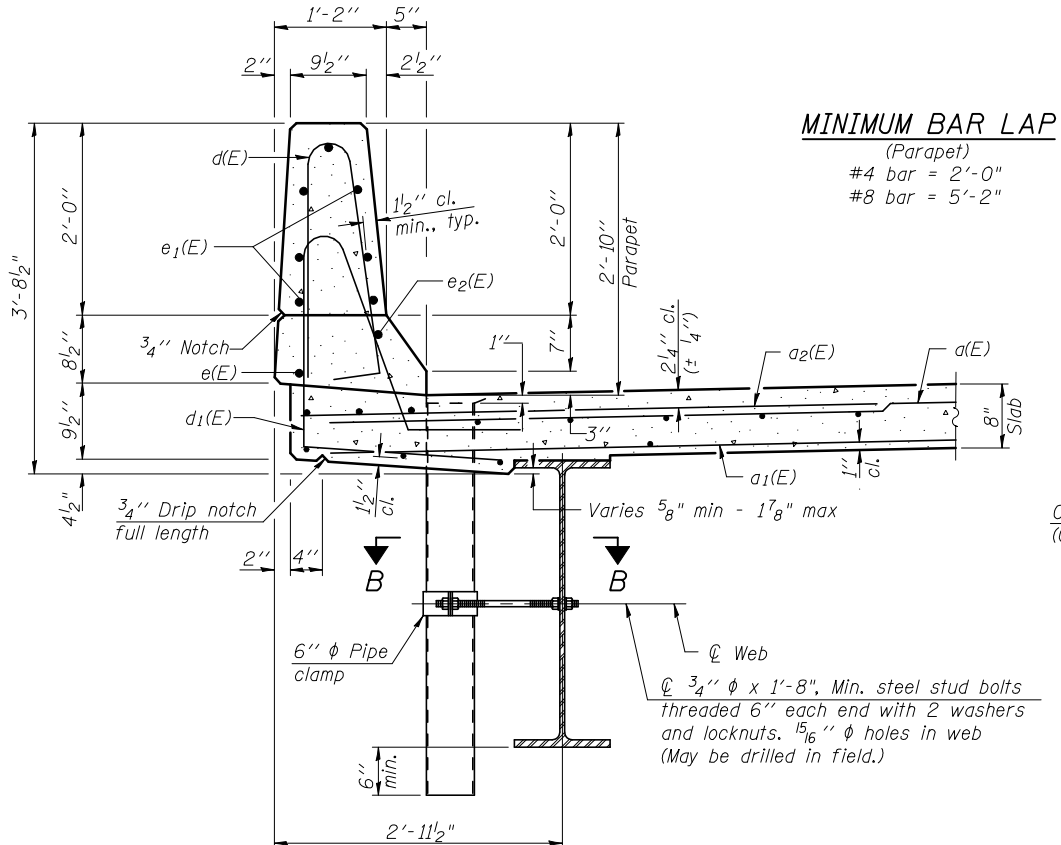
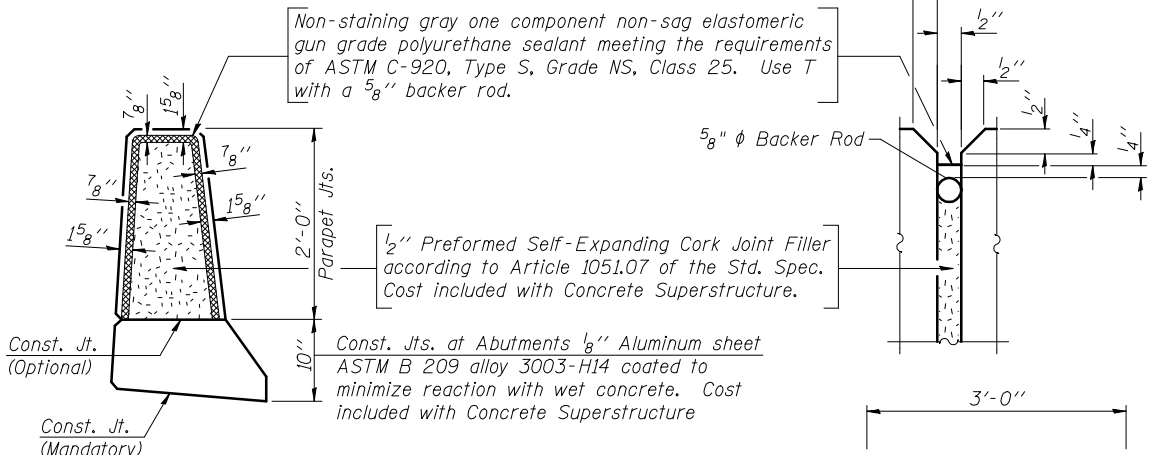


INSIDE ELEVATION OF PARAPET

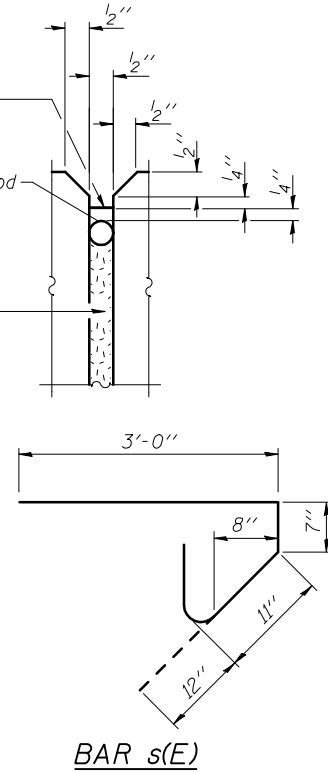


MINIMUM BAR LAP
(Parapet)
#4 bar = 2'-0"
#8 bar = 5'-2"



PARAPET JOINT DETAILS

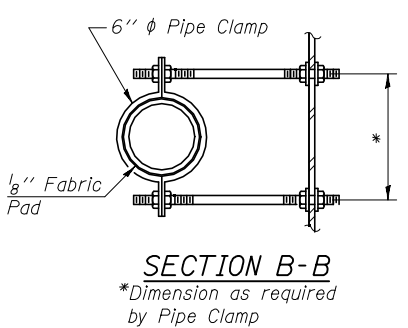
Notes:
Floor Drains need not to be painted.
Fiberglass pipe shall conform to ASTM D 2996, with short-time rupture strength hoop tensile stress of 30,000 p.s.i. minimum.
Galvanize clamping device according to AASHTO M232. Cost of clamping device and inserts is included with Floor Drains.



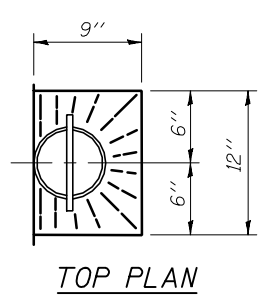
BAR s(E)

SUPERSTRUCTURE BILL OF MATERIAL

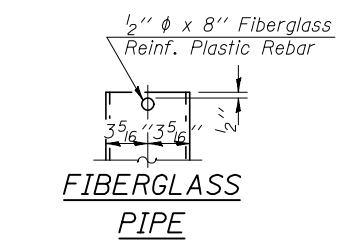
Bar	No.	Size	Length	Shape
a(E)	226	#5	43'-0"	—
a1(E)	148	#5	43'-0"	—
a2(E)	224	#6	6'-6"	—
b(E)	180	#5	31'-8"	—
b1(E)	252	#5	21'-11"	—
d(E)	134	#5	5'-7"	⌋
d1(E)	134	#5	7'-9"	⌋
e(E)	6	#4	21'-8"	—
e1(E)	56	#4	14'-11"	—
e2(E)	6	#8	23'-8"	—
m(E)	40	#6	23'-4"	—
m1(E)	56	#6	9'-0"	—
m2(E)	24	#6	6'-0"	—
m3(E)	4	#6	2'-8"	—
m4(E)	4	#6	2'-10"	—
s(E)	168	#5	5'-6"	⌋
s1(E)	168	#4	9'-2"	⌋
v(E)	176	#5	4'-0"	⌋
Reinforcement Bars, Epoxy Coated			Pound	38690
Concrete Superstructure			Cu. Yds.	13.6
Bridge Deck (Shrinkage Compensating Concrete)			Cu. Yds.	191.7



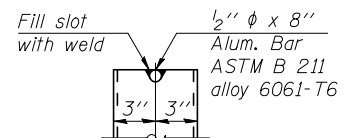
SECTION B-B
*Dimension as required by Pipe Clamp



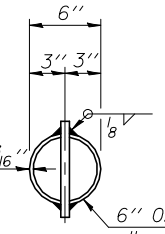
TOP PLAN



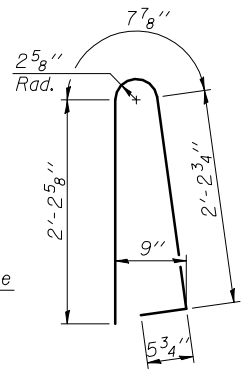
FIBERGLASS PIPE



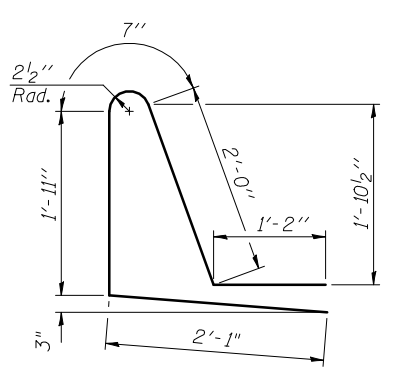
ALUMINUM TUBE



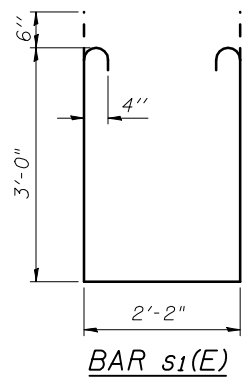
TOP PLAN (Showing Aluminum Tube)



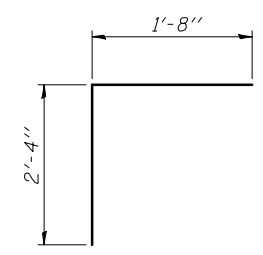
BAR d(E)



BAR d1(E)



BAR s1(E)



BAR v(E)

Bars indicated thus 1 x 3 - #8 etc. indicates 1 line of bars with 3 lengths per line.

FILE NAME =	USER NAME = .USER.	DESIGNED - AB	REVISED -
...\\0720226-68481-010-Super-Str-Dtls.dgn		CHECKED - MJS	REVISED -
		DRAWN - RMH	REVISED -
		CHECKED - LP	REVISED -

STATE OF ILLINOIS DEPARTMENT OF TRANSPORTATION

SUPERSTRUCTURE DETAILS STRUCTURE NO. 072-0226

F.A.U. RTE.	SECTION	COUNTY	TOTAL SHEETS	SHEET NO.
64	(10B) BR	PEORIA	77	38
			CONTRACT NO. 68481	
ILLINOIS FED. AID PROJECT				