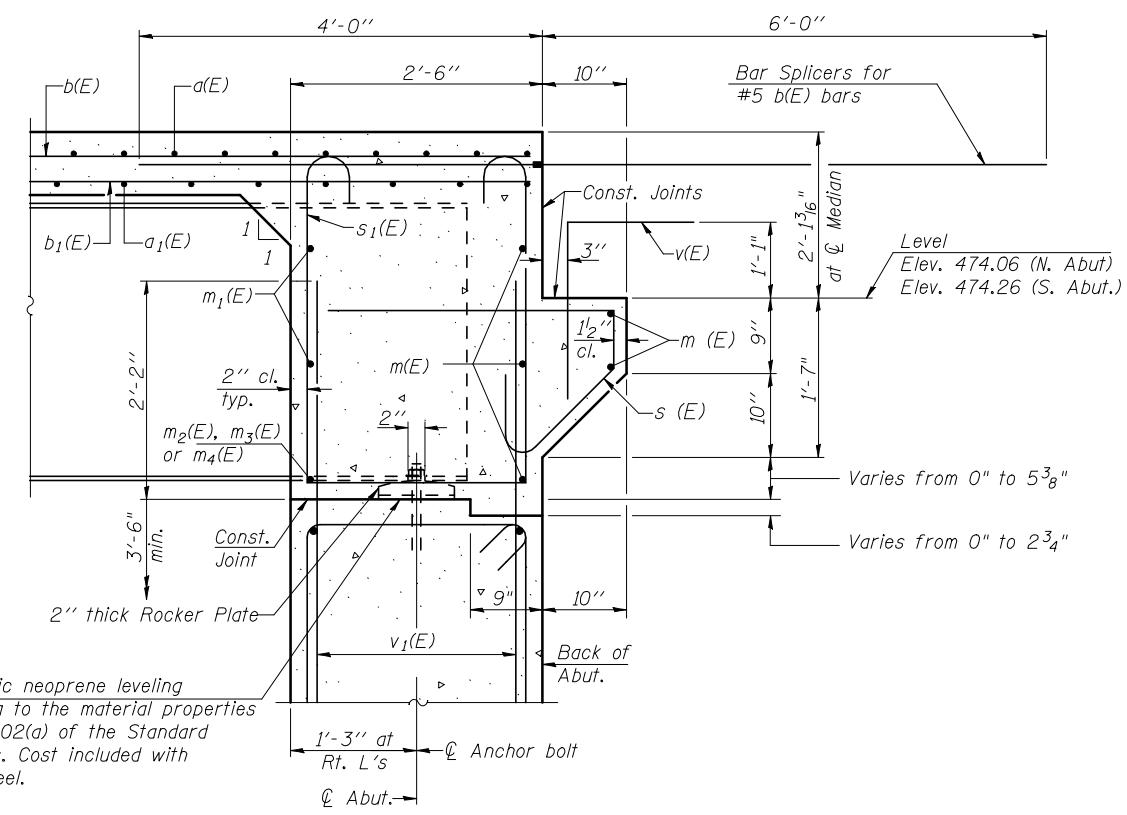


PARTIAL END DIAPHRAGM AT SOUTH ABUTMENT

(Looking South)
(North Abutment Similar)



SECTION A-A

MIN. BAR LAP
#6 bar = 3'-4"

- Notes:
- Reinforcement bars in diaphragm are billed with superstructure on sheet 10 of 27.
 - Concrete in diaphragm is included with Concrete Superstructure on sheet 10 of 27.
 - For details of bars s(E) & s1(E) see sheet 10 of 27.
 - The s(E) and s1(E) bars shall be placed parallel to the beams. Spacing for these bars shall be at right angles to the beams.
 - Pour Abutment Diaphragms monolithically with Slab.
 - For Bar Splicer Details see Sheet 18 of 27.

FILE NAME = ...\\0720226-68481-011-EndDiagrams.dgn	USER NAME = _USER_	DESIGNED - AB	REVISED -	STATE OF ILLINOIS DEPARTMENT OF TRANSPORTATION	INTEGRAL ABUTMENT DIAPHRAGM DETAILS STRUCTURE NO. 072-0226	F.A.U. RTE. 64	SECTION (10B) BR	COUNTY PEORIA	TOTAL SHEETS 77	SHEET NO. 39	
THE UPCHURCH GROUP, INC.	PLOT SCALE = #SCALE#	DRAWN - RMH	REVISED -			SHEET NO. 11 OF 27 SHEETS		CONTRACT NO. 68481		ILLINOIS FED. AID PROJECT	
	PLOT DATE = 12/17/2012 10:00:25 AM	CHECKED - LP	REVISED -								