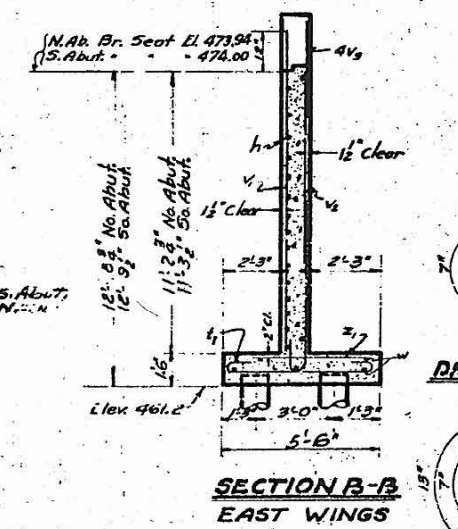
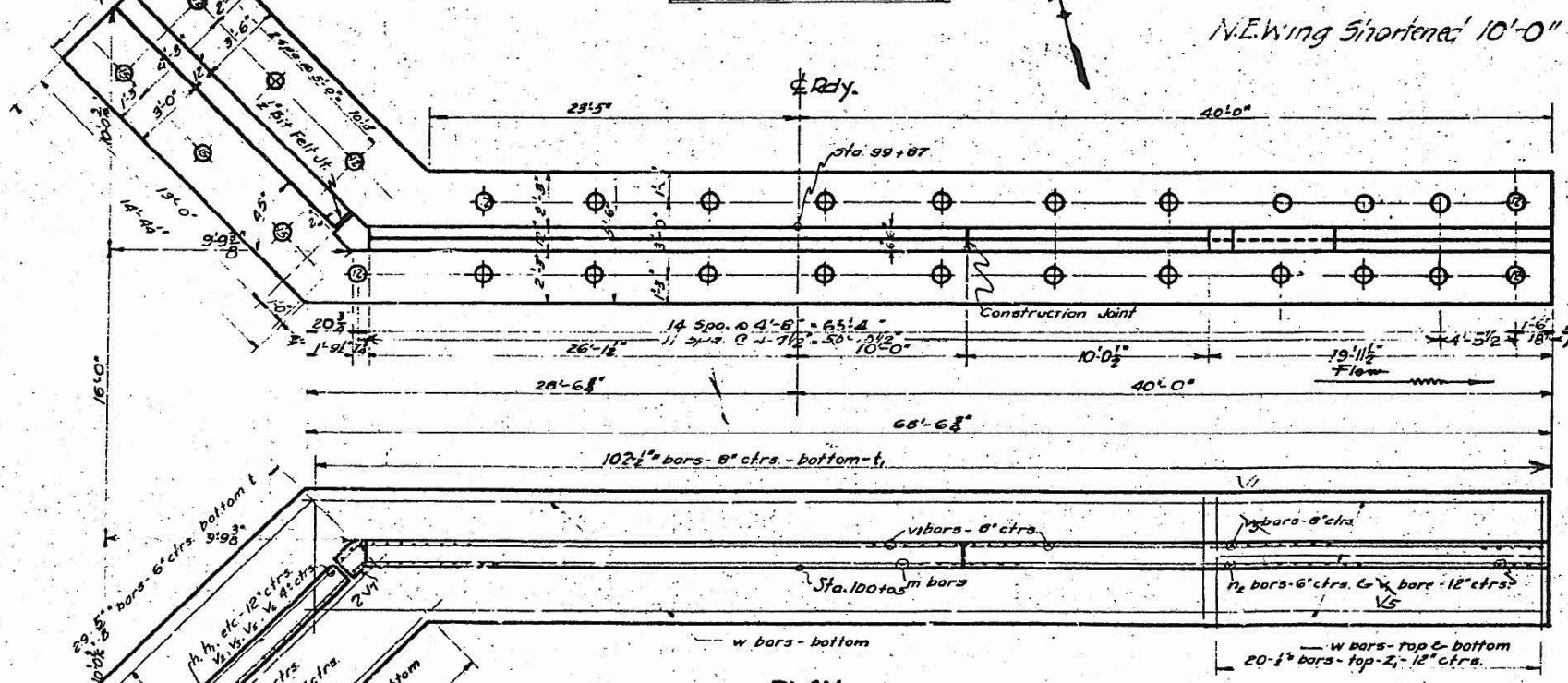
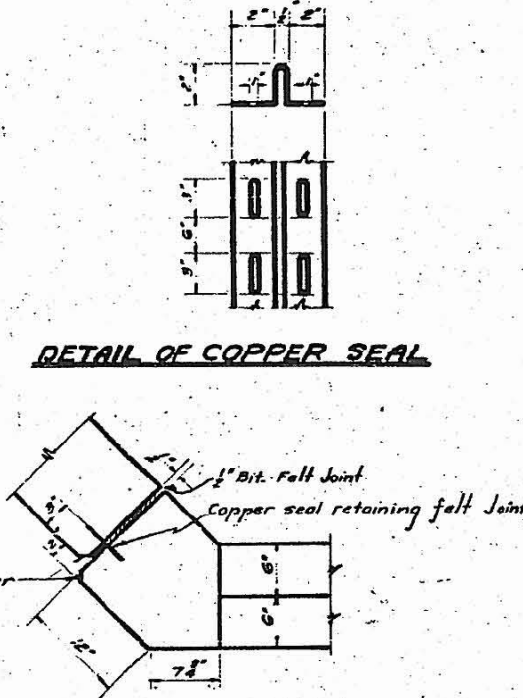
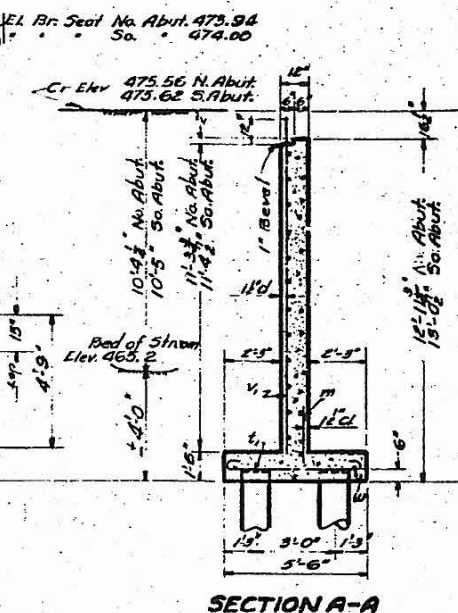
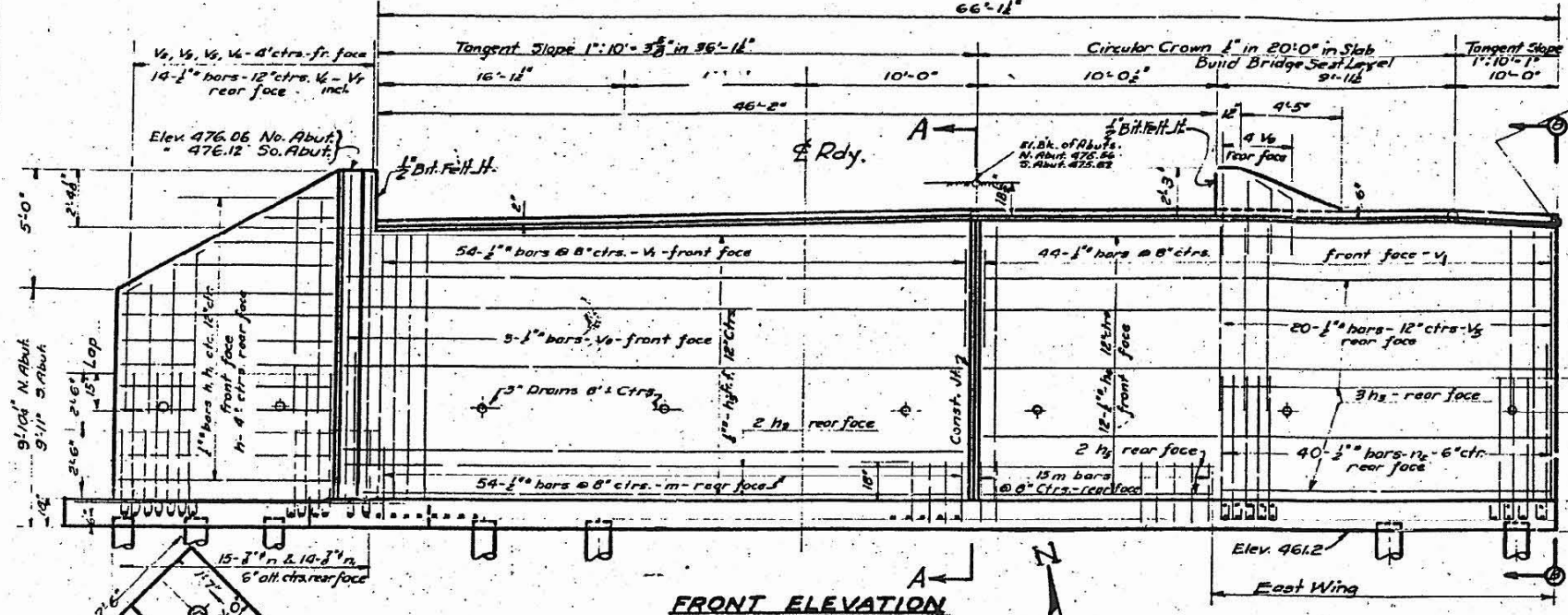


B.M. #9 Horizontal 36 W m S. End
R.R. Bridge L. Sta. 100+37 Elev. 471.15

STATE OF ILLINOIS
DEPARTMENT OF PUBLIC WORKS & BUILDINGS
DIVISION OF HIGHWAYS

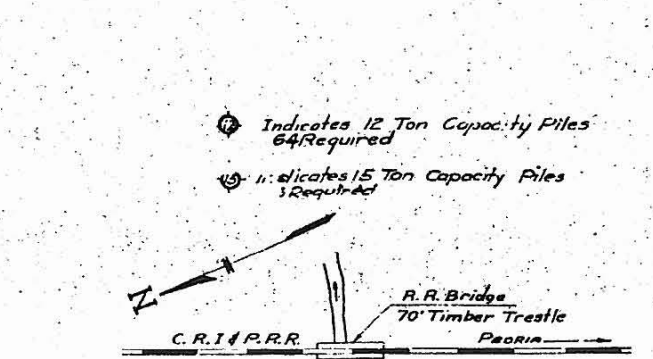
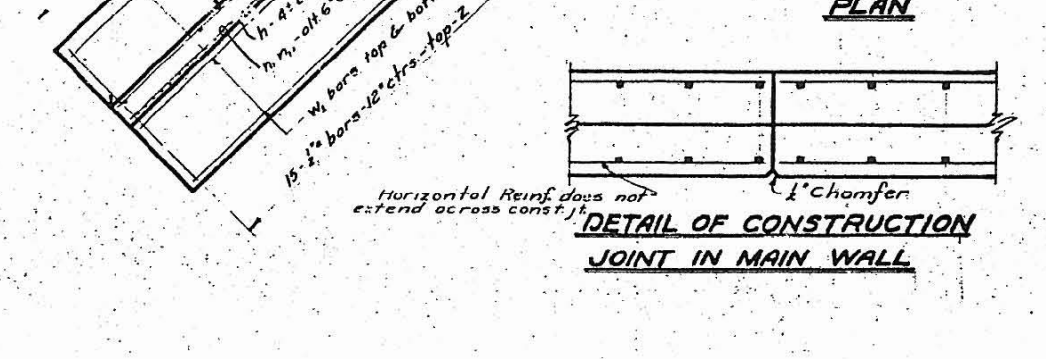
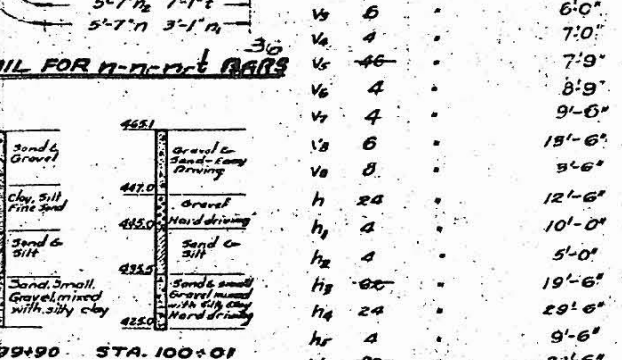
ROUTE NO.	SECTION	PROJECT	76	73	SHEET NO. 2
29	10B	Peoria			2 SHEETS
PER ROAD DIST. NO. 7					ILLINOIS
PER. NO. PROJECT					

Note: Copper seal shall be 16 oz. cold rolled annealed copper with outside legs perforated. Cost of copper seal to be included in unit price bid for class 'X' concrete.



SUBSTRUCTURE BILL OF MAT.

BAR	NO.	SIZE	LENGTH
t	58	5/8"	8'-0"
t ₁	208	1"	6'-6"
Z	30	1"	7'-8"
Z ₁	40	1"	5'-3"
n	30	1 1/4"	7'-3"
n ₁	28	1 1/4"	4'-9"
re	80	1"	6'-6"
m	158	1"	2'-6"
v ₁	196	1 1/4"	12'-6"
w ₁	12	1"	14'-0"
v ₂	6	1"	5'-0"
v ₃	6	1"	6'-0"
v ₄	4	1"	7'-0"
v ₅	46	1"	7'-9"
v ₆	4	1"	8'-9"
v ₇	4	1"	9'-6"
v ₈	6	1"	15'-6"
v ₉	8	1"	9'-6"
h	24	1"	12'-6"
h ₁	4	1"	10'-0"
h ₂	4	1"	5'-0"
h ₃	20	1"	19'-6"
h ₄	24	1"	29'-6"
h ₅	4	1"	9'-6"
w	20	1"	23'-6"



TEST BORINGS

Note: Logs of borings made at site are shown as a guide to bidders in estimating soil conditions which may be encountered in the work.

F.A.U. RTE.	SECTION	COUNTY	TOTAL SHEETS	SHEET NO.
64	(10B) BR	PEORIA	77	54
				CONTRACT NO. 68481
ILLINOIS FED. AID PROJECT				

Class 'X' Concrete - Cu. Yds. 119.2

Reinforcing Steel - Lb. 9560

Timber Piles (roll long) Lin. Ft. 1400

Test Piles 1