

STATE OF ILLINOIS
DEPARTMENT OF TRANSPORTATION
DIVISION OF HIGHWAYS

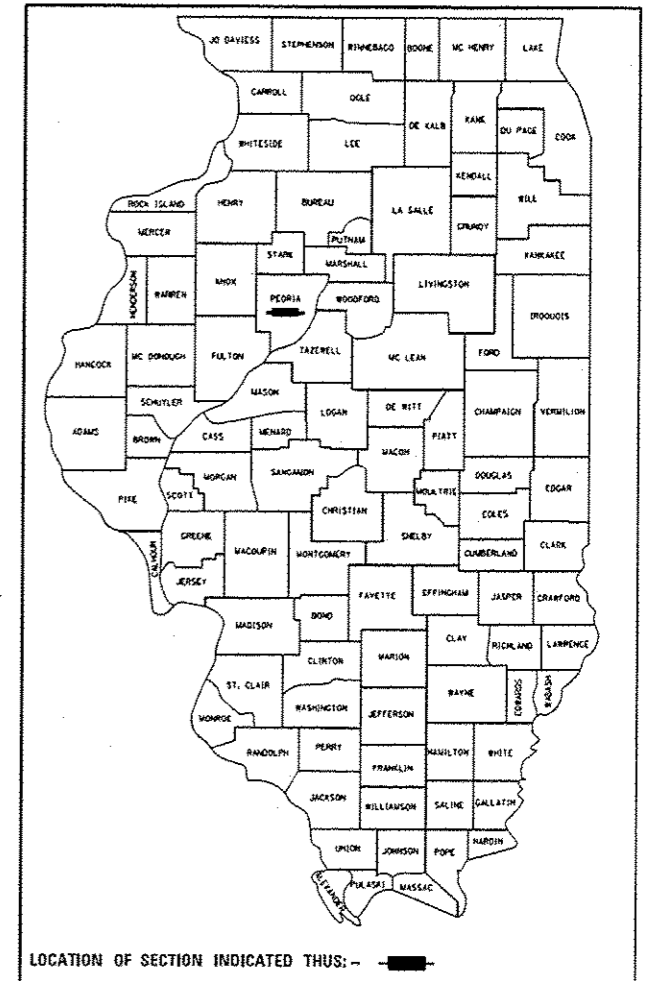
**PROPOSED
HIGHWAY PLANS**

FAS ROUTE 1388 (IL 8)
SECTION (Z-1D-BR-1)BR
PROJECT ACRS - 1388 (103)
PEORIA COUNTY
C-94-030-07

STRUCTURE REPLACEMENT OVER KICKAPOO CREEK

F.A.S. RTE.	SECTION	COUNTY	TOTAL SHEETS	SHEET NO.
1388	(Z-1D-BR-1)BR	PEORIA	89	1
FED. ROAD DIST. NO. 4	ILLINOIS	CONTRACT NO. 68697		

*89+1=90
D-94-026-07



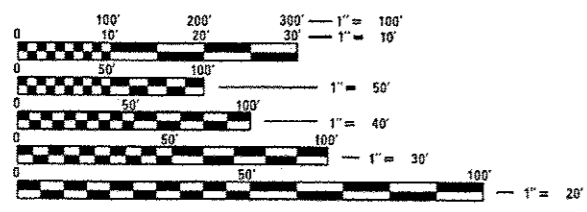
FOR INDEX OF SHEETS, SEE SHEET NO. 2
FOR SUMMARY OF QUANTITIES, SEE SHEET NO. 4

OMISSIONS:

TRAFFIC DATA:
MAJOR COLLECTOR (RURAL)
ADT(2011) = 2650
SU = 6.79%
MU = 2.26%

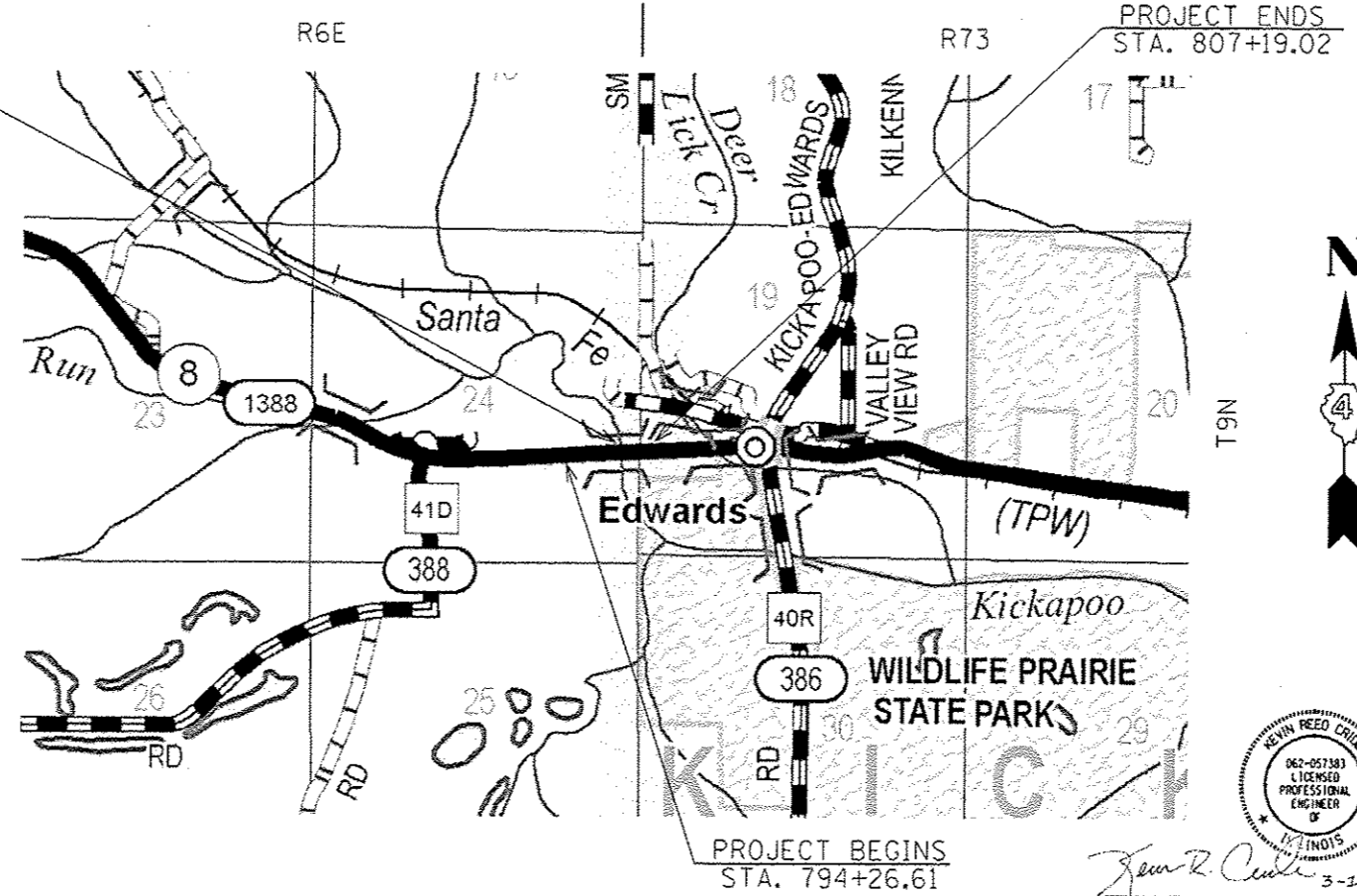
TOWNSHIPS: ROSEFIELD
KICKAPOO

PROPOSED BRIDGE ON IL 8
OVER KICKAPOO CREEK
STRUCTURE NUMBER 072-0229
STRUCTURE C. STA. 800+90.22
FIVE SPAN STEEL WIDE FLANGE
BEAM BRIDGE
359'-8" BK TO BK ABUTS: 0° SKEW
EXIST. STRUCTURE NUMBER 072-0047



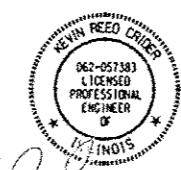
FULL SIZE PLANS HAVE BEEN PREPARED USING STANDARD
ENGINEERING SCALES. REDUCED SIZED PLANS WILL NOT
CONFORM TO STANDARD SCALES. IN MAKING MEASUREMENTS
ON REDUCED PLANS, THE ABOVE SCALES MAY BE USED.

J.U.L.I.E.
JOINT UTILITY LOCATION INFORMATION FOR EXCAVATION
1-800-892-0123
OR 811



FAS RTE 1388 (IL 8):
GROSS LENGTH OF PROJECT : 1292.41 FT. = 0.24 MILES
SN 072-0229
ROADWAY LENGTH = 932.74 FT
BRIDGE LENGTH = 359.67 FT
NET LENGTH OF PROJECT = 1292.41 FT. = 0.24 MILES

Kevin R. Crider
Professional Engineer
State of Illinois No. 062-057383
Expires 11/30/2015



BFW BACON | FARMER | WORKMAN
ENGINEERING & TESTING, INC.
1715 DUNDAS DRIVE MURRAY, KENTUCKY 40341 PHONE: 270.753.7307
150 SOUTH 19th STREET PLOMERY, ILLINOIS 62450 PHONE: 270.443.1795
493 NORTH COURT STREET HANCOCK, ILLINOIS 62450 PHONE: 414.972.3160
WWW.BFWENGINEERS.COM © COPYRIGHT 2014 BACON FARMER WORKMAN ENGINEERING & TESTING, INC.

STATE OF ILLINOIS
DEPARTMENT OF TRANSPORTATION
DIVISION OF HIGHWAYS

SUBMITTED March 21, 2014

Deputy Director of Highways, Region Engineer
May 9, 2014
J. D. Baranzelli, P.E.
Engineer of Design and Environment
May 9, 2014
Chris Osman, P.E.
Director of Highways, Chief Engineer

PROJECT ENGINEER RICH DOTSON (309) 671-3455
PROJECT MANAGER TERRISA WORSFOLD (309) 671-3465
CONTRACT NO. 68697
CATALOG NO. 033473-00D

**PRINTED BY THE AUTHORITY
OF THE STATE OF ILLINOIS**

APPROX. SCALE
1" = 1500'