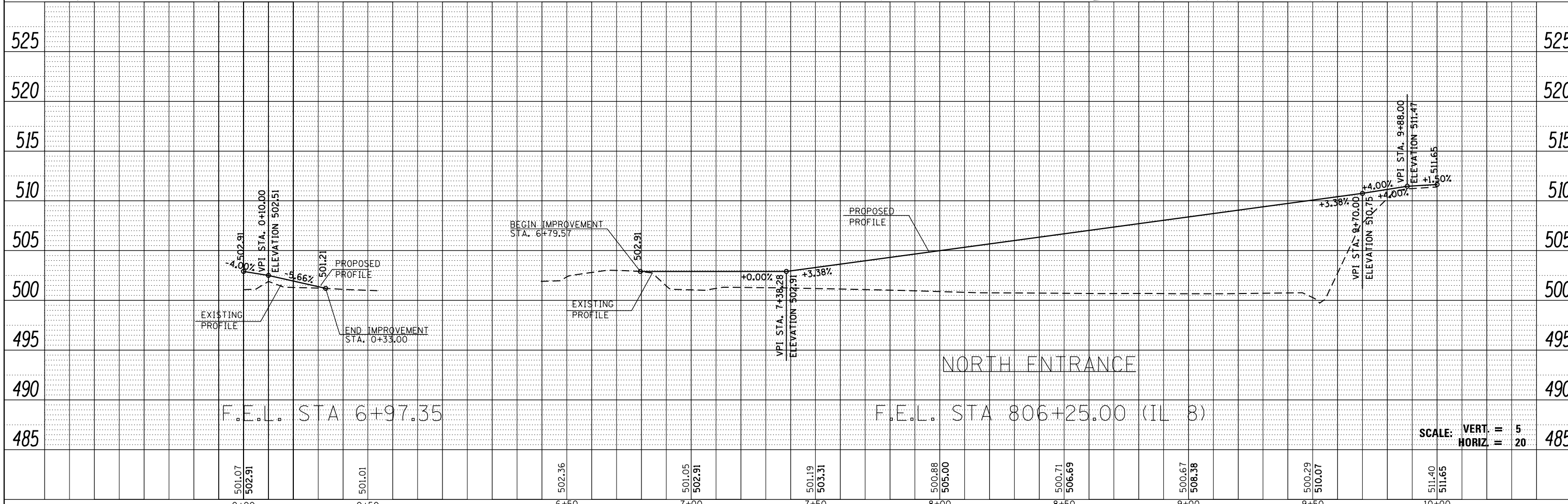
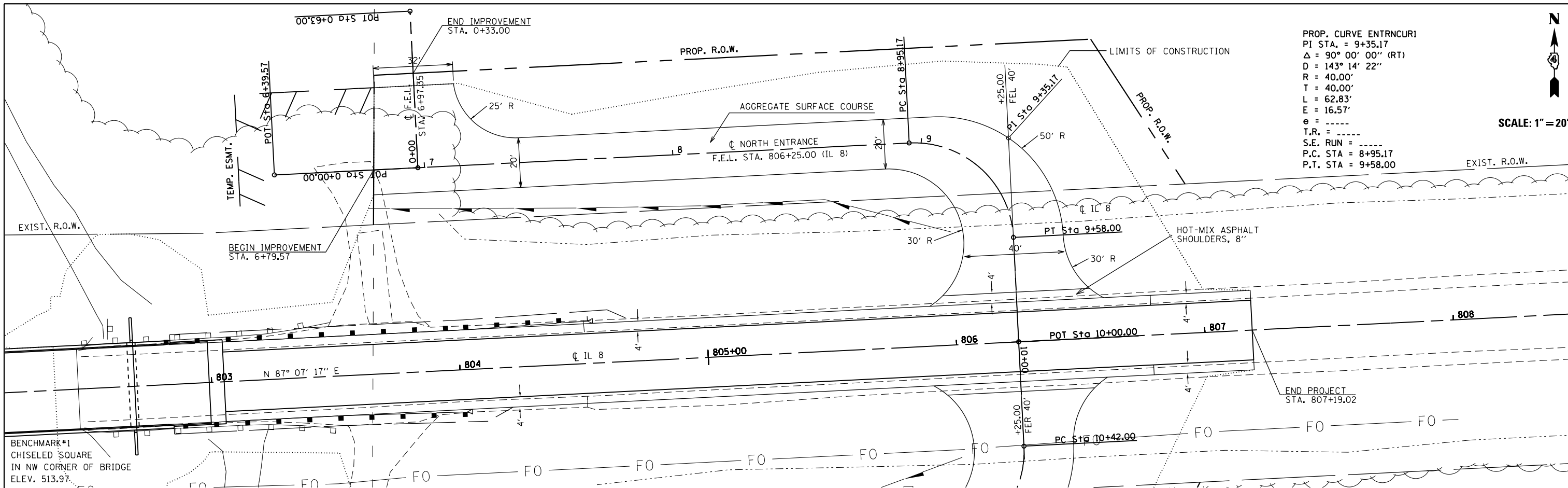


|      |                             |      |
|------|-----------------------------|------|
| PLAN | SURVEYED                    | DATE |
|      | PLOTTED                     | BY   |
|      | GRADES CHECKED              |      |
|      | STRUCTURE NOTATIONS CHECKED |      |
|      | NOTE BOOK NO.               |      |
|      | ALIGNMENT CHECKED           |      |
|      | PROPOSED FILE NAME          |      |

|         |                             |      |
|---------|-----------------------------|------|
| PROFILE | SURVEYED                    | DATE |
|         | PLOTTED                     | BY   |
|         | GRADES CHECKED              |      |
|         | STRUCTURE NOTATIONS CHECKED |      |
|         | NOTE BOOK NO.               |      |
|         | ALIGNMENT CHECKED           |      |
|         | PROPOSED FILE NAME          |      |



|   |                             |            |           |   |   |                           |               |        |              |           |
|---|-----------------------------|------------|-----------|---|---|---------------------------|---------------|--------|--------------|-----------|
| FILE NAME =   | USER NAME = bemery          | DESIGNED - | REVISED - | <b>STATE OF ILLINOIS</b><br><b>DEPARTMENT OF TRANSPORTATION</b> | <b>NORTH ENTRANCE PLAN AND PROFILE</b><br><b>IL 8 OVER KICKAPOO CREEK</b> | F.A. RTE.                 | SECTION       | COUNTY | TOTAL SHEETS | SHEET NO. |
| P:\Projects\2008 Projects\08379 IL 8 over Kickapoo Creek\CV\CADD Sheets\0468697-sht | DRAWN                       | REVISED -  | REVISED - |   |   | 1388                      | (Z-1D-BR-1)BR | PEORIA | 89           | 19        |
| Default   | PLOT SCALE = 40.0000' / in. | CHECKED -  | REVISED - |   |   | CONTRACT NO. 68697        |               |        |              |           |
|   | PLOT DATE = 3/20/2014       | DATE -     | REVISED - |   |   | ILLINOIS FED. AID PROJECT |               |        |              |           |