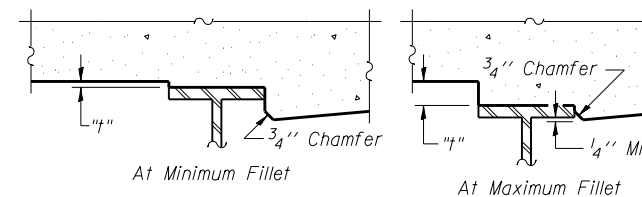


**DEAD LOAD DEFLECTION DIAGRAM**

(Includes weight of concrete only.)

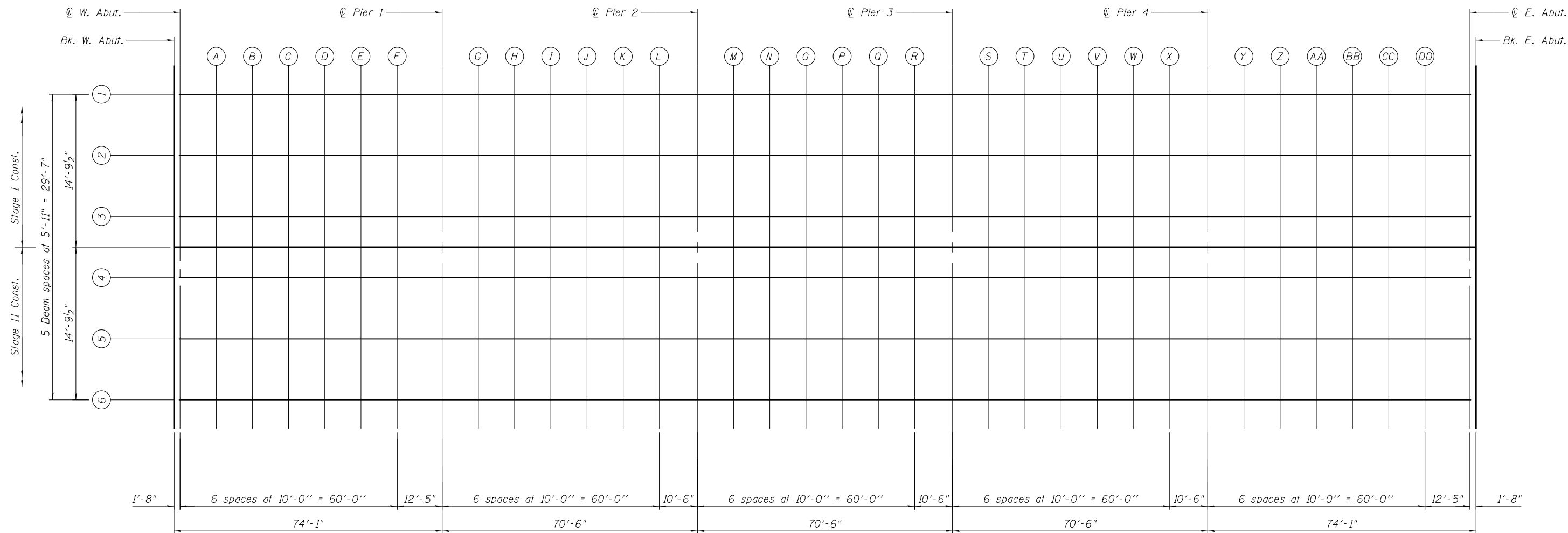
Note:

The above deflections are not to be used in the field if the engineer is working from the grade elevations adjusted for dead load deflections as shown below.



To determine "t": After all structural steel has been erected, elevations of the top flanges of the beams shall be taken at intervals shown below. These elevations subtracted from the "Theoretical Grade Elevations Adjusted for Dead Load Deflection" shown on sheets 6, 7, and 8 of 34, minus slab thickness, equals the fillet heights "t" above top flange of beams.

**FILLET HEIGHTS**



**PLAN**

FILE NAME = 0720229-68697-005-TOS Elevations.dgn BACON   FARMER   WORKMAN ENGINEERING & TESTING, INC. 433 NORTH COURT STREET MAHON, ILLINOIS 60451 PHONE: 815.977.9100	USER NAME =	DESIGNED - BWP	REVISED -	STATE OF ILLINOIS DEPARTMENT OF TRANSPORTATION	TOP OF SLAB ELEVATIONS STRUCTURE NO. 072-0229	F.A.S. RTE. = 1388	SECTION = (Z-1D-BR-1)BR	COUNTY = PEORIA	TOTAL SHEETS = 89	SHEET NO. = 47
	PLOT SCALE =	DRAWN - CMV	REVISED -			CONTRACT NO. 68697				
	PLOT DATE = 3/18/2014	CHECKED - BWP	REVISED -		SHEET NO. 5 OF 34 SHEETS	ILLINOIS FED. AID PROJECT				